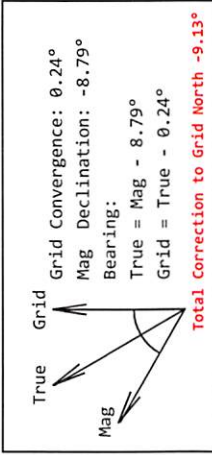




Edward Nichols OHI 5H Ohio County, WV Plan vs Actual



Plan Data for Edward Nichols OHI 5H
 Field: SOUTHWESTERN_OHIO_CO, WV UTM MAD 83 (17N)
 Vertical Reference Datum (VRD): Mean Sea Level
 Map Unit: USFt
 Projected Coordinate System: NAD83 / UTM zone 17N

Site: Edward Nichols Pad
 Unit: USFeet
 TVD Reference:
 Company Name: SOUTHWESTERN ENERGY
 Northing: 14563684.96USFt Latitude: 40.100885°
 Easting: 1743883.84USFt Longitude: -80.630283°
 North Reference: Grid Grid Convergence: 0.24°
 Elevation Above VRD: 1310.00USFt

Slot: Edward Nichols OHI 5H
 Position:
 Offset is from Site centre
 +N/-S: 42.23USFt Northing: 14563727.19USFt Latitude: 40.101001°
 +E/-W: 22.36USFt Easting: 1743826.19USFt Longitude: -80.630202°
 Elevation Above VRD: 1310.00USFt

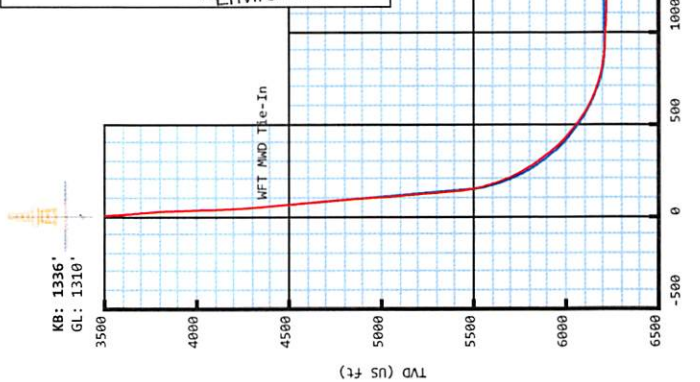
Well: Edward Nichols OHI 5H
 Type: Main-Well
 File Number:
 Plan Folder: P3
 Plan: P3:V2
 Vertical Section: Position offset of origin from Slot centre:
 +N/-S: 0.00USFt Azimuth: 345.62°
 +E/-W: 0.00USFt

Magnetic Parameters:
 Model: Field Strength: Declination: Dip: Date:
 bggm2017 52391(nt) -8.79° 2017-07-10

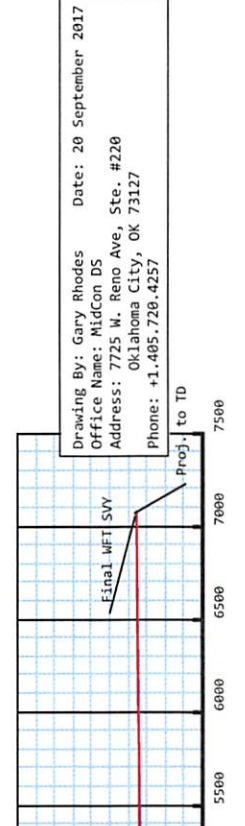
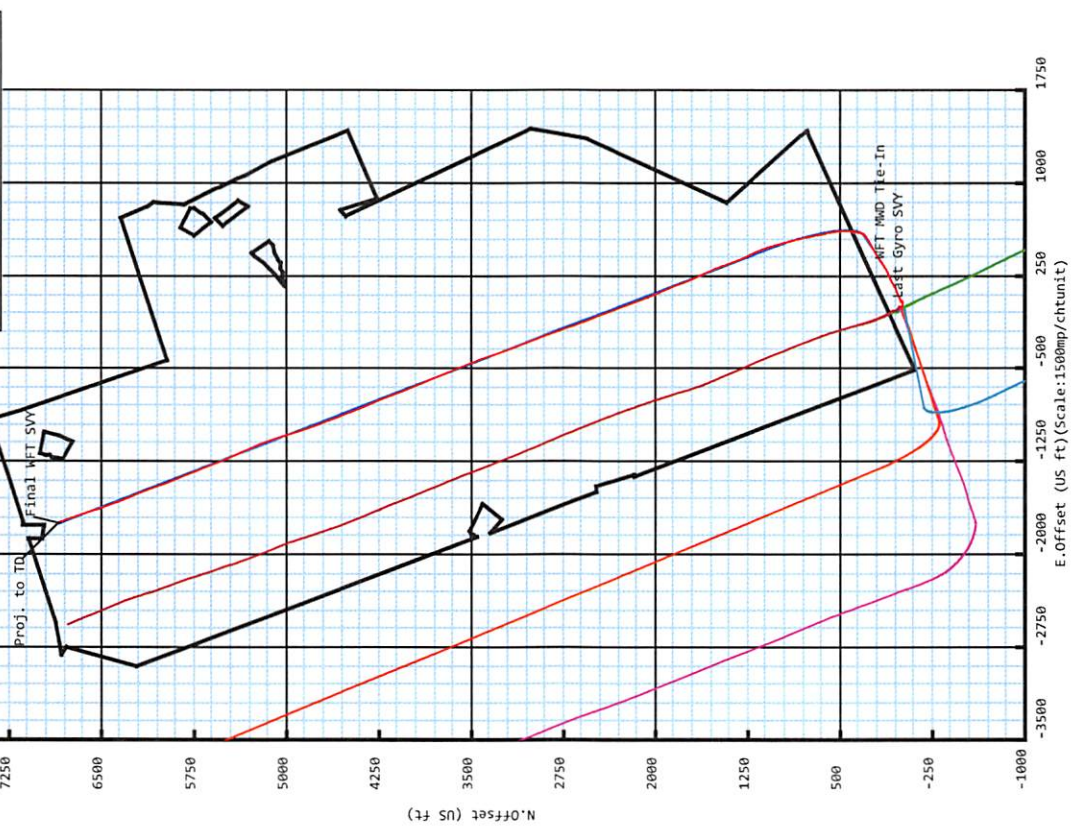
Plan Point Information:

Dogleg Severity Unit	MD Inc	Az	+N/-S (USFt)	+E/-W (USFt)	VSec (USFt)	DLS Toolface Comments	Position offsets from Slot centre	Lat (°)	Long (°)
4416.00	15.01	57.07	4378.36	142.03	328.15	56.06 1.41	217.6 WFT MWD Tie-In		
5543.83	15.01	57.07	5467.71	308.82	573.31	148.97 0.00	0.0 Curve KOP 7° DLS		
6495.26	78.00	343.00	6170.92	859.68	542.48	697.97 7.00	280.1 Build/Turn 9° DLS		
6728.29	90.59	338.94	6210.00	1875.52	467.77	925.60 9.00	348.6 Landing Point		
12926.38	90.59	338.94	6146.00	6859.38	-1759.16	7081.36 0.00	0.0 PBHL ENSH		

Target Set Information:
 Name: Edward Nichols OHI 5H
 Position offsets from Slot centre
 +N/-S (USFt) +E/-W (USFt) Northing (USFt) Easting (USFt) Lat (°) Long (°)
 6859.38 -1759.16 14570586.57 1742067.03 40.119857 -80.636393



- Edward Nichols OHI 5H
- Edward Nichols OHI 6H
- Edward Nichols OHI 1H
- Edward Nichols OHI 5H
- Edward Nichols 3H
- Edward Nichols 201H
- Edward Nichols 8H
- Edward Nichols 8H ST_01



Drawing By: Gary Rhodes Date: 20 September 2017
 Office Name: MidCon DS
 Address: 7725 W. Reno Ave, Ste. #220
 Oklahoma City, OK 73127
 Phone: +1.405.720.4257

Edward Nichols OHI 5H

Map Units: US ft	Company Name: SOUTHWESTERN ENERGY
Field Name:	Vertical Reference Datum (VRD): Mean Sea Level
SOUTHWESTER N_OHIO CO, WV UTM NAD 83 (17N)	Projected Coordinate System: NAD83 / UTM zone 17N
	Comment:

Site: Edward Nichols Pad	Units: US ft	North Reference: Grid	Convergence Angle: 0.24
	Position:	Northing: 14563684.97 US ft	Latitude: 40.100885
		Easting: 1743803.84 US ft	Longitude: -80.630283
		Elevation above MSL: 1310.00 US ft	
	Comment:		

Slot: Edward Nichols OHI 5H	Position (Relative to Site Centre)		
	+N/-S: 42.23 US ft	Northing: 14563727.19 US ft	Latitude: 40.101001
	+E/-W: 22.36 US ft	Easting: 1743826.19 US ft	Longitude: -80.630202
	Elevation above MSL: 1310.00 US ft		
	Comment:		

Well: Edward Nichols OHI 5H	Type: Main well	UWI:
	File Number:	Comment:
	Closure Distance: 7080.65 US ft	Closure Azimuth: 345.68°
	Vertical Section: Position of Origin (Relative to Slot centre)	
	+N/-S: -0.00 US ft	+E/-W: 0.00 US ft Az: 345.62°

Drill floor: Survey Name: Definitive Survey			
Rig Height (Drill Floor): 26.00 US ft	Elevation above MSL: 1336.00 US ft	Inclination: 0.00°	Azimuth: 0.00°

RECEIVED
Office of Oil and Gas

MAR 21 2018

WV Department of
Environmental Protection

Survey Name: Definitive Survey			
Date: 06/Jul/2017	Survey Tool: See Survey Tool Ranges below.	Comment:	Company:

Magnetic Model:				
Model Name: bggm2017	Date: 10/Jul/2017	Field Strength: 52391.4nT	Declination: -8.79°	Dip: 67.19°

Tie Point:						
MD: 0.00 US ft	Inclination: 0.00°	Azimuth: 0.00°	TVD: 0.00 US ft	North Offset: -0.00 US ft	East Offset: 0.00 US ft	

Survey Tool Ranges:			
Name	Start MD(USFt)	End MD(USFt)	Source Survey
MWD	0.00	13.00	
GYRO-NS_OW	13.00	923.00	Gyro_01
MWD	923.00	4416.00	WFT MWD_03
MWD	4416.00	12919.00	WFT MWD_04

Wellpath created using minimum curvature.

5D Survey Report

Survey Points: (Relative to Slot centre)(TVD relative to Drill Floor)										
MD (US ft)	Inc (°)	Az (°)	TVD (US ft)	VS (US ft)	N.Offset (US ft)	E.Offset (US ft)	Latitude (° ' ")	Longitude (° ' ")	DLS (°/100US ft)	Comment
0.00	0.00	0.00	0.00	0.00	-0.00	0.00	40.101001	-80.630202	0.00	
13.00	0.00	0.00	13.00	0.00	-0.00	0.00	40.101001	-80.630202	0.00	
113.00	0.13	277.52	113.00	0.04	0.01	-0.11	40.101001	-80.630203	0.13	
213.00	0.03	316.82	213.00	0.11	0.05	-0.24	40.101001	-80.630203	0.11	
313.00	0.25	294.83	313.00	0.27	0.16	-0.46	40.101001	-80.630204	0.22	
413.00	0.37	305.64	413.00	0.65	0.44	-0.92	40.101002	-80.630206	0.13	
513.00	0.36	282.06	513.00	1.04	0.69	-1.49	40.101003	-80.630208	0.15	
575.00	0.41	206.97	574.99	0.96	0.54	-1.78	40.101002	-80.630209	0.76	
659.00	0.66	195.24	658.99	0.32	-0.20	-2.04	40.101000	-80.630210	0.32	
747.00	1.39	142.42	746.98	-1.11	-1.53	-1.53	40.100996	-80.630208	1.27	
836.00	3.32	126.05	835.90	-4.09	-3.91	1.22	40.100990	-80.630198	2.27	
923.00	5.14	120.35	922.66	-8.77	-7.36	6.62	40.100980	-80.630179	2.14	Last Gyro SVY
1019.00	5.78	105.03	1018.23	-14.17	-10.78	15.00	40.100971	-80.630149	1.65	
1062.00	5.39	94.05	1061.03	-15.87	-11.49	19.10	40.100969	-80.630134	2.64	
1150.00	4.06	79.91	1148.73	-17.41	-11.23	26.29	40.100969	-80.630109	2.00	
1237.00	4.06	79.21	1235.51	-17.84	-10.12	32.35	40.100972	-80.630087	0.06	
1325.00	2.49	68.10	1323.36	-17.78	-8.82	37.19	40.100976	-80.630070	1.92	
1413.00	2.10	53.53	1411.29	-16.93	-7.15	40.26	40.100981	-80.630059	0.79	
1502.00	1.65	30.88	1500.25	-15.41	-5.08	42.22	40.100986	-80.630052	0.96	
1545.00	1.39	26.26	1543.23	-14.58	-4.08	42.77	40.100989	-80.630050	0.67	
1632.00	1.24	22.25	1630.21	-13.02	-2.27	43.60	40.100994	-80.630047	0.20	
1718.00	1.12	7.00	1716.19	-11.50	-0.57	44.05	40.100999	-80.630045	0.39	
1806.00	0.74	314.02	1804.18	-10.21	0.68	43.75	40.101002	-80.630046	1.02	
1895.00	0.68	279.12	1893.17	-9.51	1.16	42.81	40.101003	-80.630049	0.48	
1983.00	0.78	271.68	1981.17	-9.14	1.26	41.70	40.101004	-80.630053	0.16	
2027.00	0.80	266.49	2025.16	-9.00	1.25	41.09	40.101004	-80.630056	0.17	
2130.00	0.66	283.09	2128.15	-8.59	1.34	39.80	40.101004	-80.630060	0.24	
2218.00	0.83	279.29	2216.15	-8.10	1.56	38.67	40.101004	-80.630064	0.20	
2306.00	0.86	282.63	2304.14	-7.54	1.81	37.40	40.101005	-80.630069	0.07	
2394.00	0.92	275.42	2392.13	-7.00	2.02	36.05	40.101006	-80.630074	0.14	
2483.00	0.72	264.21	2481.12	-6.68	2.03	34.79	40.101006	-80.630078	0.29	
2570.00	0.41	216.71	2568.11	-6.79	1.72	34.06	40.101005	-80.630081	0.62	
2657.00	0.38	255.44	2655.11	-6.99	1.40	33.59	40.101004	-80.630082	0.30	
2745.00	1.31	88.19	2743.11	-7.21	1.36	34.31	40.101004	-80.630080	1.91	
2834.00	3.90	81.71	2832.01	-7.75	1.83	38.33	40.101005	-80.630065	2.92	
2920.00	4.91	78.75	2917.75	-8.26	2.97	44.83	40.101008	-80.630042	1.20	
3008.00	8.18	67.64	3005.17	-7.60	6.09	54.32	40.101017	-80.630008	3.97	
3096.00	9.01	63.49	3092.18	-5.28	11.54	66.27	40.101032	-80.629965	1.18	
3184.00	9.66	59.04	3179.02	-1.73	18.42	78.77	40.101050	-80.629921	1.10	
3271.00	11.12	65.99	3264.59	1.76	25.59	92.69	40.101070	-80.629871	2.21	
3359.00	12.64	70.96	3350.71	3.96	32.18	109.55	40.101088	-80.629810	2.08	
3446.00	14.39	71.53	3435.29	5.50	38.71	128.80	40.101105	-80.629741	2.02	RECEIVED Office of Oil and Gas
3535.00	14.29	65.76	3521.52	8.17	46.73	149.31	40.101127	-80.629668	1.61	
3623.00	14.92	57.09	3606.69	13.63	57.34	168.72	40.101156	-80.629598	2.58	MAR 21 2018
3711.00	13.44	53.29	3692.01	21.11	69.61	186.44	40.101190	-80.629535	1.99	
3798.00	11.96	58.99	3776.88	27.54	80.30	202.27	40.101219	-80.629478	2.23	WV Department of Environmental Protection
3886.00	11.06	64.18	3863.11	31.82	88.67	217.68	40.101242	-80.629423	1.56	
3973.00	10.58	65.30	3948.57	34.90	95.65	232.45	40.101261	-80.629370	0.60	
4062.00	12.02	68.48	4035.84	37.52	102.46	248.50	40.101279	-80.629312	1.76	
4149.00	13.64	68.13	4120.67	39.98	109.61	266.44	40.101299	-80.629248	1.86	
4237.00	15.15	64.64	4205.90	43.52	118.40	286.47	40.101322	-80.629176	1.98	
4325.00	16.01	60.10	4290.67	48.96	129.37	307.38	40.101352	-80.629101	1.69	
4416.00	15.01	57.07	4378.36	56.06	142.03	328.15	40.101387	-80.629027	1.41	WFT MWD Tie-In
4514.00	13.38	54.06	4473.36	64.27	155.59	347.98	40.101424	-80.628956	1.83	
4609.00	12.00	52.22	4566.04	72.23	168.09	364.69	40.101458	-80.628896	1.51	
4705.00	15.41	54.23	4659.29	80.84	181.66	382.93	40.101495	-80.628830	3.59	
4801.00	15.56	60.44	4751.82	88.86	195.47	404.48	40.101533	-80.628753	1.73	

5D Survey Report

Survey Points: (Relative to Slot centre)(TVD relative to Drill Floor)										
MD (US ft)	Inc (°)	Az (°)	TVD (US ft)	VS (US ft)	N. Offset (US ft)	E. Offset (US ft)	Latitude (° ' ")	Longitude (° ' ")	DLS (°/100US ft)	Comment
4897.00	15.65	62.23	4844.28	95.23	207.86	427.14	40.101567	-80.628672	0.51	
4994.00	15.89	60.75	4937.63	101.67	220.44	450.30	40.101601	-80.628589	0.48	
5089.00	15.79	59.53	5029.02	108.59	233.35	472.79	40.101636	-80.628508	0.37	
5186.00	15.80	60.74	5122.36	115.63	246.50	495.68	40.101672	-80.628426	0.34	
5282.00	15.72	58.79	5214.75	122.75	259.63	518.21	40.101708	-80.628346	0.56	
5378.00	15.59	57.19	5307.19	130.59	273.35	540.17	40.101745	-80.628267	0.47	
5475.00	15.84	56.68	5400.56	139.01	287.69	562.19	40.101784	-80.628188	0.29	
5571.00	16.53	42.60	5492.79	150.71	304.95	582.39	40.101831	-80.628115	4.14	
5619.00	18.07	26.31	5538.65	160.08	316.65	590.32	40.101863	-80.628087	10.55	
5667.00	20.13	19.11	5584.01	172.61	331.13	596.32	40.101903	-80.628065	6.51	
5715.00	21.70	13.90	5628.85	187.32	347.56	601.16	40.101948	-80.628048	5.07	
5763.00	24.15	11.11	5673.06	204.00	365.81	605.18	40.101998	-80.628033	5.58	
5811.00	27.55	8.08	5716.25	223.13	386.44	608.64	40.102055	-80.628020	7.60	
5858.00	30.45	5.04	5757.35	244.41	409.07	611.21	40.102117	-80.628011	6.92	
5906.00	32.85	2.33	5798.21	268.35	434.20	612.81	40.102186	-80.628005	5.81	
5954.00	34.81	359.61	5838.09	294.12	460.91	613.25	40.102259	-80.628003	5.16	
6002.00	36.84	356.13	5877.01	321.57	488.98	612.18	40.102336	-80.628006	5.99	
6050.00	38.93	353.64	5914.89	350.65	518.33	609.54	40.102417	-80.628015	5.39	
6098.00	42.20	351.31	5951.35	381.64	549.26	605.43	40.102502	-80.628029	7.51	
6146.00	46.31	349.19	5985.73	415.02	582.26	599.74	40.102593	-80.628049	9.10	
6194.00	49.62	347.68	6017.86	450.62	617.18	592.58	40.102689	-80.628074	7.28	
6242.00	51.64	347.88	6048.31	487.70	653.44	584.73	40.102788	-80.628102	4.22	
6290.00	54.25	348.90	6077.23	525.96	690.96	577.02	40.102891	-80.628129	5.70	
6338.00	58.11	349.23	6103.94	565.75	730.11	569.46	40.102999	-80.628155	8.06	
6386.00	62.60	348.22	6127.68	607.40	771.01	561.30	40.103111	-80.628184	9.53	
6434.00	66.32	347.06	6148.37	650.67	813.30	552.03	40.103228	-80.628216	8.05	
6483.00	70.98	345.44	6166.21	696.29	857.62	541.17	40.103350	-80.628254	10.00	
6531.00	74.06	345.25	6180.62	742.07	901.90	529.59	40.103471	-80.628295	6.43	
6579.00	76.76	344.73	6192.71	788.52	946.77	517.56	40.103595	-80.628338	5.72	
6627.00	80.03	344.44	6202.37	835.52	992.09	505.06	40.103719	-80.628382	6.84	
6675.00	84.56	344.14	6208.80	883.06	1037.87	492.18	40.103845	-80.628427	9.46	
6723.00	87.72	342.59	6212.03	930.91	1083.74	478.48	40.103971	-80.628475	7.33	
6771.00	87.35	339.34	6214.10	978.70	1129.07	462.84	40.104096	-80.628531	6.81	
6819.00	87.10	336.32	6216.42	1026.20	1173.47	444.75	40.104218	-80.628595	6.31	
6867.00	86.92	335.11	6218.92	1073.42	1217.16	425.03	40.104338	-80.628664	2.55	
6915.00	89.20	335.03	6220.55	1120.57	1260.66	404.81	40.104458	-80.628736	4.75	
7012.00	91.42	338.82	6220.02	1216.44	1349.87	366.81	40.104703	-80.628871	4.53	
7107.00	90.99	341.42	6218.03	1310.97	1439.18	334.51	40.104949	-80.628985	2.77	
7204.00	91.05	336.57	6216.30	1407.28	1529.70	299.76	40.105198	-80.629108	5.00	
7300.00	91.48	335.44	6214.18	1501.91	1617.38	260.73	40.105439	-80.629246	1.26	
7397.00	91.30	336.52	6211.83	1597.51	1705.95	221.26	40.105683	-80.629386	1.13	
7492.00	91.54	340.05	6209.47	1691.69	1794.17	186.12	40.105925	-80.629510	3.72	
7589.00	91.29	336.48	6207.08	1787.85	1884.23	150.22	40.106173	-80.629637	3.69	
7685.00	90.74	335.42	6205.37	1882.47	1971.88	111.10	40.106414	-80.629776	1.24	
7781.00	91.05	338.53	6203.87	1977.35	2060.21	73.56	40.106657	-80.629909	3.26	
7877.00	91.42	339.44	6201.81	2072.69	2149.80	39.15	40.106904	-80.630031	1.02	
7973.00	90.86	340.16	6199.90	2168.17	2239.88	6.00	40.107151	-80.630148	0.95	
8069.00	90.74	339.46	6198.56	2263.67	2329.97	-27.13	40.107399	-80.630265	0.74	
8166.00	90.74	339.22	6197.30	2360.08	2420.73	-61.35	40.107649	-80.630386	0.25	
8262.00	90.18	336.85	6196.53	2455.23	2509.75	-97.25	40.107894	-80.630513	2.54	
8358.00	90.74	339.00	6195.76	2550.36	2598.70	-133.33	40.108138	-80.630641	2.31	
8454.00	90.74	340.15	6194.52	2645.82	2688.66	-166.82	40.108386	-80.630759	1.20	
8550.00	90.56	341.15	6193.43	2741.45	2779.23	-198.63	40.108635	-80.630872	1.06	
8646.00	90.68	341.31	6192.39	2837.16	2870.12	-229.52	40.108885	-80.630981	0.21	
8742.00	90.56	338.82	6191.35	2932.70	2960.35	-262.25	40.109133	-80.631096	2.60	
8839.00	90.74	339.18	6190.25	3029.05	3050.90	-297.00	40.109382	-80.631219	0.41	
8935.00	90.74	339.84	6189.01	3124.49	3140.82	-330.61	40.109629	-80.631338	0.69	
9031.00	90.74	341.15	6187.77	3220.10	3231.30	-362.66	40.109878	-80.631451	1.36	
9127.00	90.62	340.25	6186.63	3315.74	3321.90	-394.38	40.110127	-80.631564	0.95	

RECEIVED
Office of Oil and Gas

MAR 21 2018

WV Department of
Environmental Protection

5D Survey Report

Survey Points: (Relative to Slot centre)(TVD relative to Drill Floor)										
MD (US ft)	Inc (°)	Az (°)	TVD (US ft)	VS (US ft)	N.Offset (US ft)	E.Offset (US ft)	Latitude (° ' ")	Longitude (° ' ")	DLS (°/100US ft)	Comment
9224.00	90.68	340.48	6185.53	3412.33	3413.26	-426.98	40.110379	-80.631679	0.25	
9319.00	90.56	337.97	6184.51	3506.72	3502.07	-460.67	40.110623	-80.631798	2.64	
9416.00	90.86	337.39	6183.30	3602.79	3591.79	-497.50	40.110870	-80.631928	0.67	
9512.00	90.80	338.70	6181.91	3697.94	3680.82	-533.39	40.111115	-80.632055	1.37	
9608.00	91.11	338.53	6180.31	3793.21	3770.20	-568.39	40.111360	-80.632179	0.37	
9705.00	90.86	336.05	6178.65	3889.16	3859.66	-605.83	40.111606	-80.632312	2.57	
9801.00	91.05	337.93	6177.05	3984.06	3948.00	-643.35	40.111849	-80.632445	1.97	
9898.00	90.86	337.86	6175.43	4080.17	4037.86	-679.85	40.112097	-80.632574	0.21	
9994.00	90.99	340.03	6173.88	4175.50	4127.43	-714.33	40.112343	-80.632696	2.26	
10090.00	91.11	337.14	6172.12	4270.75	4216.78	-749.37	40.112589	-80.632820	3.01	
10185.00	90.86	337.23	6170.49	4364.71	4304.33	-786.20	40.112830	-80.632950	0.28	
10281.00	90.99	337.55	6168.94	4459.71	4392.94	-823.10	40.113073	-80.633081	0.36	
10377.00	90.74	338.58	6167.49	4554.87	4481.98	-858.96	40.113318	-80.633208	1.10	
10474.00	90.68	340.08	6166.28	4651.27	4572.73	-893.20	40.113568	-80.633329	1.55	
10570.00	90.99	339.01	6164.89	4746.72	4662.67	-926.74	40.113815	-80.633448	1.16	
10667.00	90.56	339.78	6163.57	4843.14	4753.45	-960.88	40.114065	-80.633569	0.91	
10763.00	90.43	341.71	6162.74	4938.79	4844.07	-992.53	40.114314	-80.633680	2.01	
10859.00	90.68	343.13	6161.81	5034.63	4935.58	-1021.52	40.114566	-80.633783	1.50	
10956.00	90.25	342.38	6161.03	5131.51	5028.22	-1050.28	40.114820	-80.633884	0.89	
11052.00	90.49	340.67	6160.41	5227.26	5119.27	-1080.70	40.115071	-80.633992	1.80	
11149.00	90.43	338.80	6159.63	5323.74	5210.25	-1114.29	40.115321	-80.634111	1.93	
11245.00	89.94	335.11	6159.32	5418.63	5298.58	-1151.87	40.115564	-80.634244	3.88	
11341.00	90.06	336.55	6159.32	5513.23	5386.16	-1191.17	40.115805	-80.634383	1.51	
11436.00	90.49	336.01	6158.86	5606.97	5473.13	-1229.39	40.116044	-80.634518	0.73	
11533.00	90.12	338.37	6158.35	5702.91	5562.54	-1266.99	40.116290	-80.634651	2.46	
11629.00	90.62	339.93	6157.73	5798.30	5652.25	-1301.16	40.116537	-80.634772	1.71	
11726.00	90.86	338.33	6156.47	5894.66	5742.87	-1335.71	40.116786	-80.634895	1.67	
11822.00	90.62	337.82	6155.23	5989.82	5831.92	-1371.55	40.117031	-80.635022	0.59	
11918.00	90.62	337.01	6154.19	6084.84	5920.55	-1408.42	40.117275	-80.635152	0.84	
12015.00	90.55	340.32	6153.20	6181.11	6010.89	-1443.70	40.117523	-80.635277	3.41	
12111.00	90.56	340.81	6152.27	6276.73	6101.41	-1475.64	40.117772	-80.635390	0.51	
12208.00	90.49	338.42	6151.38	6373.19	6192.33	-1509.43	40.118022	-80.635509	2.46	
12304.00	90.43	337.77	6150.61	6468.36	6281.39	-1545.24	40.118267	-80.635636	0.68	
12400.00	90.49	339.57	6149.84	6563.64	6370.81	-1580.15	40.118513	-80.635760	1.88	
12496.00	90.56	339.70	6148.96	6659.12	6460.81	-1613.56	40.118761	-80.635878	0.15	
12592.00	90.49	342.57	6148.08	6754.81	6551.64	-1644.60	40.119011	-80.635988	2.99	
12689.00	90.43	340.97	6147.31	6851.59	6643.76	-1674.94	40.119264	-80.636095	1.65	
12785.00	90.62	341.40	6146.43	6947.29	6734.63	-1705.90	40.119514	-80.636204	0.49	
12881.00	90.49	339.43	6145.50	7042.89	6825.07	-1738.08	40.119763	-80.636318	2.06	
12896.00	90.49	339.12	6145.37	7057.80	6839.09	-1743.38	40.119801	-80.636337	2.07	
12919.00	90.49	339.12	6145.17	7080.65	6860.58	-1751.58	40.119860	-80.636366	2.07	

Final WFT
 RECEIVED BY
 09:00 of Oil and Gas
 Proj. to TD
 MAR 21 2018
 WV Department of
 Environmental Protection