

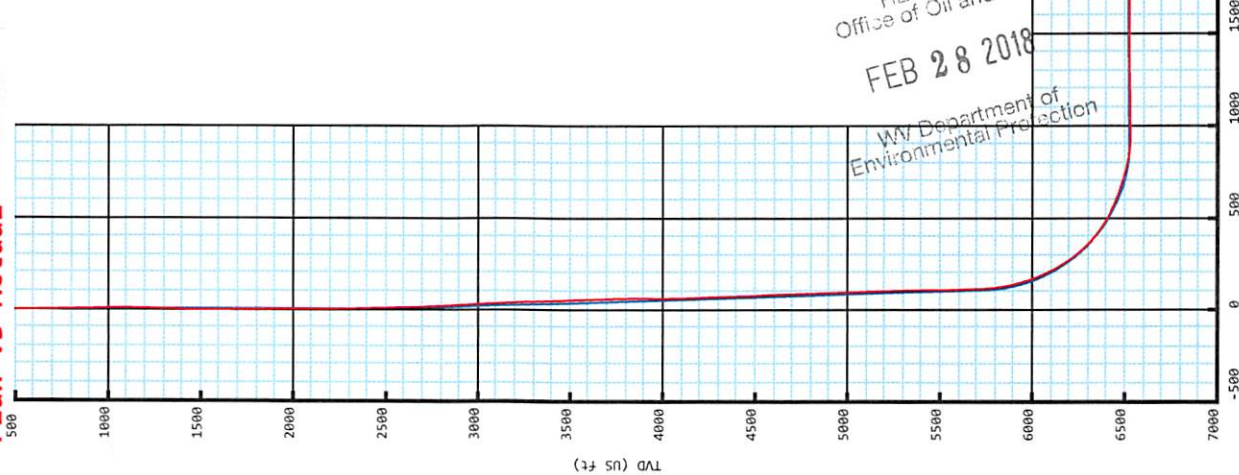


Southwestern Energy®
William Rodgers OHI 5H
Ohio County, WV

SDC 40

Plan vs Actual

KB: 1306'
GL: 1280'



Plan Data for William Rodgers OHI 5H

Dogleg Severity Unit: °/100.00ft		Plan Point Information:		Position offsets from Slot centre		DLS Toolface Comments	
MD (USft)	Inc (°)	AZ (°)	TVD (USft)	+N/-S (USft)	+E/-W (USft)	VSec (DLSU)	(°)
0.00	0.00	0.00	0.00	0.00	0.00	0.00	0.0
26.00	0.00	0.00	26.00	0.00	0.00	0.00	0.0 KB Offset
550.00	0.00	0.00	550.00	0.00	0.00	0.00	0.0 Nudge #1
700.00	3.00	268.00	699.93	-0.14	-3.92	0.97	268.0 Hold
900.00	3.00	268.00	899.66	-0.50	-14.38	3.55	0.0 Drop
1200.00	0.00	0.00	1199.52	-0.78	-22.23	5.48	180.0 Hold
2200.48	0.00	0.00	2200.00	-0.78	-22.23	5.48	0.0 Nudge #2
2950.48	15.00	66.73	2941.46	37.79	67.44	17.39	66.7 Hold
5859.59	15.00	66.73	5751.44	335.29	759.11	109.19	0.0 Curve KOP 7° DLS
6842.10	70.00	344.20	6484.15	899.11	748.99	653.26	271.8 Build/Turn 9° DLS
7081.89	90.31	336.74	6525.00	1120.29	670.04	887.70	339.3 Landing Point
14948.48	90.31	336.74	6483.00	8347.50	-2436.22	8695.74	0.0 PBHL WRSH

Target Set Information:

Name: William Rodgers 5H

Position offsets from Slot centre		Lat		Long	
Name	TVD (USft)	+N/-S (USft)	+E/-W (USft)	(°)	(°)
LP WRSH	6525.00	948.29	743.97	14566978.66	1771968.57
PBHL WRSH	6483.00	8347.50	-2436.22	14574377.87	1768788.38

Plan Data for William Rodgers OHI 5H

Field: SOUTHWESTERN_OHIO CO, WV UTM NAD 83 (17N)
Vertical Reference Datum (VRD): Mean Sea Level
Projected Coordinate System: NAD83 / UTM zone 17N

Site: William Rodgers Pad

Unit: USFeet
Company Name: SOUTHWESTERN ENERGY
Position: Northing: 14566030.37USft Latitude: 40.106071°
Easting: 1771224.60USft Longitude: -80.532184°
North Reference: Grid
Grid Convergence: 0.30°
Elevation Above VPD: 1280.00USft

Slot: William Rodgers OHI 5H

Position: Offsets is from Site centre
+N/-S: 0.00USft Northing: 14566030.37USft Latitude: 40.106071°
+E/-W: 0.00USft Easting: 1771224.60USft Longitude: -80.532184°
Elevation Above VRD: 1280.00USft

Well: William Rodgers OHI 5H

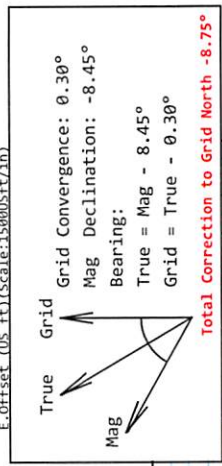
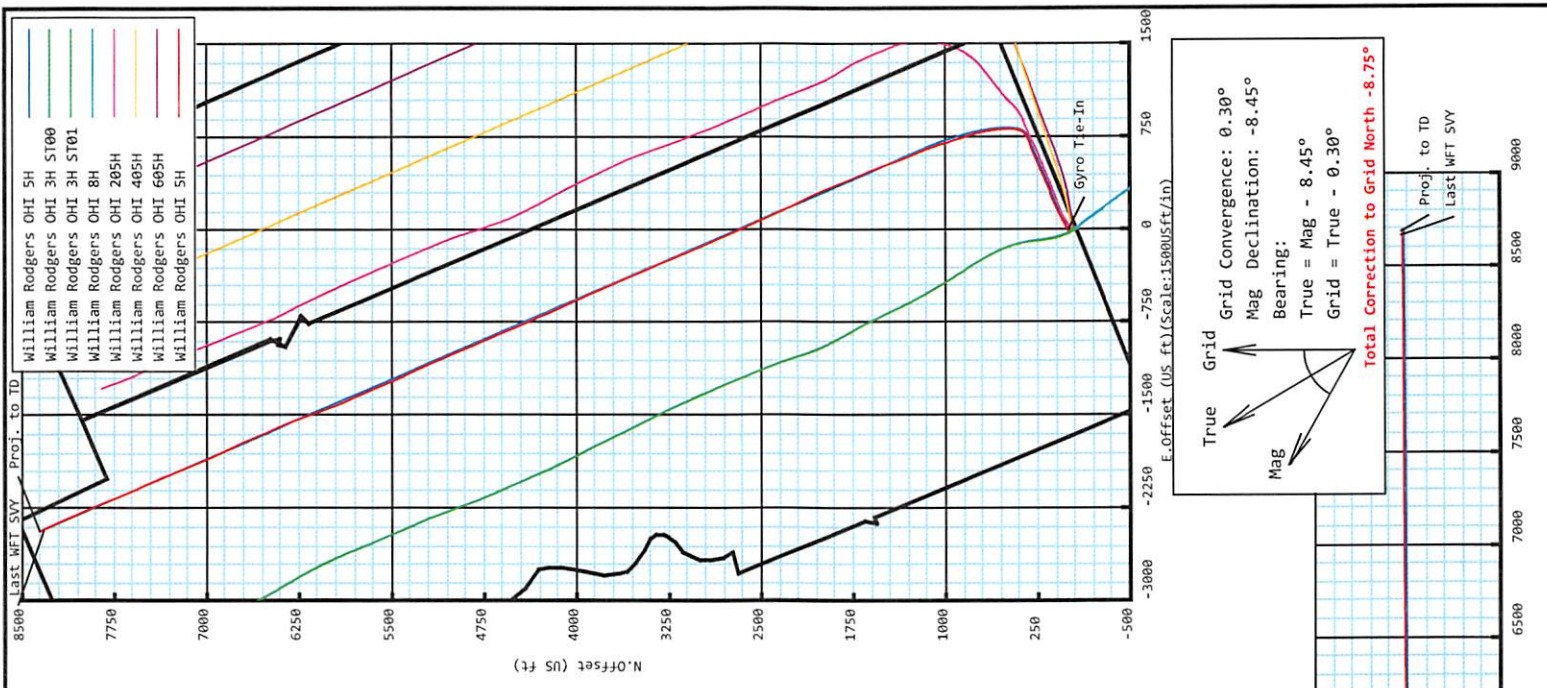
Type: Main-Well
File Number: Plan: P1:V7
Plan Folder: P1
Vertical Section: Position offset of origin from Slot centre:
+N/-S: 0.00USft Azimuth: 343.73°
+E/-W: 0.00USft

Magnetic Parameters:
Model: Field Strength: Declination: Dip: Date:
HOGM 52793(nT) -8.45° 67.52° 2017-07-31

Drawing By: GMR Date: 08/10/2017
Weatherford Drilling Services
7725 W. Reno, Ste. #220
Oklahoma City, OK 73127
+1.405.773.1100 Main
+1.405.773.1887 Fax



RECEIVED
Office of Oil and Gas
FEB 28 2018
WV Department of
Environmental Protection



William Rodgers OHI 5H

Field Name:	Map Units: US ft	Company Name: SOUTHWESTERN ENERGY
SOUTHWESTER N_OHIO CO, WV UTM NAD 83 (17N)	Vertical Reference Datum (VRD): Mean Sea Level	Projected Coordinate System: NAD83 / UTM zone 17N
	Comment:	

Site:	Units: US ft	North Reference: Grid	Convergence Angle: 0.30
William Rodgers Pad	Position:	Northing: 14566030.37 US ft	Latitude: 40.106971
		Easting: 1771224.60 US ft	Longitude: -80.532184
	Elevation above MSL: 1280.00 US ft		
	Comment:		

Slot:	Position (Relative to Site Centre)		
William Rodgers OHI 5H	+N/-S: 0.00 US ft	Northing: 14566030.37 US ft	Latitude: 40.106971
	+E/-W: 0.00 US ft	Easting: 1771224.60 US ft	Longitude: -80.532184
	Elevation above MSL: 1280.00 US ft		
	Comment:		

Well:	Type: Main well	UWI:
William Rodgers OHI 5H	File Number:	Comment:
	Closure Distance: 8695.03 US ft	Closure Azimuth: 343.74°
	Vertical Section: Position of Origin (Relative to Slot centre)	
	+N/-S: 0.00 US ft	+E/-W: 0.00 US ft
	Az: 343.73°	

Drill floor:	Survey Name: Definitive Survey		
Rig Height (Drill Floor): 26.00 US ft	Elevation above MSL: 1306.00 US ft	Inclination: 0.00°	Azimuth: 0.00°

Survey Name: Definitive Survey			
Date: 02/Nov/2015	Survey Tool: See Survey Tool Ranges below.	Comment:	Company:

Magnetic Model:				
Model Name: HDGM	Date: 31/Jul/2017	Field Strength: 52793.0nT	Declination: -8.45°	Dip: 67.52°

Tie Point:					
MD: 0.00 US ft	Inclination: 0.00°	Azimuth: 0.00°	TVD: 0.00 US ft	North Offset: 0.00 US ft	East Offset: 0.00 US ft

Survey Tool Ranges:			
Name	Start MD(USFt)	End MD(USFt)	Source Survey
GYRO-NS_OW	0.00	381.00	Gyro_01
MFAC_US_V2	381.00	779.00	WFT MWD_01-MFAC
MWD	779.00	2036.00	WFT MWD_01-MWD
MWD	2036.00	6174.00	WFT MWD_02
MWD	6174.00	14937.00	WFT MWD_03

Wellpath created using minimum curvature.

5D Survey Report

Survey Points: (Relative to Slot centre)(TVD relative to Drill Floor)										
MD (US ft)	Inc (°)	Az (°)	TVD (US ft)	VS (US ft)	N.Offset (US ft)	E.Offset (US ft)	Latitude (° ' ")	Longitude (° ' ")	DLS (°/100US ft)	Comment
0.00	0.00	0.00	0.00	0.00	0.00	0.00	40.106971	-80.532184	0.00	
23.00	0.00	0.00	23.00	0.00	0.00	0.00	40.106971	-80.532184	0.00	KB Offset
198.00	0.10	113.35	198.00	-0.10	-0.06	0.14	40.106971	-80.532183	0.06	
289.00	0.10	167.55	289.00	-0.23	-0.17	0.23	40.106971	-80.532183	0.10	
381.00	0.00	0.00	381.00	-0.31	-0.25	0.25	40.106970	-80.532183	0.11	Gyro Tie-In
442.00	0.04	289.33	442.00	-0.29	-0.24	0.23	40.106970	-80.532183	0.07	
503.00	0.53	328.01	503.00	-0.01	0.01	0.06	40.106971	-80.532184	0.82	
594.00	1.51	276.55	593.98	0.86	0.50	-1.36	40.106972	-80.532189	1.37	
686.00	3.30	272.95	685.90	2.20	0.77	-5.21	40.106973	-80.532202	1.95	
779.00	4.22	270.66	778.70	4.08	0.95	-11.30	40.106974	-80.532224	1.00	
872.00	4.99	267.73	871.40	6.05	0.83	-18.76	40.106974	-80.532251	0.87	
965.00	4.00	265.99	964.11	7.72	0.44	-26.04	40.106973	-80.532277	1.07	
1057.00	2.45	254.14	1055.96	8.42	-0.32	-31.13	40.106971	-80.532295	1.83	
1150.00	1.03	208.22	1148.92	7.83	-1.60	-33.44	40.106967	-80.532304	2.03	
1243.00	1.54	141.47	1241.90	6.08	-3.31	-33.06	40.106962	-80.532302	1.59	
1336.00	2.53	121.72	1334.84	3.40	-5.37	-30.53	40.106957	-80.532293	1.29	
1429.00	1.30	131.67	1427.79	0.98	-7.15	-28.00	40.106952	-80.532284	1.37	
1521.00	0.21	306.67	1519.78	0.23	-7.74	-27.35	40.106950	-80.532282	1.64	
1614.00	0.43	291.97	1612.78	0.58	-7.51	-27.82	40.106951	-80.532284	0.25	
1707.00	0.81	310.54	1705.78	1.35	-6.95	-28.64	40.106952	-80.532286	0.46	
1799.00	0.77	27.92	1797.77	2.34	-5.98	-28.84	40.106955	-80.532287	1.07	
1892.00	1.51	72.64	1890.75	2.81	-5.07	-27.38	40.106958	-80.532282	1.19	
1984.00	2.02	71.73	1982.71	2.89	-4.20	-24.68	40.106960	-80.532272	0.56	
2036.00	2.62	69.82	2034.67	3.00	-3.50	-22.70	40.106962	-80.532265	1.16	
2109.00	3.35	66.41	2107.57	3.39	-2.07	-19.18	40.106966	-80.532253	1.03	
2201.00	3.74	62.79	2199.39	4.30	0.38	-14.05	40.106972	-80.532234	0.49	
2294.00	3.43	60.09	2292.21	5.53	3.15	-8.94	40.106980	-80.532216	0.38	
2386.00	3.20	55.20	2384.05	6.99	5.99	-4.44	40.106988	-80.532200	0.40	
2479.00	4.46	52.49	2476.84	9.13	9.67	0.56	40.106998	-80.532182	1.37	
2572.00	6.31	57.80	2569.43	11.84	14.60	7.75	40.107011	-80.532156	2.06	
2664.00	8.52	63.22	2660.66	14.47	20.36	18.11	40.107027	-80.532119	2.52	
2757.00	10.77	62.13	2752.34	17.48	27.53	31.95	40.107046	-80.532069	2.43	
2850.00	13.02	59.57	2843.33	21.79	36.90	48.67	40.107072	-80.532009	2.48	
2942.00	15.14	62.63	2932.57	26.64	47.67	68.27	40.107101	-80.531939	2.44	
3035.00	15.22	63.56	3022.32	31.13	58.69	89.99	40.107131	-80.531861	0.28	
3125.00	14.45	61.93	3109.32	35.51	69.24	110.48	40.107160	-80.531788	0.97	
3217.00	13.62	61.16	3198.57	40.22	79.86	130.09	40.107188	-80.531717	0.92	
3310.00	14.66	65.55	3288.76	44.28	90.02	150.40	40.107216	-80.531644	1.61	
3403.00	14.86	65.87	3378.69	47.58	99.76	171.99	40.107243	-80.531567	0.23	
3496.00	14.06	63.67	3468.74	51.18	109.65	193.00	40.107269	-80.531492	1.04	
3588.00	15.34	66.59	3557.73	54.65	119.44	214.19	40.107296	-80.531416	1.61	
3681.00	15.44	67.93	3647.40	57.43	128.98	236.95	40.107322	-80.531334	0.40	
3774.00	14.41	65.79	3737.26	60.28	138.38	258.98	40.107347	-80.531255	1.26	
3867.00	14.59	73.02	3827.30	62.02	146.54	280.74	40.107369	-80.531177	1.95	
3959.00	14.05	75.07	3916.45	61.91	152.81	302.61	40.107386	-80.531099	0.81	
4052.00	12.24	74.72	4007.00	61.47	158.31	323.03	40.107401	-80.531026	1.95	
4145.00	12.46	67.51	4097.86	62.39	164.75	341.81	40.107419	-80.530958	1.67	
4237.00	12.43	60.36	4187.70	65.75	173.44	359.58	40.107442	-80.530895	1.67	
4330.00	13.01	65.19	4278.42	69.62	182.78	377.79	40.107468	-80.530829	1.30	
4423.00	13.45	66.53	4368.95	72.53	191.48	397.21	40.107491	-80.530760	0.58	
4515.00	14.82	65.35	4458.17	75.59	200.65	417.72	40.107516	-80.530686	1.52	
4608.00	15.32	64.59	4547.97	79.27	210.89	439.63	40.107544	-80.530608	0.58	
4701.00	15.70	64.90	4637.58	83.16	221.50	462.12	40.107573	-80.530527	0.42	
4793.00	16.59	68.09	4725.95	86.36	231.68	485.58	40.107600	-80.530443	1.37	
4886.00	16.32	67.59	4815.14	89.06	241.61	509.97	40.107627	-80.530356	0.33	
4979.00	16.90	68.49	4904.26	91.69	251.55	534.63	40.107654	-80.530267	0.68	
5071.00	16.68	67.10	4992.34	94.44	261.59	559.23	40.107681	-80.530179	0.50	
5164.00	15.75	65.91	5081.64	97.70	271.94	583.05	40.107709	-80.530094	1.06	
5257.00	16.38	67.74	5171.01	100.78	282.06	606.71	40.107737	-80.530009	0.87	

RECEIVED
Office of Oil and Gas
FEB 28 2018
WV Department of
Environmental Protection

5D Survey Report

Survey Points: (Relative to Slot centre)(TVD relative to Drill Floor)										
MD (US ft)	Inc (°)	Az (°)	TVD (US ft)	VS (US ft)	N.Offset (US ft)	E.Offset (US ft)	Latitude (° ' ")	Longitude (° ' ")	DLS (%/100US ft)	Comment
5349.00	16.44	66.87	5259.26	103.69	292.09	630.69	40.107764	-80.529923	0.27	
5442.00	16.14	70.77	5348.53	105.93	301.51	655.00	40.107790	-80.529836	1.22	
5535.00	14.92	71.21	5438.13	107.12	309.63	678.54	40.107811	-80.529751	1.32	
5627.00	14.92	70.84	5527.03	108.24	317.33	700.94	40.107832	-80.529671	0.10	
5720.00	16.30	67.05	5616.60	110.36	326.35	724.27	40.107857	-80.529588	1.84	
5813.00	15.59	64.80	5706.02	113.82	336.76	747.59	40.107885	-80.529504	1.01	
5859.00	15.47	58.30	5750.35	116.41	342.61	758.41	40.107901	-80.529465	3.79	
5905.00	16.03	49.68	5794.63	120.64	349.95	768.47	40.107921	-80.529429	5.23	
5951.00	16.73	39.89	5838.77	126.91	359.14	777.56	40.107946	-80.529396	6.18	
5998.00	18.04	31.53	5883.63	135.57	370.54	785.71	40.107977	-80.529367	5.99	
6044.00	20.26	23.82	5927.09	146.45	383.90	792.65	40.108014	-80.529342	7.31	
6091.00	21.78	17.29	5970.96	159.94	399.67	798.53	40.108057	-80.529321	5.94	
6137.00	23.14	11.35	6013.48	175.07	416.68	802.84	40.108104	-80.529305	5.75	
6174.00	25.60	7.86	6047.18	188.81	431.73	805.37	40.108145	-80.529296	7.70	
6266.00	29.87	1.47	6128.61	228.79	474.35	808.68	40.108262	-80.529283	5.65	
6313.00	33.01	357.79	6168.71	252.37	498.85	808.48	40.108329	-80.529283	7.83	
6359.00	36.63	355.48	6206.47	277.97	525.06	806.92	40.108401	-80.529288	8.37	
6405.00	40.45	354.97	6242.44	306.05	553.62	804.53	40.108480	-80.529296	8.33	
6452.00	43.85	354.73	6277.28	336.99	585.03	801.69	40.108566	-80.529306	7.24	
6498.00	47.57	352.62	6309.40	369.42	617.74	798.05	40.108656	-80.529318	8.73	
6544.00	51.72	350.10	6339.18	404.15	652.38	792.76	40.108751	-80.529336	9.94	
6591.00	54.77	348.02	6367.31	441.64	689.35	785.60	40.108853	-80.529361	7.39	
6637.00	58.12	345.82	6392.73	479.91	726.67	776.92	40.108955	-80.529392	8.30	
6684.00	62.01	344.81	6416.18	520.61	766.06	766.59	40.109064	-80.529428	8.48	
6730.00	65.34	343.68	6436.58	561.83	805.73	755.39	40.109173	-80.529467	7.57	
6776.00	68.34	342.87	6454.67	604.12	846.23	743.21	40.109284	-80.529510	6.72	
6823.00	70.61	342.79	6471.14	648.13	888.28	730.22	40.109400	-80.529556	4.83	
6869.00	72.48	342.32	6485.71	691.75	929.91	717.14	40.109514	-80.529602	4.18	
6916.00	73.96	342.15	6499.27	736.73	972.76	703.41	40.109632	-80.529650	3.17	
6962.00	75.54	342.52	6511.37	781.10	1015.05	689.94	40.109748	-80.529697	3.52	
7008.00	79.46	342.29	6521.33	825.99	1057.85	676.37	40.109866	-80.529745	8.54	
7055.00	84.07	341.81	6528.06	872.47	1102.09	662.04	40.109988	-80.529795	9.86	
7101.00	87.78	339.45	6531.33	918.28	1145.36	646.82	40.110107	-80.529849	9.55	
7148.00	90.62	337.72	6531.98	965.08	1189.11	629.66	40.110227	-80.529910	7.08	
7240.00	90.55	337.08	6531.04	1056.51	1274.04	594.31	40.110461	-80.530034	0.70	
7333.00	90.62	339.68	6530.09	1149.09	1360.48	560.05	40.110699	-80.530155	2.80	
7426.00	90.74	339.73	6528.99	1241.86	1447.70	527.79	40.110939	-80.530269	0.14	
7519.00	91.32	340.32	6527.32	1334.65	1535.09	496.03	40.111179	-80.530381	0.89	
7611.00	90.06	337.82	6526.21	1426.33	1621.01	463.17	40.111416	-80.530497	3.04	
7704.00	89.94	336.63	6526.21	1518.73	1706.75	427.17	40.111652	-80.530624	1.29	
7797.00	89.63	337.49	6526.56	1611.09	1792.40	390.92	40.111887	-80.530752	0.98	
7889.00	89.88	338.65	6526.95	1702.64	1877.74	356.56	40.112122	-80.530873	1.29	
7982.00	90.55	338.28	6526.60	1795.25	1964.25	322.43	40.112360	-80.530994	0.82	
8075.00	90.43	334.91	6525.81	1887.51	2049.58	285.49	40.112595	-80.531124	3.63	
8167.00	90.43	333.11	6525.12	1978.19	2132.27	245.18	40.112823	-80.531267	1.96	
8260.00	90.55	333.45	6524.32	2069.64	2215.33	203.36	40.113052	-80.531415	0.39	
8353.00	90.68	335.07	6523.32	2161.36	2299.10	162.98	40.113282	-80.531558	1.75	
8445.00	91.17	335.36	6521.84	2252.34	2382.61	124.42	40.113512	-80.531694	0.62	
8538.00	90.74	336.23	6520.29	2344.43	2467.42	86.29	40.113745	-80.531829	1.04	
8631.00	90.80	336.87	6519.04	2436.69	2552.73	49.29	40.113980	-80.531960	0.69	
8724.00	90.86	335.81	6517.69	2528.91	2637.91	11.97	40.114215	-80.532091	0.85	
8816.00	90.92	336.59	6516.26	2620.11	2722.07	-25.15	40.114446	-80.532223	0.52	
8909.00	90.86	337.07	6514.82	2712.42	2807.56	-61.74	40.114682	-80.532352	1.20	
9002.00	91.54	336.19	6512.87	2804.69	2892.91	-98.62	40.114917	-80.532482	1.23	
9094.00	90.86	337.09	6510.94	2895.96	2977.35	-135.09	40.115149	-80.532611	0.94	
9187.00	91.17	337.91	6509.30	2988.40	3063.26	-170.67	40.115385	-80.532737	0.34	
9280.00	90.92	337.71	6507.60	3080.89	3149.35	-205.79	40.115622	-80.532861	0.39	
9372.00	90.80	337.37	6506.22	3172.34	3234.37	-240.94	40.115856	-80.532985	0.50	
9465.00	90.74	336.91	6504.97	3264.72	3320.05	-277.06	40.116092	-80.533112		

RECEIVED
Office of Oil and Gas
FEB 28 2018
WV Department
Environmental Protection

5D Survey Report

Survey Points: (Relative to Slot centre)(TVD relative to Drill Floor)										
MD (US ft)	Inc (°)	Az (°)	TVD (US ft)	VS (US ft)	N.Offset (US ft)	E.Offset (US ft)	Latitude (° ' ")	Longitude (° ' ")	DLS (°/100US ft)	Comment
9558.00	90.62	336.05	6503.87	3356.96	3405.32	-314.17	40.116327	-80.533244	0.93	
9650.00	90.55	337.15	6502.93	3448.25	3489.75	-350.71	40.116559	-80.533373	1.20	
9743.00	90.00	336.46	6502.48	3540.57	3575.23	-387.34	40.116794	-80.533502	0.95	
9836.00	90.25	336.70	6502.28	3632.84	3660.57	-424.30	40.117029	-80.533633	0.37	
9925.00	90.25	337.00	6501.89	3721.20	3742.40	-459.29	40.117254	-80.533756	0.34	
10018.00	90.25	336.23	6501.48	3813.48	3827.76	-496.20	40.117489	-80.533887	0.83	
10111.00	90.25	335.89	6501.08	3905.65	3912.76	-533.94	40.117723	-80.534020	0.37	
10203.00	90.62	335.99	6500.38	3996.80	3996.76	-571.44	40.117955	-80.534153	0.42	
10296.00	90.43	334.71	6499.53	4088.80	4081.28	-610.23	40.118187	-80.534290	1.39	
10389.00	90.00	335.16	6499.18	4180.71	4165.52	-649.63	40.118419	-80.534429	0.67	
10481.00	90.31	337.16	6498.93	4271.90	4249.67	-686.81	40.118651	-80.534561	2.20	
10574.00	90.06	335.84	6498.63	4364.16	4334.95	-723.89	40.118885	-80.534692	1.44	
10667.00	90.12	336.51	6498.48	4456.35	4420.03	-761.46	40.119120	-80.534824	0.72	
10760.00	90.35	336.62	6498.10	4548.62	4505.36	-798.45	40.119354	-80.534955	0.27	
10850.00	90.06	338.22	6497.78	4638.07	4588.45	-833.00	40.119583	-80.535077	1.81	
10942.00	90.18	337.10	6497.59	4729.56	4673.55	-867.97	40.119817	-80.535201	1.22	
11032.00	89.94	336.18	6497.49	4818.87	4756.17	-903.66	40.120045	-80.535327	1.06	
11125.00	90.00	336.62	6497.54	4911.11	4841.39	-940.89	40.120279	-80.535458	0.48	
11217.00	90.80	337.40	6496.90	5002.47	4926.08	-976.82	40.120512	-80.535585	1.21	
11310.00	90.99	336.71	6495.45	5094.83	5011.71	-1013.07	40.120748	-80.535713	0.77	
11400.00	91.17	336.99	6493.75	5184.16	5094.45	-1048.45	40.120976	-80.535838	0.37	
11493.00	90.37	335.98	6492.50	5276.41	5179.72	-1085.55	40.121210	-80.535969	1.39	
11586.00	90.00	335.72	6492.20	5368.53	5264.57	-1123.60	40.121444	-80.536104	0.49	
11678.00	90.74	335.41	6491.60	5459.60	5348.33	-1161.65	40.121675	-80.536239	0.87	
11771.00	91.60	334.78	6489.71	5551.52	5432.66	-1200.81	40.121907	-80.536377	1.15	
11864.00	89.57	337.59	6488.76	5643.70	5517.73	-1238.35	40.122141	-80.536510	3.73	
11957.00	90.31	337.31	6488.85	5736.14	5603.62	-1274.02	40.122377	-80.536636	0.85	
12050.00	90.31	335.86	6488.35	5828.41	5688.96	-1310.97	40.122612	-80.536766	1.56	
12142.00	89.75	335.55	6488.30	5919.51	5772.81	-1348.82	40.122843	-80.536900	0.70	
12235.00	90.25	336.23	6488.30	6011.64	5857.69	-1386.81	40.123076	-80.537034	0.91	
12328.00	90.06	337.87	6488.05	6104.01	5943.33	-1423.08	40.123312	-80.537163	1.78	
12421.00	90.18	338.93	6487.86	6196.60	6029.80	-1457.31	40.123550	-80.537283	1.15	
12514.00	90.00	340.73	6487.71	6289.38	6117.09	-1489.38	40.123790	-80.537396	1.95	
12606.00	90.74	341.28	6487.12	6381.28	6204.08	-1519.32	40.124030	-80.537502	1.00	
12699.00	90.06	339.36	6486.47	6474.10	6291.64	-1550.64	40.124270	-80.537612	2.19	
12792.00	90.18	337.75	6486.27	6566.72	6378.20	-1584.64	40.124509	-80.537732	1.74	
12885.00	90.53	336.26	6485.70	6659.08	6463.80	-1620.97	40.124744	-80.537861	1.65	
12977.00	90.68	337.55	6484.72	6750.42	6548.42	-1657.05	40.124977	-80.537988	1.41	
13070.00	90.00	336.79	6484.17	6842.81	6634.14	-1693.13	40.125213	-80.538116	1.10	
13163.00	90.37	335.71	6483.87	6935.01	6719.26	-1730.59	40.125447	-80.538248	1.23	
13256.00	90.49	334.86	6483.17	7027.00	6803.74	-1769.47	40.125680	-80.538386	0.92	
13349.00	90.12	334.71	6482.68	7118.87	6887.87	-1809.09	40.125911	-80.538526	0.43	
13441.00	90.31	335.45	6482.33	7209.82	6971.31	-1847.85	40.126141	-80.538663	0.83	
13534.00	90.06	337.32	6482.03	7302.05	7056.51	-1885.11	40.126376	-80.538795	2.03	
13627.00	90.18	337.84	6481.84	7394.52	7142.48	-1920.58	40.126612	-80.538920	0.57	
13720.00	90.00	338.20	6481.69	7487.06	7228.72	-1955.38	40.126849	-80.539043	0.43	
13812.00	90.25	337.91	6481.49	7578.61	7314.06	-1989.77	40.127084	-80.539164	0.42	
13905.00	90.37	335.86	6480.99	7670.94	7399.58	-2026.27	40.127320	-80.539293	2.21	
13998.00	90.18	335.46	6480.54	7763.01	7484.32	-2064.60	40.127553	-80.539429	0.48	
14091.00	90.12	336.93	6480.30	7855.21	7569.40	-2102.14	40.127787	-80.539561	1.58	
14184.00	90.31	336.79	6479.95	7947.54	7654.92	-2138.69	40.128022	-80.539691	0.25	
14276.00	90.18	337.45	6479.56	8038.93	7739.68	-2174.45	40.128256	-80.539817	0.73	
14369.00	90.12	337.44	6479.31	8131.37	7825.57	-2210.13	40.128492	-80.539943	0.07	
14462.00	90.06	337.23	6479.17	8223.79	7911.38	-2245.96	40.128728	-80.540070	0.23	
14555.00	90.37	336.72	6478.82	8316.14	7996.97	-2282.34	40.128964	-80.540198	0.64	
14648.00	90.62	336.72	6478.01	8408.44	8082.40	-2319.09	40.129199	-80.540328	0.27	
14740.00	90.37	337.15	6477.22	8499.79	8167.04	-2355.13	40.129432	-80.540455	0.54	
14830.00	90.55	335.97	6476.50	8589.08	8249.61	-2390.93	40.129659	-80.540582	1.33	

RECEIVED
Office of Oil and Gas
FEB 28 2018
Weatherford International

5D Survey Report

Survey Points: (Relative to Slot centre)(TVD relative to Drill Floor)										
MD (US ft)	Inc (°)	Az (°)	TVD (US ft)	VS (US ft)	N.Offset (US ft)	E.Offset (US ft)	Latitude (° ' ")	Longitude (° ' ")	DLS (%/100US ft)	Comment
14914.00	90.74	335.56	6475.55	8672.27	8326.20	-2425.41	40.129870	-80.540704	0.54	Last WFT SVY
14937.00	90.74	335.56	6475.25	8695.03	8347.14	-2434.93	40.129928	-80.540738	0.00	Proj. to TD

RECEIVED
Office of Oil and Gas
FEB 28 2018
WV Department of
Environmental Protection