



SOUTHWESTERN ENERGY

Location: Ohio County, WV
 Field: Ohio
 Facility: GW.Rentals LLC OH 205H
 Wellbore: GW.Rentals LLC OH 205H PWB



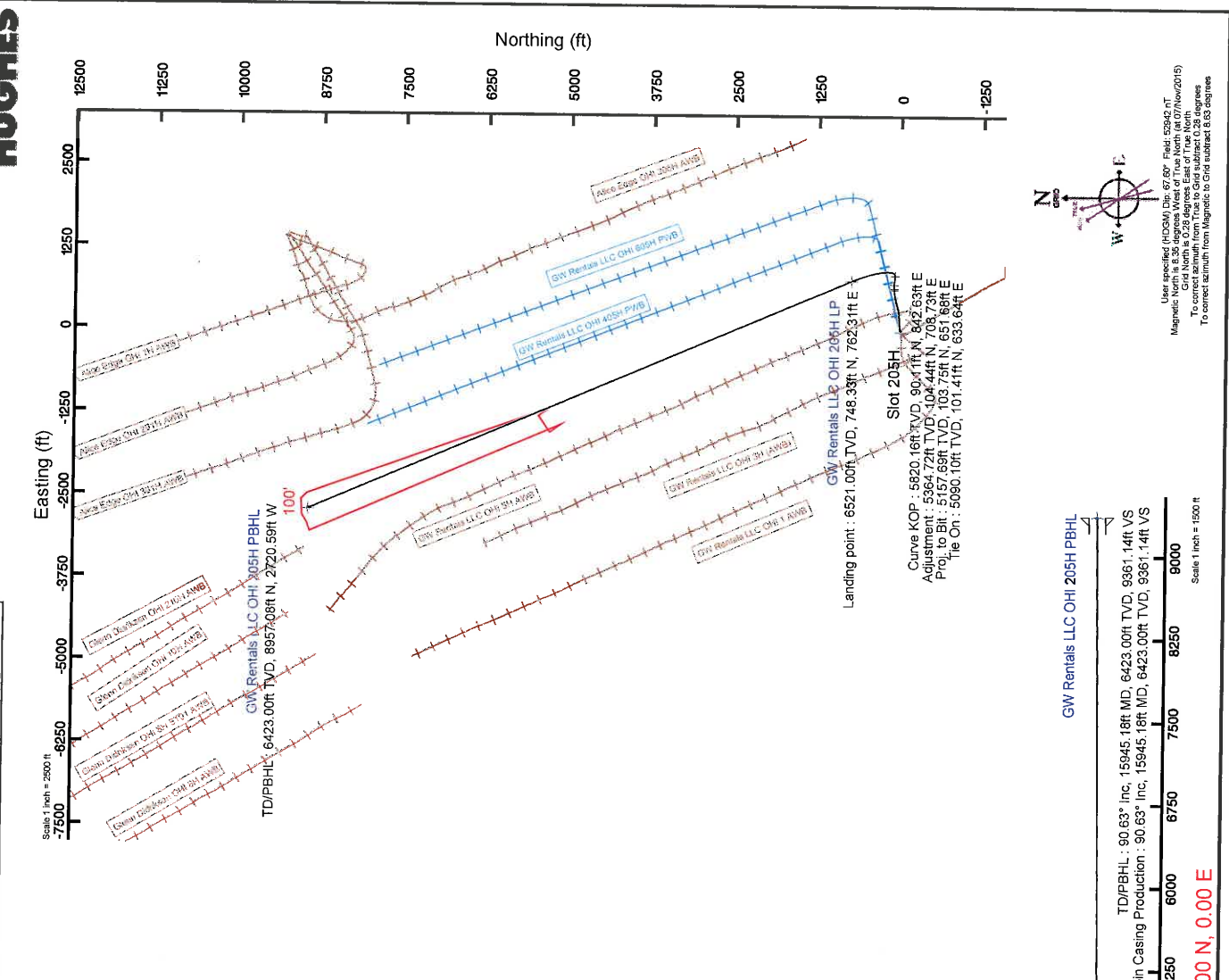
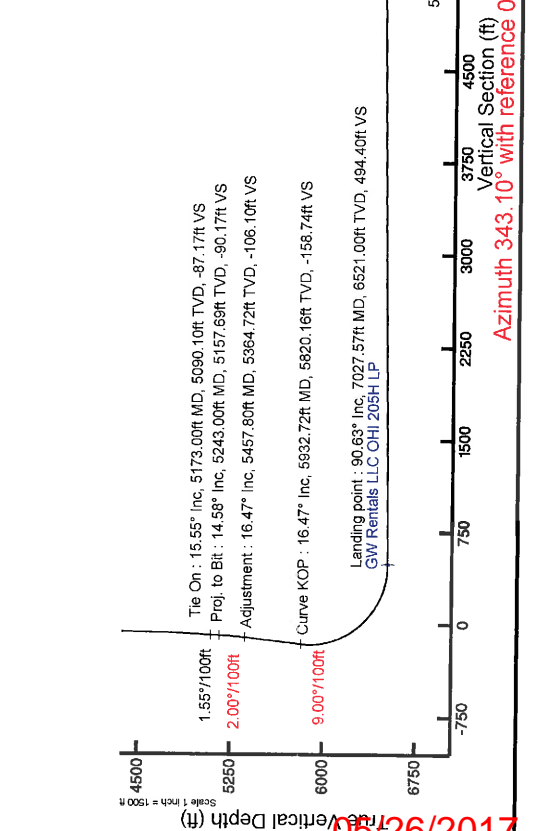
Plot reference wellpath is GW.Rentals LLC OH 205H PWB Rev-D.0
 True vertical depths are referenced to SDC 41 (RT)
 Measured depths are referenced to SDC 41 (RT)
 SDC 41 (RT) to Mean Sea Level: 1273 feet
 Mean Sea Level to Mud line (At Slot: Slot 205H): -1247 feet
 Coordinates are in feet referenced to Slot

Location Information			
Facility Name	Grid East (US ft)	Grid North (US ft)	Longitude
GW.Rentals LLC OH 205H PWB	176191.1920	14554083.900	80°33'56.509"W
Slot	Local E (ft)	Grid East (US ft)	Longitude
Slot 205H	15.45	1761935.620	80°33'56.203"W
SDC 41 (RT) to Mud line (At Slot: Slot 205H)			
Mean Sea Level to Mud line (At Slot: Slot 205H)	268		
SDC 41 (RT) to Mean Sea Level	-1247ft		
SDC 41 (RT) to Mean Sea Level	1273ft		

Targets			
Name	MD (ft)	TVD (ft)	Local E (ft)
GW.Rentals LLC OH 205H PWB	1596.18	6423.00	897.08
GW.Rentals LLC OH 205H LP	7027.57	5621.00	748.33
GW.Rentals LLC OH LL1	8750.00	0.00	0.00

Hole and Casing Sections			
Name	Start MD (ft)	End MD (ft)	Local E (ft)
17.5in Open Hole	26.00	600.01	634.01
13.375in Casing Surface	26.00	660.01	634.01
12.25in Open Hole	660.01	2081.03	1421.02
8.625in Casing Intermediate	26.00	2081.03	2056.00
8.75in Open Hole	2081.03	6052.62	3971.59
8.5in Open Hole	6052.62	15945.18	8662.56
5.5in Casing Production	26.00	15945.18	15919.18

Well Profile Data			
Design Comment	MD (ft)	Inc. (°)	Az. (°)
Tie On	5173.00	15.55°	83.520
Proj. to Bit	5243.00	14.580	81.660
Adjustment	5457.80	16.472	96.112
Curve KOP	5932.72	16.472	96.112
Landing point	7027.57	90.630	337.009
TD/PBHL	15945.18	90.630	337.009



Users specified (WGS84) as 83.520° East, 83.520° T
 Magnetic North is 8.36 degrees West of True North (at 07/10/2015)
 Grid North is 0.28 degrees East of True North
 To convert from True to Grid subtract 0.28 degrees
 To correct azimuth from magnetic to grid subtract 0.00 degrees

REFERENCE WELLPATH IDENTIFICATION	
Operator	SOUTHWESTERN ENERGY
Area	Ohio County, WV
Field	Ohio
Facility	GW Rentals LLC OHI Pad
Slot	Slot 205H
Well	GW Rentals LLC OHI 205H
Wellbore	GW Rentals LLC OHI 205H PWB

REPORT SETUP INFORMATION	
Projection System	NAD83 / UTM Zone 17 North, US feet
North Reference	Grid
Scale	0.999617
Convergence at slot	0.28° East
Software System	WellArchitect® 4.0.1
User	Hareluk
Report Generated	15/Nov/2015 at 11:09
Database/Source file	WellArchitectDB/GW_Rentals_LLC_OHI_205H_PWB.xml

	Local coordinates		Grid coordinates		Geographic coordinates	
	North [ft]	East [ft]	Easting [US ft]	Northing [US ft]	Latitude	Longitude
Slot Location	15.45	23.71	1761935.62	14554099.34	40°04'27.613"N	80°33'56.203"W
Facility Reference Pt			1761911.92	14554083.90	40°04'27.462"N	80°33'56.509"W
Field Reference Pt			0.00	0.00	0°00'00.000"	85°29'19.478"W

WELLPATH DATUM	
Calculation method	Minimum curvature
Horizontal Reference Pt	Slot
Vertical Reference Pt	SDC 41 (RT)
MD Reference Pt	SDC 41 (RT)
Field Vertical Reference	Mean Sea Level
	SDC 41 (RT) to Facility Vertical Datum
	SDC 41 (RT) to Mean Sea Level
	SDC 41 (RT) to Mud Line at Slot (Slot 205H)
	Section Origin
	Section Azimuth
	1273.00ft
	1273.00ft
	26.00ft
	N 0.00, E 0.00 ft
	343.10°



Planned Wellpath Report

GW Rentals LLC OHI 205H PWP Rev-D.0
Page 2 of 10



REFERENCE WELLPATH IDENTIFICATION

Operator	SOUTHWESTERN ENERGY	Slot	Slot 205H
Area	Ohio County, WV	Well	GW Rentals LLC OHI 205H
Field	Ohio	Wellbore	GW Rentals LLC OHI 205H PWB
Facility	GW Rentals LLC OHI Pad		

WELLPATH DATA (186 stations) † = interpolated/extrapolated station

MD [ft]	Inclination [°]	Azimuth [°]	TVD [ft]	Vert Sect [ft]	North [ft]	East [ft]	Grid East [US ft]	Grid North [US ft]	Latitude	Longitude	Closure Dist [ft]	Closure Dir [°]	DLS [°/100ft]	Build Rate [°/100ft]	Turn Rate [°/100ft]	Comments
0.00†	0.000	307.180	0.00	0.00	0.00	0.00	14554099.62	14554099.34	40°04'27.613"N	80°33'56.203"W	0.00	0.000	0.00	0.00	0.00	
26.00	0.000	307.180	26.00	0.00	0.00	0.00	1761935.62	14554099.34	40°04'27.613"N	80°33'56.203"W	0.00	0.000	0.00	0.00	0.00	
100.00	0.180	307.180	100.00	0.09	0.07	-0.09	1761935.53	14554099.41	40°04'27.614"N	80°33'56.204"W	0.12	307.180	0.24	0.24	0.00	
200.00	0.270	337.530	200.00	0.46	0.38	-0.31	1761935.31	14554099.72	40°04'27.617"N	80°33'56.207"W	0.49	321.204	0.15	0.09	30.35	
300.00	0.310	359.740	300.00	0.95	0.87	-0.40	1761935.22	14554100.21	40°04'27.622"N	80°33'56.208"W	0.96	335.386	0.12	0.04	22.21	
400.00	0.390	0.900	400.00	1.53	1.48	-0.39	1761935.23	14554100.82	40°04'27.628"N	80°33'56.208"W	1.53	345.076	0.08	0.08	1.16	
500.00	0.250	30.670	499.99	2.00	2.01	-0.28	1761935.34	14554101.35	40°04'27.633"N	80°33'56.207"W	2.03	352.115	0.21	-0.14	29.77	
600.00	0.280	41.000	599.99	2.28	2.38	-0.01	1761935.61	14554101.72	40°04'27.637"N	80°33'56.203"W	2.38	359.837	0.06	0.03	10.33	
700.00	0.260	42.830	699.99	2.53	2.73	0.31	1761935.93	14554102.07	40°04'27.640"N	80°33'56.199"W	2.75	6.426	0.02	-0.02	1.83	
800.00	0.370	78.640	799.99	2.61	2.96	0.78	1761936.40	14554102.30	40°04'27.643"N	80°33'56.193"W	3.06	14.724	0.22	0.11	35.81	
900.00	0.250	68.370	899.99	2.60	3.11	1.30	1761936.92	14554102.45	40°04'27.644"N	80°33'56.186"W	3.37	22.674	0.13	-0.12	-10.27	
943.66	0.440	67.650	943.65	2.62	3.21	1.54	1761937.16	14554102.54	40°04'27.645"N	80°33'56.183"W	3.56	25.682	0.44	0.44	-1.69	
1006.00	0.340	49.590	1005.99	2.72	3.42	1.90	1761937.52	14554102.76	40°04'27.647"N	80°33'56.179"W	3.91	29.126	0.25	-0.16	-28.94	
1101.00	0.270	61.860	1100.99	2.87	3.71	2.32	1761937.93	14554103.04	40°04'27.650"N	80°33'56.173"W	4.37	32.006	0.10	-0.07	12.92	
1195.00	0.500	44.480	1194.98	3.11	4.10	2.80	1761938.42	14554103.44	40°04'27.654"N	80°33'56.167"W	4.97	34.301	0.27	0.24	-18.49	
1289.00	0.240	66.650	1288.98	3.33	4.47	3.27	1761938.89	14554103.81	40°04'27.657"N	80°33'56.161"W	5.54	36.141	0.31	-0.28	23.59	
1383.00	0.390	107.830	1382.98	3.17	4.45	3.75	1761939.37	14554103.79	40°04'27.657"N	80°33'56.155"W	5.82	40.116	0.28	0.16	43.81	
1478.00	0.240	100.760	1477.98	2.89	4.32	4.26	1761939.87	14554103.66	40°04'27.656"N	80°33'56.148"W	6.06	44.588	0.16	-0.16	-7.44	
1573.00	0.220	183.170	1572.98	2.63	4.10	4.44	1761940.06	14554103.44	40°04'27.654"N	80°33'56.146"W	6.04	47.301	0.32	-0.02	86.75	
1668.00	0.240	105.920	1667.98	2.35	3.86	4.62	1761940.24	14554103.24	40°04'27.651"N	80°33'56.144"W	6.02	50.126	0.30	0.02	-81.32	
1763.00	0.080	160.820	1762.98	2.18	3.74	4.83	1761940.45	14554103.08	40°04'27.650"N	80°33'56.141"W	6.11	52.250	0.22	-0.17	57.79	
1858.00	0.380	106.390	1857.98	1.94	3.59	5.16	1761940.78	14554102.93	40°04'27.649"N	80°33'56.137"W	6.29	55.151	0.36	0.32	-57.29	
1953.00	0.200	75.700	1952.98	1.76	3.54	5.62	1761941.24	14554102.88	40°04'27.648"N	80°33'56.131"W	6.65	57.772	0.24	-0.19	-32.31	
2031.03†	0.308	82.230	2031.00	1.72	3.61	5.96	1761941.58	14554102.94	40°04'27.649"N	80°33'56.126"W	6.97	58.831	0.14	0.14	8.37	Base Big Injunc: 2031.00' TVD
2061.00	0.350	83.660	2060.97	1.69	3.63	6.13	1761941.75	14554102.97	40°04'27.649"N	80°33'56.124"W	7.12	59.397	0.14	0.14	4.77	
2135.00	0.230	103.610	2134.97	1.57	3.62	6.50	1761942.12	14554102.96	40°04'27.649"N	80°33'56.119"W	7.44	60.910	0.21	-0.16	26.96	
2170.03†	0.203	119.201	2170.00	1.49	3.57	6.62	1761942.24	14554102.91	40°04'27.648"N	80°33'56.118"W	7.52	61.674	0.18	-0.08	44.51	Berea: 2170.00' TVD
2229.00	0.200	150.560	2228.97	1.31	3.43	6.77	1761942.38	14554102.77	40°04'27.647"N	80°33'56.116"W	7.58	63.116	0.18	0.00	53.17	
2325.00	0.170	169.580	2324.97	1.01	3.14	6.87	1761942.49	14554102.48	40°04'27.644"N	80°33'56.115"W	7.56	65.421	0.07	-0.03	19.81	
2419.00	0.420	88.580	2418.97	0.78	3.02	7.24	1761942.86	14554102.35	40°04'27.643"N	80°33'56.110"W	7.85	67.399	0.46	0.27	-86.17	



Planned Wellpath Report

GW Rentals LLC OHI 205H PWP Rev-D.0

Page 3 of 10



REFERENCE WELLPATH IDENTIFICATION

Operator	SOUTHWESTERN ENERGY	Slot	Slot 205H
Area	Ohio County, WV	Well	GW Rentals LLC OHI 205H
Field	Ohio	Wellbore	GW Rentals LLC OHI 205H PWB
Facility	GW Rentals LLC OHI Pad		

WELLPATH DATA (186 stations)

MD [ft]	Inclination [°]	Azimuth [°]	TVD [ft]	Vert Sect [ft]	North [ft]	East [ft]	Grid East [US ft]	Grid North [US ft]	Latitude	Longitude	Closure Dist [ft]	Closure Dir [°]	DLS [°/100ft]	Build Rate [°/100ft]	Turn Rate [°/100ft]	Comments
2497.00	1.970	86.170	2496.95	0.40	3.11	8.87	1761944.48	14554102.45	40°04'27.644"N	80°33'56.089"W	9.40	70.661	1.99	1.99	-3.09	
2610.00	4.110	74.740	2609.79	-0.16	4.31	14.71	1761950.33	14554103.65	40°04'27.655"N	80°33'56.014"W	15.33	73.680	1.96	1.89	-10.12	
2705.00	5.740	71.370	2704.43	-0.11	6.72	22.50	1761958.11	14554106.06	40°04'27.679"N	80°33'55.913"W	23.48	73.367	1.74	1.72	-3.55	
2800.00	7.460	71.900	2798.80	0.16	10.16	32.86	1761968.47	14554109.49	40°04'27.712"N	80°33'55.780"W	34.40	72.828	1.81	1.81	0.56	
2895.00	8.700	80.200	2892.86	-0.60	13.29	45.81	1761981.41	14554112.63	40°04'27.743"N	80°33'55.613"W	47.70	73.816	1.79	1.31	8.74	
2989.00	9.540	82.350	2985.67	-2.73	15.54	60.53	1761996.13	14554114.88	40°04'27.764"N	80°33'55.424"W	62.50	75.600	0.96	0.89	2.29	
3084.00	12.160	84.560	3078.96	-5.98	17.54	78.30	1762013.89	14554116.87	40°04'27.803"N	80°33'55.195"W	80.24	77.374	2.79	2.76	2.33	
3180.00	13.840	84.200	3172.50	-10.20	19.66	99.79	1762035.37	14554118.99	40°04'27.833"N	80°33'54.918"W	101.71	78.856	1.75	1.75	-0.37	
3275.00	15.160	87.290	3264.47	-15.43	21.39	123.50	1762059.07	14554120.72	40°04'27.819"N	80°33'54.613"W	125.34	80.173	1.61	1.39	3.25	
3370.00	15.980	90.720	3355.99	-22.44	21.82	148.99	1762084.55	14554121.15	40°04'27.822"N	80°33'54.285"W	150.58	81.669	1.30	0.86	3.61	
3465.00	15.150	85.910	3447.51	-29.15	22.54	174.45	1762110.00	14554121.87	40°04'27.828"N	80°33'53.958"W	175.90	82.639	1.61	-0.87	-5.06	
3561.00	14.690	87.630	3540.27	-34.98	25.94	199.12	1762134.66	14554123.27	40°04'27.840"N	80°33'53.640"W	200.55	83.146	0.67	-0.48	1.79	
3655.00	16.250	86.860	3630.86	-41.10	25.15	224.16	1762159.70	14554124.48	40°04'27.851"N	80°33'53.318"W	225.57	83.599	1.67	1.66	-0.82	
3751.00	17.570	85.720	3722.71	-47.46	26.97	252.03	1762187.55	14554126.30	40°04'27.868"N	80°33'52.960"W	253.46	83.893	1.42	1.37	-1.19	
3846.00	15.930	84.170	3813.68	-53.10	29.36	279.30	1762214.81	14554128.69	40°04'27.890"N	80°33'52.609"W	280.84	83.999	1.79	-1.73	-1.63	
3940.00	14.550	82.030	3904.37	-57.41	32.31	303.82	1762239.33	14554131.64	40°04'27.918"N	80°33'52.293"W	305.54	83.930	1.59	-1.47	-2.28	
4034.00	14.510	78.810	3995.36	-60.41	36.23	327.07	1762262.56	14554135.56	40°04'27.956"N	80°33'51.994"W	329.07	83.679	0.86	-0.04	-3.43	
4130.00	14.250	73.660	4088.36	-61.73	41.89	350.21	1762285.69	14554141.21	40°04'28.010"N	80°33'51.696"W	352.70	83.179	1.36	-0.27	-5.36	
4225.00	15.500	72.210	4180.18	-61.64	49.06	373.52	1762308.99	14554148.38	40°04'28.080"N	80°33'51.395"W	376.72	82.518	1.37	1.32	-1.53	
4320.00	16.460	73.930	4271.50	-61.64	56.66	398.54	1762334.00	14554155.98	40°04'28.154"N	80°33'51.073"W	402.54	81.908	1.13	1.01	1.81	
4414.00	16.430	76.300	4361.66	-62.58	63.50	424.25	1762359.70	14554162.81	40°04'28.220"N	80°33'50.742"W	428.97	81.488	0.71	-0.03	2.52	
4510.00	16.070	77.570	4453.82	-64.37	69.57	450.41	1762385.86	14554168.88	40°04'28.279"N	80°33'50.405"W	455.76	81.219	0.53	-0.38	1.32	
4604.00	15.900	76.330	4544.19	-66.11	75.41	475.63	1762411.07	14554174.73	40°04'28.336"N	80°33'50.080"W	481.57	80.990	0.41	-0.18	-1.32	
4699.00	16.220	75.860	4633.48	-67.48	81.73	501.14	1762436.57	14554181.04	40°04'28.397"N	80°33'49.752"W	507.76	80.737	0.36	0.34	-0.49	
4795.00	16.400	77.850	4727.62	-69.25	87.86	527.39	1762462.81	14554187.17	40°04'28.456"N	80°33'49.414"W	534.66	80.542	0.61	0.19	2.07	
4889.00	16.440	81.270	4817.79	-72.24	92.67	553.51	1762488.92	14554191.98	40°04'28.502"N	80°33'49.077"W	561.22	80.495	1.03	0.04	3.64	
4983.00	16.690	83.090	4907.89	-76.47	96.31	580.06	1762515.46	14554195.62	40°04'28.537"N	80°33'48.736"W	588.00	80.573	0.61	0.27	1.94	
5078.00	16.800	85.780	4998.86	-81.85	98.97	607.30	1762542.68	14554198.27	40°04'28.562"N	80°33'48.385"W	615.31	80.744	0.82	0.12	2.83	
5173.00	15.550	83.520	5090.10	-87.17	101.41	633.64	1762569.02	14554200.71	40°04'28.585"N	80°33'48.046"W	641.70	80.907	0.00	-1.32	-2.38	The On
5243.00	14.580	81.640	5157.69	-90.17	103.75	651.68	1762587.05	14554203.05	40°04'28.607"N	80°33'47.814"W	659.89	80.954	1.55	-1.39	-2.69	Prog to Bit

REFERENCE WELLPATH IDENTIFICATION

Operator	SOUTHWESTERN ENERGY	Slot	Slot 205H
Area	Ohio County, WV	Well	GW Rentals LLC OHI 205H
Field	Ohio	Wellbore	GW Rentals LLC OHI 205H PWB
Facility	GW Rentals LLC OHI Pad		

WELLPATH DATA (186 stations) † = interpolated/extrapolated station

MD [ft]	Inclination [°]	Azimuth [°]	TVD [ft]	Vert Sect [ft]	North [ft]	East [ft]	Grid East [US ft]	Grid North [US ft]	Latitude	Longitude	Closure Dist [ft]	Closure Dir [°]	DLS [°/100ft]	Buid Rate [°/100ft]	Turn Rate [°/100ft]	Comments
5273.00†	14.785	83.864	5186.71	-91.45	104.71	659.22	1762594.59	14554204.01	40°04'28.616"N	80°33'47.717"W	667.49	80.975	2.00	0.68	7.41	
5373.00†	15.614	90.813	5283.22	-97.93	105.88	685.37	1762620.72	14554205.18	40°04'28.627"N	80°33'47.380"W	693.50	81.218	2.00	0.83	6.95	
5457.80	16.472	96.112	5364.72	-106.10	104.44	708.73	1762644.08	14554203.74	40°04'28.611"N	80°33'47.080"W	716.39	81.617	2.00	1.01	6.25	Adjustment
5473.00†	16.472	96.112	5379.30	-107.78	103.98	713.02	1762648.37	14554203.28	40°04'28.607"N	80°33'47.025"W	720.56	81.703	0.00	0.00	0.00	
5573.00†	16.472	96.112	5475.20	-118.87	100.96	741.21	1762676.55	14554200.27	40°04'28.575"N	80°33'46.662"W	748.06	82.243	0.00	0.00	0.00	
5673.00†	16.472	96.112	5571.09	-129.95	97.95	769.41	1762704.73	14554197.25	40°04'28.544"N	80°33'46.300"W	775.62	82.745	0.00	0.00	0.00	
5773.00†	16.472	96.112	5666.99	-141.04	94.93	797.60	1762732.91	14554194.23	40°04'28.513"N	80°33'45.937"W	803.29	83.213	0.00	0.00	0.00	
5873.00†	16.472	96.112	5762.88	-152.12	91.91	825.79	1762761.09	14554191.46	40°04'28.482"N	80°33'45.575"W	830.89	83.649	0.00	0.00	0.00	
5932.72	16.472	96.112	5820.16	-158.74	90.11	842.63	1762777.93	14554189.41	40°04'28.463"N	80°33'45.358"W	847.43	83.896	0.00	0.00	0.00	Curve KOP
5973.00†	15.107	83.736	5858.92	-161.94	90.07	833.53	1762788.82	14554189.38	40°04'28.462"N	80°33'45.218"W	858.27	83.976	9.00	-3.39	-30.73	
6021.67†	14.508	66.696	5906.00	-162.43	93.18	865.44	1762800.72	14554192.48	40°04'28.492"N	80°33'45.065"W	870.44	83.855	9.00	-1.23	-35.01	Upper Rhinestreet. 5906.00' TVD
6073.00†	15.246	48.861	5955.63	-158.94	100.16	876.43	1762811.71	14554199.46	40°04'28.561"N	80°33'44.923"W	882.14	83.480	9.00	1.44	-34.75	
6162.50†	19.252	24.979	6041.20	-143.10	121.31	891.55	1762826.83	14554220.61	40°04'28.769"N	80°33'44.727"W	899.76	82.251	9.00	4.48	-26.68	Lower Rhinestreet. 6041.20' TVD
6173.00†	19.878	22.867	6051.09	-140.44	124.53	892.97	1762828.25	14554223.82	40°04'28.801"N	80°33'44.709"W	901.61	82.061	9.00	5.97	-20.11	
6232.91†	23.844	13.007	6106.70	-122.10	145.73	899.66	1762834.93	14554245.01	40°04'29.010"N	80°33'44.621"W	911.39	80.799	9.00	6.62	-16.46	Basal Rhinestreet. 6106.70' TVD
6273.00†	26.764	8.039	6142.95	-106.89	162.57	902.75	1762838.02	14554261.84	40°04'29.176"N	80°33'44.580"W	917.27	79.792	9.00	7.28	-12.39	
6313.85†	29.883	3.934	6178.90	-89.03	181.83	904.73	1762840.00	14554281.10	40°04'29.367"N	80°33'44.554"W	922.82	78.636	9.00	7.64	-10.05	Cashaqua. 6178.90' TVD
6373.00†	34.580	359.219	6228.93	-59.11	213.34	905.52	1762840.79	14554312.60	40°04'29.678"N	80°33'44.542"W	930.31	76.743	9.00	7.94	-7.97	
6393.45†	36.239	357.845	6245.60	-47.69	225.18	905.21	1762840.48	14554324.44	40°04'29.795"N	80°33'44.545"W	932.80	76.030	9.00	8.11	-6.72	Middlesex. 6245.60' TVD
6431.29†	39.347	355.569	6275.50	-25.15	248.33	908.86	1762839.13	14554347.57	40°04'30.024"N	80°33'44.561"W	937.35	74.638	9.00	8.21	-6.01	Lower Middlesex. 6275.5' TVD
6473.00†	42.817	353.388	6306.94	1.71	275.60	901.21	1762836.48	14554374.83	40°04'30.293"N	80°33'44.593"W	942.41	72.996	9.00	8.32	-5.23	
6484.63†	43.791	352.831	6315.40	9.57	283.52	900.25	1762833.52	14554382.75	40°04'30.372"N	80°33'44.605"W	943.84	72.519	9.00	8.38	-4.79	Burket. 6315.40' TVD
6519.73†	46.747	351.261	6340.10	34.20	308.21	896.79	1762832.07	14554407.43	40°04'30.616"N	80°33'44.648"W	948.28	71.033	9.00	8.42	-4.47	Tully. 6340.10' TVD
6573.00†	51.269	349.150	6375.04	74.09	347.81	889.93	1762825.21	14554447.02	40°04'31.007"N	80°33'44.734"W	955.48	68.653	9.00	8.49	-3.96	
6578.24†	51.716	348.957	6378.30	78.16	351.84	889.15	1762824.43	14554451.04	40°04'31.047"N	80°33'44.743"W	956.23	68.411	9.00	8.53	-3.68	Hamilton. 6378.30' TVD
6673.00†	59.842	345.819	6431.56	156.23	428.20	871.96	1762807.24	14554527.37	40°04'31.803"N	80°33'44.960"W	971.42	63.845	9.00	8.58	-3.31	
6773.00†	68.485	343.026	6475.10	246.11	514.78	847.74	1762783.03	14554613.92	40°04'32.660"N	80°33'45.266"W	991.80	58.732	9.00	8.64	-2.79	
6787.58†	69.749	342.650	6480.30	259.73	527.79	843.72	1762779.01	14554626.93	40°04'32.788"N	80°33'45.317"W	995.20	57.972	9.00	8.67	-2.58	Levanua. 6480.30' TVD
6872.98†	77.167	340.551	6504.60	341.50	605.40	817.87	1762753.18	14554704.51	40°04'33.557"N	80°33'45.644"W	1017.56	53.490	9.00	8.69	-2.46	Upper Marcellus. 6504.6' TVD
6873.00†	77.169	340.550	6504.61	341.53	605.43	817.86	1762753.17	14554704.53	40°04'33.557"N	80°33'45.644"W	1017.57	53.489	9.00	8.70	0.00	

REFERENCE WELLPATH IDENTIFICATION

Operator	SOUTHWESTERN ENERGY	Slot	Slot 205H
Area	Ohio County, WV	Well	GW Rentals LLC OHI 205H
Field	Ohio	Wellbore	GW Rentals LLC OHI 205H PWB
Facility	GW Rentals LLC OHI Pad		

WELLPATH DATA (186 stations) *t* = interpolated/extrapolated station

MD [ft]	Inclination [°]	Azimuth [°]	TVD [ft]	Vert Sect [ft]	North [ft]	East [ft]	Grid East [US ft]	Grid North [US ft]	Latitude	Longitude	Closure Dist [ft]	Closure Dir [°]	DLS [°/100ft]	Build Rate [°/100ft]	Turn Rate [°/100ft]	Comments
6933.40†	82.425	339.144	6515.30	400.85	661.20	797.39	1762732.70	14554760.29	40°04'34.109"N	80°33'45.904"W	1035.87	50.334	9.00	8.70	-2.33	Top target: 6515.30' TVD
6973.00†	85.875	338.241	6519.34	440.12	697.90	783.07	1762718.39	14554796.97	40°04'34.472"N	80°33'46.086"W	1048.94	48.291	9.00	8.71	-2.28	
7027.57	90.630	337.009	6521.00†	494.40	748.33	762.31	1762697.64	14554847.38	40°04'34.972"N	80°33'46.336"W	1068.23	45.530	9.00	8.71	-2.26	Landing point
7073.00†	90.630	337.009	6520.50	539.57	790.14	744.57	1762679.90	14554889.18	40°04'35.386"N	80°33'46.576"W	1085.69	43.299	0.00	0.00	0.00	
7173.00†	90.630	337.009	6519.40	639.00	882.20	705.51	1762640.86	14554981.20	40°04'36.297"N	80°33'47.072"W	1129.61	38.650	0.00	0.00	0.00	
7273.00†	90.630	337.009	6518.30	738.43	974.25	666.46	1762601.82	14555073.21	40°04'37.209"N	80°33'47.569"W	1180.39	34.375	0.00	0.00	0.00	
7373.00†	90.630	337.009	6517.20	837.86	1066.30	627.40	1762562.78	14555165.23	40°04'38.120"N	80°33'48.065"W	1237.18	30.472	0.00	0.00	0.00	
7473.00†	90.630	337.009	6516.10	937.29	1158.35	588.35	1762523.74	14555257.24	40°04'39.032"N	80°33'48.562"W	1299.20	26.927	0.00	0.00	0.00	
7546.25†	90.630	337.009	6515.30	1010.12	1225.78	559.74	1762495.14	14555324.64	40°04'39.700"N	80°33'48.926"W	1347.53	24.543	0.00	0.00	0.00	Top target: 6515.30' TVD
7573.00†	90.630	337.009	6515.01	1036.72	1250.40	549.29	1762484.70	14555349.26	40°04'39.943"N	80°33'49.059"W	1365.73	23.715	0.00	0.00	0.00	
7673.00†	90.630	337.009	6513.91	1136.15	1342.45	510.23	1762445.66	14555441.27	40°04'40.855"N	80°33'49.555"W	1436.14	20.811	0.00	0.00	0.00	
7773.00†	90.630	337.009	6512.81	1235.58	1434.50	471.18	1762406.61	14555533.29	40°04'41.767"N	80°33'50.052"W	1509.90	18.183	0.00	0.00	0.00	
7873.00†	90.630	337.009	6511.71	1335.01	1526.55	432.12	1762367.57	14555625.30	40°04'42.678"N	80°33'50.548"W	1586.53	15.805	0.00	0.00	0.00	
7973.00†	90.630	337.009	6510.61	1434.44	1618.60	393.06	1762328.53	14555717.32	40°04'43.590"N	80°33'51.045"W	1665.65	13.650	0.00	0.00	0.00	
8073.00†	90.630	337.009	6509.51	1533.87	1710.65	354.01	1762289.49	14555809.34	40°04'44.501"N	80°33'51.542"W	1746.90	11.692	0.00	0.00	0.00	
8173.00†	90.630	337.009	6508.41	1633.30	1802.71	314.95	1762250.45	14555901.35	40°04'45.413"N	80°33'52.038"W	1830.01	9.910	0.00	0.00	0.00	
8273.00†	90.630	337.009	6507.31	1732.73	1894.76	275.89	1762211.41	14555993.37	40°04'46.324"N	80°33'52.535"W	1914.74	8.285	0.00	0.00	0.00	
8373.00†	90.630	337.009	6506.21	1832.16	1986.81	236.84	1762172.37	14556085.38	40°04'47.236"N	80°33'53.032"W	2000.87	6.798	0.00	0.00	0.00	
8473.00†	90.630	337.009	6505.12	1931.58	2078.86	197.78	1762133.33	14556177.40	40°04'48.147"N	80°33'53.528"W	2088.25	5.435	0.00	0.00	0.00	
8519.91†	90.630	337.009	6504.60	1978.22	2122.04	179.46	1762115.01	14556220.56	40°04'48.575"N	80°33'53.761"W	2129.61	4.834	0.00	0.00	0.00	Upper Marcellus: 6504.6' TVD
8573.00†	90.630	337.009	6504.02	2031.01	2170.91	158.72	1762094.28	14556269.41	40°04'49.059"N	80°33'54.025"W	2176.70	4.182	0.00	0.00	0.00	
8673.00†	90.630	337.009	6502.92	2130.44	2262.96	119.67	1762055.24	14556361.43	40°04'49.970"N	80°33'54.522"W	2266.12	3.027	0.00	0.00	0.00	
8773.00†	90.630	337.009	6501.82	2229.87	2355.01	80.61	1762016.20	14556453.44	40°04'50.882"N	80°33'55.018"W	2356.39	1.960	0.00	0.00	0.00	
8873.00†	90.630	337.009	6500.72	2329.30	2447.06	41.56	1761977.16	14556545.46	40°04'51.793"N	80°33'55.515"W	2447.42	0.973	0.00	0.00	0.00	
8973.00†	90.630	337.009	6499.62	2428.73	2539.11	2.80	1761938.12	14556637.48	40°04'52.705"N	80°33'56.012"W	2539.11	0.056	0.00	0.00	0.00	
9073.00†	90.630	337.009	6498.52	2528.16	2631.16	-36.36	1761899.08	14556729.49	40°04'53.617"N	80°33'56.508"W	2631.41	359.204	0.00	0.00	0.00	
9173.00†	90.630	337.009	6497.42	2627.59	2723.22	-75.61	1761860.04	14556821.51	40°04'54.528"N	80°33'57.005"W	2724.27	358.410	0.00	0.00	0.00	
9273.00†	90.630	337.009	6496.32	2727.02	2815.27	-114.67	1761820.99	14556913.52	40°04'55.440"N	80°33'57.502"W	2817.60	357.668	0.00	0.00	0.00	
9373.00†	90.630	337.009	6495.22	2826.45	2907.32	-153.73	1761781.95	14557005.54	40°04'56.351"N	80°33'57.998"W	2911.38	356.973	0.00	0.00	0.00	
9473.00†	90.630	337.009	6494.13	2925.88	2999.37	-192.78	1761742.91	14557097.55	40°04'57.263"N	80°33'58.495"W	3005.56	356.322	0.00	0.00	0.00	



Planned Wellpath Report

GW Rentals LLC OHI 205H PWP Rev-D.0
Page 6 of 10



REFERENCE WELLPATH IDENTIFICATION		Slot	Slot 205H
Operator	SOUTHWESTERN ENERGY	Well	GW Rentals LLC OHI 205H
Area	Ohio County, WV	Wellbore	GW Rentals LLC OHI 205H PWB
Field	Ohio		
Facility	GW Rentals LLC OHI Pad		

WELLPATH DATA (186 stations) † = interpolated/extrapolated station																
MD [ft]	Inclination [°]	Azimuth [°]	TVD [ft]	Vert Sect [ft]	North [ft]	East [ft]	Grid East [US ft]	Grid North [US ft]	Latitude	Longitude	Closure Dist [ft]	Closure Dir [°]	DLS [°/100ft]	Build Rate [°/100ft]	Turn Rate [°/100ft]	Comments
9573.00†	90.630	337.009	6493.03	3025.31	3091.42	-231.84	1761703.87	14557189.57	40°04'58.174"N	80°33'58.992"W	3100.10	355.711	0.00	0.00	0.00	0.00
9673.00†	90.630	337.009	6491.93	3124.74	3183.47	-270.90	1761664.83	14557281.58	40°04'59.086"N	80°33'59.488"W	3194.98	355.136	0.00	0.00	0.00	0.00
9773.00†	90.630	337.009	6490.83	3224.17	3275.52	-309.95	1761625.79	14557373.60	40°05'00.000"N	80°33'59.985"W	3290.15	354.594	0.00	0.00	0.00	0.00
9873.00†	90.630	337.009	6489.73	3323.60	3367.57	-349.01	1761586.75	14557465.62	40°05'00.909"N	80°34'00.482"W	3385.61	354.083	0.00	0.00	0.00	0.00
9973.00†	90.630	337.009	6488.63	3423.03	3459.62	-388.07	1761547.70	14557557.63	40°05'01.820"N	80°34'00.978"W	3481.32	353.600	0.00	0.00	0.00	0.00
10073.00†	90.630	337.009	6487.53	3522.46	3551.67	-427.12	1761508.66	14557649.65	40°05'02.732"N	80°34'01.475"W	3577.27	353.143	0.00	0.00	0.00	0.00
10173.00†	90.630	337.009	6486.43	3621.89	3643.73	-466.18	1761469.62	14557741.66	40°05'03.643"N	80°34'01.972"W	3673.43	352.709	0.00	0.00	0.00	0.00
10273.00†	90.630	337.009	6485.33	3721.31	3735.78	-505.23	1761430.58	14557833.68	40°05'04.555"N	80°34'02.469"W	3769.79	352.298	0.00	0.00	0.00	0.00
10373.00†	90.630	337.009	6484.24	3820.74	3827.83	-544.29	1761391.54	14557925.69	40°05'05.467"N	80°34'02.965"W	3866.33	351.907	0.00	0.00	0.00	0.00
10473.00†	90.630	337.009	6483.14	3920.17	3919.88	-583.35	1761352.50	14558017.71	40°05'06.378"N	80°34'03.462"W	3963.05	351.535	0.00	0.00	0.00	0.00
10573.00†	90.630	337.009	6482.04	4019.60	4011.93	-622.40	1761313.46	14558109.72	40°05'07.290"N	80°34'03.959"W	4059.92	351.182	0.00	0.00	0.00	0.00
10673.00†	90.630	337.009	6480.94	4119.03	4103.98	-661.46	1761274.41	14558201.74	40°05'08.201"N	80°34'04.456"W	4156.94	350.844	0.00	0.00	0.00	0.00
10731.11†	90.630	337.009	6480.30	4176.81	4157.47	-684.16	1761251.73	14558255.21	40°05'08.731"N	80°34'04.744"W	4213.39	350.655	0.00	0.00	0.00	0.00
10773.00†	90.630	337.009	6479.84	4218.46	4196.03	-700.52	1761233.37	14558293.76	40°05'09.113"N	80°34'04.932"W	4254.10	350.522	0.00	0.00	0.00	0.00
10873.00†	90.630	337.009	6478.74	4317.89	4288.08	-739.57	1761196.33	14558385.77	40°05'10.024"N	80°34'05.449"W	4351.39	350.214	0.00	0.00	0.00	0.00
10973.00†	90.630	337.009	6477.64	4417.32	4380.13	-778.63	1761157.29	14558477.79	40°05'10.936"N	80°34'05.946"W	4448.80	349.920	0.00	0.00	0.00	0.00
11073.00†	90.630	337.009	6476.54	4516.75	4472.18	-817.69	1761118.25	14558569.80	40°05'11.847"N	80°34'06.442"W	4546.32	349.639	0.00	0.00	0.00	0.00
11173.00†	90.630	337.009	6475.44	4616.18	4564.24	-856.74	1761079.21	14558661.82	40°05'12.759"N	80°34'06.939"W	4643.95	349.369	0.00	0.00	0.00	0.00
11273.00†	90.630	337.009	6474.34	4715.61	4656.29	-895.80	1761040.17	14558753.83	40°05'13.670"N	80°34'07.436"W	4741.67	349.110	0.00	0.00	0.00	0.00
11373.00†	90.630	337.009	6473.25	4815.04	4748.34	-934.86	1761001.12	14558845.85	40°05'14.582"N	80°34'07.933"W	4839.49	348.862	0.00	0.00	0.00	0.00
11473.00†	90.630	337.009	6472.15	4914.47	4840.39	-973.91	1760962.08	14558937.86	40°05'15.493"N	80°34'08.430"W	4937.39	348.624	0.00	0.00	0.00	0.00
11573.00†	90.630	337.009	6471.05	5013.90	4932.44	-1012.97	1760923.04	14559029.88	40°05'16.405"N	80°34'08.926"W	5035.38	348.395	0.00	0.00	0.00	0.00
11673.00†	90.630	337.009	6469.95	5113.33	5024.49	-1052.02	1760884.00	14559121.90	40°05'17.316"N	80°34'09.423"W	5133.45	348.174	0.00	0.00	0.00	0.00
11773.00†	90.630	337.009	6468.85	5212.76	5116.54	-1091.08	1760844.96	14559213.91	40°05'18.228"N	80°34'09.920"W	5231.58	347.962	0.00	0.00	0.00	0.00
11873.00†	90.630	337.009	6467.75	5312.19	5208.59	-1130.14	1760805.92	14559305.93	40°05'19.139"N	80°34'10.417"W	5329.79	347.758	0.00	0.00	0.00	0.00
11973.00†	90.630	337.009	6466.65	5411.62	5300.64	-1169.19	1760766.88	14559397.94	40°05'20.051"N	80°34'10.913"W	5428.06	347.561	0.00	0.00	0.00	0.00
12073.00†	90.630	337.009	6465.55	5511.04	5392.69	-1208.25	1760727.83	14559489.96	40°05'20.962"N	80°34'11.410"W	5526.39	347.371	0.00	0.00	0.00	0.00
12173.00†	90.630	337.009	6464.45	5610.47	5484.75	-1247.31	1760688.79	14559581.97	40°05'21.874"N	80°34'11.907"W	5624.79	347.188	0.00	0.00	0.00	0.00
12273.00†	90.630	337.009	6463.36	5709.90	5576.80	-1286.36	1760649.75	14559673.99	40°05'22.785"N	80°34'12.404"W	5723.23	347.011	0.00	0.00	0.00	0.00
12373.00†	90.630	337.009	6462.26	5809.33	5668.85	-1325.42	1760610.71	14559766.00	40°05'23.697"N	80°34'12.901"W	5821.73	346.840	0.00	0.00	0.00	0.00

REFERENCE WELLPATH IDENTIFICATION		Slot	Slot 20SH
Operator	SOUTHWESTERN ENERGY	Well	GW Rentals LLC OHI 20SH
Area	Ohio County, WV	Wellbore	GW Rentals LLC OHI 20SH PWB
Field	Ohio		
Facility	GW Rentals LLC OHI Pad		

WELLPATH DATA (186 stations) * = interpolated/extrapolated station																
MD [ft]	Inclination [°]	Azimuth [°]	TVD [ft]	Vert Sect [ft]	North [ft]	East [ft]	Grid East [US ft]	Grid North [US ft]	Latitude	Longitude	Closure Dist [ft]	Closure Dir [°]	DLS [°/100ft]	Build Rate [°/100ft]	Turn Rate [°/100ft]	Comments
12473.00†	90.630	337.009	6461.16	5908.76	5760.90	-1364.48	1760532.63	14559858.02	40°05'24.609"N	80°34'13.397"W	5920.28	346.675	0.00	0.00	0.00	
12573.00†	90.630	337.009	6460.06	6008.19	5852.95	-1403.53	1760532.63	14559950.04	40°05'25.520"N	80°34'13.894"W	6018.88	346.515	0.00	0.00	0.00	
12673.00†	90.630	337.009	6458.96	6107.62	5945.00	-1442.59	1760493.59	14560042.05	40°05'26.432"N	80°34'14.391"W	6117.52	346.360	0.00	0.00	0.00	
12773.00†	90.630	337.009	6457.86	6207.05	6037.05	-1481.65	1760454.55	14560134.07	40°05'27.343"N	80°34'14.888"W	6216.94	346.211	0.00	0.00	0.00	
12873.00†	90.630	337.009	6456.76	6306.48	6129.10	-1520.70	1760415.50	14560226.08	40°05'28.255"N	80°34'15.385"W	6314.94	346.066	0.00	0.00	0.00	
12973.00†	90.630	337.009	6455.66	6405.91	6221.15	-1559.76	1760376.46	14560318.10	40°05'29.166"N	80°34'15.881"W	6413.70	345.925	0.00	0.00	0.00	
13073.00†	90.630	337.009	6454.56	6505.34	6313.20	-1598.81	1760337.42	14560410.11	40°05'30.078"N	80°34'16.378"W	6512.51	345.789	0.00	0.00	0.00	
13173.00†	90.630	337.009	6453.46	6604.77	6405.26	-1637.87	1760298.38	14560502.13	40°05'30.989"N	80°34'16.875"W	6611.35	345.656	0.00	0.00	0.00	
13273.00†	90.630	337.009	6452.37	6704.20	6497.31	-1676.93	1760259.34	14560594.14	40°05'31.901"N	80°34'17.372"W	6710.22	345.528	0.00	0.00	0.00	
13373.00†	90.630	337.009	6451.27	6803.63	6589.36	-1715.98	1760220.30	14560686.16	40°05'32.812"N	80°34'17.869"W	6809.13	345.403	0.00	0.00	0.00	
13473.00†	90.630	337.009	6450.17	6903.06	6681.41	-1755.04	1760181.26	14560778.18	40°05'33.724"N	80°34'18.365"W	6908.07	345.282	0.00	0.00	0.00	
13573.00†	90.630	337.009	6449.07	7002.49	6773.46	-1794.10	1760142.21	14560870.19	40°05'34.635"N	80°34'18.862"W	7007.04	345.165	0.00	0.00	0.00	
13673.00†	90.630	337.009	6447.97	7101.92	6865.51	-1833.15	1760103.17	14560962.21	40°05'35.547"N	80°34'19.359"W	7106.03	345.050	0.00	0.00	0.00	
13773.00†	90.630	337.009	6446.87	7201.35	6957.56	-1872.21	1760064.13	14561054.22	40°05'36.458"N	80°34'19.856"W	7205.06	344.939	0.00	0.00	0.00	
13873.00†	90.630	337.009	6445.77	7300.77	7049.61	-1911.27	1760025.09	14561146.24	40°05'37.370"N	80°34'20.353"W	7304.11	344.831	0.00	0.00	0.00	
13973.00†	90.630	337.009	6444.67	7400.20	7141.66	-1950.32	1759986.05	14561238.25	40°05'38.281"N	80°34'20.850"W	7403.18	344.725	0.00	0.00	0.00	
14073.00†	90.630	337.009	6443.57	7499.63	7233.71	-1989.38	1759947.01	14561330.27	40°05'39.193"N	80°34'21.347"W	7502.28	344.623	0.00	0.00	0.00	
14173.00†	90.630	337.009	6442.48	7599.06	7325.77	-2028.44	1759907.97	14561422.28	40°05'40.104"N	80°34'21.843"W	7601.41	344.523	0.00	0.00	0.00	
14273.00†	90.630	337.009	6441.38	7698.49	7417.82	-2067.49	1759868.92	14561514.30	40°05'41.016"N	80°34'22.340"W	7700.55	344.426	0.00	0.00	0.00	
14373.00†	90.630	337.009	6440.28	7797.92	7509.87	-2106.55	1759829.88	14561606.32	40°05'41.927"N	80°34'22.837"W	7799.72	344.331	0.00	0.00	0.00	
14473.00†	90.630	337.009	6439.18	7897.35	7601.92	-2145.60	1759790.84	14561698.33	40°05'42.839"N	80°34'23.334"W	7898.91	344.239	0.00	0.00	0.00	
14573.00†	90.630	337.009	6438.08	7996.78	7693.97	-2184.66	1759751.80	14561790.35	40°05'43.750"N	80°34'23.831"W	7998.12	344.148	0.00	0.00	0.00	
14673.00†	90.630	337.009	6436.98	8096.21	7786.02	-2223.72	1759712.76	14561882.36	40°05'44.662"N	80°34'24.328"W	8097.35	344.060	0.00	0.00	0.00	
14773.00†	90.630	337.009	6435.88	8195.64	7878.07	-2262.77	1759673.72	14561974.38	40°05'45.573"N	80°34'24.825"W	8196.59	343.975	0.00	0.00	0.00	
14873.00†	90.630	337.009	6434.78	8295.07	7970.12	-2301.83	1759634.68	14562066.39	40°05'46.485"N	80°34'25.322"W	8295.86	343.891	0.00	0.00	0.00	
14973.00†	90.630	337.009	6433.68	8394.50	8062.17	-2340.89	1759595.63	14562158.41	40°05'47.396"N	80°34'25.818"W	8395.14	343.809	0.00	0.00	0.00	
15073.00†	90.630	337.009	6432.58	8493.93	8154.22	-2379.94	1759556.59	14562250.42	40°05'48.308"N	80°34'26.315"W	8494.44	343.729	0.00	0.00	0.00	
15173.00†	90.630	337.009	6431.49	8593.36	8246.28	-2419.00	1759517.55	14562342.44	40°05'49.219"N	80°34'26.812"W	8593.75	343.651	0.00	0.00	0.00	
15273.00†	90.630	337.009	6430.39	8692.79	8338.33	-2458.06	1759478.51	14562434.46	40°05'50.131"N	80°34'27.309"W	8693.09	343.575	0.00	0.00	0.00	
15373.00†	90.630	337.009	6429.29	8792.22	8430.38	-2497.11	1759439.47	14562526.47	40°05'51.042"N	80°34'27.806"W	8792.43	343.500	0.00	0.00	0.00	

REFERENCE WELLPATH IDENTIFICATION

Operator	SOUTHWESTERN ENERGY	Slot	Slot 205H
Area	Ohio County, WV	Well	GW Rentals LLC OHI 205H
Field	Ohio	Wellbore	GW Rentals LLC OHI 205H PWB
Facility	GW Rentals LLC OHI Pad		

WELLPATH DATA (186 stations) † = interpolated/extrapolated station

MD [ft]	Inclination [°]	Azimuth [°]	TVD [ft]	Vert Sect [ft]	North [ft]	East [ft]	Grid East [US ft]	Grid North [US ft]	Latitude	Longitude	Closure Dist [ft]	Closure Dir [°]	DLS [°/100ft]	Build Rate [°/100ft]	Turn Rate [°/100ft]	Comments
15473.00†	90.630	337.009	6428.19	8891.65	8522.43	-2536.17	1759400.43	14562618.49	40°05'51.954"N	80°34'28.303"W	8891.79	343.428	0.00	0.00	0.00	
15573.00†	90.630	337.009	6427.09	8991.08	8614.48	-2575.23	1759361.39	14562710.50	40°05'52.865"N	80°34'28.800"W	8991.17	343.356	0.00	0.00	0.00	
15673.00†	90.630	337.009	6425.99	9090.50	8706.53	-2614.28	1759322.34	14562802.52	40°05'53.777"N	80°34'29.297"W	9090.55	343.287	0.00	0.00	0.00	
15773.00†	90.630	337.009	6424.89	9189.93	8798.58	-2653.34	1759283.30	14562894.53	40°05'54.688"N	80°34'29.794"W	9189.95	343.219	0.00	0.00	0.00	
15873.00†	90.630	337.009	6423.79	9289.36	8890.63	-2692.39	1759244.26	14562986.55	40°05'55.600"N	80°34'30.291"W	9289.37	343.152	0.00	0.00	0.00	
15945.18	90.630	337.009	6423.00†	9361.14	8957.08	-2720.59	1759216.08	14563052.97	40°05'56.258"N	80°34'30.649"W	9361.14	343.105	0.00	0.00	0.00	0.00TID/PBHL

HOLE & CASING SECTIONS - Ref Wellbore: GW Rentals LLC OHI 205H PWB Ref Wellpath: GW Rentals LLC OHI 205H PWP Rev-D.0

String/Diameter	Start MD [ft]	End MD [ft]	Interval [ft]	Start TVD [ft]	End TVD [ft]	Start N/S [ft]	Start E/W [ft]	End N/S [ft]	End E/W [ft]
17.5in Open Hole	26.00	660.01	634.01	26.00	660.00	0.00	0.00	2.60	0.18
13.375in Casing Surface	26.00	660.01	634.01	26.00	660.00	0.00	0.00	2.60	0.18
12.25in Open Hole	660.01	2081.03	1421.02	660.00	2081.00	2.60	0.18	3.64	6.25
9.625in Casing Intermediate	26.00	2081.03	2055.03	26.00	2081.00	0.00	0.00	3.64	6.25
8.75in Open Hole	2081.03	6052.62	3971.59	2081.00	5935.95	3.64	6.25	96.93	872.26
8.5in Open Hole	6052.62	15945.18	9892.56	5935.95	6423.00	96.93	872.26	8957.08	-2720.59
5.5in Casing Production	26.00	15945.18	15919.18	26.00	6423.00	0.00	0.00	8957.08	-2720.59

REFERENCE WELLPATH IDENTIFICATION

Operator	SOUTHWESTERN ENERGY	Slot	Slot 205H
Area	Ohio County, WV	Well	GW Rentals LLC OHI 205H
Field	Ohio	Wellbore	GW Rentals LLC OHI 205H PWB
Facility	GW Rentals LLC OHI Pad		

TARGETS

Name	MD [ft]	TVD [ft]	North [ft]	East [ft]	Grid East [US ft]	Grid North [US ft]	Latitude	Longitude	Shape
2) GW Rentals LLC OHI 205H PBHL	15945.18	6423.00	8957.08	-2720.59	1759216.08	14563052.97	40°05'56.258"N	80°34'30.649"W	point
1) GW Rentals LLC OHI 205H LP	7027.57	6521.00	748.33	762.31	1762697.64	14554847.38	40°04'34.972"N	80°33'46.350"W	point
GW Rentals LLC OHI LL1		6750.00	0.00	0.00	1761935.62	14554099.34	40°04'27.613"N	80°33'56.203"W	polygon

SURVEY PROGRAM - Ref Wellbore: GW Rentals LLC OHI 205H PWB Ref Wellpath: GW Rentals LLC OHI 205H PWP Rev-D.0

Start MD [ft]	End MD [ft]	Positional Uncertainty Model	Log Name/Comment	Wellbore
26.00	943.66	Generic gyro - northseeking (Standard)		GW Rentals LLC OHI 205H AWB
943.66	2061.00	Navitrak (MagCorr)		GW Rentals LLC OHI 205H AWB
2061.00	5173.00	Navitrak (MagCorr)		GW Rentals LLC OHI 205H AWB
5173.00	5930.00	Navitrak (MagCorr)		GW Rentals LLC OHI 205H PWB
5930.00	15945.18	Navitrak (AT Curve Short Spaced)		GW Rentals LLC OHI 205H PWB