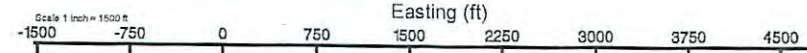


Location: Ohio County, WV
Field: Ohio
Facility: Glenn Didriksen OHI Pad 1

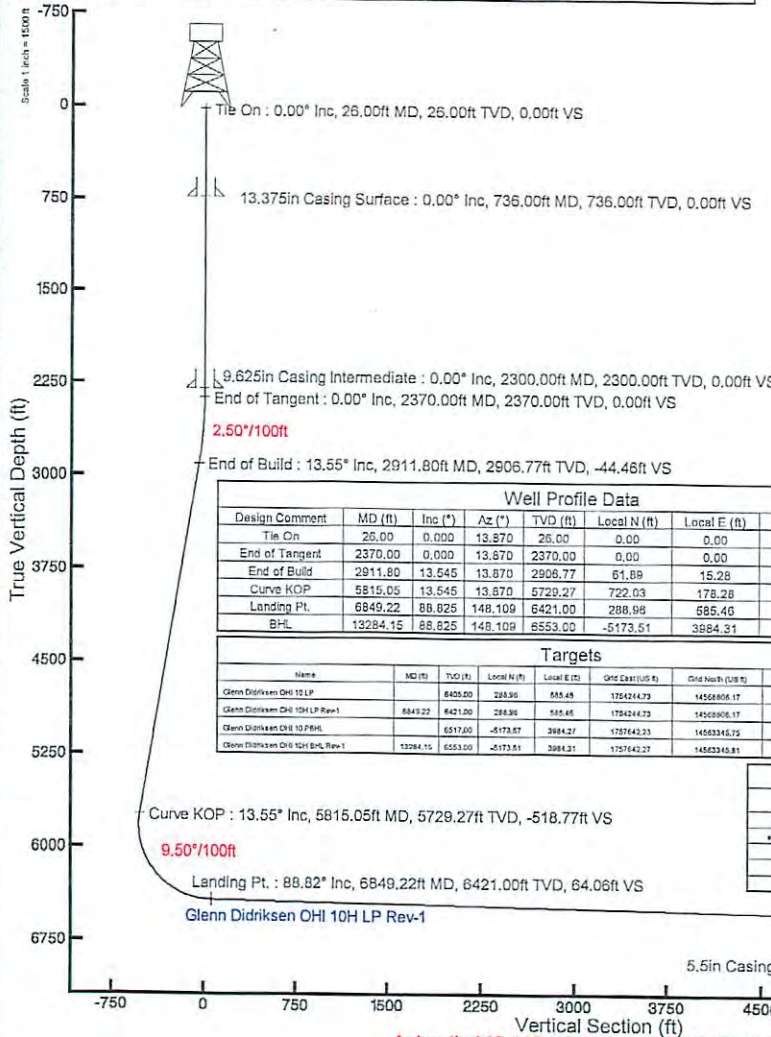
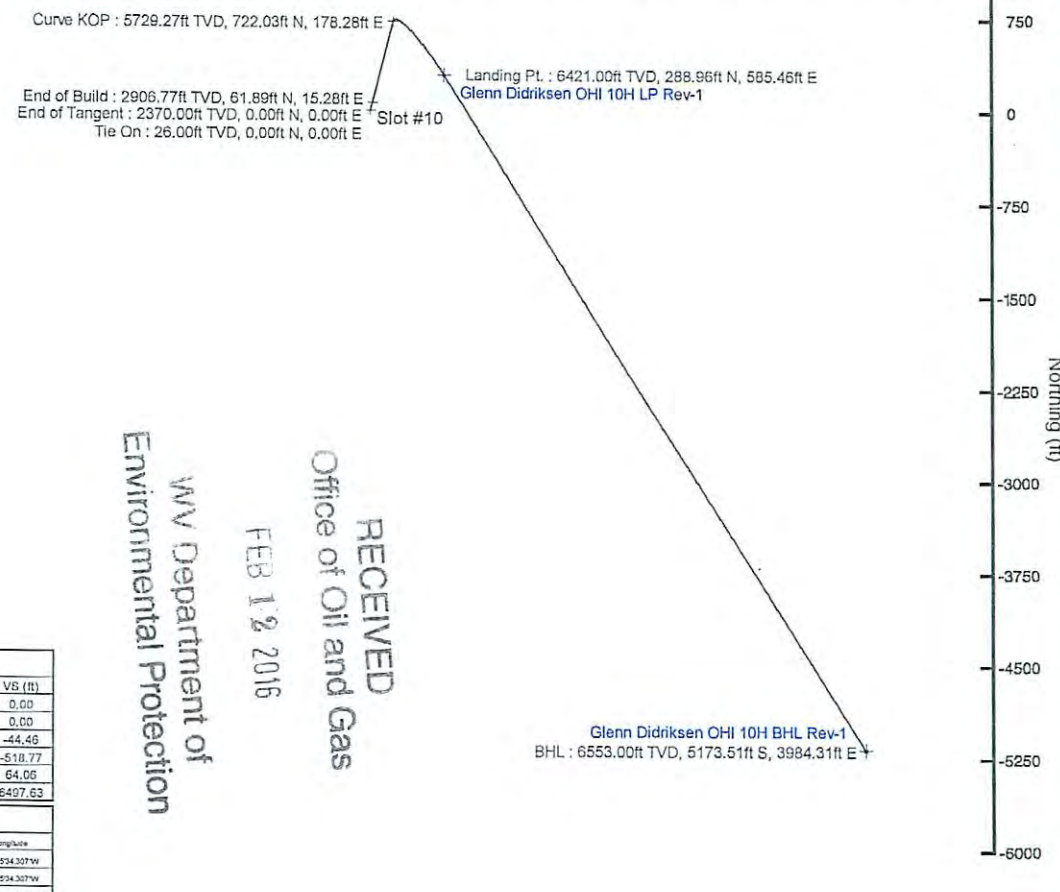
Slot: Slot #10
Well: Glenn Didriksen OHI 10H
Wellbore: Glenn Didriksen OHI 10H PWB

Plot reference wellpath is Glenn Didriksen OHI 10 PWP Rev-A.0

True vertical depths are referenced to SWN 40 (RKB)	Grid System: NAD83 / UTM Zone 17 North, US feet
Measured depths are referenced to SWN 40 (RKB)	North Reference: Grid north
SWN 40 (RKB) to Mean Sea Level: 1438 feet	Scale: True distance
Mean Sea Level to Mud line (At Slot #10): -1382 feet	Depths are in feet
Coordinates are in feet referenced to Slot	Created by: edsaryar on 11/Jun/2015



Location Information				
Facility Name	Grid East (US ft)	Grid North (US ft)	Latitude	Longitude
Glenn Didriksen OHI Pad 1	1753036.700	14568481.840	40°06'50.184"N	80°35'42.155"W
Slot	Local N (ft)	Local E (ft)	Grid East (US ft)	Grid North (US ft)
Slot #10	35.49	22.81	1753059.500	14568517.320
			Latitude	Longitude
			40°06'50.534"N	80°35'41.659"W
SWN 40 (RKB) to Mud line (At Slot: Slot #10)			26ft	
Mean Sea Level to Mud line (At Slot: Slot #10)			-1382ft	
SWN 40 (RKB) to Mean Sea Level			1408ft	

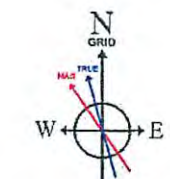


Well Profile Data								
Design Comment	MD (ft)	Inc (°)	Az (°)	TVD (ft)	Local N (ft)	Local E (ft)	DLS (°/100ft)	VS (ft)
Tie On	26.00	0.000	13.870	26.00	0.00	0.00	0.00	0.00
End of Tangent	2370.00	0.000	13.870	2370.00	0.00	0.00	0.00	0.00
End of Build	2911.80	13.545	13.870	2906.77	61.89	15.28	2.50	-44.46
Curve KOP	5815.05	13.545	13.870	5729.27	722.03	178.28	0.00	-510.77
Landing Pt.	6849.22	88.825	148.109	6421.00	288.96	585.40	9.50	64.06
BHL	13284.15	88.825	148.109	6553.00	-5173.51	3984.31	0.00	6497.63

Targets								
Name	MD (ft)	TVD (ft)	Local N (ft)	Local E (ft)	Grid East (US ft)	Grid North (US ft)	Latitude	Longitude
Glenn Didriksen OHI 10 LP	6405.00	288.96	585.46	1754244.33	14568806.17	47°06'53.3837N	80°35'54.3037W	
Glenn Didriksen OHI 10H LP Rev-1	6849.22	6421.00	288.96	585.46	1754244.33	14568806.17	47°06'53.3837N	80°35'54.3037W
Glenn Didriksen OHI 10 PWB	6517.00		-5173.51	3984.31	1757642.33	14568345.75	47°05'58.228N	80°34'50.882W
Glenn Didriksen OHI 10H BHL Rev-1	13284.15	6553.00	-5173.51	3984.31	1757642.33	14568345.81	47°05'58.228N	80°34'50.882W

Hole and Casing Sections											
Name	Start MD (ft)	End MD (ft)	Interval (ft)	Start TVD (ft)	End TVD (ft)	Start Local N (ft)	Start Local E (ft)	End Local N (ft)	End Local E (ft)	Wellbore	Wellbore
13.375in Casing Surface	26.00	736.00	710.00	26.00	736.00	0.00	0.00	0.00	0.00	Glenn Didriksen OHI 10H PWB	
9.625in Casing Intermediate	26.00	2300.00	2274.00	26.00	2300.00	0.00	0.00	0.00	0.00	Glenn Didriksen OHI 10H PWB	
8.75in Open Hole	2300.00	6800.00	4500.00	2300.00	6800.00	61.89	0.00	718.61	177.44	Glenn Didriksen OHI 10H PWB	
5.5in Open Hole	6800.00	13284.15	6484.15	6421.00	13284.15	288.96	585.40	-5173.51	3984.31	Glenn Didriksen OHI 10H PWB	
5.5in Casing Production	26.00	13284.15	13258.15	26.00	6553.00	0.00	0.00	-5173.51	3984.31	Glenn Didriksen OHI 10H PWB	

RECEIVED
 Office of Oil and Gas
 FEB 12 2016
 WV Department of
 Environmental Protection



User specified (HDCM) Dip: 67.75° Field: 53004 nT
 Magnetic North is 8.20 degrees West of True North (at 11/Jun/2015)
 Grid North is 0.26 degrees East of True North
 To correct azimuth from True to Grid subtract 0.26 degrees
 To correct azimuth from Magnetic to Grid subtract 8.46 degrees

Azimuth 148.10° with reference 0.00 N, 0.00 E



**BAKER
HUGHES**

Planned Wellpath Report

Glenn Didriksen OHI 10 PWP Rev-A.0

Page 1 of 7



REFERENCE WELLPATH IDENTIFICATION

Operator	SOUTHWESTERN ENERGY
Area	Ohio County, WV
Field	Ohio
Facility	Glenn Didriksen OHI Pad 1
Slot	Wellbore
Slot #10	Glenn Didriksen OHI 10

REPORT SETUP INFORMATION

Projection System	NAD83 / UTM Zone 17 North, US feet
North Reference	Grid
Scale	0.999615
Convergence at slot	0.26° East
Software System	WellArchitecture@ 4.0.1
User	Edsaryar
Report Generated	11/Jun/2015 at 12:30
Database/Source file	WellArchitecture\EasternDB\Glenn_Didriksen_OHI_10H_PWB.xml

WELLPATH LOCATION

Local coordinates		Grid coordinates		Geographic coordinates	
North [ft]	East [ft]	Easting [US ft]	Northing [US ft]	Latitude	Longitude
35.49	22.81	1753659.50	14568517.32	40°06'50.534"N	80°35'41.859"W
		1753636.70	14568481.84	40°06'50.184"N	80°35'42.155"W
		0.00	0.00	0°00'00.000"	85°29'19.478"W

WELLPATH DATUM

Calculation method	Minimum curvature	SWN 40 (RKB) to Facility Vertical Datum	26.00ft
Horizontal Reference Pt	Slot	SWN 40 (RKB) to Mean Sea Level	1408.00ft
Vertical Reference Pt	SWN 40 (RKB)	SWN 40 (RKB) to Mud Line at Slot (Slot #10)	26.00ft
MID Reference Pt	SWN 40 (RKB)	Section Origin	N 0.00, E 0.00 ft
Field Vertical Reference	Mean Sea Level	Section Azimuth	148.10°

WV Department of Environmental Protection

FEB 12 2016

RECEIVED
Office of Oil and Gas



BAKER HUGHES

Planned Wellpath Report

Glenn Didrikksen OHI 10 PWP Rev-A.0

Page 2 of 7

RECEIVED
Office of Oil and Gas
FEB 12 2011
WV Department of
Environmental Protection

Operator	SOUTHWESTERN ENERGY
Area	Ohio County, WV
Field	Ohio
Facility	Glenn Didrikksen OHI Pad 1
Slot	Wellbore
Slot #10	Glenn Didrikksen OHI 10
	Glenn Didrikksen OHI 10H PWB

WELLPATH DATA (139 stations) † = interpolated/extrapolated station

MD [ft]	Inclination [°]	Azimuth [°]	TVD [ft]	Vert Sect [ft]	North [ft]	East [ft]	Grid East [ft]	Grid East [ft]	Grid North [ft]	Latitude	Longitude	Closure Dist [ft]	Closure Dir [°]	DLS [°/100ft]	Build Rate [°/100ft]	Turn Rate [°/100ft]
0.00†	0.000	13.870	0.00	0.00	0.00	0.00	1753659.50	14568517.32	40°06'50.534"N	80°35'41.859"W	0.00	0.00	0.00	0.00	0.00	0.00
26.00	0.000	13.870	26.00	0.00	0.00	0.00	1753659.50	14568517.32	40°06'50.534"N	80°35'41.859"W	0.00	0.00	0.00	0.00	0.00	0.00
126.00†	0.000	13.870	126.00	0.00	0.00	0.00	1753659.50	14568517.32	40°06'50.534"N	80°35'41.859"W	0.00	0.00	0.00	0.00	0.00	0.00
226.00†	0.000	13.870	226.00	0.00	0.00	0.00	1753659.50	14568517.32	40°06'50.534"N	80°35'41.859"W	0.00	0.00	0.00	0.00	0.00	0.00
326.00†	0.000	13.870	326.00	0.00	0.00	0.00	1753659.50	14568517.32	40°06'50.534"N	80°35'41.859"W	0.00	0.00	0.00	0.00	0.00	0.00
426.00†	0.000	13.870	426.00	0.00	0.00	0.00	1753659.50	14568517.32	40°06'50.534"N	80°35'41.859"W	0.00	0.00	0.00	0.00	0.00	0.00
526.00†	0.000	13.870	526.00	0.00	0.00	0.00	1753659.50	14568517.32	40°06'50.534"N	80°35'41.859"W	0.00	0.00	0.00	0.00	0.00	0.00
626.00†	0.000	13.870	626.00	0.00	0.00	0.00	1753659.50	14568517.32	40°06'50.534"N	80°35'41.859"W	0.00	0.00	0.00	0.00	0.00	0.00
726.00†	0.000	13.870	726.00	0.00	0.00	0.00	1753659.50	14568517.32	40°06'50.534"N	80°35'41.859"W	0.00	0.00	0.00	0.00	0.00	0.00
826.00†	0.000	13.870	826.00	0.00	0.00	0.00	1753659.50	14568517.32	40°06'50.534"N	80°35'41.859"W	0.00	0.00	0.00	0.00	0.00	0.00
926.00†	0.000	13.870	926.00	0.00	0.00	0.00	1753659.50	14568517.32	40°06'50.534"N	80°35'41.859"W	0.00	0.00	0.00	0.00	0.00	0.00
1026.00†	0.000	13.870	1026.00	0.00	0.00	0.00	1753659.50	14568517.32	40°06'50.534"N	80°35'41.859"W	0.00	0.00	0.00	0.00	0.00	0.00
1126.00†	0.000	13.870	1126.00	0.00	0.00	0.00	1753659.50	14568517.32	40°06'50.534"N	80°35'41.859"W	0.00	0.00	0.00	0.00	0.00	0.00
1226.00†	0.000	13.870	1226.00	0.00	0.00	0.00	1753659.50	14568517.32	40°06'50.534"N	80°35'41.859"W	0.00	0.00	0.00	0.00	0.00	0.00
1326.00†	0.000	13.870	1326.00	0.00	0.00	0.00	1753659.50	14568517.32	40°06'50.534"N	80°35'41.859"W	0.00	0.00	0.00	0.00	0.00	0.00
1426.00†	0.000	13.870	1426.00	0.00	0.00	0.00	1753659.50	14568517.32	40°06'50.534"N	80°35'41.859"W	0.00	0.00	0.00	0.00	0.00	0.00
1526.00†	0.000	13.870	1526.00	0.00	0.00	0.00	1753659.50	14568517.32	40°06'50.534"N	80°35'41.859"W	0.00	0.00	0.00	0.00	0.00	0.00
1626.00†	0.000	13.870	1626.00	0.00	0.00	0.00	1753659.50	14568517.32	40°06'50.534"N	80°35'41.859"W	0.00	0.00	0.00	0.00	0.00	0.00
1726.00†	0.000	13.870	1726.00	0.00	0.00	0.00	1753659.50	14568517.32	40°06'50.534"N	80°35'41.859"W	0.00	0.00	0.00	0.00	0.00	0.00
1826.00†	0.000	13.870	1826.00	0.00	0.00	0.00	1753659.50	14568517.32	40°06'50.534"N	80°35'41.859"W	0.00	0.00	0.00	0.00	0.00	0.00
1926.00†	0.000	13.870	1926.00	0.00	0.00	0.00	1753659.50	14568517.32	40°06'50.534"N	80°35'41.859"W	0.00	0.00	0.00	0.00	0.00	0.00
2026.00†	0.000	13.870	2026.00	0.00	0.00	0.00	1753659.50	14568517.32	40°06'50.534"N	80°35'41.859"W	0.00	0.00	0.00	0.00	0.00	0.00
2126.00†	0.000	13.870	2126.00	0.00	0.00	0.00	1753659.50	14568517.32	40°06'50.534"N	80°35'41.859"W	0.00	0.00	0.00	0.00	0.00	0.00
2226.00†	0.000	13.870	2226.00	0.00	0.00	0.00	1753659.50	14568517.32	40°06'50.534"N	80°35'41.859"W	0.00	0.00	0.00	0.00	0.00	0.00
2326.00†	0.000	13.870	2326.00	0.00	0.00	0.00	1753659.50	14568517.32	40°06'50.534"N	80°35'41.859"W	0.00	0.00	0.00	0.00	0.00	0.00
2370.00	0.000	13.870	2370.00	0.00	0.00	0.00	1753659.50	14568517.32	40°06'50.534"N	80°35'41.859"W	0.00	0.00	0.00	0.00	0.00	0.00
2426.00†	1.400	13.870	2425.99	-0.48	0.66	0.16	1753659.66	14568517.98	40°06'50.540"N	80°35'41.857"W	0.68	5.31	13.870	2.50	0.00	0.00
2526.00†	3.900	13.870	2525.88	-3.70	5.15	1.27	1753660.77	14568522.47	40°06'50.585"N	80°35'41.842"W	5.31	14.28	13.870	2.50	0.00	0.00
2626.00†	6.400	13.870	2625.47	-9.96	13.87	3.42	1753662.92	14568531.18	40°06'50.671"N	80°35'41.814"W	14.28	27.59	13.870	2.50	0.00	0.00
2726.00†	8.900	13.870	2724.57	-19.25	26.79	6.61	1753666.11	14568544.10	40°06'50.798"N	80°35'41.772"W	27.59		13.870	2.50	0.00	0.00



RECEIVED
Office of Oil and Gas

Planned Wellpath Report

Glenn Didriksen OHI 10 PWP Rev-A.0
Page 3 of 7



FEB 12 2016

REFERENCE WELLPATH IDENTIFICATION

Operator	SOUTHWESTERN ENERGY	WV Department of	Slot	Slot #10
Area	Ohio County, WV	Environmental Protection	Well	Glenn Didriksen OHI 10
Field	Ohio		Wellbore	Glenn Didriksen OHI 10H PWB
Facility	Glenn Didriksen OHI Pad 1			

WELLPATH DATA (139 stations) † = interpolated/extrapolated station

MD [ft]	Inclination [°]	Azimuth [°]	TVD [ft]	Vert Sect [ft]	North [ft]	East [ft]	Grid East [US ft]	Grid North [US ft]	Latitude	Longitude	Closure Dist [ft]	Closure Dir [°]	DLS [°/100ft]	Build Rate [°/100ft]	Turn Rate [°/100ft]
2826.00†	11.400	13.870	2823.00	-31.54	43.90	10.84	1753670.33	14568561.20	40°06'50.967"N	80°35'41.717"W	45.22	13.870	2.50	2.50	0.00
2911.80	13.545	13.870	2906.77	-44.46	61.89	15.28	1753674.77	14568579.18	40°06'51.145"N	80°35'41.659"W	63.74	13.870	2.50	2.50	0.00
2926.00†	13.545	13.870	2920.57	-46.78	65.11	16.08	1753675.57	14568582.41	40°06'51.176"N	80°35'41.648"W	67.07	13.870	0.00	0.00	0.00
3026.00†	13.545	13.870	3017.79	-63.12	87.85	21.69	1753681.18	14568605.14	40°06'51.401"N	80°35'41.575"W	90.49	13.870	0.00	0.00	0.00
3126.00†	13.545	13.870	3115.01	-79.46	110.59	27.31	1753686.80	14568627.87	40°06'51.625"N	80°35'41.501"W	113.91	13.870	0.00	0.00	0.00
3226.00†	13.545	13.870	3212.23	-95.80	133.33	32.92	1753692.41	14568650.60	40°06'51.850"N	80°35'41.428"W	137.33	13.870	0.00	0.00	0.00
3326.00†	13.545	13.870	3309.45	-112.13	156.07	38.54	1753698.02	14568673.33	40°06'52.074"N	80°35'41.354"W	160.75	13.870	0.00	0.00	0.00
3426.00†	13.545	13.870	3406.67	-128.47	178.80	44.15	1753703.63	14568696.06	40°06'52.299"N	80°35'41.280"W	184.17	13.870	0.00	0.00	0.00
3526.00†	13.545	13.870	3503.88	-144.81	201.54	49.76	1753709.25	14568718.78	40°06'52.523"N	80°35'41.207"W	207.60	13.870	0.00	0.00	0.00
3626.00†	13.545	13.870	3601.10	-161.14	224.28	55.38	1753714.86	14568741.51	40°06'52.748"N	80°35'41.133"W	231.02	13.870	0.00	0.00	0.00
3726.00†	13.545	13.870	3698.32	-177.48	247.02	60.99	1753720.47	14568764.24	40°06'52.972"N	80°35'41.060"W	254.44	13.870	0.00	0.00	0.00
3826.00†	13.545	13.870	3795.54	-193.82	269.76	66.61	1753726.08	14568786.97	40°06'53.196"N	80°35'40.986"W	277.86	13.870	0.00	0.00	0.00
3926.00†	13.545	13.870	3892.76	-210.15	292.49	72.22	1753731.69	14568809.70	40°06'53.421"N	80°35'40.912"W	301.28	13.870	0.00	0.00	0.00
4026.00†	13.545	13.870	3989.98	-226.49	315.23	77.84	1753737.31	14568832.43	40°06'53.645"N	80°35'40.839"W	324.70	13.870	0.00	0.00	0.00
4126.00†	13.545	13.870	4087.20	-242.83	337.97	83.45	1753742.92	14568855.16	40°06'53.870"N	80°35'40.765"W	348.12	13.870	0.00	0.00	0.00
4226.00†	13.545	13.870	4184.41	-259.17	360.71	89.07	1753748.53	14568877.89	40°06'54.094"N	80°35'40.692"W	371.54	13.870	0.00	0.00	0.00
4326.00†	13.545	13.870	4281.63	-275.50	383.45	94.68	1753754.14	14568900.62	40°06'54.319"N	80°35'40.618"W	394.96	13.870	0.00	0.00	0.00
4426.00†	13.545	13.870	4378.85	-291.84	406.19	100.30	1753759.76	14568923.35	40°06'54.543"N	80°35'40.544"W	418.38	13.870	0.00	0.00	0.00
4526.00†	13.545	13.870	4476.07	-308.18	428.92	105.91	1753765.37	14568946.08	40°06'54.768"N	80°35'40.471"W	441.81	13.870	0.00	0.00	0.00
4626.00†	13.545	13.870	4573.29	-324.51	451.66	111.52	1753770.98	14568968.81	40°06'54.992"N	80°35'40.397"W	465.23	13.870	0.00	0.00	0.00
4726.00†	13.545	13.870	4670.51	-340.85	474.40	117.14	1753776.59	14568991.54	40°06'55.216"N	80°35'40.324"W	488.65	13.870	0.00	0.00	0.00
4826.00†	13.545	13.870	4767.73	-357.19	497.14	122.75	1753782.21	14569014.26	40°06'55.441"N	80°35'40.250"W	512.07	13.870	0.00	0.00	0.00
4926.00†	13.545	13.870	4864.94	-373.52	519.88	128.37	1753787.82	14569036.99	40°06'55.665"N	80°35'40.176"W	535.49	13.870	0.00	0.00	0.00
5026.00†	13.545	13.870	4962.16	-389.86	542.61	133.98	1753793.43	14569059.72	40°06'55.890"N	80°35'40.103"W	558.91	13.870	0.00	0.00	0.00
5126.00†	13.545	13.870	5059.38	-406.20	565.35	139.60	1753799.04	14569082.45	40°06'56.114"N	80°35'40.029"W	582.33	13.870	0.00	0.00	0.00
5226.00†	13.545	13.870	5156.60	-422.54	588.09	145.21	1753804.65	14569105.18	40°06'56.339"N	80°35'39.956"W	605.75	13.870	0.00	0.00	0.00
5326.00†	13.545	13.870	5253.82	-438.87	610.83	150.83	1753810.27	14569127.91	40°06'56.563"N	80°35'39.882"W	629.17	13.870	0.00	0.00	0.00
5426.00†	13.545	13.870	5351.04	-455.21	633.57	156.44	1753815.88	14569150.64	40°06'56.788"N	80°35'39.808"W	652.59	13.870	0.00	0.00	0.00
5526.00†	13.545	13.870	5448.26	-471.55	656.30	162.05	1753821.49	14569173.37	40°06'57.012"N	80°35'39.735"W	676.01	13.870	0.00	0.00	0.00
5626.00†	13.545	13.870	5545.48	-487.88	679.04	167.67	1753827.10	14569196.10	40°06'57.236"N	80°35'39.661"W	699.44	13.870	0.00	0.00	0.00



RECEIVED
Office of Oil & Gas

Planned Wellpath Report
Glenn Didriksen OHI 10 PWP Rev-A.0
Page 4 of 7



REFERENCE WELLPATH IDENTIFICATION WV Department of
SOUTHWESTERN ENERGY ENVIRONMENTAL PROTECTION

Operator	Slot	Slot #10
Area	Ohio County, WV	Glenn Didriksen OHI 10
Field	Ohio	Glenn Didriksen OHI 10H PWB
Facility	Glenn Didriksen OHI Pad 1	

WELLPATH DATA (139 stations) † = interpolated/extrapolated station

MD [ft]	Inclination [°]	Azimuth [°]	TVD [ft]	Vert Sect [ft]	North [ft]	East [ft]	Grid East [US ft]	Grid North [US ft]	Latitude	Longitude	Closure Dist [ft]	Closure Dir [°]	DLS [°/100ft]	Build Rate [°/100ft]	Turn Rate [°/100ft]
5726.00†	13.545	13.870	5642.69	-504.22	701.78	173.28	1753832.72	14569218.83	40°06'57.461"N	80°35'39.588"W	722.86	13.870	0.00	0.00	0.00
5815.05	13.545	13.870	5729.27	-518.77	722.03	178.28	1753837.71	14569239.07	40°06'57.661"N	80°35'39.522"W	743.71	13.870	0.00	0.00	0.00
5826.00†	12.849	17.256	5739.93	-520.46	724.44	178.95	1753838.38	14569241.47	40°06'57.685"N	80°35'39.513"W	746.21	13.876	9.50	-6.36	30.93
5926.00†	9.821	64.782	5838.17	-526.75	738.72	189.99	1753849.42	14569255.75	40°06'57.825"N	80°35'39.370"W	762.76	14.423	9.50	-3.03	47.53
6026.00†	14.372	106.146	5936.10	-516.51	738.90	209.67	1753869.09	14569255.94	40°06'57.826"N	80°35'39.117"W	768.08	15.842	9.50	4.55	41.36
6126.00†	22.257	123.459	6031.02	-490.01	724.98	237.46	1753896.87	14569242.02	40°06'57.687"N	80°35'38.760"W	762.88	18.136	9.50	7.89	17.31
6226.00†	31.030	131.698	6120.35	-447.97	697.33	272.58	1753931.98	14569214.38	40°06'57.412"N	80°35'38.310"W	748.71	21.350	9.50	8.77	8.24
6326.00†	40.111	136.530	6201.62	-391.56	656.71	314.08	1753973.46	14569173.78	40°06'57.009"N	80°35'37.778"W	727.96	25.560	9.50	9.08	4.83
6426.00†	49.328	139.812	6272.61	-322.31	604.24	360.82	1754020.18	14569121.33	40°06'56.489"N	80°35'37.179"W	703.78	30.844	9.50	9.22	3.28
6526.00†	58.616	142.289	6331.37	-242.14	541.36	411.52	1754070.86	14569058.47	40°06'55.865"N	80°35'36.531"W	680.02	37.241	9.50	9.29	2.48
6626.00†	67.943	144.315	6376.29	-153.23	469.79	464.78	1754124.10	14568986.93	40°06'55.155"N	80°35'35.849"W	660.85	44.693	9.50	9.33	2.03
6726.00†	77.291	146.088	6406.13	-80.03	391.49	519.15	1754178.45	14568908.66	40°06'54.379"N	80°35'35.154"W	650.22	52.980	9.50	9.35	1.77
6826.00†	86.651	147.735	6420.08	40.86	308.62	573.14	1754232.41	14568825.82	40°06'53.558"N	80°35'34.464"W	650.94	61.699	9.50	9.36	1.65
6849.22	88.825	148.109	6421.00†	64.06	288.96	585.46	1754244.73	14568806.17	40°06'53.363"N	80°35'34.307"W	652.88	63.731	9.50	9.36	1.61
6926.00†	88.825	148.109	6422.57	140.82	223.78	626.01	1754285.27	14568741.02	40°06'52.717"N	80°35'33.789"W	664.81	70.329	0.00	0.00	0.00
7026.00†	88.825	148.109	6424.63	240.80	138.89	678.83	1754338.07	14568656.16	40°06'51.876"N	80°35'33.114"W	692.89	78.436	0.00	0.00	0.00
7126.00†	88.825	148.109	6426.68	340.78	54.01	731.65	1754390.87	14568571.31	40°06'51.034"N	80°35'32.439"W	733.64	85.778	0.00	0.00	0.00
7226.00†	88.825	148.109	6428.73	440.76	-30.88	784.47	1754443.66	14568486.45	40°06'50.193"N	80°35'31.764"W	785.07	92.254	0.00	0.00	0.00
7326.00†	88.825	148.109	6430.78	540.74	-115.77	837.29	1754496.46	14568401.60	40°06'49.352"N	80°35'31.089"W	845.25	97.872	0.00	0.00	0.00
7426.00†	88.825	148.109	6432.83	640.72	-200.66	890.11	1754549.26	14568316.74	40°06'48.511"N	80°35'30.415"W	912.44	102.704	0.00	0.00	0.00
7526.00†	88.825	148.109	6434.88	740.70	-285.55	942.92	1754602.06	14568231.89	40°06'47.669"N	80°35'29.740"W	985.21	106.848	0.00	0.00	0.00
7626.00†	88.825	148.109	6436.93	840.68	-370.43	995.74	1754654.86	14568147.03	40°06'46.828"N	80°35'29.065"W	1062.41	110.406	0.00	0.00	0.00
7726.00†	88.825	148.109	6438.99	940.66	-455.32	1048.56	1754707.66	14568062.18	40°06'45.987"N	80°35'28.390"W	1143.15	113.472	0.00	0.00	0.00
7826.00†	88.825	148.109	6441.04	1040.63	-540.21	1101.38	1754760.45	14567977.32	40°06'45.146"N	80°35'27.715"W	1226.73	116.127	0.00	0.00	0.00
7926.00†	88.825	148.109	6443.09	1140.61	-625.10	1154.20	1754813.25	14567892.47	40°06'44.304"N	80°35'27.041"W	1312.60	118.459	0.00	0.00	0.00
8026.00†	88.825	148.109	6445.14	1240.59	-709.98	1207.02	1754866.05	14567807.61	40°06'43.463"N	80°35'26.366"W	1400.35	120.465	0.00	0.00	0.00
8126.00†	88.825	148.109	6447.19	1340.57	-794.87	1259.84	1754918.85	14567722.76	40°06'42.622"N	80°35'25.691"W	1489.64	122.249	0.00	0.00	0.00
8226.00†	88.825	148.109	6449.24	1440.55	-879.76	1312.66	1754971.65	14567637.90	40°06'41.780"N	80°35'25.016"W	1580.20	123.831	0.00	0.00	0.00
8326.00†	88.825	148.109	6451.29	1540.53	-964.65	1365.48	1755024.45	14567553.04	40°06'40.939"N	80°35'24.341"W	1671.85	125.240	0.00	0.00	0.00
8426.00†	88.825	148.109	6453.34	1640.51	-1049.54	1418.29	1755077.24	14567468.19	40°06'40.098"N	80°35'23.667"W	1764.39	126.501	0.00	0.00	0.00

03/04/2016



FEB 12 2016

REFERENCE WELLPATH IDENTIFICATION

Operator	SOUTHWESTERN ENERGY	WV Department of Environmental Protection	Slot	Slot #10
Area	Ohio County, WV		Well	Glenn Didriksen OHI 10
Field	Ohio		Wellbore	Glenn Didriksen OHI 10H PWB
Facility	Glenn Didriksen OHI Pad 1			

WELLPATH DATA (139 stations) † = interpolated/extrapolated station

MD [ft]	Inclination [°]	Azimuth [°]	TVD [ft]	Vert Sect [ft]	North [ft]	East [ft]	Grid East [US ft]	Grid North [US ft]	Latitude	Longitude	Closure Dist [ft]	Closure Dir [°]	DLS [°/100ft]	Build Rate [°/100ft]	Turn Rate [°/100ft]
8526.00†	88.825	148.109	6455.40	1740.49	-1134.42	1471.11	1755130.04	14567383.33	40°06'39.257"N	80°35'22.992"W	1857.71	127.637	0.00	0.00	0.00
8626.00†	88.825	148.109	6457.45	1840.47	-1219.31	1523.93	1755182.84	14567298.48	40°06'38.415"N	80°35'22.317"W	1951.69	128.664	0.00	0.00	0.00
8726.00†	88.825	148.109	6459.50	1940.44	-1304.20	1576.75	1755235.64	14567213.62	40°06'37.574"N	80°35'21.642"W	2046.24	129.596	0.00	0.00	0.00
8826.00†	88.825	148.109	6461.55	2040.42	-1389.09	1629.57	1755288.44	14567128.77	40°06'36.733"N	80°35'20.968"W	2141.28	130.445	0.00	0.00	0.00
8926.00†	88.825	148.109	6463.60	2140.40	-1473.98	1682.39	1755341.24	14567043.91	40°06'35.892"N	80°35'20.293"W	2236.75	131.222	0.00	0.00	0.00
9026.00†	88.825	148.109	6465.65	2240.38	-1558.86	1735.21	1755394.04	14566959.06	40°06'35.050"N	80°35'19.618"W	2332.60	131.936	0.00	0.00	0.00
9126.00†	88.825	148.109	6467.70	2340.36	-1643.75	1788.03	1755446.83	14566874.20	40°06'34.209"N	80°35'18.943"W	2428.78	132.593	0.00	0.00	0.00
9226.00†	88.825	148.109	6469.76	2440.34	-1728.64	1840.85	1755499.63	14566789.35	40°06'33.368"N	80°35'18.269"W	2525.25	133.200	0.00	0.00	0.00
9326.00†	88.825	148.109	6471.81	2540.32	-1813.53	1893.66	1755552.43	14566704.49	40°06'32.526"N	80°35'17.594"W	2621.99	133.762	0.00	0.00	0.00
9426.00†	88.825	148.109	6473.86	2640.30	-1898.42	1946.48	1755605.23	14566619.64	40°06'31.685"N	80°35'16.919"W	2718.97	134.284	0.00	0.00	0.00
9526.00†	88.825	148.109	6475.91	2740.28	-1983.30	1999.30	1755658.03	14566534.78	40°06'30.844"N	80°35'16.245"W	2816.15	134.770	0.00	0.00	0.00
9626.00†	88.825	148.109	6477.96	2840.26	-2068.19	2052.12	1755710.83	14566449.93	40°06'30.003"N	80°35'15.570"W	2913.52	135.223	0.00	0.00	0.00
9726.00†	88.825	148.109	6480.01	2940.23	-2153.08	2104.94	1755763.62	14566365.07	40°06'29.161"N	80°35'14.895"W	3011.07	135.648	0.00	0.00	0.00
9826.00†	88.825	148.109	6482.06	3040.21	-2237.97	2157.76	1755816.42	14566280.22	40°06'28.320"N	80°35'14.220"W	3108.77	136.045	0.00	0.00	0.00
9926.00†	88.825	148.109	6484.11	3140.19	-2322.86	2210.58	1755869.22	14566195.36	40°06'27.479"N	80°35'13.546"W	3206.60	136.419	0.00	0.00	0.00
10026.00†	88.825	148.109	6486.17	3240.17	-2407.74	2263.40	1755922.02	14566110.51	40°06'26.637"N	80°35'12.871"W	3304.57	136.770	0.00	0.00	0.00
10126.00†	88.825	148.109	6488.22	3340.15	-2492.63	2316.22	1755974.82	14566025.65	40°06'25.796"N	80°35'12.196"W	3402.66	137.101	0.00	0.00	0.00
10226.00†	88.825	148.109	6490.27	3440.13	-2577.52	2369.03	1756027.62	14565940.80	40°06'24.955"N	80°35'11.522"W	3500.85	137.413	0.00	0.00	0.00
10326.00†	88.825	148.109	6492.32	3540.11	-2662.41	2421.85	1756080.42	14565855.94	40°06'24.114"N	80°35'10.847"W	3599.14	137.709	0.00	0.00	0.00
10426.00†	88.825	148.109	6494.37	3640.09	-2747.29	2474.67	1756133.21	14565771.09	40°06'23.272"N	80°35'10.172"W	3697.52	137.989	0.00	0.00	0.00
10526.00†	88.825	148.109	6496.42	3740.07	-2832.18	2527.49	1756186.01	14565686.23	40°06'22.431"N	80°35'09.498"W	3795.98	138.254	0.00	0.00	0.00
10626.00†	88.825	148.109	6498.47	3840.04	-2917.07	2580.31	1756238.81	14565601.38	40°06'21.590"N	80°35'08.823"W	3894.52	138.505	0.00	0.00	0.00
10726.00†	88.825	148.109	6500.52	3940.02	-3001.96	2633.13	1756291.61	14565516.52	40°06'20.748"N	80°35'08.148"W	3993.13	138.745	0.00	0.00	0.00
10826.00†	88.825	148.109	6502.58	4040.00	-3086.85	2685.95	1756344.41	14565431.67	40°06'19.907"N	80°35'07.474"W	4091.81	138.973	0.00	0.00	0.00
10926.00†	88.825	148.109	6504.63	4139.98	-3171.73	2738.77	1756397.21	14565346.81	40°06'19.066"N	80°35'06.799"W	4190.55	139.190	0.00	0.00	0.00
11026.00†	88.825	148.109	6506.68	4239.96	-3256.62	2791.59	1756450.00	14565261.96	40°06'18.225"N	80°35'06.124"W	4289.35	139.397	0.00	0.00	0.00
11126.00†	88.825	148.109	6508.73	4339.94	-3341.51	2844.40	1756502.80	14565177.10	40°06'17.383"N	80°35'05.450"W	4388.20	139.594	0.00	0.00	0.00
11226.00†	88.825	148.109	6510.78	4439.92	-3426.40	2897.22	1756555.60	14565092.25	40°06'16.542"N	80°35'04.775"W	4487.10	139.783	0.00	0.00	0.00
11326.00†	88.825	148.109	6512.83	4539.90	-3511.29	2950.04	1756608.40	14565007.39	40°06'15.701"N	80°35'04.101"W	4586.05	139.964	0.00	0.00	0.00
11426.00†	88.825	148.109	6514.88	4639.88	-3596.17	3002.86	1756661.20	14564922.54	40°06'14.859"N	80°35'03.426"W	4685.04	140.138	0.00	0.00	0.00



Southwestern Energy

Operator: SOUTHWESTERN ENERGY
Area: Ohio County, WV
Field: Ohio
Facility: Glenn Ditricksen OHI Pad 1



RECEIVED
Office of Oil and Gas
Planned Wellpath Report
Glenn Ditricksen OHI 10 PWP Rev-A.0
Page 6 of 7

FEB 12 2016

Slot	Slot #10	Well	Glenn Ditricksen OHI 10	Wellbore	Glenn Ditricksen OHI 10H PWB
Operator	SOUTHWESTERN ENERGY	Area	Ohio County, WV	Field	Ohio
Facility	Glenn Ditricksen OHI Pad 1				

WELLPATH DATA (139 stations) † = interpolated/extrapolated station

MD [ft]	Inclination [°]	Azimuth [°]	TVD [ft]	Vert Sect [ft]	North [ft]	East [ft]	Grid East [US ft]	Grid North [US ft]	Latitude	Longitude	Closure Dist [ft]	Closure Dir [°]	DLS [°/100ft]	Build Rate [°/100ft]	Turn Rate [°/100ft]
11526.00†	88.825	148.109	6516.94	4739.86	-3681.06	3055.68	1756714.00	14564837.68	40°06'14.018"N	80°35'02.751"W	4784.08	140.304	0.00	0.00	0.00
11626.00†	88.825	148.109	6518.99	4839.83	-3765.95	3108.50	1756766.79	14564752.83	40°06'13.177"N	80°35'02.077"W	4883.15	140.463	0.00	0.00	0.00
11726.00†	88.825	148.109	6521.04	4939.81	-3850.84	3161.32	1756819.59	14564667.97	40°06'12.335"N	80°35'01.402"W	4982.26	140.616	0.00	0.00	0.00
11826.00†	88.825	148.109	6523.09	5039.79	-3935.73	3214.14	1756872.39	14564583.12	40°06'11.494"N	80°35'00.727"W	5081.40	140.763	0.00	0.00	0.00
11926.00†	88.825	148.109	6525.14	5139.77	-4020.61	3266.96	1756925.19	14564498.26	40°06'10.653"N	80°35'00.053"W	5180.57	140.904	0.00	0.00	0.00
12026.00†	88.825	148.109	6527.19	5239.75	-4105.50	3319.77	1756977.99	14564413.41	40°06'09.811"N	80°34'59.378"W	5279.78	141.040	0.00	0.00	0.00
12126.00†	88.825	148.109	6529.24	5339.73	-4190.39	3372.59	1757030.79	14564328.55	40°06'08.970"N	80°34'58.704"W	5379.01	141.171	0.00	0.00	0.00
12226.00†	88.825	148.109	6531.29	5439.71	-4275.28	3425.41	1757083.59	14564243.70	40°06'08.129"N	80°34'58.029"W	5478.27	141.298	0.00	0.00	0.00
12326.00†	88.825	148.109	6533.35	5539.69	-4360.16	3478.23	1757136.38	14564158.84	40°06'07.288"N	80°34'57.354"W	5577.56	141.420	0.00	0.00	0.00
12426.00†	88.825	148.109	6535.40	5639.67	-4445.05	3531.05	1757189.18	14564073.99	40°06'06.446"N	80°34'56.680"W	5676.87	141.537	0.00	0.00	0.00
12526.00†	88.825	148.109	6537.45	5739.65	-4529.94	3583.87	1757241.98	14563989.13	40°06'05.605"N	80°34'55.005"W	5776.20	141.651	0.00	0.00	0.00
12626.00†	88.825	148.109	6539.50	5839.62	-4614.83	3636.69	1757294.78	14563904.28	40°06'04.764"N	80°34'53.331"W	5875.55	141.760	0.00	0.00	0.00
12726.00†	88.825	148.109	6541.55	5939.60	-4699.72	3689.51	1757347.58	14563819.42	40°06'04.922"N	80°34'52.982"W	5974.93	141.866	0.00	0.00	0.00
12826.00†	88.825	148.109	6543.60	6039.58	-4784.60	3742.33	1757400.38	14563734.57	40°06'04.081"N	80°34'52.656"W	6074.33	141.969	0.00	0.00	0.00
12926.00†	88.825	148.109	6545.65	6139.56	-4869.49	3795.14	1757453.17	14563649.71	40°06'03.240"N	80°34'52.307"W	6173.74	142.068	0.00	0.00	0.00
13026.00†	88.825	148.109	6547.70	6239.54	-4954.38	3847.96	1757505.97	14563564.86	40°06'02.398"N	80°34'51.958"W	6273.17	142.164	0.00	0.00	0.00
13126.00†	88.825	148.109	6549.76	6339.52	-5039.27	3900.78	1757558.77	14563480.00	40°06'01.557"N	80°34'51.608"W	6372.62	142.257	0.00	0.00	0.00
13226.00†	88.825	148.109	6551.81	6439.50	-5124.16	3953.60	1757611.57	14563395.15	40°05'59.716"N	80°34'51.283"W	6472.09	142.348	0.00	0.00	0.00
13284.15	88.825	148.109	6553.00†	6497.63	-5173.51	3984.31	1757642.27	14563345.81	40°05'59.226"N	80°34'50.891"W	6529.93	142.399	0.00	0.00	0.00
13284.15	88.825	148.109	6553.00	6497.63	-5173.51	3984.31	1757642.27	14563345.81	40°05'59.226"N	80°34'50.891"W	6529.93	142.399	0.00	0.00	0.00
13284.15	88.825	148.109	6553.00	6497.63	-5173.51	3984.31	1757642.27	14563345.81	40°05'59.226"N	80°34'50.891"W	6529.93	142.399	0.00	0.00	0.00
13284.15	88.825	148.109	6553.00	6497.63	-5173.51	3984.31	1757642.27	14563345.81	40°05'59.226"N	80°34'50.891"W	6529.93	142.399	0.00	0.00	0.00
13284.15	88.825	148.109	6553.00	6497.63	-5173.51	3984.31	1757642.27	14563345.81	40°05'59.226"N	80°34'50.891"W	6529.93	142.399	0.00	0.00	0.00
13284.15	88.825	148.109	6553.00	6497.63	-5173.51	3984.31	1757642.27	14563345.81	40°05'59.226"N	80°34'50.891"W	6529.93	142.399	0.00	0.00	0.00
13284.15	88.825	148.109	6553.00	6497.63	-5173.51	3984.31	1757642.27	14563345.81	40°05'59.226"N	80°34'50.891"W	6529.93	142.399	0.00	0.00	0.00
13284.15	88.825	148.109	6553.00	6497.63	-5173.51	3984.31	1757642.27	14563345.81	40°05'59.226"N	80°34'50.891"W	6529.93	142.399	0.00	0.00	0.00
13284.15	88.825	148.109	6553.00	6497.63	-5173.51	3984.31	1757642.27	14563345.81	40°05'59.226"N	80°34'50.891"W	6529.93	142.399	0.00	0.00	0.00
13284.15	88.825	148.109	6553.00	6497.63	-5173.51	3984.31	1757642.27	14563345.81	40°05'59.226"N	80°34'50.891"W	6529.93	142.399	0.00	0.00	0.00
13284.15	88.825	148.109	6553.00	6497.63	-5173.51	3984.31	1757642.27	14563345.81	40°05'59.226"N	80°34'50.891"W	6529.93	142.399	0.00	0.00	0.00
13284.15	88.825	148.109	6553.00	6497.63	-5173.51	3984.31	1757642.27	14563345.81	40°05'59.226"N	80°34'50.891"W	6529.93	142.399	0.00	0.00	0.00
13284.15	88.825	148.109	6553.00	6497.63	-5173.51	3984.31	1757642.27	14563345.81	40°05'59.226"N	80°34'50.891"W	6529.93	142.399	0.00	0.00	0.00
13284.15	88.825	148.109	6553.00	6497.63	-5173.51	3984.31	1757642.27	14563345.81	40°05'59.226"N	80°34'50.891"W	6529.93	142.399	0.00	0.00	0.00
13284.15	88.825	148.109	6553.00	6497.63	-5173.51	3984.31	1757642.27	14563345.81	40°05'59.226"N	80°34'50.891"W	6529.93	142.399	0.00	0.00	0.00
13284.15	88.825	148.109	6553.00	6497.63	-5173.51	3984.31	1757642.27	14563345.81	40°05'59.226"N	80°34'50.891"W	6529.93	142.399	0.00	0.00	0.00
13284.15	88.825	148.109	6553.00	6497.63	-5173.51	3984.31	1757642.27	14563345.81	40°05'59.226"N	80°34'50.891"W	6529.93	142.399	0.00	0.00	0.00
13284.15	88.825	148.109	6553.00	6497.63	-5173.51	3984.31	1757642.27	14563345.81	40°05'59.226"N	80°34'50.891"W	6529.93	142.399	0.00	0.00	0.00
13284.15	88.825	148.109	6553.00	6497.63	-5173.51	3984.31	1757642.27	14563345.81	40°05'59.226"N	80°34'50.891"W	6529.93	142.399	0.00	0.00	0.00
13284.15	88.825	148.109	6553.00	6497.63	-5173.51	3984.31	1757642.27	14563345.81	40°05'59.226"N	80°34'50.891"W	6529.93	142.399	0.00	0.00	0.00
13284.15	88.825	148.109	6553.00	6497.63	-5173.51	3984.31	1757642.27	14563345.81	40°05'59.226"N	80°34'50.891"W	6529.93	142.399	0.00	0.00	0.00
13284.15	88.825	148.109	6553.00	6497.63	-5173.51	3984.31	1757642.27	14563345.81	40°05'59.226"N	80°34'50.891"W	6529.93	142.399	0.00	0.00	0.00
13284.15	88.825	148.109	6553.00	6497.63	-5173.51	3984.31	1757642.27	14563345.81	40°05'59.226"N	80°34'50.891"W	6529.93	142.399	0.00	0.00	0.00
13284.15	88.825	148.109	6553.00	6497.63	-5173.51	3984.31	1757642.27	14563345.81	40°05'59.226"N	80°34'50.891"W	6529.93	142.399	0.00	0.00	0.00
13284.15	88.825	148.109	6553.00	6497.63	-5173.51	3984.31	1757642.27	14563345.81	40°05'59.226"N	80°34'50.891"W	6529.93	142.399	0.00	0.00	0.00
13284.15	88.825	148.109	6553.00	6497.63	-5173.51	3984.31	1757642.27	14563345.81	40°05'59.226"N	80°34'50.891"W	6529.93	142.399	0.00	0.00	0.00
13284.15	88.825	148.109	6553.00	6497.63	-5173.51	3984.31	1757642.27	14563345.81	40°05'59.226"N	80°34'50.891"W	6529.93	142.399	0.00	0.00	0.00
13284.15	88.825	148.109	6553.00	6497.63	-5173.51	3984.31	1757642.27	14563345.81	40°05'59.226"N	80°34'50.891"W	6529.93	142.399	0.00	0.00	0.00
13284.15	88.825	148.109	6553.00	6497.63	-5173.51	3984.31	1757642.27	14563345.81	40°05'59.226"N	80°34'50.891"W	6529.93	142.399	0.00	0.00	0.00
13284.15	88.825	148.109	6553.00	6497.63	-5173.51	3984.31	1757642.27	14563345.81	40°05'59.226"N	80°34'50.891"W	6529.93	142.399	0.00	0.00	0.00
13284.15	88.825	148.109	6553.00	6497.63	-5173.51	3984.31	1757642.27	14563345.81	40°05'59.226"N	80°34'50.891"W	6529.93	142.399	0.00	0.00	0.00
13284.15	88.825	148.109	6553.00	6497.63	-5173.51	3984.31	1757642.27	14563345.81	40°05'59.226"N	80°34'50.891"W	6529.93	142.399	0.00	0.00	0.00
13284.15	88.825	148.109	6553.00	6497.63	-5173.51	3984.31	1757642.27	14563345.81	40°05'59.226"N	80°34'50.891"W	6529.93	142.399	0.00	0.00	0.00
13284.15	88.825	148.109	6553.00	6497.63	-5173.51	3984.31	1757642.27	14563345.81	40°05'59.226"N	80°34'50.891"W	6529.93	142.399	0.00	0.00	0.00
13284.15	88.825	148.109	6553.00	6497.63	-5173.51	3984.31	1757642.27	14563345.81	40°05'59.226"N	80°34'50.891"W	6529.93	142.399	0.00	0.00	0.00
13284.15	88.825	148.109	6553.00	6497.63	-5173.51	3984.31	1757642.27	14563345.81	40°05'59.226"N	80°34'50.891"W	6529.93	142.399	0.00	0.00	0.00
13284.15	88.825	148.109	6553.00	6497.63	-5173.51	3984.31	1757642.27	14563345.81	40°05'59.226"N	80°34'50.891"W	6529.93	142.399	0.00	0.00	0.00
13284.15	88.825	148.109	6553.00	6497.63	-5173.51	3984.31	1757642.27	14563345.81	40°05'59.226"N	80°34'50.891"W	6529.93	142.399	0		



Planned Wellpath Report

Glenn Didriksen OHI 10 PWP Rev-A.0

Page 7 of 7



REFERENCE WELLPATH IDENTIFICATION

Operator	SOUTHWESTERN ENERGY	Slot	Slot #10
Area	Ohio County, WV	Well	Glenn Didriksen OHI 10
Field	Ohio	Wellbore	Glenn Didriksen OHI 10H PWB
Facility	Glenn Didriksen OHI Pad 1		

TARGETS

Name	MD [ft]	TVD [ft]	North [ft]	East [ft]	Grid East [US ft]	Grid North [US ft]	Latitude	Longitude	Shape
Glenn Didriksen OHI 10 LP		6405.00	288.96	585.45	1754244.73	14568806.17	40°06'53.363"N	80°35'34.307"W	point
1) Glenn Didriksen OHI 10H LP Rev-1	6849.22	6421.00	288.96	585.46	1754244.73	14568806.17	40°06'53.363"N	80°35'34.307"W	point
Glenn Didriksen OHI 10 PBHL		6517.00	-5173.57	3984.27	1757642.23	14563345.75	40°05'59.226"N	80°34'50.892"W	point
2) Glenn Didriksen OHI 10H BHL Rev-1	13284.15	6553.00	-5173.51	3984.31	1757642.27	14563345.81	40°05'59.226"N	80°34'50.891"W	point

SURVEY PROGRAM - Ref Wellbore: Glenn Didriksen OHI 10H PWB Ref Wellpath: Glenn Didriksen OHI 10 PWP Rev-A.0

Start MD [ft]	End MD [ft]	Positional Uncertainty Model	Log Name/Comment	Wellbore
26.00	2300.00	Generic gyro - northseeking (Standard)		Glenn Didriksen OHI 10H PWB
2300.00	5800.00	NaviTrak (MagCorr)		Glenn Didriksen OHI 10H PWB
5800.00	13284.15	NaviTrak (MagCorr)		Glenn Didriksen OHI 10H PWB

RECEIVED
Office of Oil and Gas

FEB 12 2016

WV Department of
Environmental Protection