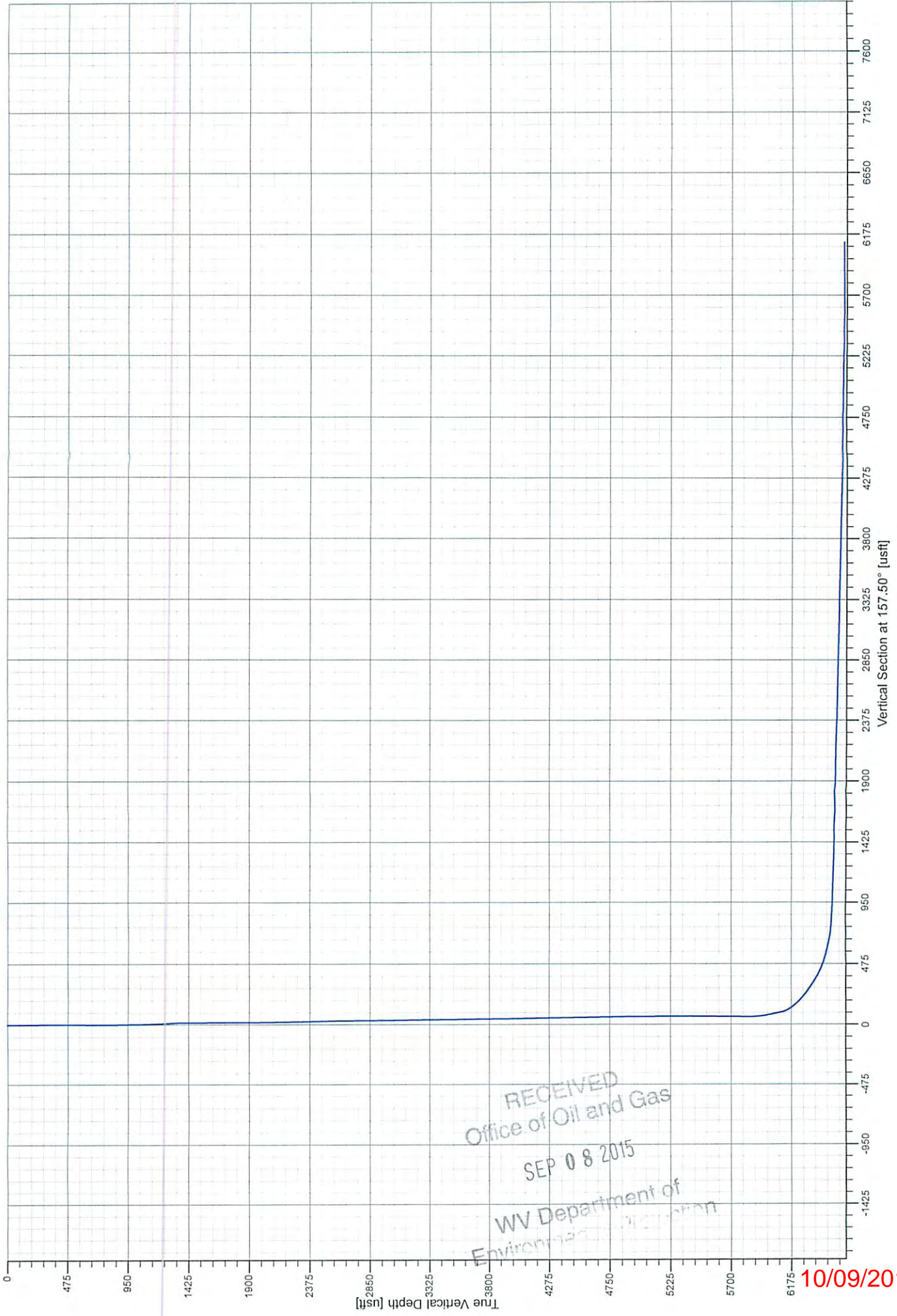


Actual: Actual (CHARLES FRYE OHI 6H/WB#1)

69-00162



RECEIVED
Office of Oil and Gas

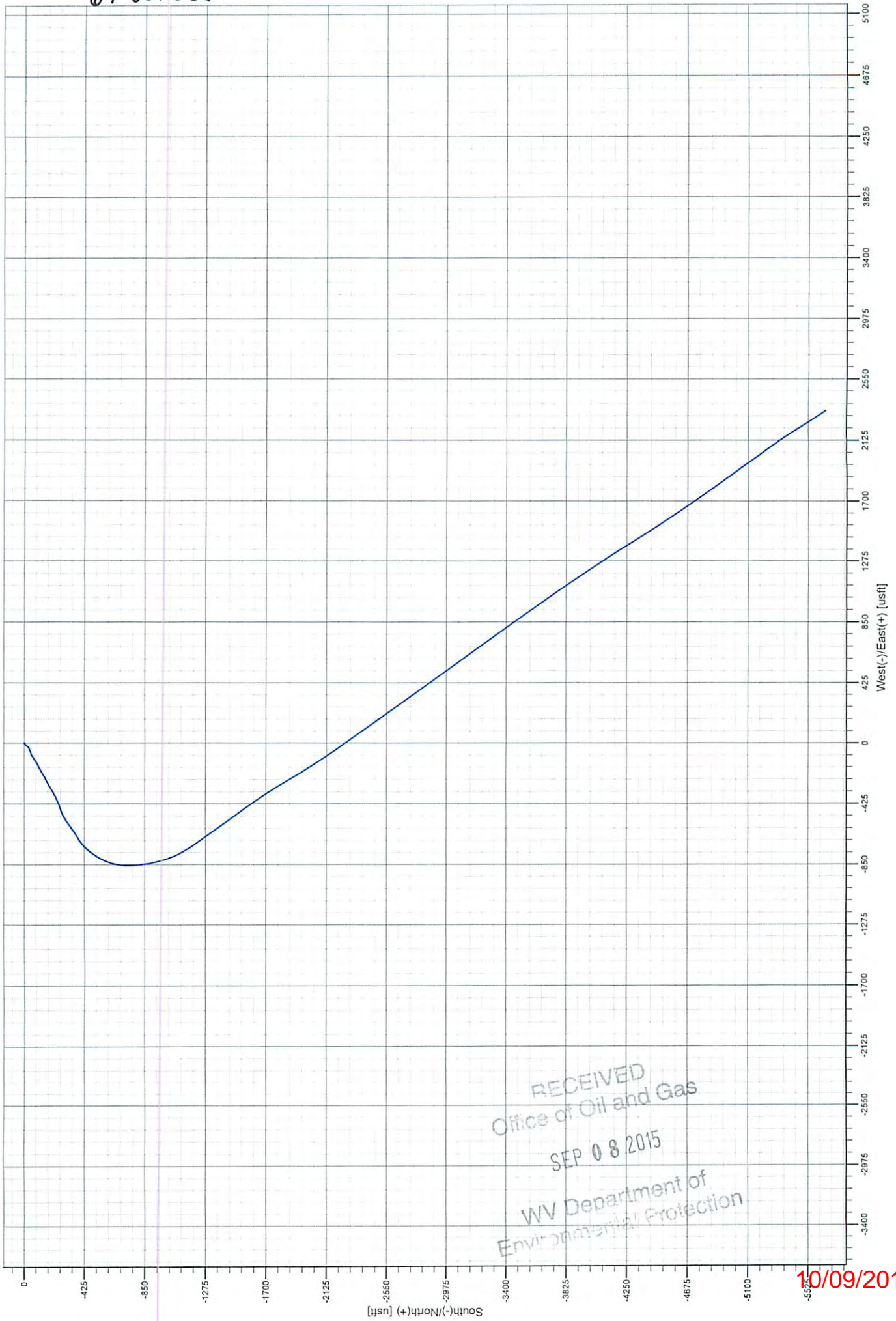
SEP 08 2015

WV Department of
Environmental Protection

10/09/2015

Actual: Actual (CHARLES FRYE OHI 6H/WB#1)

69-00162



RECEIVED
Office of Oil and Gas
SEP 08 2015
WV Department of
Environmental Protection

10/09/2015

Hydraulic Fracturing Fluid Product Component Information Disclosure

Job Start Date:	5/26/2015
Job End Date:	6/4/2015
State:	West Virginia
County:	Ohio
API Number:	47-069-00162-00-00
Operator Name:	Southwestern Energy
Well Name and Number:	OHI FRYE CHARLES 6H
Longitude:	-80.56872000
Latitude:	40.03719000
Datum:	NAD27
Federal/Tribal Well:	NO
True Vertical Depth:	6,586
Total Base Water Volume (gal):	7,933,212
Total Base Non Water Volume:	0



69-00162

Hydraulic Fracturing Fluid Composition:

Trade Name	Supplier	Purpose	Ingredients	Chemical Abstract Service Number (CAS #)	Maximum Ingredient Concentration in Additive (% by mass)**	Maximum Ingredient Concentration in HF Fluid (% by mass)**	Comments
Water	Operator	Carrier					
			Water	7732-18-5	100.00000	82.51860	
Sand, White, 40/70	Baker Hughes	Proppant					
			MSDS and Non-MSDS Ingredients Listed Below	N/A		8.26349	
Sand, White, 100 mesh	Baker Hughes	Proppant					
			MSDS and Non-MSDS Ingredients Listed Below	N/A		8.02663	
HCl, 10.1 - 15%	Baker Hughes	Acidizing					
			MSDS and Non-MSDS Ingredients Listed Below	N/A		1.03949	SmartCare Product
MaxPerm-20A, 265 gallon tote	Baker Hughes	Friction Reducer					
			MSDS and Non-MSDS Ingredients Listed Below	N/A		0.08815	SmartCare Product
Ferrotrol 300L	Baker Hughes	Iron Control					
			MSDS and Non-MSDS Ingredients Listed Below	N/A		0.00757	SmartCare Product
CI-39	Baker Hughes	Corrosion Inhibitor					
			MSDS and Non-MSDS Ingredients Listed Below	N/A		0.00221	
GBW-5	Baker Hughes	Breaker					

Environmental Department

			MSDS and Non-MSDS Ingredients Listed Below	N/A		0.00128	SmartCare Product
Ingredients shown above are subject to 29 CFR 1910.1200(i) and appear on Material Safety Data Sheets (MSDS). Ingredients shown below are Non-MSDS.							
Ingredients in Additive (s) (MSDS and non- MSDS)	Baker Hughes	See Trade Name(s) List					
			Crystalline Silica (Quartz)	14808-60-7	100.00000	16.27975	
			Water	7732-18-5	85.00000	0.93982	
			Hydrochloric Acid	7647-01-0	15.00000	0.15582	
			1-Propanesulfonic acid, 2- methyl-2-[(1-oxo-2-propen-1-yl) amino]-, polymer with 2- propenamide, sodium salt	83446-68-8	60.00000	0.05285	
			Hydrotreated Light Distillate	64742-47-8	30.00000	0.02643	
			Citric Acid	77-92-9	60.00000	0.00454	
			Polyoxyethylene sorbitan monooleate	9005-65-6	5.00000	0.00440	
			Sorbitan, mono-(9Z)-9- octadecenoate	1338-43-8	5.00000	0.00440	
			Oxyalkylated alcohol	78330-21-9	5.00000	0.00440	
			Sodium Chloride	7647-14-5	5.00000	0.00440	
			Ammonium Persulphate	7727-54-0	100.00000	0.00128	
			Oxyalkylated Fatty Acid	61791-002	40.00000	0.00088	
			Aldehyde	104-55-2	30.00000	0.00066	
			Formic Acid	64-18-6	30.00000	0.00066	
			Tar Bases, Quinoline Derivs., Benzyl Chloride-Quaternized	72480-70-7	30.00000	0.00066	
			Isopropanol	67-63-0	5.00000	0.00011	
			Quaternary Ammonium Compound	100765-57-9	5.00000	0.00011	
			Sulfurized polyolefin	68037-13-8	5.00000	0.00011	
			Potassium Iodide	7681-11-0	2.00000	0.00004	
			Polyaklylene	7756-94-7	1.00000	0.00002	
			Potassium Acetate	127-08-2	0.50000	0.00001	

* Total Water Volume sources may include fresh water, produced water, and/or recycled water

** Information is based on the maximum potential for concentration and thus the total may be over 100%

Note: For Field Development Products (products that begin with FDP), MSDS level only information has been provided.

Ingredient information for chemicals subject to 29 CFR 1910.1200(i) and Appendix D are obtained from suppliers Material Safety Data Sheets (MSDS)

69.00163

69.00162



Field:	
Map Units:	usFt
Vertical Reference Datum (VRD):	Mean Sea Level
Projected Coordinate System:	Zone 17N (84 W to 78 W)

Section:		
Company Name:	Southwestern Energy Company	
Units:	Feet	
TVD Reference:	Rotary Table	
Position:		
	Northing:	14,546,367.140
	Easting:	1,758,769.009
North Reference:		
	Grid	Grid Cor
Comment :		

Slot:			
Position (Relative to SW Corner Of Section)			
N/S	0	Northing:	14,546,367.140
E/W	0	Easting:	1,758,769.009
Ground Level Elevation (usft):		Ground Level:	
Comment :			

Well:		
Type:	Main well	
KB Elevation	RKB @ 1294.00usft (SDC 40)	
Closure Distance:	6113.11	Closure Azimut
Comment:		

Vertical Section:		
Position of Origin (Relative to Slot centre)	N/S	0
Vertical Section Azimuth:	157.50	

RECEIVED
 Office of Oil and Gas
 SEP 08 2015
 WV Department of
 Environmental Protection

10/09/2015

69-00162

Survey

Name	Definitive Survey	Company	SWN
------	-------------------	---------	-----

Magnetic Parameters:

Model:	BGGM2014	Field Strength:	52,524	Declination:	-8.76	Dip:	
--------	----------	-----------------	--------	--------------	-------	------	--

Survey Tool Ranges:

Survey Tool	Start MD (ft)	End MD (ft)
MS-SRG-WLINE	100.00	2243.00
MWD	2373.00	5620.00
MWD	5671.00	5996.00
MWD	6042.00	12628.00

Survey Points: (Relative to Slot Centre, TVD Relative to Slot TVD Reference)

MD (Ft)	Inc	Az	TVD (Ft)	+N/-S (Ft)	+E/-W (Ft)	V Sec (Ft)
0.00	0.00	0.00	0.00	0.00	0.00	0.00
100.00	0.23	103.54	100.00	-0.05	0.20	0.12
200.00	0.32	128.50	200.00	-0.27	0.61	0.48
300.00	0.30	116.96	300.00	-0.56	1.06	0.92
400.00	0.23	87.18	400.00	-0.67	1.49	1.19
500.00	0.22	58.41	500.00	-0.56	1.86	1.23
600.00	0.24	293.87	599.99	-0.37	1.83	1.05
700.00	0.21	97.58	699.99	-0.31	1.82	0.99
800.00	0.38	2.33	799.99	-0.01	2.02	0.78
900.00	2.15	223.18	899.97	-1.04	0.75	1.25
1000.00	3.91	233.68	999.83	-4.43	-3.29	2.84
1100.00	5.25	234.80	1099.51	-9.09	-9.77	4.66
1200.00	6.96	220.47	1198.94	-16.33	-17.44	8.41
1300.00	6.44	214.51	1298.26	-25.56	-24.55	14.22
1400.00	5.25	233.69	1397.75	-32.90	-31.42	18.37
1500.00	4.94	258.12	1497.36	-36.49	-39.32	18.67
1600.00	5.96	247.43	1596.91	-39.37	-48.33	17.88
1700.00	6.36	246.49	1696.34	-43.57	-58.20	17.98
1800.00	5.99	246.35	1795.76	-47.88	-68.06	18.18
1900.00	6.44	249.35	1895.17	-51.95	-78.09	18.11
2000.00	6.27	237.44	1994.56	-56.86	-87.94	18.88
2100.00	5.64	236.63	2094.02	-62.51	-96.64	20.76
2200.00	5.25	237.66	2193.57	-67.66	-104.61	22.47
2243.00	5.42	241.44	2236.38	-69.68	-108.06	23.02
2373.00	4.58	233.61	2365.89	-75.69	-117.63	24.91
2466.00	7.32	233.38	2458.38	-81.43	-125.83	27.25
2559.00	6.66	230.87	2550.69	-88.57	-134.31	30.24
2651.00	6.86	247.48	2642.05	-93.84	-148.53	31.77
2744.00	6.60	240.75	2734.41	-98.58	-153.32	32.40

RECEIVED
 Office of Oil and Gas
 SEP 08 2015
 WV Department of Environmental Protection

10/09/2015

69-00162

2837.00	5.62	240.90	2826.89	-103.41	-161.96	33.55
2904.00	6.01	246.41	2893.54	-106.40	-168.04	33.99
2930.00	6.17	248.36	2919.39	-107.46	-170.59	33.99
3023.00	6.05	233.11	3011.87	-112.25	-179.16	35.14
3115.00	6.20	241.04	3103.35	-117.56	-187.38	36.90
3208.00	5.82	238.06	3195.84	-122.49	-195.77	38.24
3301.00	5.87	246.02	3288.36	-126.92	-204.12	39.13
3394.00	6.09	239.24	3380.85	-131.37	-212.71	39.97
3487.00	5.83	237.44	3473.35	-136.44	-220.93	41.50
3579.00	6.14	237.66	3564.85	-141.59	-229.02	43.16
3672.00	7.37	236.23	3657.20	-147.56	-238.18	45.17
3765.00	7.26	246.37	3749.45	-153.23	-248.52	46.45
3858.00	7.22	245.81	3841.70	-157.98	-259.24	46.74
3950.00	6.23	241.10	3933.07	-162.77	-268.88	47.47
4043.00	5.84	236.02	4025.56	-167.85	-277.22	48.97
4136.00	6.36	243.78	4118.03	-172.77	-285.77	50.25
4228.00	6.25	237.54	4209.48	-177.71	-294.57	51.44
4321.00	7.01	241.29	4301.85	-183.15	-303.82	52.93
4414.00	6.65	240.03	4394.19	-188.57	-313.46	54.25
4507.00	6.45	238.43	4486.59	-193.99	-322.57	55.77
4600.00	6.54	233.12	4578.99	-199.91	-331.26	57.91
4692.00	5.36	236.59	4670.49	-205.42	-339.04	60.02
4785.00	5.54	247.98	4763.08	-209.49	-346.83	60.81
4878.00	5.57	241.39	4855.64	-213.34	-354.95	61.25
4971.00	5.34	241.09	4948.22	-217.59	-362.70	62.21
5064.00	5.41	235.57	5040.81	-222.16	-370.10	63.60
5156.00	5.03	250.34	5132.43	-225.97	-377.48	64.30
5249.00	5.57	247.84	5225.03	-229.04	-385.50	64.07
5342.00	5.50	239.51	5317.60	-233.01	-393.52	64.66
5435.00	5.23	244.39	5410.20	-237.10	-401.18	65.51
5528.00	5.51	247.85	5502.79	-240.62	-409.14	65.71
5620.00	6.12	252.55	5594.31	-243.75	-417.91	65.25
5671.00	6.77	249.07	5644.99	-245.64	-423.31	64.93
5717.00	9.41	247.91	5690.53	-248.02	-429.33	64.83
5764.00	15.04	249.70	5736.45	-251.59	-438.62	64.57
5810.00	20.93	249.64	5780.18	-256.52	-451.93	64.03
5857.00	24.80	250.73	5823.48	-262.70	-469.11	63.16
5903.00	27.17	248.19	5864.83	-269.78	-487.97	62.49
5950.00	30.69	239.93	5905.97	-279.79	-508.33	63.94
5996.00	37.46	238.34	5944.05	-293.03	-530.42	67.72
6042.00	41.50	235.21	5979.55	-309.07	-554.86	73.19
6089.00	42.03	234.74	6014.61	-327.04	-580.09	79.98
6135.00	47.75	234.54	6047.19	-345.82	-606.96	87.20
6182.00	51.18	238.23	6077.73	-365.57	-638.70	94.05

RECEIVED
Office of Oil and Gas
SEP 08 2015

WV Department of
Environmental Protection

10/09/2015

69-00162

6228.00	54.08	238.16	6105.65	-384.83	-667.77	99.96
6274.00	55.66	231.38	6132.14	-406.53	-698.46	108.27
6321.00	56.98	224.42	6158.23	-432.74	-727.43	121.39
6367.00	57.68	219.75	6183.07	-461.47	-753.37	138.00
6414.00	58.21	215.63	6208.02	-492.98	-777.71	157.80
6460.00	58.12	210.23	6232.29	-525.76	-798.95	179.96
6506.00	58.30	205.20	6256.54	-560.36	-817.12	204.97
6553.00	58.48	200.12	6281.19	-597.28	-832.53	233.18
6599.00	59.18	194.17	6305.01	-634.86	-844.12	263.47
6646.00	59.71	189.12	6328.91	-674.49	-852.28	296.95
6692.00	59.79	183.74	6352.10	-713.95	-856.73	331.71
6739.00	61.38	177.78	6375.20	-754.86	-857.25	369.30
6785.00	65.07	173.67	6395.92	-795.79	-854.17	408.30
6831.00	67.53	172.07	6414.41	-837.58	-848.94	448.91
6878.00	70.08	170.55	6431.41	-880.89	-842.31	491.46
6924.00	72.46	167.47	6446.18	-923.65	-834.00	534.14
6971.00	75.27	164.38	6459.24	-967.43	-823.01	578.79
7017.00	77.56	161.42	6470.05	-1010.15	-809.86	623.30
7063.00	80.37	157.18	6478.86	-1052.37	-793.90	668.41
7110.00	81.60	151.44	6486.23	-1094.18	-773.79	714.73
7156.00	83.27	148.83	6492.28	-1133.72	-751.08	759.95
7203.00	86.09	147.01	6496.64	-1173.37	-726.23	806.09
7295.00	87.41	144.71	6501.86	-1249.38	-674.68	896.05
7388.00	90.22	144.58	6503.78	-1325.21	-620.89	986.69
7481.00	88.99	144.39	6504.42	-1400.90	-566.86	1077.30
7574.00	88.29	143.37	6506.63	-1476.00	-512.06	1167.65
7667.00	88.20	144.60	6509.48	-1551.19	-457.40	1258.03
7760.00	88.20	145.79	6512.40	-1627.51	-404.35	1348.85
7852.00	88.37	146.12	6515.15	-1703.71	-352.86	1438.95
7945.00	89.69	150.07	6516.73	-1782.63	-303.73	1530.67
8038.00	89.96	150.20	6517.01	-1863.28	-257.42	1622.90
8131.00	89.87	148.53	6517.15	-1943.30	-210.03	1714.96
8224.00	88.20	146.28	6518.71	-2021.63	-159.95	1806.50
8316.00	87.67	146.59	6522.03	-2098.24	-109.11	1896.73
8409.00	90.40	145.53	6523.60	-2175.38	-57.20	1987.86
8502.00	89.08	144.55	6524.02	-2251.59	-3.92	2078.67
8595.00	89.34	144.70	6525.30	-2327.42	49.92	2169.32
8687.00	88.72	145.31	6526.86	-2402.77	102.67	2259.13
8780.00	87.41	144.81	6530.00	-2478.96	155.90	2349.89
8873.00	87.93	145.13	6533.78	-2555.05	209.41	2440.60
8966.00	88.02	144.39	6537.07	-2630.96	262.87	2531.26
9059.00	90.31	144.68	6538.42	-2706.69	316.82	2621.87
9151.00	88.99	143.61	6538.98	-2781.26	370.70	2711.38
9244.00	89.43	144.50	6540.26	-2856.54	425.29	2801.82

RECEIVED
 Office of Oil and Gas
 SEP 08 2015
 WV Department of
 Environmental Protection

10/09/2015

69.00162

9337.00	88.99	144.36	6541.55	-2932.18	479.38	2892.41
9430.00	88.55	144.43	6543.54	-3007.77	533.51	2982.96
9523.00	88.81	144.61	6545.69	-3083.49	587.48	3073.56
9615.00	89.43	145.11	6547.10	-3158.71	640.43	3163.32
9708.00	89.16	145.46	6548.24	-3235.15	693.38	3254.21
9801.00	88.11	144.77	6550.46	-3311.41	746.56	3345.02
9894.00	88.72	144.50	6553.03	-3387.22	800.36	3435.65
9986.00	88.90	144.88	6554.94	-3462.28	853.53	3525.34
10079.00	88.46	145.24	6557.08	-3538.50	906.78	3616.14
10172.00	89.16	145.37	6559.02	-3614.95	959.70	3707.02
10265.00	89.34	145.41	6560.23	-3691.48	1012.52	3797.94
10357.00	89.08	145.74	6561.50	-3767.36	1064.52	3887.95
10450.00	88.72	146.06	6563.29	-3844.36	1116.65	3979.03
10543.00	89.25	145.89	6564.93	-3921.42	1168.68	4070.14
10636.00	88.55	145.79	6566.72	-3998.36	1220.89	4161.21
10729.00	88.99	146.70	6568.72	-4075.67	1272.56	4252.40
10821.00	87.93	146.79	6571.19	-4152.57	1322.99	4342.75
10914.00	87.85	147.71	6574.61	-4230.73	1373.26	4434.20
11007.00	88.72	147.47	6577.40	-4309.21	1423.09	4525.77
11100.00	89.96	147.81	6578.47	-4387.76	1472.86	4617.39
11192.00	89.60	145.79	6578.82	-4464.74	1523.23	4707.79
11285.00	89.08	146.06	6579.89	-4541.77	1575.33	4798.89
11378.00	89.16	145.45	6581.32	-4618.64	1627.66	4889.93
11471.00	89.87	145.79	6582.11	-4695.39	1680.17	4980.94
11564.00	89.43	144.62	6582.67	-4771.75	1733.24	5071.80
11656.00	89.08	144.08	6583.87	-4846.51	1786.86	5161.38
11749.00	89.52	144.99	6585.01	-4922.25	1840.81	5252.00
11842.00	89.78	143.88	6585.58	-4997.89	1894.90	5342.59
11935.00	89.16	145.27	6586.44	-5073.67	1948.80	5433.23
12027.00	89.78	144.18	6587.29	-5148.78	2001.93	5522.95
12120.00	89.60	144.78	6587.79	-5224.47	2055.96	5613.56
12213.00	89.60	144.99	6588.44	-5300.54	2109.46	5704.31
12306.00	91.80	148.52	6587.30	-5378.30	2160.43	5795.65
12399.00	90.66	147.93	6585.31	-5457.34	2209.39	5887.42
12491.00	89.43	148.20	6585.23	-5535.41	2258.05	5978.17
12577.00	90.04	147.24	6585.63	-5608.12	2303.88	6062.92
12628.00	90.04	147.24	6585.60	-5651.01	2331.57	6113.10

Wellpath created using minimum curvature

RECEIVED
Office of Oil and Gas
SEP 08 2015
New York Department of
Environmental Protection

10/09/2015

69-00162

CHARLES FRYE OHI 6H

Ohio Co. WV

PANHANDLE (CHARLES FRYE)

Latitude:	40.0531456600
Longitude:	-80.5770625600

vergence: 0.27

CHARLES FRYE OHI 6H

Latitude:	40.0531456600
Longitude:	-80.5770625600

CHARLES FRYE OHI 6H

Rig Height (Drill Floor): 26

h: 157.579

0.00	E/W	0.00
------	-----	------

RECEIVED
Office of Oil and Gas

SEP 08 2015

WV Department of
Environmental Protection

10/09/2015

69-00162

67.37 | Date: | 2/22/2015

Source Survey

Gyro /MS Survey/SDC40 (W
 MWD/SLB/SDC40/spudder (V
 MWD/SLB/SDC 40 Reentry (V
 MWD/SLB/SDC40/Reentry/DMA

DLS (deg/ 100ft)	Build Rate (deg/ 100ft)	Turn Rate (deg/ 100ft)	
0.00	0.00	0.00	
0.23	0.23	0.00	Gyro
0.15	0.09	24.96	Gyro
0.07	-0.02	-11.54	Gyro
0.15	-0.07	-29.78	Gyro
0.11	-0.01	-28.77	Gyro
0.41	0.02	-124.54	Gyro
0.45	-0.03	163.71	Gyro
0.45	0.17	-95.25	Gyro
2.45	1.77	-139.15	Gyro
1.84	1.76	10.50	Gyro
1.34	1.34	1.12	Gyro
2.28	1.71	-14.33	Gyro
0.87	-0.52	-5.96	Gyro
2.27	-1.19	19.18	Gyro
2.17	-0.31	24.43	Gyro
1.44	1.02	-10.69	Gyro
0.41	0.40	-0.94	Gyro
0.37	-0.37	-0.14	Gyro
0.55	0.45	3.00	Gyro
1.33	-0.17	-11.91	Gyro
0.64	-0.63	-0.81	Gyro
0.40	-0.39	1.03	Gyro
0.91	0.40	8.79	Gyro
0.83	-0.65	-6.02	MWD,
2.95	2.95	-0.25	MWD,
0.78	-0.71	-2.70	MWD,
2.13	0.22	18.05	MWD,
0.89	-0.28	-7.24	MWD,

RECEIVED
 Office of Oil and Gas
 SEP 08 2015
 WV Department of
 Environmental Protection
 10/09/2015

69-00162

1.05	-1.05	0.16	MWD,
1.01	0.58	8.23	MWD,
1.01	0.63	7.49	MWD,
1.74	-0.13	-16.40	MWD,
0.93	0.16	8.62	MWD,
0.53	-0.41	-3.20	MWD,
0.87	0.05	8.56	MWD,
0.79	0.24	-7.29	MWD,
0.34	-0.28	-1.94	MWD,
0.34	0.34	0.24	MWD,
1.33	1.32	-1.54	MWD,
1.39	-0.12	10.90	MWD,
0.09	-0.04	-0.60	MWD,
1.23	-1.08	-5.12	MWD,
0.71	-0.42	-5.46	MWD,
1.05	0.56	8.34	MWD,
0.75	-0.12	-6.78	MWD,
0.94	0.82	4.03	MWD,
0.42	-0.39	-1.35	MWD,
0.29	-0.22	-1.72	MWD,
0.65	0.10	-5.71	MWD,
1.34	-1.28	3.77	MWD,
1.18	0.19	12.25	MWD,
0.69	0.03	-7.09	MWD,
0.25	-0.25	-0.32	MWD,
0.56	0.08	-5.94	MWD,
1.51	-0.41	16.05	MWD,
0.63	0.58	-2.69	MWD,
0.87	-0.08	-8.96	MWD,
0.57	-0.29	5.25	MWD,
0.46	0.30	3.72	MWD,
0.84	0.66	5.11	MWD,
1.49	1.27	-6.82	MWD,
5.75	5.74	-2.52	MWD,
12.00	11.98	3.81	MWD,
12.80	12.80	-0.13	MWD,
8.28	8.23	2.32	MWD,
5.69	5.15	-5.52	MWD,
11.31	7.49	-17.57	MWD,
14.84	14.72	-3.46	MWD,
9.79	8.78	-6.80	MWD/SLI
1.31	1.13	-1.00	MWD/SLI
12.44	12.43	-0.43	MWD/SLI
9.42	7.30	7.85	MWD/SLI

RECEIVED
Office of Oil and Gas
SEP 8 2015

NY Department of
Environmental Protection 10/09/2015

69-00162

6.31	6.30	-0.15	MWD/SLI
12.53	3.43	-14.74	MWD/SLI
12.64	2.81	-14.81	MWD/SLI
8.68	1.52	-10.15	MWD/SLI
7.51	1.13	-8.77	MWD/SLI
9.97	-0.20	-11.74	MWD/SLI
9.30	0.39	-10.93	MWD/SLI
9.21	0.38	-10.81	MWD/SLI
11.17	1.52	-12.93	MWD/SLI
9.32	1.13	-10.74	MWD/SLI
10.10	0.17	-11.70	MWD/SLI
11.55	3.38	-12.68	MWD/SLI
11.31	8.02	-8.93	MWD/SLI
6.22	5.35	-3.48	MWD/SLI
6.21	5.43	-3.23	MWD/SLI
8.18	5.17	-6.70	MWD/SLI
8.70	5.98	-6.57	MWD/SLI
7.99	4.98	-6.43	MWD/SLI
10.92	6.11	-9.22	MWD/SLI
12.34	2.62	-12.21	MWD/SLI
6.69	3.63	-5.67	MWD/SLI
7.13	6.00	-3.87	MWD/SLI
2.88	1.43	-2.50	MWD/SLI
3.02	3.02	-0.14	MWD/SLI
1.34	-1.32	-0.20	MWD/SLI
1.33	-0.75	-1.10	MWD/SLI
1.33	-0.10	1.32	MWD/SLI
1.28	0.00	1.28	MWD/SLI
0.40	0.18	0.36	MWD/SLI
4.48	1.42	4.25	MWD/SLI
0.32	0.29	0.14	MWD/SLI
1.80	-0.10	-1.80	MWD/SLI
3.01	-1.80	-2.42	MWD/SLI
0.67	-0.58	0.34	MWD/SLI
3.15	2.94	-1.14	MWD/SLI
1.77	-1.42	-1.05	MWD/SLI
0.32	0.28	0.16	MWD/SLI
0.95	-0.67	0.66	MWD/SLI
1.51	-1.41	-0.54	MWD/SLI
0.66	0.56	0.34	MWD/SLI
0.80	0.10	-0.80	MWD/SLI
2.48	2.46	0.31	MWD/SLI
1.85	-1.43	-1.16	MWD/SLI
1.07	0.47	0.96	MWD/SLI

RECEIVED
Office of Oil and Gas
SEP 08 2015
WV Department of
Environmental Protection
10/09/2015

69-00162

0.50	-0.47	-0.15	MWD/SLI
0.48	-0.47	0.08	MWD/SLI
0.34	0.28	0.19	MWD/SLI
0.87	0.67	0.54	MWD/SLI
0.48	-0.29	0.38	MWD/SLI
1.35	-1.13	-0.74	MWD/SLI
0.72	0.66	-0.29	MWD/SLI
0.46	0.20	0.41	MWD/SLI
0.61	-0.47	0.39	MWD/SLI
0.77	0.75	0.14	MWD/SLI
0.20	0.19	0.04	MWD/SLI
0.46	-0.28	0.36	MWD/SLI
0.52	-0.39	0.34	MWD/SLI
0.60	0.57	-0.18	MWD/SLI
0.76	-0.75	-0.11	MWD/SLI
1.09	0.47	0.98	MWD/SLI
1.16	-1.15	0.10	MWD/SLI
0.99	-0.09	0.99	MWD/SLI
0.97	0.94	-0.26	MWD/SLI
1.38	1.33	0.37	MWD/SLI
2.23	-0.39	-2.20	MWD/SLI
0.63	-0.56	0.29	MWD/SLI
0.66	0.09	-0.66	MWD/SLI
0.85	0.76	0.37	MWD/SLI
1.34	-0.47	-1.26	MWD/SLI
0.70	-0.38	-0.59	MWD/SLI
1.09	0.47	0.98	MWD/SLI
1.23	0.28	-1.19	MWD/SLI
1.64	-0.67	1.49	MWD/SLI
1.36	0.67	-1.18	MWD/SLI
0.67	-0.19	0.65	MWD/SLI
0.23	0.00	0.23	MWD/SLI
4.47	2.37	3.80	MWD/SLI
1.38	-1.23	-0.63	MWD/SLI
1.37	-1.34	0.29	MWD/SLI
1.32	0.71	-1.12	MWD/SLI
0.00	0.00	0.00	

RECEIVED
Office of Oil and Gas
SEP 08 2015
WV Department of
Environmental Protection

10/09/2015

69-00162

$\frac{R^2}{A} \rightarrow V^+$ ®

RECEIVED
Office of Oil and Gas

SEP 08 2015

U.S. Department of
Environmental Protection

10/09/2015

