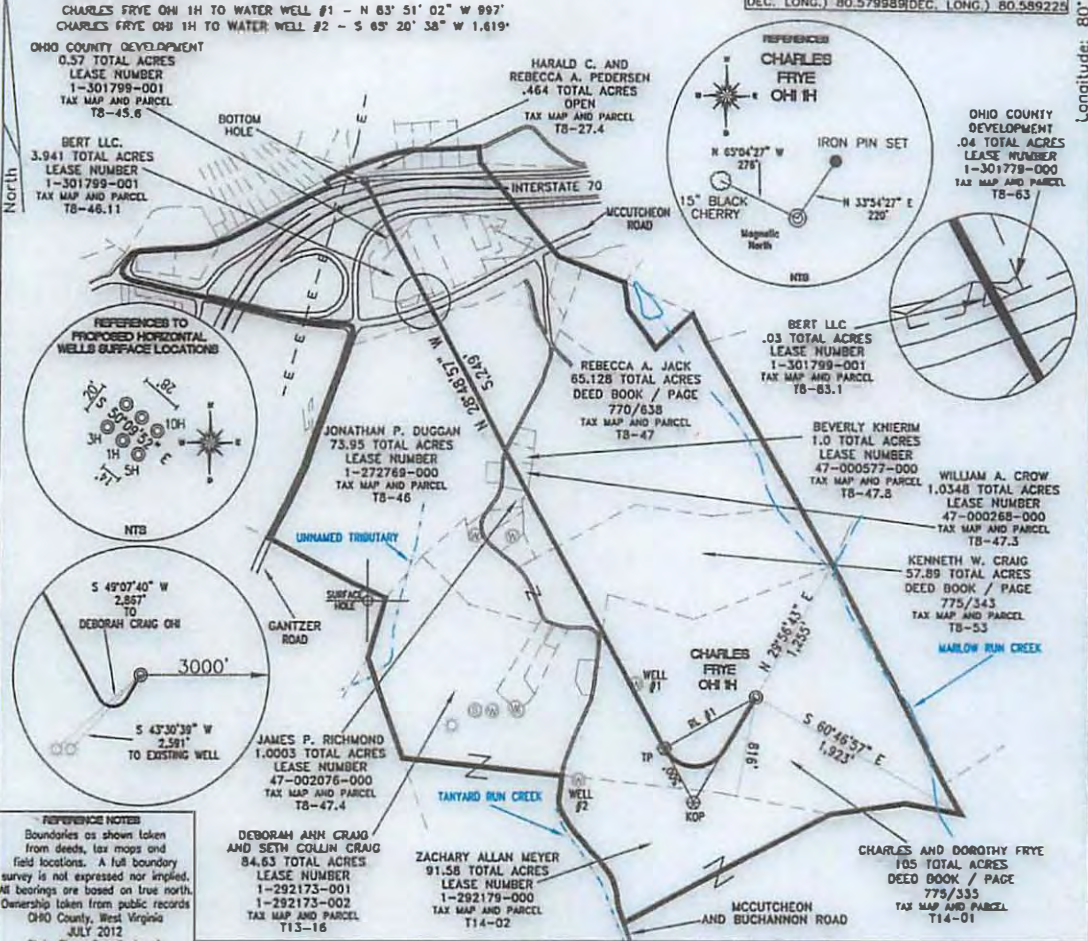


SURFACE HOLE DEC. LONG: 80.577312
 SURVEYED LONG: 80° 34' 38.3"

9,950'

Latitude: 40° 05' 00" (NAD 27)

TOP HOLE (NAD 83) N) 567504.9 E) 1666984.9 LAT.) 40°03'11.2" LONG.) 80°34'37.6" DEC. LAT.) 40.053102 DEC. LONG.) 80.577107	KOP (NAD 83) N) 566651.8 E) 1666471.4 LAT.) 40°03'02.7" LONG.) 80°34'44.1" DEC. LAT.) 40.050744 DEC. LONG.) 80.578905	TH (UTM-NAD 83) N) 4433736.8 E) 536070.0	REFERENCE LINES RL #1 S 61°11'03" W 861'	TP (NAD 83) N) 567089.9 E) 1666230.4 LAT.) 40°03'07.0" LONG.) 80°34'47.2" DEC. LAT.) 40.051938 DEC. LONG.) 80.579784	BOTTOM HOLE (NAD 83) N) 571695.1 E) 1663700.3 LAT.) 40°03'52.1" LONG.) 80°35'20.5" DEC. LAT.) 40.064479 DEC. LONG.) 80.589021
TOP HOLE (NAD 27) N) 567468.0 E) 1698419.4 LAT.) 40°03'10.9" LONG.) 80°34'38.3" DEC. LAT.) 40.053029 DEC. LONG.) 80.577312	KOP (NAD 27) N) 566614.8 E) 1697906.0 LAT.) 40°03'02.4" LONG.) 80°34'44.8" DEC. LAT.) 40.050670 DEC. LONG.) 80.579109	BOTTOM HOLE (UTM-NAD 83) N) 4434994.8 E) 535048.0		TP (NAD 27) N) 567052.9 E) 1697665.0 LAT.) 40°03'08.7" LONG.) 80°34'48.0" DEC. LAT.) 40.051865 DEC. LONG.) 80.579989	BOTTOM HOLE (NAD 27) N) 571652.2 E) 1695134.9 LAT.) 40°03'51.9" LONG.) 80°35'21.2" DEC. LAT.) 40.064006 DEC. LONG.) 80.589228



REFERENCES TO PROPOSED HORIZONTAL WELLS SURFACE LOCATIONS

NTS

5 49°07'40" W 2,887'
TO DEBORAH CRAIG OHI

3000'

5 43°30'39" W 2,581'
TO EXISTING WELL

REFERENCE NOTES
 Boundaries as shown taken from deeds, tax maps and field locations. A full boundary survey is not expressed nor implied. All bearings are based on true north. Ownership taken from public records Ohio County, West Virginia JULY 2012
 State Plane Coordinates & NAD 83 Lat/Long by differential submeter mapping grade GPS Drafted by EAM

I, THE UNDERSIGNED, HEREBY CERTIFY THAT THIS PLAT IS CORRECT TO THE BEST OF MY KNOWLEDGE AND BELIEF AND SHOWS ALL THE INFORMATION REQUIRED BY LAW AND THE REGULATIONS ISSUED AND PRESCRIBED BY THE DEPARTMENT OF ENVIRONMENTAL PROTECTION.

Signed: _____

L.L.S. #2124 : Ernest J. Benchek III



FILE #: CHE 046
 DRAWING #: 2089
 SCALE: 1" = 1200'
 MINIMUM DEGREE OF ACCURACY: 1/200
 PROVEN SOURCE OF ELEVATION: SUBMETER MAPPING GRADE GPS

DATE: AUGUST 6, 2012

OPERATOR'S WELL #: CHARLES FRYE OHI 1H

API WELL #: 47 69 0016146A
 STATE COUNTY PERMIT

WATERSHED: UPPER OHIO SOUTH ELEVATION: 1,260'

COUNTY/DISTRICT: OHIO / TRIADPHIA QUADRANGLE: VALLEY GROVE, WV.

SURFACE OWNER: CHARLES AND DOROTHY FRYE ACREAGE: 105.00 +/-

OIL & GAS ROYALTY OWNER: CHARLES AND DOROTHY FRYE ACREAGE: 368.8581 +/-

LEASE NUMBERS:

(+) DENOTES LOCATION OF WELL ON UNITED STATES TOPOGRAPHIC MAPS

WVDEP OFFICE OF OIL & GAS
 601 57TH STREET
 CHARLESTON, WV 25304

Well Type: Oil Waste Dposal Production Deep
 Gas Liquid Injection Storage Shallow

DRILL CONVERT DRILL DEEPER REDRILL FRACTURE OR STIMULATE
 PLUG OFF FORMATION PERFORATE NEW FORMATION PLUG & ABANDON
 CLEAN OUT & REPLUG OTHER CHANGE (SPECIFY):

TARGET FORMATION: MARCELLUS ESTIMATED DEPTH: TVD: 6,500' TMD: 12,145'

WELL OPERATOR: CHESAPEAKE APPALACHIA, LLC. DESIGNATED AGENT: ERIC GILLESPIE

ADDRESS: PO BOX 18496 ADDRESS: PO BOX 6070

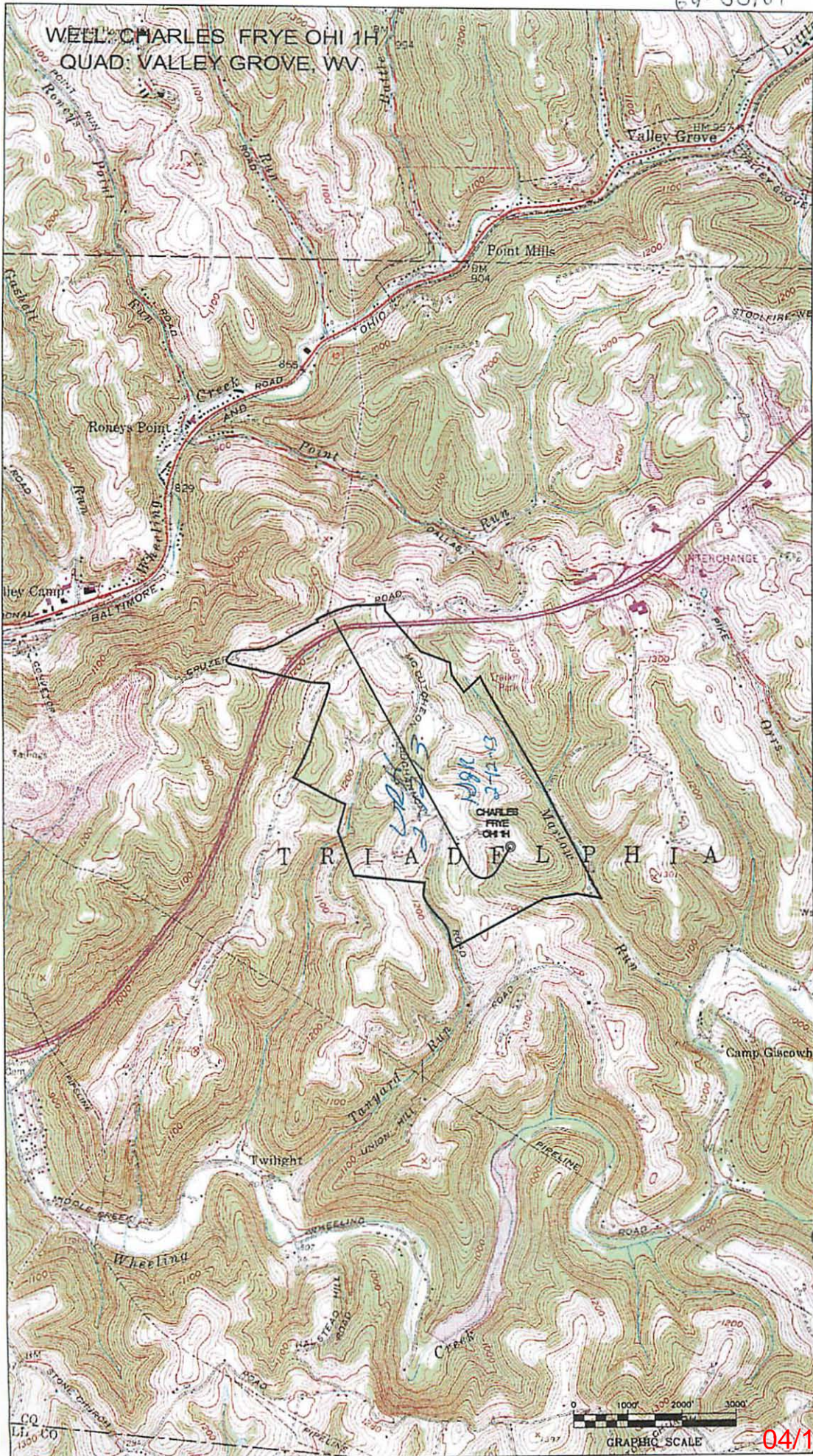
CITY: OKLAHOMA CITY STATE: OK ZIP CODE: 73154-0496 CITY: CHARLESTON STATE: WV ZIP CODE: 25304

Longitude: 80° 32' 30" (NAD 27)

SURFACE HOLE DEC. LAT: 40.053029 SURVEYED LAT: 40° 03' 10.9"

04/19/2013

WELL: CHARLES FRYE OHI 1H
QUAD: VALLEY GROVE, WV.



69-00161 H65