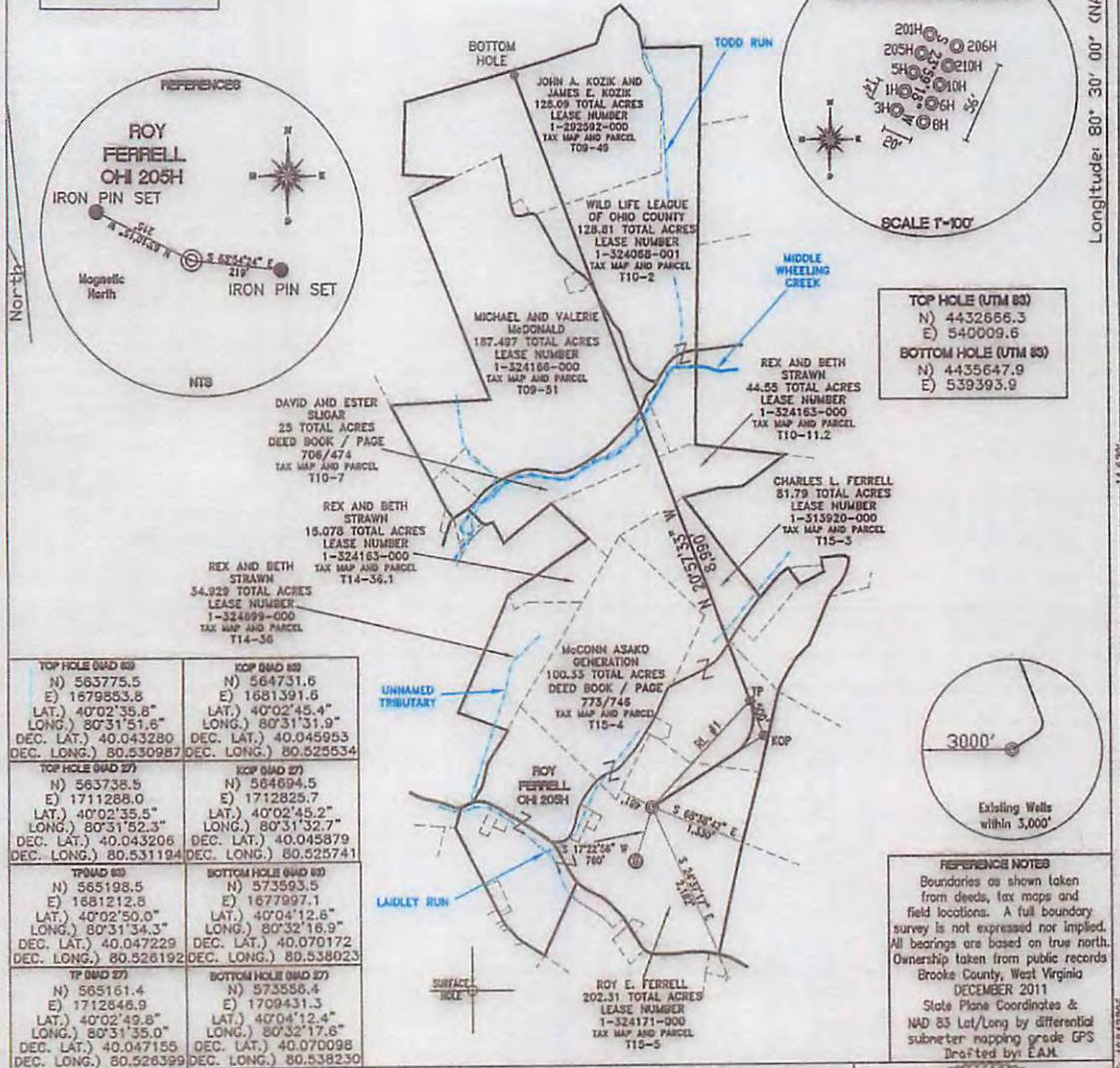
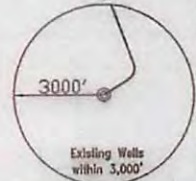


REFERENCE LINES
RL #1
N 45°40'54" E 1,968'



TOP HOLE (U/M 83) N) 563775.5 E) 1879553.8 LAT.) 40°02'35.8" LONG.) 80°31'51.8" DEC. LAT.) 40.043280 DEC. LONG.) 80.530987	KOP (M/D 83) N) 564731.6 E) 1681391.6 LAT.) 40°02'45.4" LONG.) 80°31'31.9" DEC. LAT.) 40.045953 DEC. LONG.) 80.525534
TOP HOLE (M/D 27) N) 563738.5 E) 1711288.0 LAT.) 40°02'35.5" LONG.) 80°31'52.3" DEC. LAT.) 40.043206 DEC. LONG.) 80.531194	KOP (M/D 27) N) 564894.5 E) 1712825.7 LAT.) 40°02'45.2" LONG.) 80°31'32.7" DEC. LAT.) 40.045879 DEC. LONG.) 80.525741
TP (M/D 83) N) 565198.5 E) 1681212.8 LAT.) 40°02'50.0" LONG.) 80°31'34.3" DEC. LAT.) 40.047229 DEC. LONG.) 80.528192	BOTTOM HOLE (M/D 83) N) 573593.5 E) 1677997.1 LAT.) 40°04'12.6" LONG.) 80°32'16.9" DEC. LAT.) 40.070172 DEC. LONG.) 80.538023
TP (M/D 27) N) 565161.4 E) 1712646.9 LAT.) 40°02'49.8" LONG.) 80°31'35.0" DEC. LAT.) 40.047155 DEC. LONG.) 80.528399	BOTTOM HOLE (M/D 27) N) 573556.4 E) 1709431.3 LAT.) 40°04'12.4" LONG.) 80°32'17.6" DEC. LAT.) 40.070098 DEC. LONG.) 80.538230

TOP HOLE (UTM 83)
N) 4432666.3
E) 540009.6
BOTTOM HOLE (UTM 83)
N) 4435647.9
E) 539393.9



REFERENCE NOTES
Boundaries as shown taken from deeds, tax maps and field locations. A full boundary survey is not expressed nor implied. All bearings are based on true north. Ownership taken from public records Brooke County, West Virginia DECEMBER 2011 State Plane Coordinates & NAD 83 Lat/Long by differential submeter mapping grade GPS Drafted by EAM

FILE #: CHE 034
DRAWING #: 1972
SCALE: 1"=2000'
MINIMUM DEGREE OF ACCURACY: 1/200
PROVEN SOURCE SUBMETER MAPPING OF ELEVATION: GRADE GPS

I, THE UNDERSIGNED, HEREBY CERTIFY THAT THIS PLAN IS CORRECT TO THE BEST OF MY KNOWLEDGE AND BELIEF AND SHOWS ALL THE INFORMATION REQUIRED BY LAW AND THE REGULATIONS ISSUED AND PRESCRIBED BY THE DEPARTMENT OF ENVIRONMENTAL PROTECTION.
Signed: _____
L.L.S. #2124 : Ernest J. Benchek III



(+) DENOTES LOCATION OF WELL ON UNITED STATES TOPOGRAPHIC MAPS WYDEP
OFFICE OF OIL & GAS
601 5TH STREET
CHARLESTON, WV 25304

Well Type: Oil Waste Disposal Production Deep
 Gas Liquid Injection Storage Shallow

WATERSHED: UPPER OHIO SOUTH ELEVATION: 1,196'

COUNTY/DISTRICT: OHIO/TRIADELPHIA QUADRANGLE: VALLEY GROVE WV.

SURFACE OWNER: ROY E. FERRELL ACREAGE: 202.31 +/-
OIL & GAS ROYALTY OWNER: ROY E. FERRELL ACREAGE: 814.117 +/-
LEASE NUMBERS: _____

DATE: JANUARY 4, 2013
OPERATOR'S WELL #: ROY FERRELL OH 205H
API WELL #: 47 69 00159 H&A
STATE COUNTY PERMIT

DRILL CONVERT DRILL DEEPER REDRILL FRACTURE OR STIMULATE
PLUG OFF FORMATION PERFORATE NEW FORMATION PLUG & ABANDON
CLEAN OUT & REPLUG OTHER CHANGE (SPECIFY): _____

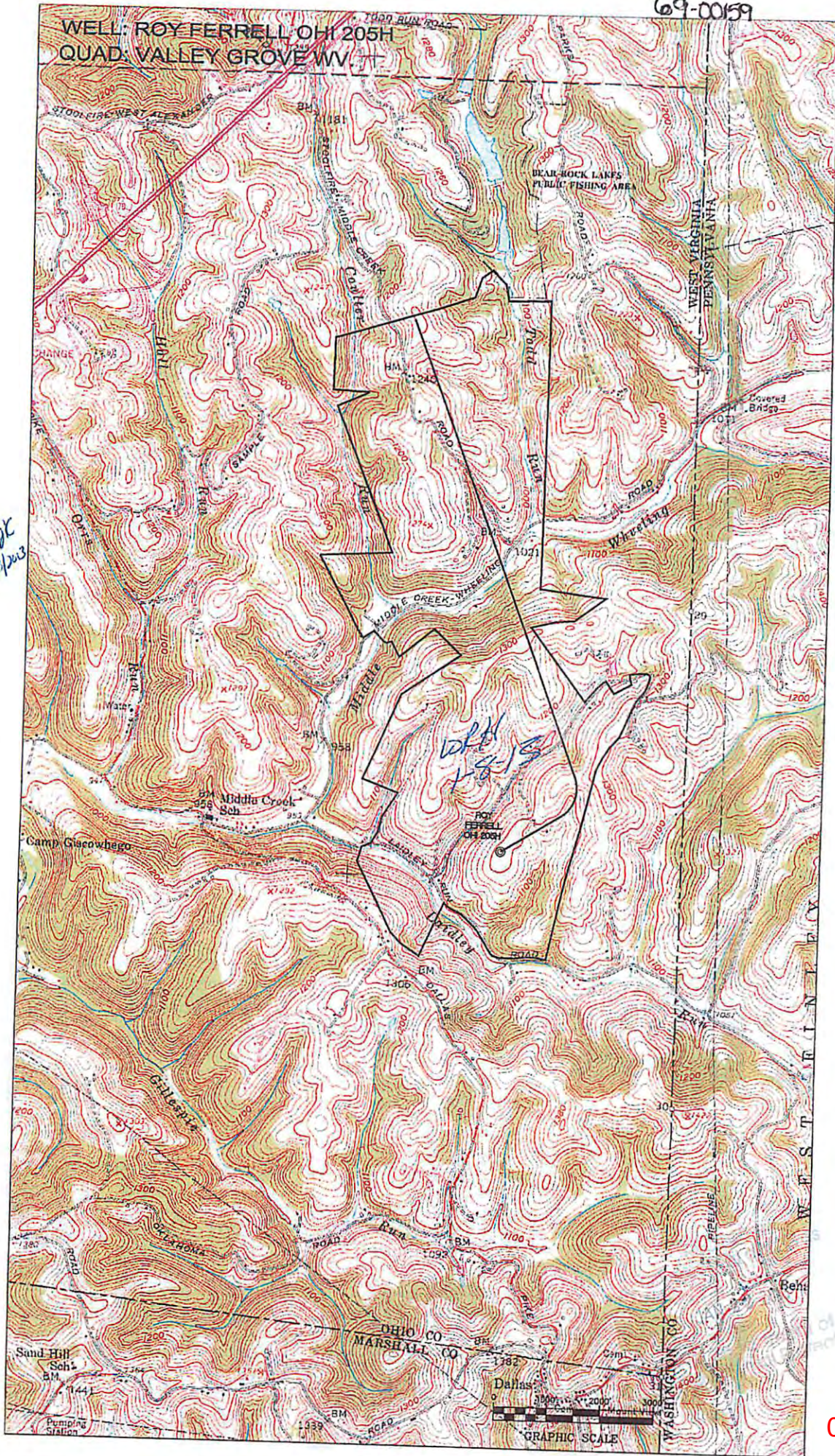
TARGET FORMATION: MARCELLUS ESTIMATED DEPTH: TVD: 6,660' TMD: 16,320'
WELL OPERATOR: CHESAPEAKE APPALACHIA, LLC. DESIGNATED AGENT: ERIC B. GILLESPIE
ADDRESS: PO BOX 18496 ADDRESS: PO BOX 6070
CITY: OKLAHOMA CITY STATE: OK ZIP CODE: 73154-0496 CITY: CHARLESTON STATE: WV ZIP CODE: 25301

04/05/2013

69-00159

WELL: ROY FERRELL OH 205H
QUAD: VALLEY GROVE WV

MSX
11/8/2013



04/05/2013