

<p><b>TOP HOLE (NAD 83)</b> N) 608940.7 E) 1667302.6 LAT.) 40°10'00.7" LONG.) 80°34'39.9" DEC. LAT.) 40.166851 DEC. LONG.) 80.577748</p>	<p><b>KOP (NAD 83)</b> N) 608548.3 E) 1666275.2 LAT.) 40°09'56.7" LONG.) 80°34'53.1" DEC. LAT.) 40.165740 DEC. LONG.) 80.581407</p>
<p><b>TOP HOLE (NAD 27)</b> N) 608903.6 E) 1698737.2 LAT.) 40°10'00.4" LONG.) 80°34'40.6" DEC. LAT.) 40.166779 DEC. LONG.) 80.577953</p>	<p><b>KOP (NAD 27)</b> N) 608511.3 E) 1697709.8 LAT.) 40°09'56.4" LONG.) 80°34'53.8" DEC. LAT.) 40.165668 DEC. LONG.) 80.581612</p>
<p><b>TP (NAD 83)</b> N) 609013.6 E) 1666092.2 LAT.) 40°10'01.2" LONG.) 80°34'55.5" DEC. LAT.) 40.167011 DEC. LONG.) 80.582082</p>	<p><b>BOTTOM HOLE (NAD 83)</b> N) 616725.0 E) 1663059.4 LAT.) 40°11'17.1" LONG.) 80°35'35.8" DEC. LAT.) 40.188077 DEC. LONG.) 80.593269</p>
<p><b>TP (NAD 27)</b> N) 608976.6 E) 1697526.8 LAT.) 40°10'01.0" LONG.) 80°34'56.2" DEC. LAT.) 40.168939 DEC. LONG.) 80.582287</p>	<p><b>BOTTOM HOLE (NAD 27)</b> N) 616688.0 E) 1694494.1 LAT.) 40°11'16.8" LONG.) 80°35'36.5" DEC. LAT.) 40.188005 DEC. LONG.) 80.593473</p>

**REFERENCE LINES**  
RL #1  
N 86°33'06" W 1213'

**TH (UTM-NAD 83)**  
N) 4446361.8  
E) 535955.4  
**BOTTOM HOLE (UTM-NAD 83)**  
N) 4448711.6  
E) 534623.1

**REFERENCE NOTES**  
Boundaries as shown taken from deeds, tax maps and field locations. A full boundary survey is not expressed nor implied. All bearings are based on true north. Ownership taken from public records Ohio County, West Virginia MAY 2011  
State Plane Coordinates & NAD 83 Lat/Long by differential submeter mapping grade GPS  
Drafted by: E.A.M.

FILE #: CHE 025  
DRAWING #: 2138  
SCALE: 1"=1600'  
MINIMUM DEGREE OF ACCURACY: 1/200  
PROVEN SOURCE OF ELEVATION: SUBMETER MAPPING GRADE GPS

I, THE UNDERSIGNED, HEREBY CERTIFY THAT THIS PLAT IS CORRECT TO THE BEST OF MY KNOWLEDGE AND BELIEF AND SHOWS ALL THE INFORMATION REQUIRED BY LAW AND THE REGULATIONS ISSUED AND PRESCRIBED BY THE DEPARTMENT OF ENVIRONMENTAL PROTECTION.

Signed: \_\_\_\_\_  
L.L.S. #2124 : Ernest J. Benchek III



(+) DENOTES LOCATION OF WELL ON UNITED STATES TOPOGRAPHIC MAPS WVDEP  
OFFICE OF OIL & GAS  
601 57TH STREET  
CHARLESTON, WV 25304

Well Type:  Oil  Waste Diposal  Production  Deep  
 Gas  Liquid Injection  Storage  Shallow

WATERSHED: UPPER OHIO SOUTH ELEVATION: 1,324'

COUNTY/DISTRICT: OHIO/LIBERTY QUADRANGLE: BETHANY WV.

SURFACE OWNER: LARRY G. BALL ACREAGE: 130.457 +/-  
OIL & GAS ROYALTY OWNER: LARRY G. BALL ACREAGE: 554.88 +/-  
LEASE NUMBERS: \_\_\_\_\_

DRILL  CONVERT  DRILL DEEPER  REDRILL  FRACTURE OR STIMULATE   
PLUG OFF FORMATION  PERFORATE NEW FORMATION  PLUG & ABANDON   
CLEAN OUT & REPLUG  OTHER CHANGE  (SPECIFY): \_\_\_\_\_

TARGET FORMATION: MARCELLUS ESTIMATED DEPTH: TVD: 6,250' TMD: 15,017'  
WELL OPERATOR : CHESAPEAKE APPALACHIA, LLC. DESIGNATED AGENT : ERIC B. GILLESPIE  
ADDRESS: PO BOX 18496 ADDRESS: Po Box 6070  
CITY: OKLAHOMA CITY STATE: OK ZIP CODE: 73154-0496 CITY: CHARLESTON STATE: WV ZIP CODE: 25301

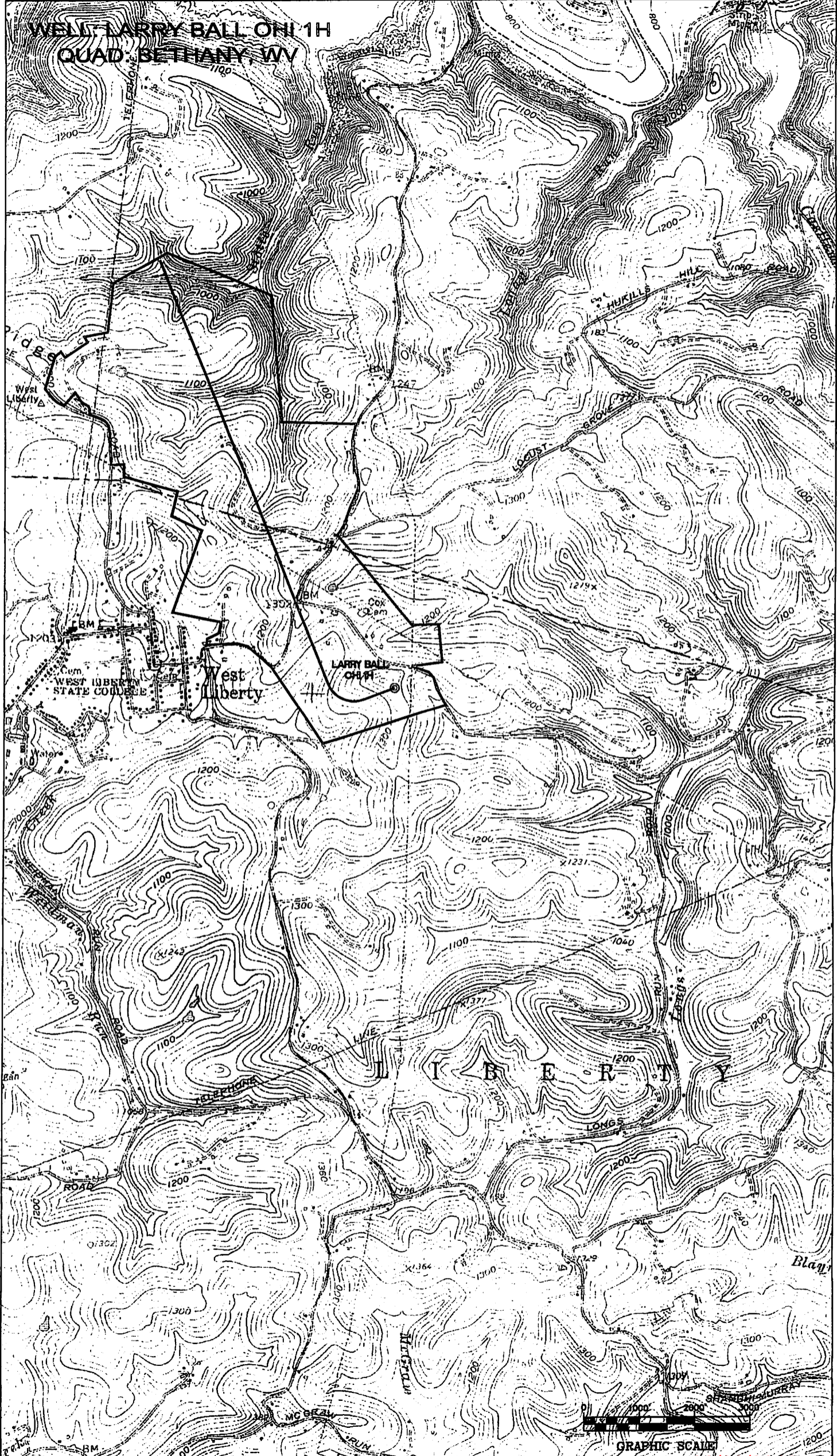
DATE: JANUARY 4, 2013  
OPERATOR'S WELL #: LARRY BALL OHI 1H  
API WELL #: 47 69 00158 H6A  
STATE COUNTY PERMIT

02/22/2013



MDK 11/8/2013 LKH 11/13

WELL LARRY BALL OH 1H  
QUAD: BETHANY WV



69-00158 H6A LARRY BALL OH 1H



02/22/2013