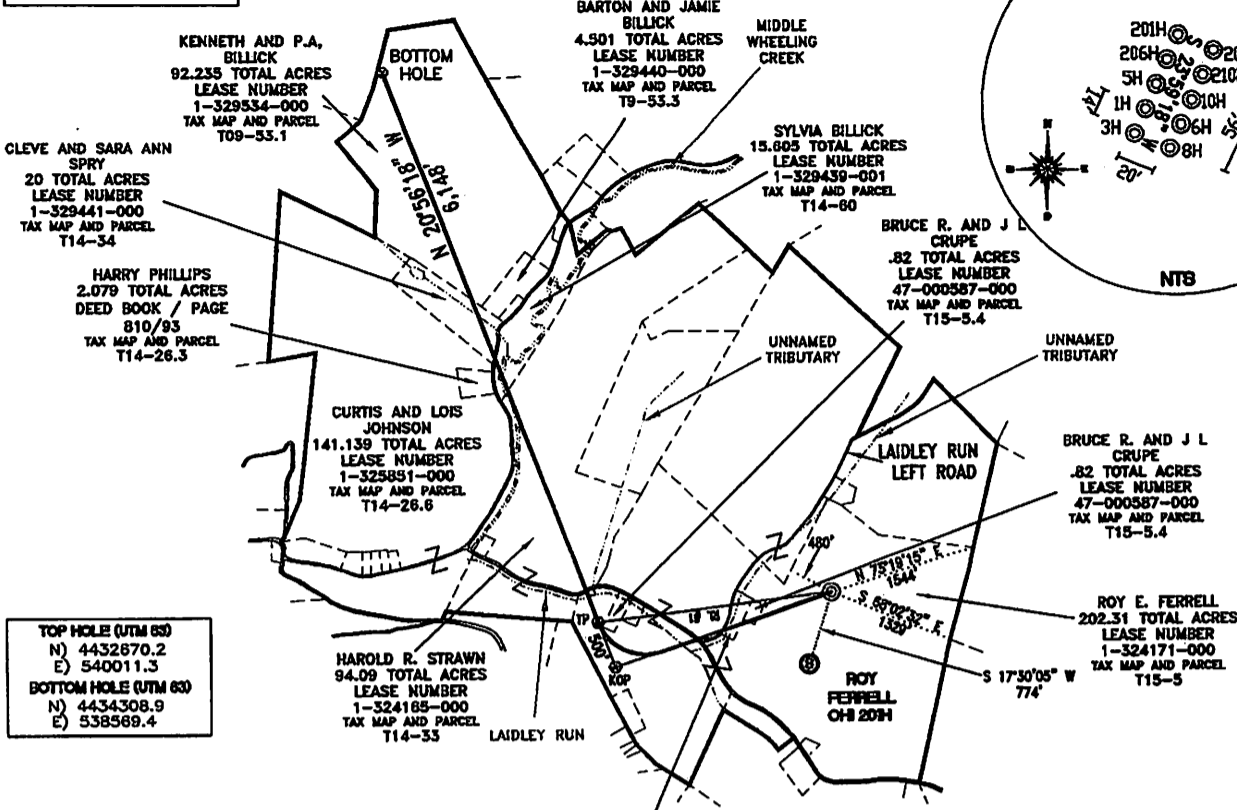
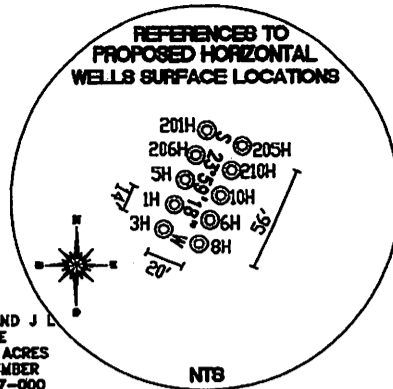
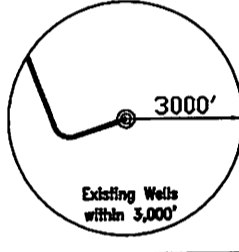
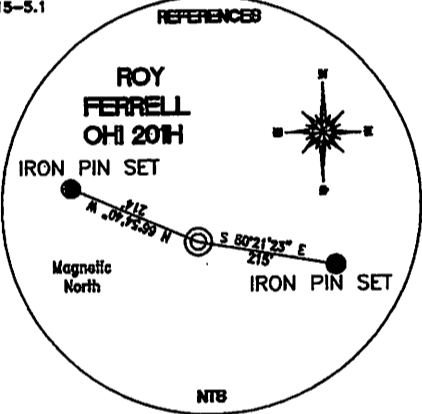


**REFERENCE LINES**  
RL #1  
S 83°20'58" W 2,461'



**TOP HOLE (UTM 63)**  
N) 4432670.2  
E) 540011.3  
**BOTTOM HOLE (UTM 63)**  
N) 4434308.9  
E) 538589.4

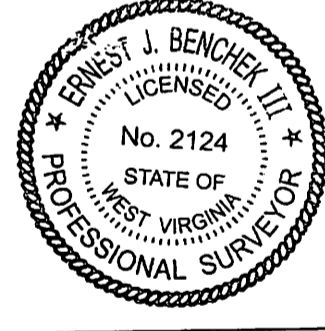
<b>TOP HOLE (NAD 83)</b> N) 563788.3 E) 1679859.5 LAT.) 40°02'35.9" LONG.) 80°31'51.5" DEC. LAT.) 40.043316 DEC. LONG.) 80.530967	<b>KOP (NAD 83)</b> N) 563030.9 E) 1677595.9 LAT.) 40°02'28.2" LONG.) 80°32'20.5" DEC. LAT.) 40.041165 DEC. LONG.) 80.539021
<b>TOP HOLE (NAD 27)</b> N) 563751.3 E) 1711293.7 LAT.) 40°02'35.7" LONG.) 80°31'52.2" DEC. LAT.) 40.043242 DEC. LONG.) 80.531174	<b>KOP (NAD 27)</b> N) 562993.9 E) 1709030.1 LAT.) 40°02'27.9" LONG.) 80°32'21.2" DEC. LAT.) 40.041091 DEC. LONG.) 80.539227
<b>TP (NAD 83)</b> N) 563503.3 E) 1677415.1 LAT.) 40°02'32.8" LONG.) 80°32'22.9" DEC. LAT.) 40.042456 DEC. LONG.) 80.539686	<b>BOTTOM HOLE (NAD 83)</b> N) 569245.0 E) 1675218.2 LAT.) 40°03'29.3" LONG.) 80°32'52.0" DEC. LAT.) 40.058147 DEC. LONG.) 80.547771
<b>TP (NAD 27)</b> N) 563466.3 E) 1708849.3 LAT.) 40°02'32.6" LONG.) 80°32'23.6" DEC. LAT.) 40.042382 DEC. LONG.) 80.539892	<b>BOTTOM HOLE (NAD 27)</b> N) 569208.0 E) 1706652.5 LAT.) 40°03'29.1" LONG.) 80°32'52.7" DEC. LAT.) 40.058073 DEC. LONG.) 80.547977



**REFERENCE NOTES**  
Boundaries as shown taken from deeds, tax maps and field locations. A full boundary survey is not expressed nor implied. All bearings are based on true north. Ownership taken from public records Brooke County, West Virginia DECEMBER 2011 State Plane Coordinates & NAD 83 Lat/Long by differential submeter mapping grade GPS Drafted by E.A.M.

FILE #: CHE 034  
DRAWING #: 1972  
SCALE: 1"=2000'  
MINIMUM DEGREE OF ACCURACY: 1/200  
PROVEN SOURCE SUBMETER MAPPING OF ELEVATION: GRADE GPS

I, THE UNDERSIGNED, HEREBY CERTIFY THAT THIS PLAT IS CORRECT TO THE BEST OF MY KNOWLEDGE AND BELIEF AND SHOWS ALL THE INFORMATION REQUIRED BY LAW AND THE REGULATIONS ISSUED AND PRESCRIBED BY THE DEPARTMENT OF ENVIRONMENTAL PROTECTION.  
Signed:   
L.L.S. #2124 : Ernest J. Benchek III



(+) DENOTES LOCATION OF WELL ON UNITED STATES TOPOGRAPHIC MAPS WVDEP  
**OFFICE OF OIL & GAS**  
601 57TH STREET  
CHARLESTON, WV 25304

DATE: JANUARY 4, 2013  
OPERATOR'S WELL #: ROY FERRELL OHI 201H  
API WELL #: 47 69 00157H6A  
STATE COUNTY PERMIT

Well Type:  Oil  Waste Diposal  Production  Deep  
 Gas  Liquid Injection  Storage  Shallow

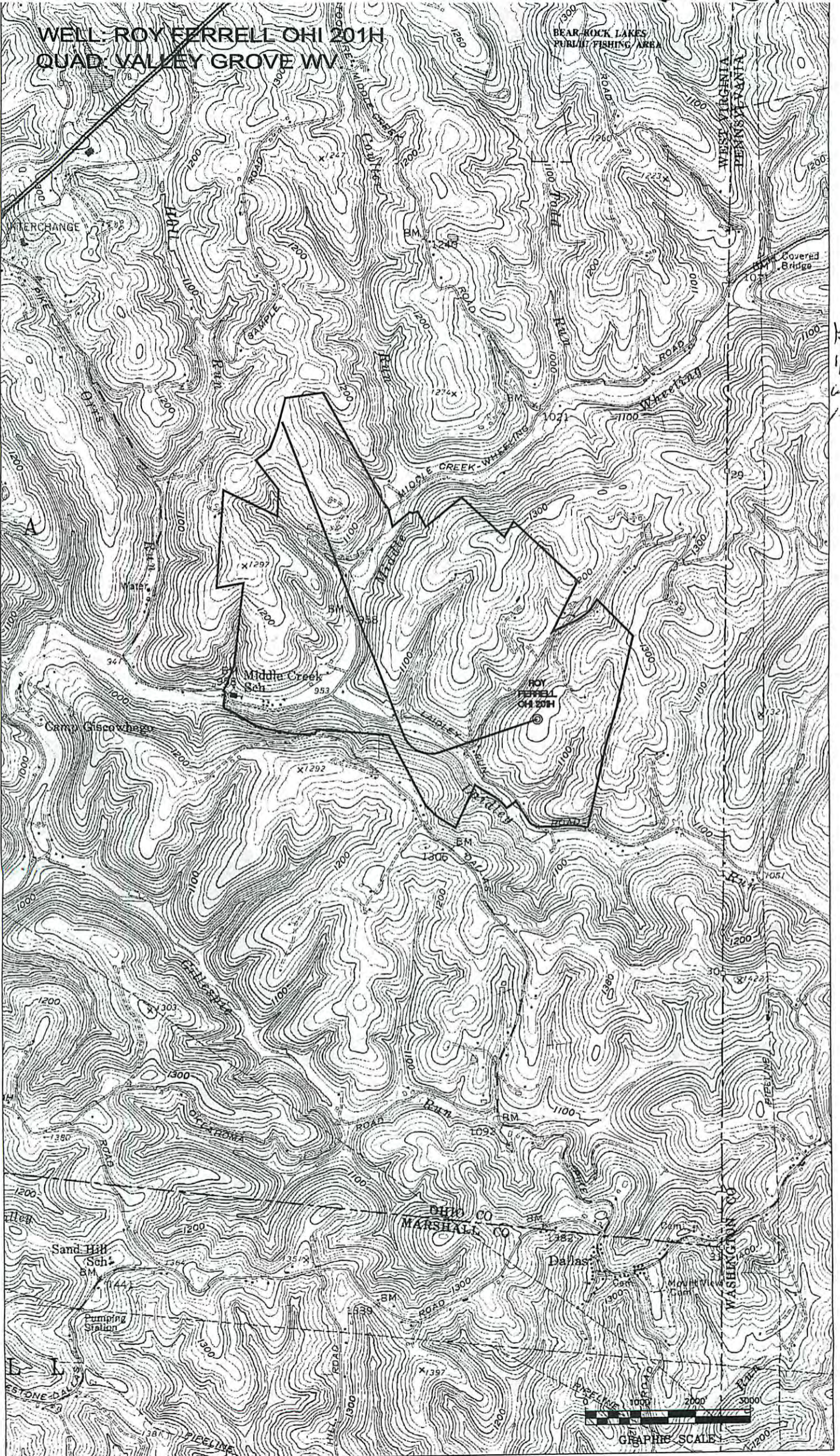
WATERSHED: UPPER OHIO SOUTH ELEVATION: 1,196'  
COUNTY/DISTRICT: OHIO/TRIADELPHIA QUADRANGLE: VALLEY GROVE WV.  
SURFACE OWNER: ROY E. FERRELL ACREAGE: 202.31 +/-  
OIL & GAS ROYALTY OWNER: ROY E. FERRELL ACREAGE: 549.949 +/-  
LEASE NUMBERS:

DRILL  CONVERT  DRILL DEEPER  REDRILL  FRACTURE OR STIMULATE   
PLUG OFF FORMATION  PERFORATE NEW FORMATION  PLUG & ABANDON   
CLEAN OUT & REPLUG  OTHER CHANGE  (SPECIFY):

TARGET FORMATION: MARCELLUS ESTIMATED DEPTH: TVD: 6,660' TMD: 13,570'  
WELL OPERATOR: CHESAPEAKE APPALACHIA, LLC. DESIGNATED AGENT: ERIC B. GILLESPIE  
ADDRESS: PO BOX 18496 ADDRESS: PO BOX 6070  
CITY: OKLAHOMA CITY STATE: OK ZIP CODE: 73154-0496 CITY: CHARLESTON STATE: WV ZIP CODE: 25301

69-00157

WELL: ROY FERRELL OHI 201H  
QUAD: VALLEY GROVE WV



MSK  
1/8/12  
WAT  
1-8-1.

03/15/2013