

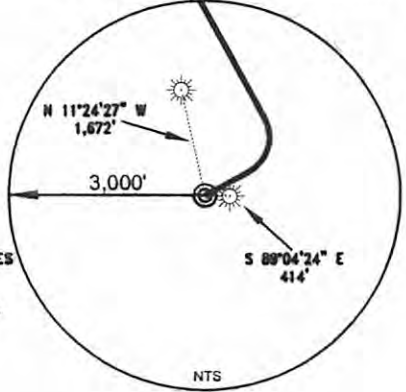
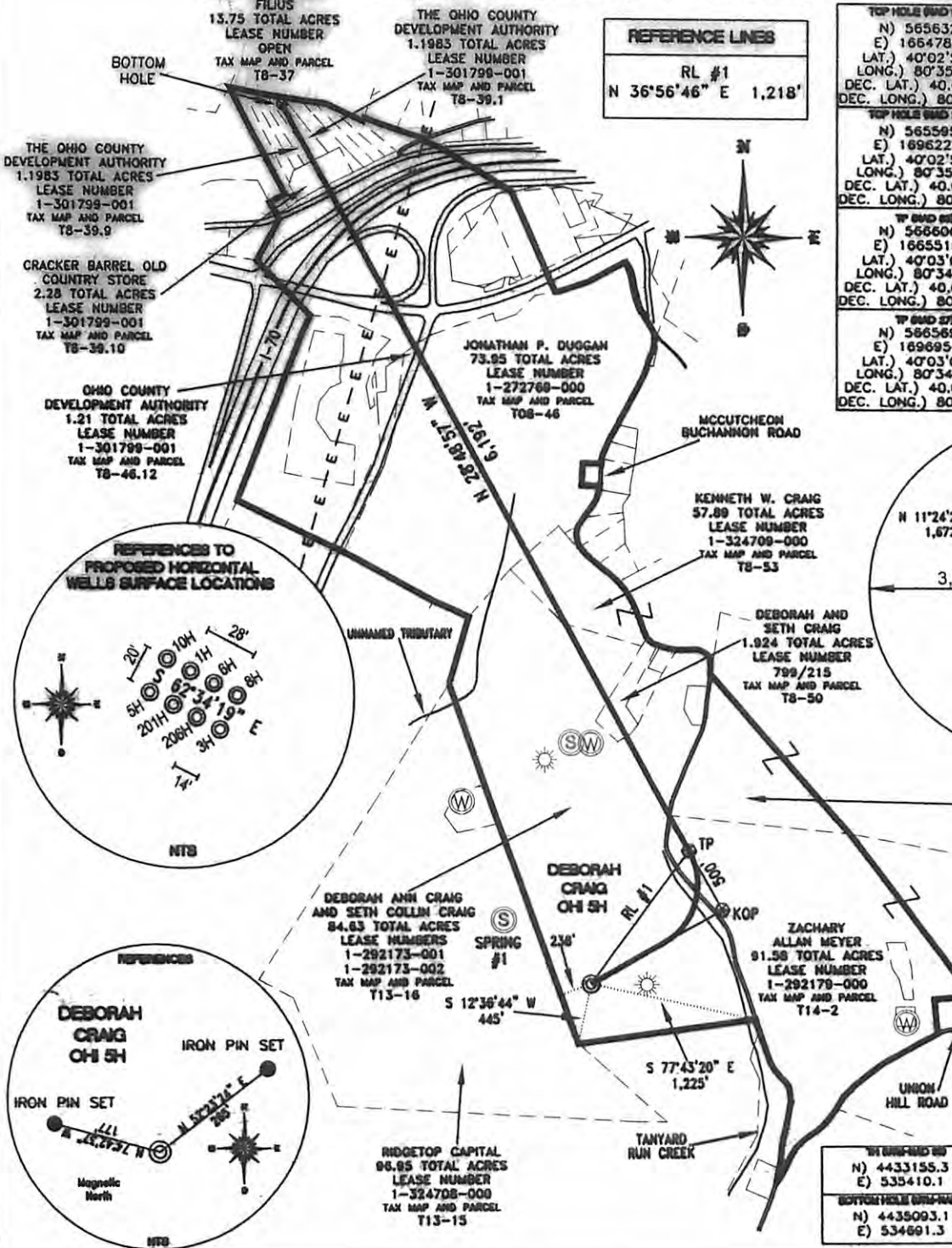
SYLVIA AND HARRIET M. DEBORAH CRAIG OHI 5H TO SPRING #1 - N 53° 50' 10" W 792'

Latitude: 40° 05' 00" (NAD 27)

**REFERENCE LINES**  
RL #1  
N 36°56'46" E 1,218'

<b>TOP HOLE (BMD 69)</b> N) 565632.8 E) 1664787.4 LAT.) 40°02'52.4" LONG.) 80°35'05.6" DEC. LAT.) 40.047891 DEC. LONG.) 80.584876	<b>KOP (BMD 69)</b> N) 566168.1 E) 1665760.5 LAT.) 40°02'57.8" LONG.) 80°34'53.1" DEC. LAT.) 40.049393 DEC. LONG.) 80.581423
<b>TOP HOLE (BMD 27)</b> N) 565595.9 E) 1696222.1 LAT.) 40°02'52.1" LONG.) 80°35'06.3" DEC. LAT.) 40.047817 DEC. LONG.) 80.585080	<b>KOP (BMD 27)</b> N) 566131.2 E) 1697195.1 LAT.) 40°02'57.6" LONG.) 80°34'53.9" DEC. LAT.) 40.049319 DEC. LONG.) 80.581627
<b>TP (BMD 69)</b> N) 566606.2 E) 1665519.5 LAT.) 40°03'02.1" LONG.) 80°34'56.3" DEC. LAT.) 40.050587 DEC. LONG.) 80.582303	<b>BOTTOM HOLE (BMD 69)</b> N) 572031.5 E) 1662535.0 LAT.) 40°03'55.4" LONG.) 80°35'35.5" DEC. LAT.) 40.085380 DEC. LONG.) 80.593199
<b>TP (BMD 27)</b> N) 566569.3 E) 1696954.1 LAT.) 40°03'01.9" LONG.) 80°34'57.0" DEC. LAT.) 40.050513 DEC. LONG.) 80.582507	<b>BOTTOM HOLE (BMD 27)</b> N) 571994.6 E) 1693969.7 LAT.) 40°03'55.1" LONG.) 80°35'36.3" DEC. LAT.) 40.065307 DEC. LONG.) 80.593402

Longitude: 80° 35' 00" (NAD 27)



**REFERENCE NOTES**  
 Boundaries as shown taken from deeds, tax maps and field locations. A full boundary survey is not expressed nor implied. All bearings are based on true north. Ownership taken from public records  
 Ohio County, West Virginia  
 JULY 2012  
 State Plane Coordinates & NAD 83 Lat/Long by differential submeter mapping grade GPS  
 Drafted by E.A.H.

<b>TOP HOLE (BMD 69)</b> N) 4433155.3 E) 535410.1	<b>BOTTOM HOLE (BMD 69)</b> N) 4438093.1 E) 534891.3
---	--

FILE #: CHE 083  
 DRAWING #: 2094  
 SCALE: 1" = 1200'  
 MINIMUM DEGREE OF ACCURACY: 1/200  
 PROVEN SOURCE OF ELEVATION: SUBMETER MAPPING GRADE GPS

I, THE UNDERSIGNED, HEREBY CERTIFY THAT THIS PLAT IS CORRECT TO THE BEST OF MY KNOWLEDGE AND BELIEF AND SHOWS ALL THE INFORMATION REQUIRED BY LAW AND THE REGULATIONS ISSUED AND PRESCRIBED BY THE DEPARTMENT OF ENVIRONMENTAL PROTECTION.  
 Signed:   
 L.L.S. #2124 : Ernest J. Benchek III



(+) DENOTES LOCATION OF WELL ON UNITED STATES TOPOGRAPHIC MAPS WYDEP

OFFICE OF OIL & GAS  
 601 57TH STREET  
 CHARLESTON, WV 25304

DATE: AUGUST 6, 2012

OPERATOR'S WELL #: DEBORAH CRAIG OHI 5H

API WELL #: 47 69 00151H6A

STATE COUNTY PERMIT CANCELLED

Well Type:  Oil  Waste Disposal  Production  Deep  Gas  Liquid Injection  Storage  Shallow

WATERSHED: UPPER OHIO SOUTH ELEVATION: 1,335'

COUNTY/DISTRICT: OHIO / TRIADDELPHIA QUADRANGLE: VALLEY GROVE, WV.

SURFACE OWNER: DEBORAH ANN CRAIG AND SETH COLLINS CRAIG ACREAGE: 84.63 +/-

OIL & GAS ROYALTY OWNER: DEBORAH ANN CRAIG AND SETH COLLINS CRAIG ACREAGE: 422.2806 +/-

LEASE NUMBERS:

DRILL  CONVERT  DRILL DEEPER  REDRILL  FRACTURE OR STIMULATE   
 PLUG OFF FORMATION  PERFORATE NEW FORMATION  PLUG & ABANDON   
 CLEAN OUT & REPLUG  OTHER CHANGE  (SPECIFY):

TARGET FORMATION: MARCELLUS ESTIMATED DEPTH: TVD: 6,540' TMD: 13,159'

WELL OPERATOR: CHESAPEAKE APPALACHIA, LLC. DESIGNATED AGENT: ERIC GILLESPIE  
 ADDRESS: PO BOX 18496 ADDRESS: PO BOX 6070  
 CITY: OKLAHOMA CITY STATE: OK ZIP CODE: 73154-0496 CITY: CHARLESTON STATE: WV ZIP CODE: 25301

SURFACE HOLE DEC. LAT: 40.047817 SURVEYED LAT: 40° 02' 52.1" 12,940