

9,415'

LATITUDE 40°12'30"

LONGITUDE 80°37'30"

12,690'

TOP HOLE (NAD 83)  
N: 611548.4  
E: 1644928.4  
LAT: 40°12'23.7"  
LONG: -80°39'28.9"  
DEC. LAT: 40.173244  
DEC. LONG: -80.657919  
UTM N: 4,447,042  
UTM E: 529,128

TOP HOLE (NAD 27)  
N: 611511.5  
E: 1644291.5  
LAT: 40°12'23.4"  
LONG: -80°39'29.2"  
DEC. LAT: 40.173173  
DEC. LONG: -80.658120

BOTTOM HOLE (NAD 83)  
N: 606334.6  
E: 1644291.5  
LAT: 40°09'32.1"  
LONG: -80°39'36.6"  
DEC. LAT: 40.158909  
DEC. LONG: -80.660180  
UTM N: 4,445,450  
UTM E: 528,940

BOTTOM HOLE (NAD 27)  
N: 606297.8  
E: 1643564.7  
LAT: 40°09'31.8"  
LONG: -80°39'37.4"  
DEC. LAT: 40.158837  
DEC. LONG: -80.660380

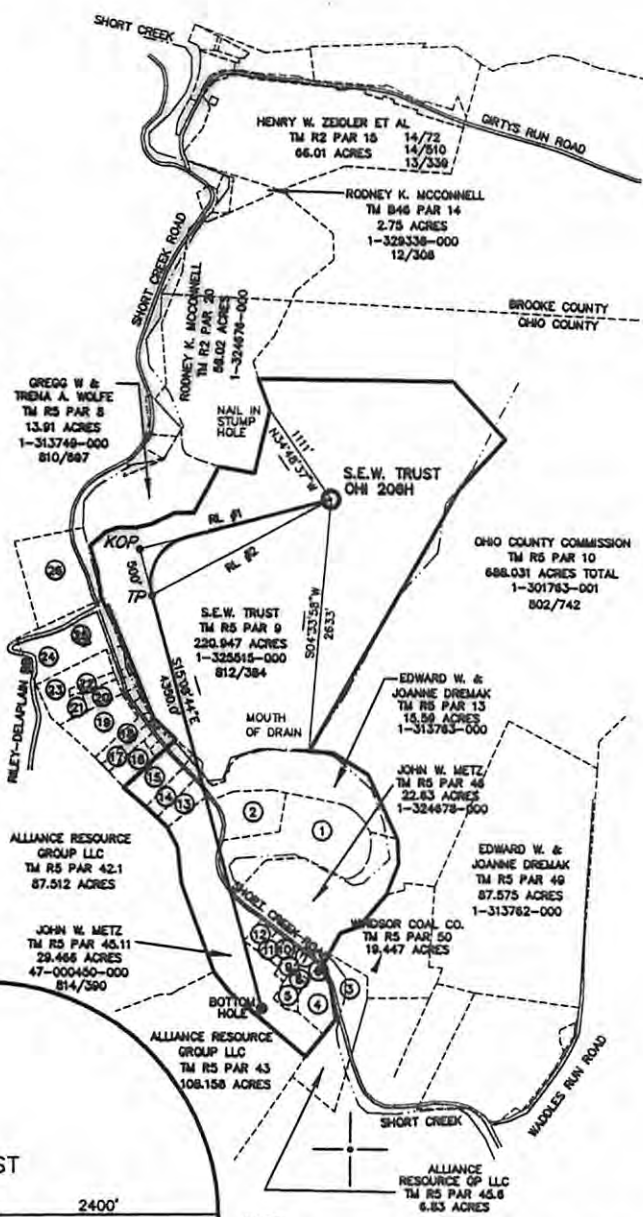
KOP (NAD 27)  
N: 610979.3  
E: 1674397.5  
LAT: 40°10'17.9"  
LONG: -80°39'54.47"  
DEC. LAT: 40.171642  
DEC. LONG: -80.665130

KOP (NAD 83)  
N: 611016.2  
E: 1642862.3  
LAT: 40°10'18.2"  
LONG: -80°39'53.7"  
DEC. LAT: 40.171714  
DEC. LONG: -80.664930

TP (NAD 27)  
N: 610496.7  
E: 1674528.1  
LAT: 40°10'13.2"  
LONG: -80°39'52.7"  
DEC. LAT: 40.170322  
DEC. LONG: -80.664640

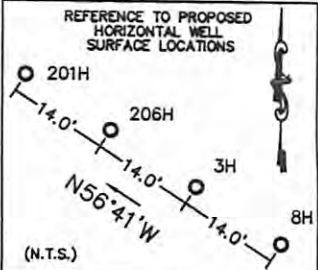
TP (NAD 83)  
N: 610533.5  
E: 1643092.9  
LAT: 40°10'13.4"  
LONG: -80°39'52.0"  
DEC. LAT: 40.170393  
DEC. LONG: -80.664440

NORTH



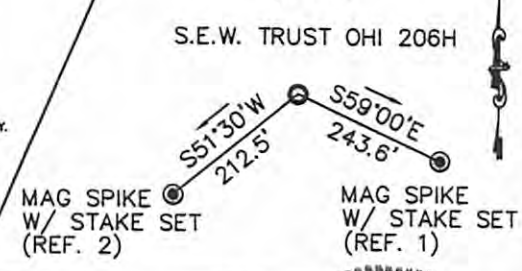
- ① KEVIN T. WOODFORD  
TM R5 PAR 47  
15.59 ACRES  
829/80
- ② PAUL K. YOUNG  
TM R5 PAR 48  
6.8 ACRES  
830/506
- ③ PAUL A. RUTTER  
TM R5 PAR 45.14  
1.446 ACRES
- ④ TUNNEL RIDGE LLC  
TM R5 PAR 45.8  
5.014 ACRES
- ⑤ EDWARD A. SMITH  
TM R5 PAR 45.7  
1.546 ACRES  
830/514
- ⑥ EDWARD A. SMITH  
TM R5 PAR 45.16  
0.214 ACRES  
830/514
- ⑦ CARL TIMPSON  
TM R5 PAR 45.18  
0.244 ACRES
- ⑧ ROBERT KISH  
TM R5 PAR 45.15  
1.082 ACRES  
832/562
- ⑨ MARION S. PAVLIC  
TM R5 PAR 45  
0.975 ACRES
- ⑩ DEBRA L. GARRISON  
TM R5 PAR 45.5  
0.836 ACRES  
832/363
- ⑪ JOHN W. METZ  
TM R5 PAR 46.3  
0.960 ACRES  
814/390
- ⑫ JOHN W. METZ  
TM R5 PAR 45.2  
1.588 ACRES  
814/390
- ⑬ ROBERTA M. CORNER  
TM R5 PAR 45.12  
2.228 ACRES  
1-329109-000  
813/542
- ⑭ ADRIANNA HLEBICZKI  
TM R5 PAR 45.4  
2.836 ACRES  
1-329263-000  
813/554
- ⑮ ADRIANNA HLEBICZKI  
TM R5 PAR 45.13  
3.862 ACRES  
1-329261-000  
813/548
- ⑯ HELEN TAYLOR  
TM R5 PAR 12  
2.62 ACRES
- ⑰ HUMPHREY D. FLICK JR.  
TM R5 PAR 15  
1.64 ACRES
- ⑱ DALE A. VILLANI  
TM R5 PAR 16  
1.63 ACRES
- ⑲ ROBERT H. CONNER  
TM R5 PAR 17  
7.182 ACRES
- ⑳ JAMES A. MATHEWS  
TM R5 PAR 18  
1.87 ACRES
- ㉑ JAMES A. MATHEWS  
TM R5 PAR 18.1  
0.829 ACRES
- ㉒ ERVAN D. TRUBIANO  
TM R5 PAR 19  
1.01 ACRES  
813/534
- ㉓ BRIAN W. SOWZRAL  
TM R5 PAR 20.1  
5.683 ACRES  
810/135
- ㉔ YELMA L. TAGGART  
TM R5 PAR 20  
2.341 ACRES  
813/538
- ㉕ RYAN E. SPARKS  
TM R5 PAR 20.2  
0.459 ACRES
- ㉖ HAROLD COAST  
TM R5 PAR 2.9  
10.94 ACRES  
828/783

REFERENCES LINES	
RL #1	S74°51'16"W 2036.86'
RL #2	S61°03'45"W 2097.33'



REFERENCES

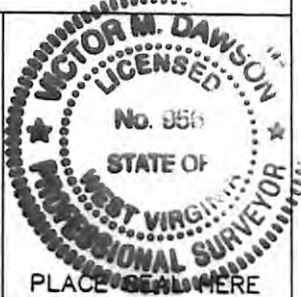
(N.T.S.)



- NOTES:
1. TIES TO WELLS AND CORNERS ARE BASED ON GRID NORTH FOR THE WEST VIRGINIA STATE PLANE COORDINATE SYSTEM, NORTH ZONE NAD 27.
  2. WELL LOCATION REFERENCES ARE BASED ON MAGNETIC MERIDIAN.
  3. BOUNDARIES SHOWN HEREON DERIVED FROM DEEDS, TAX MAPS AND FIELD LOCATION AND ARE NOT INTENDED TO INFER A FULL BOUNDARY SURVEY.
  4. SURFACE OWNERSHIP INFORMATION TAKEN FROM THE ASSESSOR AND COUNTY CLERK RECORDS OF OHIO & BROOKE COUNTIES IN JUNE 2011 THROUGH JANUARY 2012.
  5. WELL COORDINATES ESTABLISHED BY SUBFOOT GPS UNIT.

FILE NO. 11-0167-762  
 DRAWING NO. 206H  
 SCALE 1" = 2000'  
 MINIMUM DEGREE OF ACCURACY 1 IN 2500  
 PROVEN SOURCE OF ELEVATION GPS  
SUBFOOT UNIT

I THE UNDERSIGNED, HEREBY CERTIFY THAT THIS PLAT IS CORRECT TO THE BEST OF MY KNOWLEDGE AND BELIEF AND SHOWS ALL THE INFORMATION REQUIRED BY LAW AND THE REGULATIONS ISSUED AND PRESCRIBED BY THE DEPARTMENT OF ENVIRONMENTAL PROTECTION.  
 (SIGNED) Victor M. Dawson  
 R.P.E. \_\_\_\_\_ P.S. 956



STATE OF WEST VIRGINIA  
 DEPARTMENT OF ENVIRONMENTAL PROTECTION  
 OIL AND GAS DIVISION

DATE FEBRUARY 10, 2012  
 OPERATOR'S WELL NO. SEW TRUST OHI 206H  
 API WELL NO. \_\_\_\_\_

WELL TYPE: OIL GAS  LIQUID INJECTION \_\_\_\_\_ WASTE DISPOSAL \_\_\_\_\_  
 (IF "GAS,") PRODUCTION \_\_\_\_\_ STORAGE \_\_\_\_\_ DEEP \_\_\_\_\_ SHALLOW   
 LOCATION: ELEVATION 1137.5' WATERSHED SHORT CREEK  
 DISTRICT RICHLAND COUNTY OHIO  
 QUADRANGLE TILTONSVILLE

SURFACE OWNER S.E.W. TRUST ACREAGE 220.947 +/-  
 OIL & GAS ROYALTY OWNER S.E.W. TRUST, ET AL LEASE ACREAGE 294 +/-  
 LEASE NO. \_\_\_\_\_

PROPOSED WORK: DRILL  CONVERT \_\_\_\_\_ DRILL DEEPER \_\_\_\_\_ REDRILL \_\_\_\_\_ FRACTURE OR STIMULATE  PLUG OFF OLD FORMATION \_\_\_\_\_ PERFORATE NEW FORMATION \_\_\_\_\_ OTHER PHYSICAL CHANGE IN WELL (SPECIFY) \_\_\_\_\_

PLUG AND ABANDON \_\_\_\_\_ CLEAN OUT AND REPLUG \_\_\_\_\_

TARGET FORMATION MARCELLUS ESTIMATED DEPTH \_\_\_\_\_ TVD: 5,800' TMD: 10,999'  
 WELLOPERATOR CHESAPEAKE APPALACHIA, LLC DESIGNATED AGENT ERIC GILLESPIE  
 ADDRESS PO BOX 18496, OKLAHOMA CITY, OK 73154-0496 ADDRESS PO BOX 6070, CHARLESTON, WV 25301

**09/05/2014**

COUNTY NAME PERMIT

F:\UKM\VVW-0