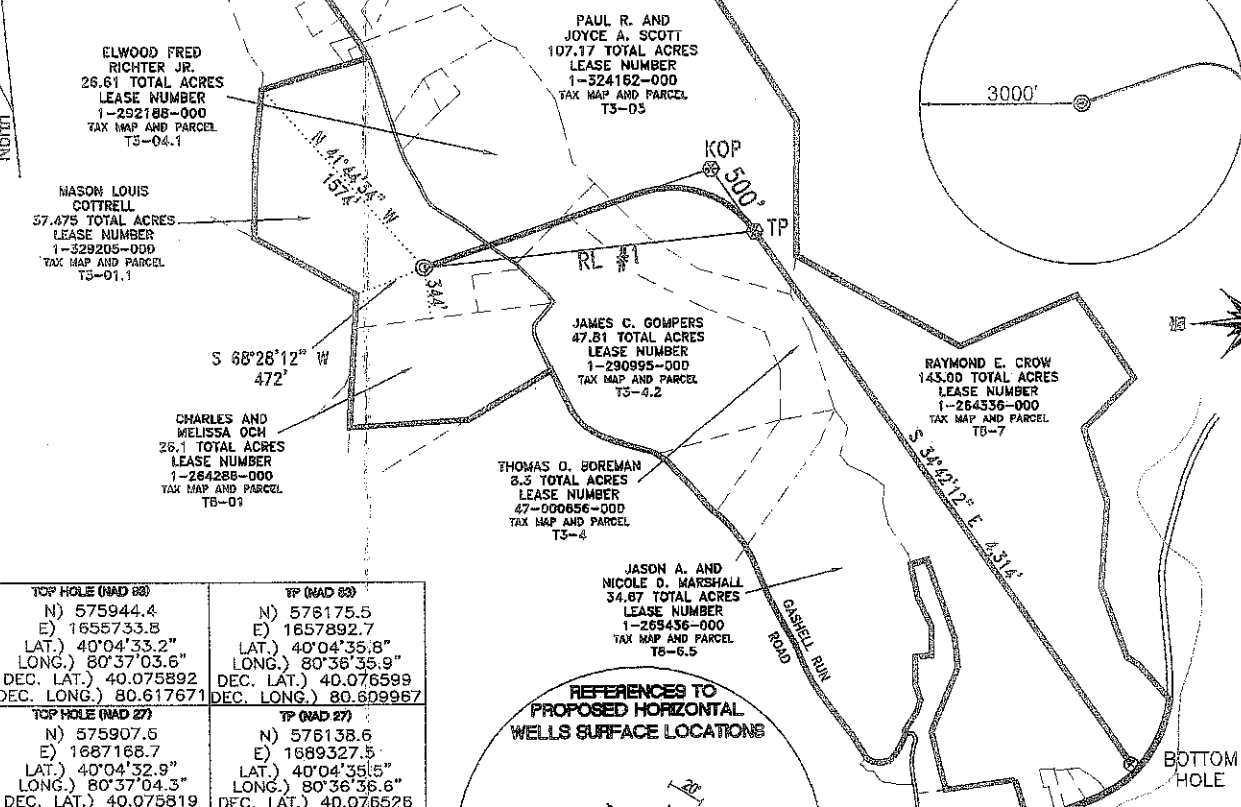
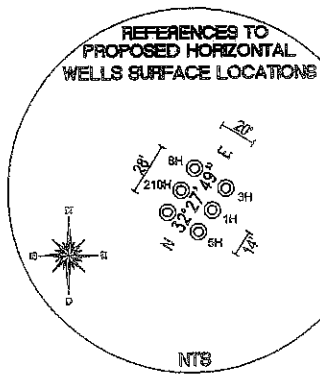
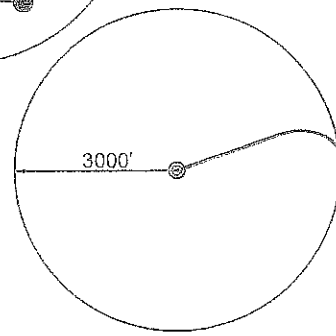
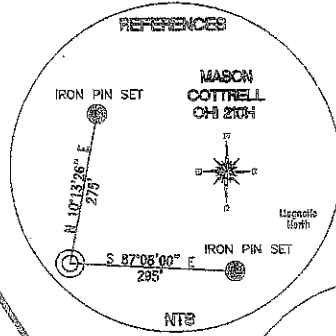


**REFERENCE LINES**  
RL #1  
N 83°53'26" E 2,171'



<b>TOP HOLE (NAD 83)</b> N) 575944.4 E) 1658733.8 LAT.) 40°04'33.2" LONG.) 80°37'03.6" DEC. LAT.) 40.075892 DEC. LONG.) 80.617671	<b>TP (NAD 83)</b> N) 578175.5 E) 1657892.7 LAT.) 40°04'35.8" LONG.) 80°36'35.9" DEC. LAT.) 40.076599 DEC. LONG.) 80.609987
<b>TOP HOLE (NAD 27)</b> N) 575907.5 E) 1687168.7 LAT.) 40°04'32.9" LONG.) 80°37'04.3" DEC. LAT.) 40.075819 DEC. LONG.) 80.617873	<b>TP (NAD 27)</b> N) 576138.6 E) 1689327.5 LAT.) 40°04'35.5" LONG.) 80°36'36.6" DEC. LAT.) 40.076528 DEC. LONG.) 80.610170
<b>KOP (NAD 83)</b> N) 576586.6 E) 1657608.1 LAT.) 40°04'39.8" LONG.) 80°36'39.6" DEC. LAT.) 40.077718 DEC. LONG.) 80.611003	<b>BOTTOM HOLE (NAD 83)</b> N) 572628.6 E) 1660349.0 LAT.) 40°04'01.0" LONG.) 80°36'03.7" DEC. LAT.) 40.066946 DEC. LONG.) 80.601035
<b>KOP (NAD 27)</b> N) 576549.7 E) 1689042.9 LAT.) 40°04'39.5" LONG.) 80°36'40.3" DEC. LAT.) 40.077645 DEC. LONG.) 80.611205	<b>BOTTOM HOLE (NAD 27)</b> N) 572591.7 E) 1691783.8 LAT.) 40°04'00.7" LONG.) 80°36'04.5" DEC. LAT.) 40.066873 DEC. LONG.) 80.601238

<b>TH (UTM-NAD 83)</b> N) 4436250.5 E) 532599.4
<b>BOTTOM HOLE (UTM-NAD 83)</b> N) 4435263.9 E) 534022.3

**REFERENCE NOTES**  
Boundaries as shown taken from deeds, tax maps and field locations. A full boundary survey is not expressed nor implied. All bearings are based on true north. Ownership taken from public records Ohio County, West Virginia FEBRUARY 2011  
State Plane Coordinates & NAD 83 Lat/Long by differential submeter mapping grade GPS  
Drafted by E.A.K.

FILE #: CHE 060  
DRAWING #: 2023  
SCALE: 1"=1200'  
MINIMUM DEGREE OF ACCURACY: 1/200  
PROVEN SOURCE: SUBMETER MAPPING OF ELEVATION: GRADE GPS

I, THE UNDERSIGNED, HEREBY CERTIFY THAT THIS PLAT IS CORRECT TO THE BEST OF MY KNOWLEDGE AND BELIEF AND SHOWS ALL THE INFORMATION REQUIRED BY LAW AND THE REGULATIONS ISSUED AND PRESCRIBED BY THE DEPARTMENT OF ENVIRONMENTAL PROTECTION.  
Signed: \_\_\_\_\_  
L.L.S. #2124 : Ernest J. Benchek III



(+) DENOTES LOCATION OF WELL ON UNITED STATES TOPOGRAPHIC MAPS  
WVDEP  
OFFICE OF OIL & GAS  
601 57TH STREET  
CHARLESTON, WV 25304  
Well Type:  Oil  Waste Disposal  Production  Deep  Gas  Liquid Injection  Storage  Shallow  
WATERSHED: UPPER OHIO SOUTH  
COUNTY/DISTRICT: OHIO/TRIADÉLPHIA  
SURFACE OWNER: MASON LOUIS COTTRELL  
OIL & GAS ROYALTY OWNER: MASON LOUIS COTTRELL  
LEASE NUMBERS: \_\_\_\_\_  
TARGET FORMATION: MARCELLUS  
WELL OPERATOR : CHESAPEAKE APPALACHIA, LLC.  
ADDRESS: PO BOX 18496  
CITY: OKLAHOMA CITY STATE: OK ZIP CODE: 73154-0496

DATE: MARCH 01, 2012  
OPERATOR'S WELL #: MASON COTTRELL OHI 210H  
API WELL #: 47 69 00139HG  
STATE COUNTY PERMIT  
ELEVATION: 1,300'  
QUADRANGLE: VALLEY GROVE WV.  
ACREAGE: 37.475 +/-  
ACREAGE: 573.315 +/-  
DRILL  CONVERT  DRILL DEEPER  REDRILL  FRACTURE OR STIMULATE   
PLUG OFF FORMATION  PERFORATE NEW FORMATION  PLUG & ABANDON   
CLEAN OUT & REPLUG  OTHER CHANGE  (SPECIFY): \_\_\_\_\_  
ESTIMATED DEPTH: TVD: 6,320' TMD: 11,440'  
DESIGNATED AGENT : ERIC B. GILLESPIE  
ADDRESS: Po Box 6070  
CITY: CHARLESTON STATE: WV ZIP CODE: 25301

69-00139

