

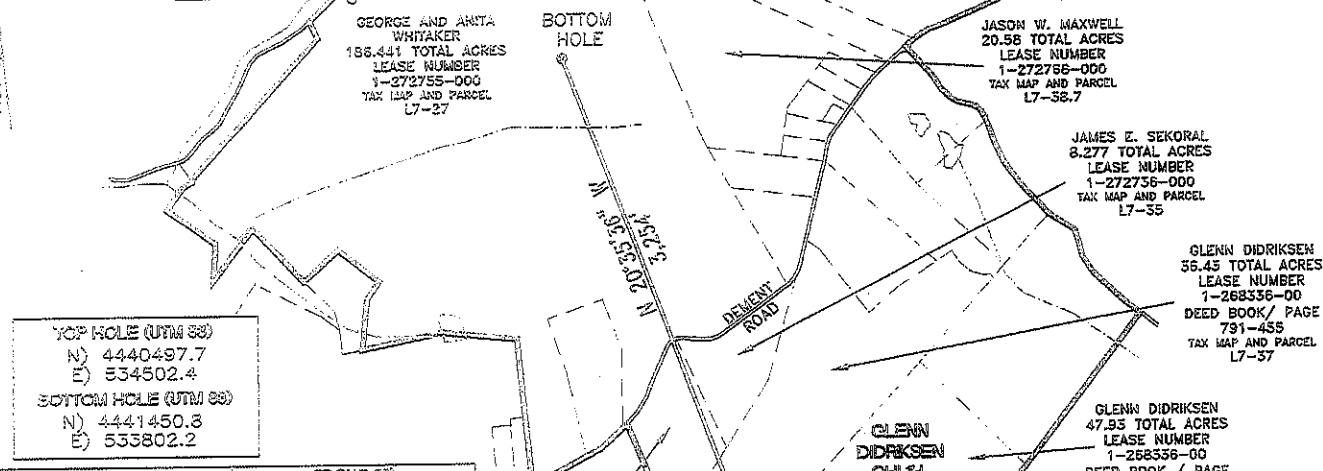
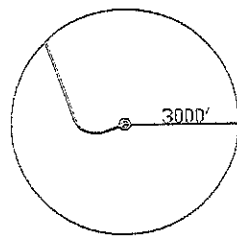
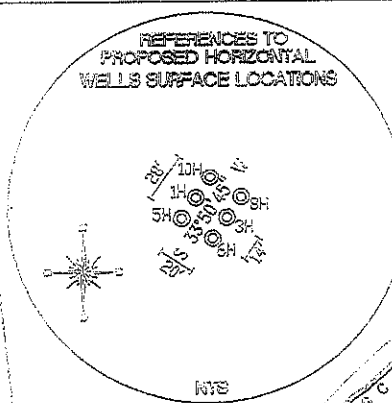
SURFACE HOLE DEC. LONG: 80.595126 SURVEYED LONG: 80° 35' 42.5" 3,300'

Latitude: 40° 07' 30"

Longitude: 80° 35' 00"

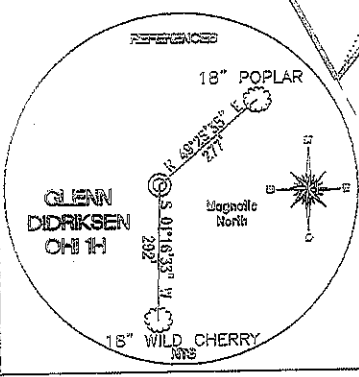
SURFACE HOLE DEC. LAT.: 40.114080 SURVEYED LAT.: 40° 06' 50.7"

REFERENCES TO PROPOSED HORIZONTAL WELLS SURFACE LOCATIONS



YCP HOLE (UTM 83)
N) 4440497.7
E) 534502.4
BOTTOM HOLE (UTM 83)
N) 4441450.3
E) 533802.2

TP (NAD 83) N) 589777.2 E) 1662212.0 LAT.) 40°06'50.7" LONG.) 80°35'42.5" DEC. LAT.) 40.114080 DEC. LONG.) 80.595126	TP (NAD 83) N) 589897.6 E) 1661111.0 LAT.) 40°06'51.7" LONG.) 80°35'56.6" DEC. LAT.) 40.114374 DEC. LONG.) 80.599068
TP (NAD 27) N) 589740.2 E) 1893646.7 LAT.) 40°06'50.4" LONG.) 80°35'43.2" DEC. LAT.) 40.114008 DEC. LONG.) 80.595330	TP (NAD 27) N) 589860.7 E) 1692545.7 LAT.) 40°06'51.5" LONG.) 80°35'57.4" DEC. LAT.) 40.114301 DEC. LONG.) 80.599271
KOP (NAD 83) N) 589429.6 E) 1661286.9 LAT.) 40°06'47.1" LONG.) 80°35'54.3" DEC. LAT.) 40.113095 DEC. LONG.) 80.598413	BOTTOM HOLE (NAD 83) N) 592943.4 E) 1659966.6 LAT.) 40°07'21.7" LONG.) 80°36'11.9" DEC. LAT.) 40.122696 DEC. LONG.) 80.603293
KOP (NAD 27) N) 589392.6 E) 1692721.6 LAT.) 40°06'46.9" LONG.) 80°35'55.0" DEC. LAT.) 40.113023 DEC. LONG.) 80.598622	BOTTOM HOLE (NAD 27) N) 592906.5 E) 1691401.3 LAT.) 40°07'21.4" LONG.) 80°36'12.6" DEC. LAT.) 40.122623 DEC. LONG.) 80.603496



REFERENCE LINES
RL #1
N 83°45'25" W 1108'

REFERENCE NOTES
Boundaries as shown taken from deeds, tax maps and field locations. A full boundary survey is not expressed nor implied. All bearings are based on true north. Ownership taken from public records Ohio County, West Virginia NOVEMBER 2011 State Plane Coordinates & NAD 83 Lat/Long by differential submeter mapping grade GPS Drafted by: E.A.M.

FILE #: CHE 020
DRAWING #: 1905
SCALE: 1"=1200'
MINIMUM DEGREE OF ACCURACY: 1/200
PROVEN SOURCE: SUBMETER MAPPING OF ELEVATION: GRADE GPS

I, THE UNDERSIGNED, HEREBY CERTIFY THAT THIS PLAT IS CORRECT TO THE BEST OF MY KNOWLEDGE AND BELIEF AND SHOWS ALL THE INFORMATION REQUIRED BY LAW AND THE REGULATIONS ISSUED AND PRESCRIBED BY THE DEPARTMENT OF ENVIRONMENTAL PROTECTION.

Signed:
L.L.S. #2124: Ernest J. Benchek III

DATE: DECEMBER 08, 2011
OPERATOR'S WELL #: GLENN DIDRIKSEN OHI 1H
API WELL #: 47 69 00123H6A
STATE COUNTY PERMIT

(+) DENOTES LOCATION OF WELL ON UNITED STATES TOPOGRAPHIC MAPS WVDEP
OFFICE OF OIL & GAS
601 57TH STREET
CHARLESTON, WV 25304

Well Type: Oil Waste Dipsal Production Deep
 Gas Liquid Injection Storage Shallow

WATERSHED: UPPER OHIO SOUTH
COUNTY/DISTRICT: OHIO/LIBERTY
SURFACE OWNER: GLENN DIDRIKSEN
OIL & GAS ROYALTY OWNER: GLENN DIDRIKSEN
LEASE NUMBERS:

ELEVATION: 1,380'
QUADRANGLE: VALLEY GROVE WV.
ACREAGE: 47.93 +/-
ACREAGE: 280.428 +/-

DRILL CONVERT DRILL DEEPER REDRILL FRACTURE OR STIMULATE
PLUG OFF FORMATION PERFORATE NEW FORMATION PLUG & ABANDON
CLEAN OUT & REPLUG OTHER CHANGE (SPECIFY):

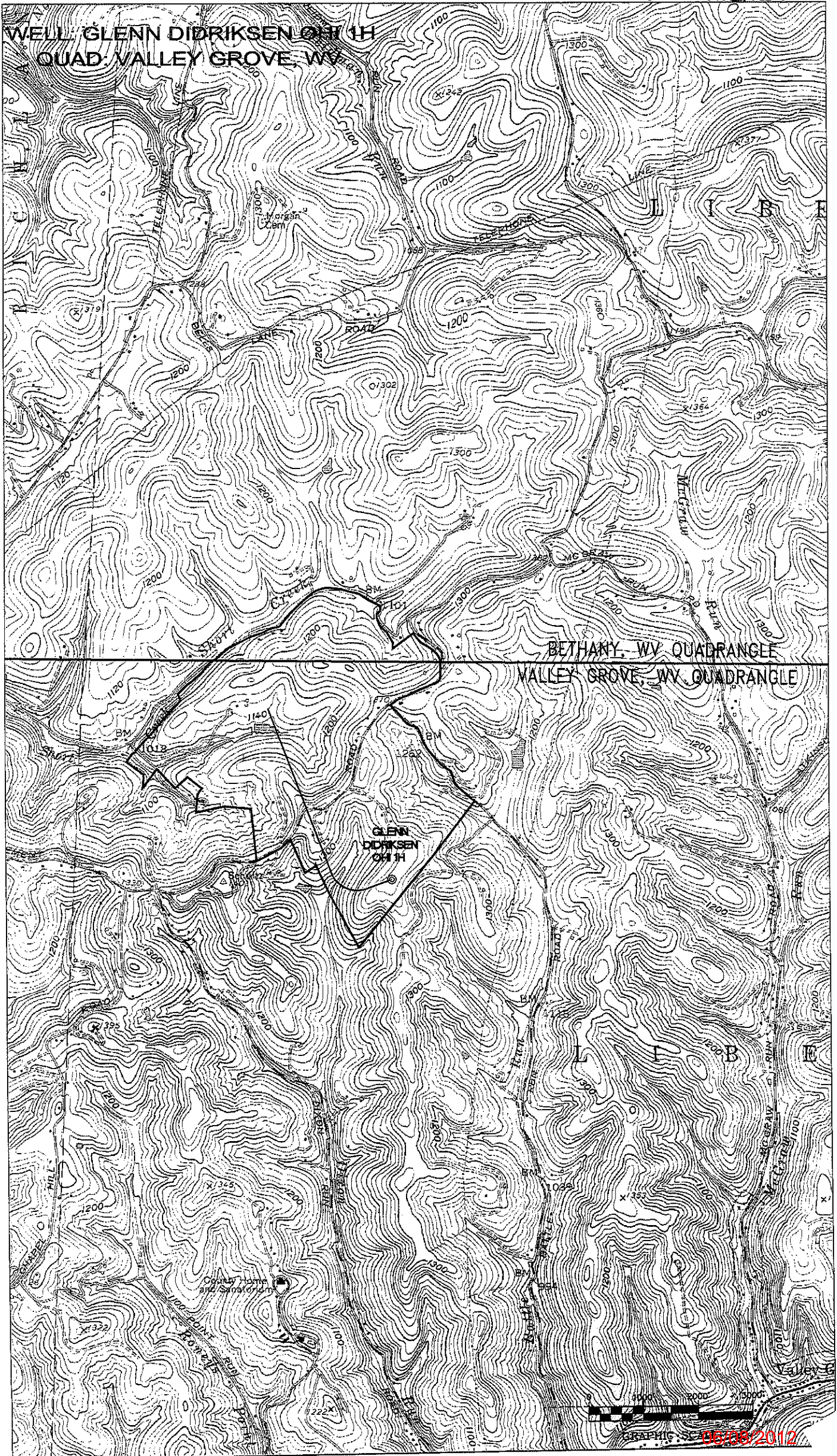
TARGET FORMATION: MARCELLUS
WELL OPERATOR: CHESAPEAKE APPALACHIA, LLC.
ADDRESS: PO BOX 18496
CITY: OKLAHOMA CITY STATE: OK ZIP CODE: 73154-0496

ESTIMATED DEPTH: TVD: 6,400' TMD: 10,048'
DESIGNATED AGENT: ERIC B. GILLESPIE
ADDRESS: PO Box 6070
CITY: CHARLESTON STATE: WV ZIP CODE: 25301

06/08/2012

69-00123H6A

WELL: GLENN DIDRIKSEN OH 1H
QUAD: VALLEY GROVE, WV



BETHANY, WV QUADRANGLE
VALLEY GROVE, WV QUADRANGLE

GLENN
DIDRIKSEN
OH 1H



05/26/2012