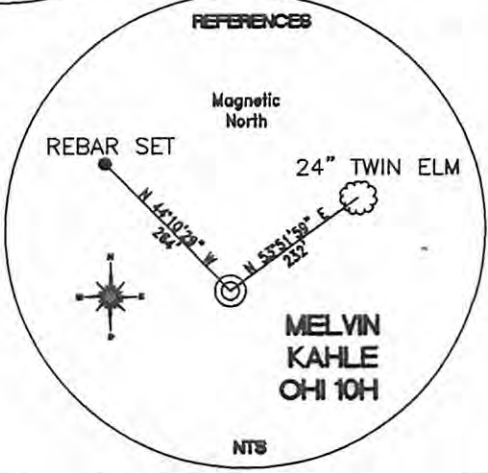
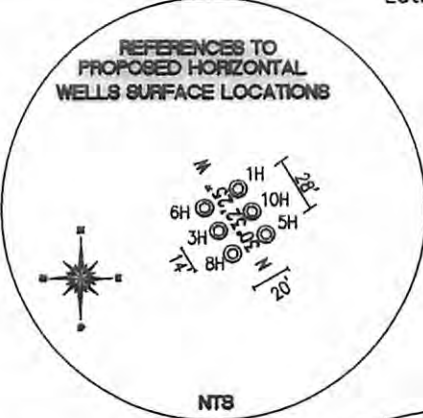


**TOP HOLE (UTM 89)**  
 N) 4435804.1  
 E) 531956.5  
**BOTTOM HOLE (UTM 89)**  
 N) 4434787.4  
 E) 532622.7

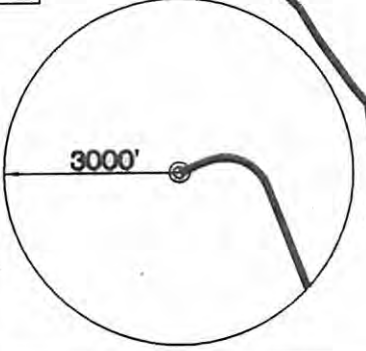


MELVIN W AND CAROL M KAHLE  
 84.99 TOTAL ACRES  
 LEASE NUMBER 1-324684-000  
 TAX MAP AND PARCEL T7-170

MARY A DICKEY  
 99.95 TOTAL ACRES  
 LEASE NUMBER 1-268375-000  
 TAX MAP AND PARCEL T7-171

**REFERENCE LINES**  
 RL #1  
 S 80°05'20" E 923'

**REFERENCE NOTES**  
 Boundaries as shown taken from deeds, tax maps and field locations. A full boundary survey is not expressed nor implied. All bearings are based on true north. Ownership taken from public records Ohio County, West Virginia NOVEMBER 2011 State Plane Coordinates & NAD 83 Lat/Long by differential submeter mapping grade GPS Drafted by: E.A.M.



<b>TOP HOLE (NAD 89)</b> N) 574514.7 E) 1653599.7 LAT.) 40°04'18.8" LONG.) 80°37'30.8" DEC. LAT.) 40.071894 DEC. LONG.) 80.625233	<b>KOP (NAD 89)</b> N) 574823.2 E) 1654331.6 LAT.) 40°04'22.0" LONG.) 80°37'21.5" DEC. LAT.) 40.072766 DEC. LONG.) 80.622631
<b>TOP HOLE (NAD 27)</b> N) 574477.9 E) 1685034.7 LAT.) 40°04'18.6" LONG.) 80°37'31.6" DEC. LAT.) 40.071821 DEC. LONG.) 80.625434	<b>KOP (NAD 27)</b> N) 574786.4 E) 1685766.6 LAT.) 40°04'21.7" LONG.) 80°37'22.2" DEC. LAT.) 40.072693 DEC. LONG.) 80.622833
<b>TP (NAD 89)</b> N) 574355.8 E) 1654509.2 LAT.) 40°04'17.4" LONG.) 80°37'19.1" DEC. LAT.) 40.071489 DEC. LONG.) 80.621976	<b>BOTTOM HOLE (NAD 89)</b> N) 571141.7 E) 1655730.1 LAT.) 40°03'45.7" LONG.) 80°37'02.9" DEC. LAT.) 40.062708 DEC. LONG.) 80.617471
<b>TP (NAD 27)</b> N) 574319.0 E) 1685944.1 LAT.) 40°04'17.1" LONG.) 80°37'19.8" DEC. LAT.) 40.071416 DEC. LONG.) 80.622178	<b>BOTTOM HOLE (NAD 27)</b> N) 571104.8 E) 1687165.0 LAT.) 40°03'45.5" LONG.) 80°37'03.6" DEC. LAT.) 40.062635 DEC. LONG.) 80.617673

FILE #: CHE 035  
 DRAWING #: 1926  
 SCALE: 1"=1000'  
 MINIMUM DEGREE OF ACCURACY: 1/200  
 PROVEN SOURCE SUBMETER MAPPING OF ELEVATION: GRADE GPS

I, THE UNDERSIGNED, HEREBY CERTIFY THAT THIS PLAT IS CORRECT TO THE BEST OF MY KNOWLEDGE AND BELIEF AND SHOWS ALL THE INFORMATION REQUIRED BY LAW AND THE REGULATIONS ISSUED AND PRESCRIBED BY THE DEPARTMENT OF ENVIRONMENTAL PROTECTION.  
 Signed:   
 L.L.S. #2124 : Ernest J. Benchek III



(+) DENOTES LOCATION OF WELL ON UNITED STATES TOPOGRAPHIC MAPS  
**WVDEP OFFICE OF OIL & GAS**  
 601 57TH STREET  
 CHARLESTON, WV 25304

Well Type:  Oil  Waste Dposal  Production  Deep  
 Gas  Liquid Injection  Storage  Shallow

WATERSHED: UPPER OHIO SOUTH ELEVATION : 1,280'  
 COUNTY/DISTRICT: OHIO/TRIADELPHIA QUADRANGLE: WHEELING WV.  
 SURFACE OWNER: MELVIN W AND CAROL M KAHLE ACREAGE: 84.99 +/-  
 OIL & GAS ROYALTY OWNER: MELVIN W AND CAROL M KAHLE ACREAGE: 184.94 +/-  
 LEASE NUMBERS: \_\_\_\_\_

DRILL  CONVERT  DRILL DEEPER  REDRILL  FRACTURE OR STIMULATE   
 PLUG OFF FORMATION  PERFORATE NEW FORMATION  PLUG & ABANDON   
 CLEAN OUT & REPLUG  OTHER CHANGE  (SPECIFY): \_\_\_\_\_

TARGET FORMATION: MARCELLUS ESTIMATED DEPTH: TVD: 6.265' TMD: 10.056'  
 WELL OPERATOR : CHESAPEAKE APPALACHIA, LLC. DESIGNATED AGENT : ERIC B. GILLESPIE  
 ADDRESS: PO BOX 18496 ADDRESS: Po Box 6070  
 CITY: OKLAHOMA CITY STATE: OK ZIP CODE: 73154-0496 CITY: CHARLESTON STATE: WV 06/20/2014

**CANCELLED**