

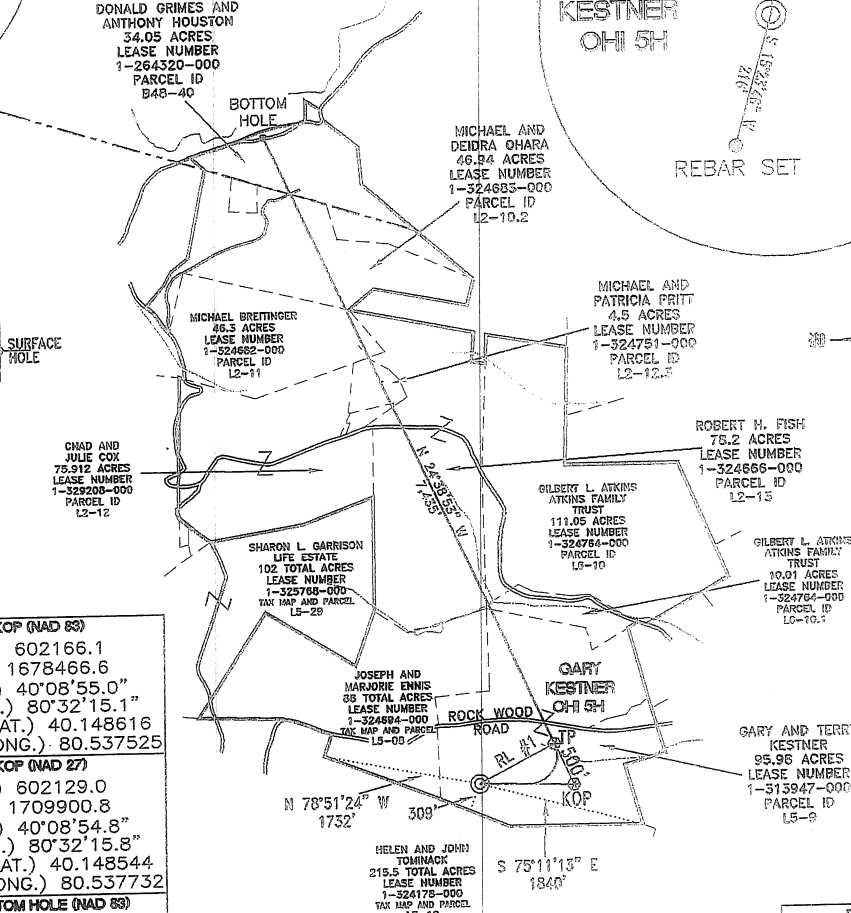
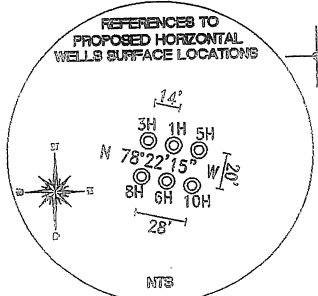
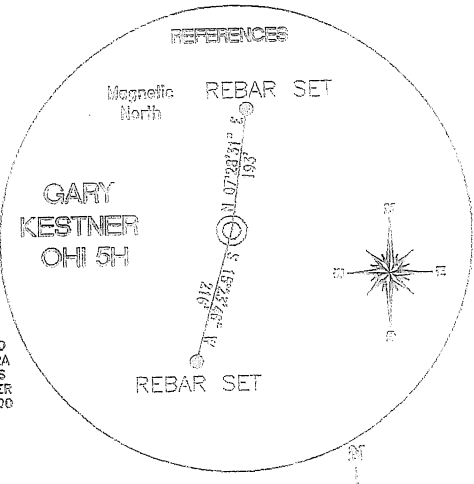
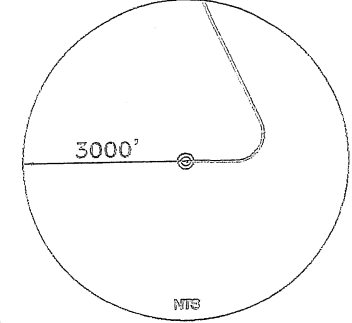
SURFACE HOLE DEC. LONG: 80.541201
 SURVEYED LONG: 80° 32' 28.5"

11,480

Latitude: 40° 10' 00"

Longitude: 80° 30' 00"

TOP HOLE (UTM 69)
 N) 4444362.4
 E) 539391.0
 BOTTOM HOLE (UTM 69)
 N) 4446466.6
 E) 548026.1



TOP HOLE (NAD 83) N) 602190.6 E) 1677439.2 LAT.) 40°08'55.1" LONG.) 80°32'28.3" DEC. LAT.) 40.148651 DEC. LONG.) 80.541201	KOP (NAD 83) N) 602166.1 E) 1678466.6 LAT.) 40°08'55.0" LONG.) 80°32'15.1" DEC. LAT.) 40.148616 DEC. LONG.) 80.537525
TOP HOLE (NAD 27) N) 602153.5 E) 1708873.4 LAT.) 40°08'54.9" LONG.) 80°32'29.1" DEC. LAT.) 40.148579 DEC. LONG.) 80.541408	KOP (NAD 27) N) 602129.0 E) 1709900.8 LAT.) 40°08'54.8" LONG.) 80°32'15.8" DEC. LAT.) 40.148544 DEC. LONG.) 80.537732
TP (NAD 83) N) 602620.6 E) 1678258.0 LAT.) 40°08'59.5" LONG.) 80°32'17.8" DEC. LAT.) 40.149857 DEC. LONG.) 80.538290	BOTTOM HOLE (NAD 83) N) 609377.1 E) 1675157.8 LAT.) 40°10'05.9" LONG.) 80°32'58.8" DEC. LAT.) 40.168304 DEC. LONG.) 80.549662
TP (NAD 27) N) 602583.5 E) 1709692.3 LAT.) 40°08'59.2" LONG.) 80°32'18.6" DEC. LAT.) 40.149785 DEC. LONG.) 80.538497	BOTTOM HOLE (NAD 27) N) 609340.0 E) 1706592.1 LAT.) 40°10'05.6" LONG.) 80°32'59.5" DEC. LAT.) 40.168232 DEC. LONG.) 80.549868

REFERENCE LINES

RL #1	N 62°17'49" E 925'
-------	--------------------

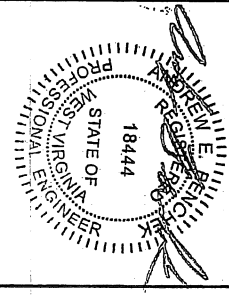
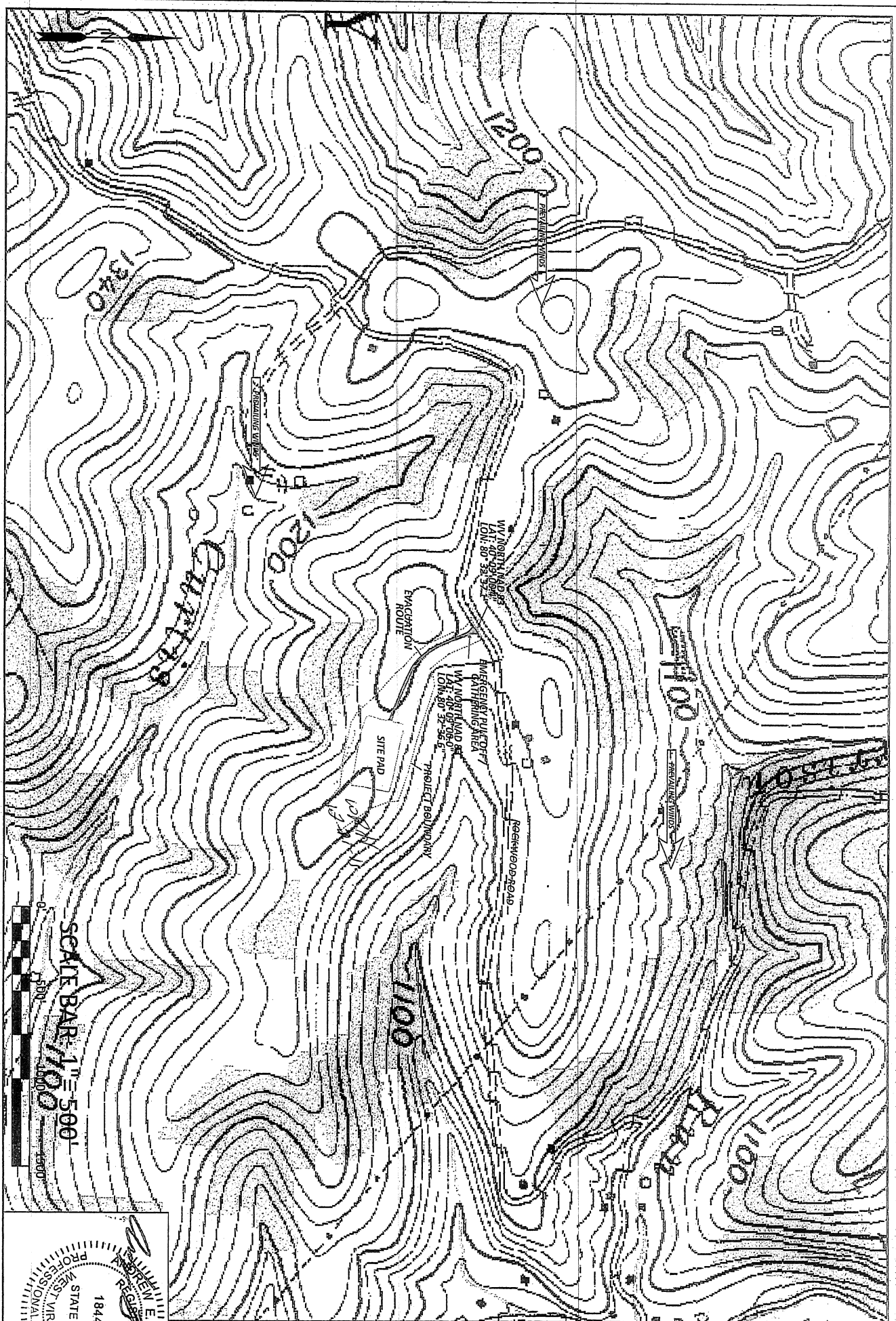
REFERENCE NOTES
 Boundaries as shown taken from deeds, tax maps and field locations. A full boundary survey is not expressed nor implied. All bearings are based on true north. Ownership taken from public records OHIO County, West Virginia FEBRUARY 2011 State Plane Coordinates & NAD 83 Lat/Long by differential submeter mapping grade GPS Drafted by: E.A.M.

FILE #: CHE 049
 DRAWING #: 1857
 SCALE: 1" = 2000'
 MINIMUM DEGREE OF ACCURACY: 1/200
 PROVEN SOURCE SUBMETER MAPPING OF ELEVATION: GRADE GPS

I, THE UNDERSIGNED, HEREBY CERTIFY THAT THIS PLAT IS CORRECT TO THE BEST OF MY KNOWLEDGE AND BELIEF AND SHOWS ALL THE INFORMATION REQUIRED BY LAW AND THE REGULATIONS ISSUED AND PRESCRIBED BY THE DEPARTMENT OF ENVIRONMENTAL PROTECTION.
 Signed:
 L.L.S. #2124: Ernest J. Benchek III

(+) DENOTES LOCATION OF WELL ON UNITED STATES TOPOGRAPHIC MAPS WVDEP
 OFFICE OF OIL & GAS
 601 57TH STREET
 CHARLESTON, WV 25304
 Well Type: Oil Waste Diposal Production Deep
 Gas Liquid Injection Storage Shallow
 WATERSHED: UPPER OHIO SOUTH
 COUNTY/DISTRICT: OHIO / LIBERTY
 SURFACE OWNER: GARY AND TERRY KESTNER
 OIL & GAS ROYALTY OWNER: GARY AND TERRY KESTNER
 LEASE NUMBERS:

DATE: DECEMBER 08, 2011
 OPERATOR'S WELL #: GARY KESTNER OHI 5H
 API WELL #: 47 69 00121 H
 STATE COUNTY PERMIT
 H/A
 ELEVATION: 1,290'
 QUADRANGLE: BETHANY, WV
 ACREAGE: 95.98 +/-
 ACREAGE: 486.22 +/-
 DRILL CONVERT DRILL DEEPER REDRILL FRACTURE OR STIMULATE
 PLUG OFF FORMATION PERFORATE NEW FORMATION PLUG & ABANDON
 CLEAN OUT & REPLUG OTHER CHANGE (SPECIFY):
 TARGET FORMATION: MARCELLUS ESTIMATED DEPTH: TVD: 6,450' TMD: 14,288'
 WELL OPERATOR: CHESAPEAKE APPALACHIA, LLC. DESIGNATED AGENT: ERIC GILLESPIE
 ADDRESS: PO BOX 18496 ADDRESS: PO BOX 6070
 CITY: OKLAHOMA CITY STATE: OK ZIP CODE: 73154-0496 CITY: CHARLESTON STATE: WV ZIP CODE: 25301



DATE: 12/2011
 GARY KESTNER O.H.
 LIBERTY DISTRICT
 OHIO COUNTY
 WV

EMERGENCY ROUTE / PREVAILING WINDS SHEET
 THIS DOCUMENT WAS PREPARED BY:
 BOORD, BENCHEK AND ASSOC., INC.
 FOR: CHESAPEAKE APPALACHIA, LLC.

BOORD, BENCHEK and ASSOC., INC.
 Engineering, Surveying, Construction,
 and Mining Services
 Southpointe, PA 15317 Phone: 724-746-1055

SHEET #2