

LATITUDE 40°10'00"

LONGITUDE 80°37'30"

TOP HOLE (NAD 27)
 N: 607120.4
 E: 1664890.6
 LAT: 40°09'41.1"
 LONG: -80°37'36.6"
 DEC. LAT: 40.161421
 DEC. LONG: -80.627055

TOP HOLE (NAD 83)
 N: 607157.3
 E: 1653555.7
 LAT: 40°09'41.4"
 LONG: -80°37'36.6"
 DEC. LAT: 40.161493
 DEC. LONG: -80.626855

BOTTOM HOLE (NAD 27)
 N: 602171.9
 E: 1664832.6
 LAT: 40°09'52.2"
 LONG: -80°37'37.3"
 DEC. LAT: 40.147836
 DEC. LONG: -80.627040

BOTTOM HOLE (NAD 83)
 N: 602208.8
 E: 1653497.7
 LAT: 40°09'52.5"
 LONG: -80°37'36.6"
 DEC. LAT: 40.147908
 DEC. LONG: -80.626838

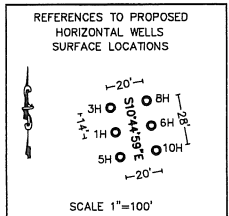
REFERENCES LINES
 RL #1 S53°23'06"W 1208.30'
 RL #2 S77°49'44"W 1100.00'

K.O.P. (NAD 27)
 N: 606888.5
 E: 1663915.3
 LAT: 40°09'38.7"
 LONG: -80°37'49.8"
 DEC. LAT: 40.160747
 DEC. LONG: -80.630891

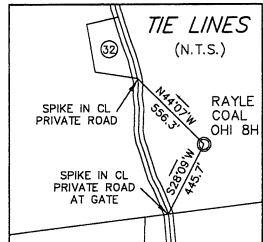
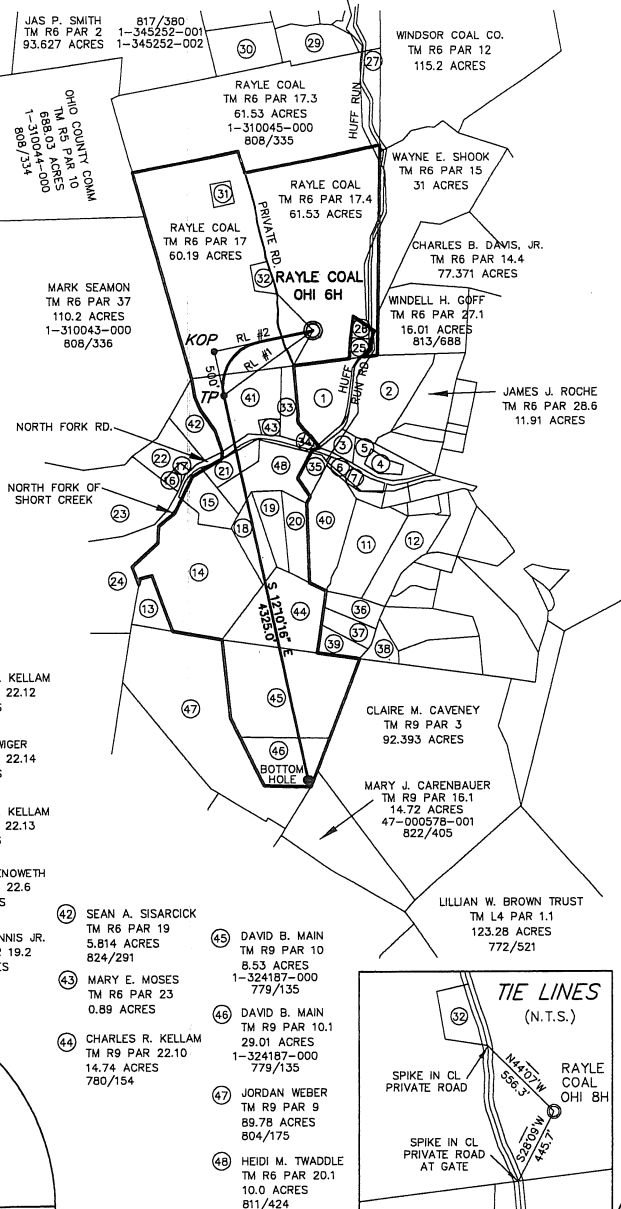
K.O.P. (NAD 83)
 N: 606925.4
 E: 1652480.4
 LAT: 40°09'38.9"
 LONG: -80°37'50.5"
 DEC. LAT: 40.160819
 DEC. LONG: -80.630689

TP (NAD 27)
 N: 606399.7
 E: 1664020.8
 LAT: 40°09'33.9"
 LONG: -80°37'49.8"
 DEC. LAT: 40.159409
 DEC. LONG: -80.630492

TP (NAD 83)
 N: 606436.6
 E: 1652480.4
 LAT: 40°09'34.1"
 LONG: -80°37'49.0"
 DEC. LAT: 40.159481
 DEC. LONG: -80.630290

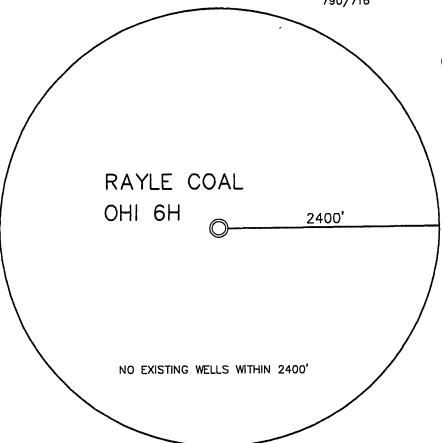
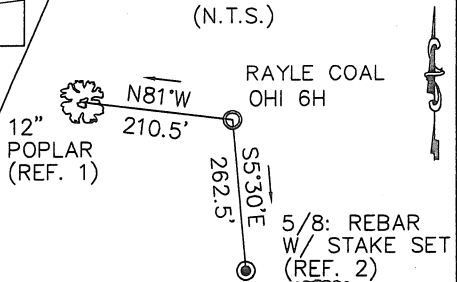


NORTH



- 1 RICHARD A. WOOD, JR.
TM R6 PAR 24.6
12.153 ACRES
1-321840-000
811/420
- 2 WINDELL GOFF
TM R6 PAR 24.3
15.423 ACRES
1-325767-000
813/682
- 3 RANDALL L. CRABTREE
TM R6 PAR 24
2.89 ACRES
- 4 LUTHER SMITH JR.
TM R6 PAR 39
0.344 ACRES
47-000614-000
825/438
- 5 LESLIE A. HUNT
TM R6 PAR 29
5.166 ACRES
- 6 JOHN D. CRUPE
TM R6 PAR 38
0.9 ACRES
- 7 ROBERT W. OCHSENBEIN
TM R6 PAR 39.3
0.558 ACRES
- 11 JAMES L. WEST SR.
TM R9 PAR 22.7
10.85 ACRES
822/366
- 12 NICHOLAS P. KLAMUT
TM R9 PAR 22.8
9.15 ACRES
1-325449-000
812/254
- 13 HELEN M. PERRY
TM R9 PAR 14.1
3.0 ACRES
- 14 KENNETH L. STEVENS
TM R9 PAR 22.2
27.58 ACRES
1-325549-000
814/710
- 15 PHILLIP E. COSS
TM R9 PAR 22.1
5.502 ACRES
- 16 PAMELA S. LOUGH
TM R6 PAR 19.1
0.632 ACRES
- 17 TODD JAMES
TM R6 PAR 19.3
0.321 ACRES
- 18 LLOYD F. COTTRELL
TM R9 PAR 22.3
5.3 ACRES
1-325560-000
814/654
- 19 LLOYD F. COTTRELL
TM R9 PAR 22.4
4.45 ACRES
1-325553-000
814/697
- 20 JASON D. MASON
TM R9 PAR 22.5
4.98 ACRES
- 21 ROGER SPARKS
TM R6 PAR 20
3.577 ACRES
829/465
- 22 LUKE SISARCICK
TM R6 PAR 19.4
5.814 ACRES
- 23 MARK SEAMON
TM R6 PAR 37.1
30.25 ACRES
- 24 HELEN M. PERRY
TM R9 PAR 14.2
8.479 ACRES
- 25 WINDSOR COAL CO.
TM R6 PAR 25
1.5 ACRES
- 26 JOSEPH G. BRYAN ET AL
TM R6 PAR 17.1
1.0 ACRES
822/418
- 27 GARY HERCULES
TM R6 PAR 16
1.25 ACRES
- 28 GARY HERCULES
TM R6 PAR 5
4.7 ACRES
- 30 GARY HERCULES
TM R6 PAR 4.1
7.0 ACRES
- 31 WEIRTON NATIONAL BANK
TM R6 PAR 17.5
1.339 ACRES
1-357177-000
826/436
- 32 RAYLE COAL CO.
TM R6 PAR 17.2
1.58 ACRES
1-310039-000
808/333
- 33 EDITH M. WOOD
TM R6 PAR 22
4.175 ACRES
1-321903-000
811/297
- 34 GWENDOLYN GODDARD
TM R6 PAR 24.5
0.204 ACRES
1-32009-000
812/5
- 35 HEIDI M. TWADDLE
TM R6 PAR 21
2.0 ACRES
811/792
- 36 CHARLES R. KELLAM
TM R9 PAR 22.11
3.27 ACRES
780/154

REFERENCES



- NOTES:
- TIES TO WELLS AND CORNERS ARE BASED ON GRID NORTH FOR THE WEST VIRGINIA STATE PLANE COORDINATE SYSTEM, NORTH ZONE NAD 27.
 - WELL LOCATION REFERENCES ARE BASED ON MAGNETIC MERIDIAN.
 - BOUNDARIES SHOWN HEREON DERIVED FROM DEEDS, TAX MAPS AND FIELD LOCATION AND ARE NOT INTENDED TO INFER A BOUNDARY SURVEY.
 - SURFACE OWNERSHIP INFORMATION TAKEN FROM THE ASSESSOR AND COUNTY CLERK RECORDS OF OHIO COUNTY IN APRIL 2011.
 - WELL COORDINATES ESTABLISHED BY SUBFOOT GPS UNIT.

(+) DENOTES LOCATION OF WELL ON UNITED STATES TOPOGRAPHIC MAPS

FILE NO. 11-0167-782
 DRAWING NO. _____
 SCALE 1" = 2000'
 MINIMUM DEGREE OF ACCURACY 1 IN 2500
 PROVEN SOURCE OF ELEVATION GPS
 SUBFOOT UNIT _____

I THE UNDERSIGNED, HEREBY CERTIFY THAT THIS PLAT IS CORRECT TO THE BEST OF MY KNOWLEDGE AND BELIEF AND SHOWS ALL THE INFORMATION REQUIRED BY LAW AND THE REGULATIONS ISSUED AND PRESCRIBED BY THE DEPARTMENT OF ENVIRONMENTAL PROTECTION.
 (SIGNED) _____
 R.P.E. _____ P.S. _____



STATE OF WEST VIRGINIA
 DEPARTMENT OF ENVIRONMENTAL PROTECTION
 OIL AND GAS DIVISION



DATE NOVEMBER 14, 20 11
 OPERATOR'S WELL NO. RAYLE COAL OHI 6H
 API WELL NO. _____

WELL TYPE: OIL GAS LIQUID INJECTION WASTE DISPOSAL
 (IF "GAS,") PRODUCTION STORAGE DEEP SHALLOW X
 LOCATION: ELEVATION 1064' WATERSHED HUFF RUN
 DISTRICT RICHLAND COUNTY OHIO

SURFACE OWNER RAYLE COAL COMPANY ACREAGE 61.53 ACRES +/-
 OIL & GAS ROYALTY OWNER RAYLE COAL COMPANY, ET AL LEASE ACREAGE 259.3 ACRES +/-

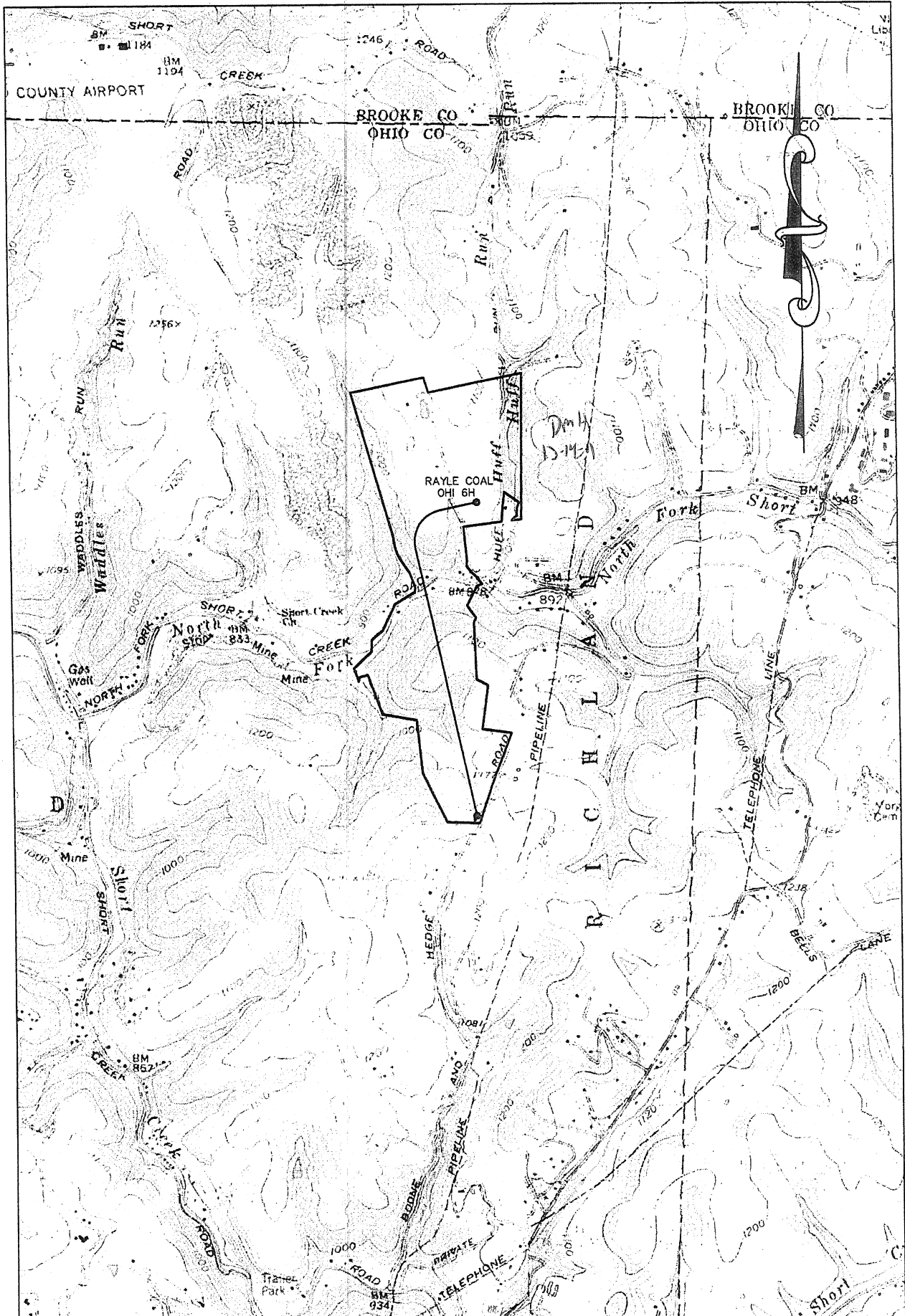
PROPOSED WORK: DRILL X CONVERT DRILL DEEPER REDRILL FRACTURE OR STIMULATE X PLUG OFF OLD FORMATION PERFORATE NEW FORMATION OTHER PHYSICAL CHANGE IN WELL (SPECIFY) _____

PLUG AND ABANDON CLEAN OUT AND REPLUG
 TARGET FORMATION MARCELLUS ESTIMATED DEPTH TVD: 5,814' TMD: 11,100'
 WELL OPERATOR CHESAPEAKE APPALACHIA, LLC DESIGNATED AGENT ERIC GILLESPIE
 ADDRESS PO BOX 18496, OKLAHOMA CITY, OK 73154-0496 ADDRESS PO BOX 6070, CHARLESTON, WV 25301

COUNTY NAME PERMIT

FORM WV-6

69-0011714



WELL: RAYLE COAL OHI 6H
 QUAD: TILTONSVILLE WV

RECEIVED
 Office of Oil & Gas

GRAPHIC SCALE



DEC 21 2011

WV Department of
 Environmental Protection

06/01/2012