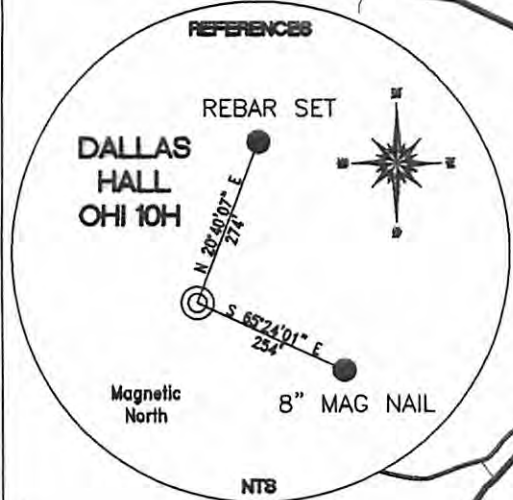


TOP HOLE (UTM 88)
N) 4442626.7
E) 532978.4
BOTTOM HOLE (UTM 88)
N) 4441453.0
E) 533782.2

REFERENCE LINES
S 88°31'43" E 1240'



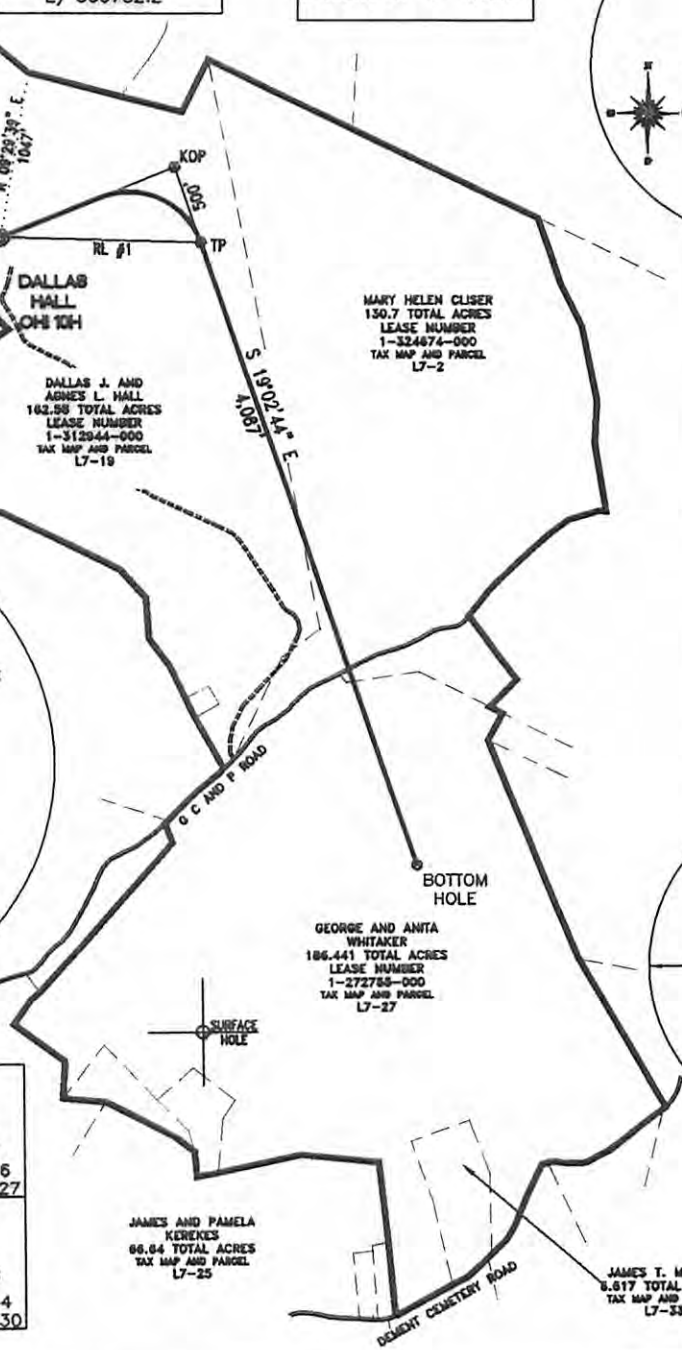
TOP HOLE 04AD 88
N) 596847.5
E) 1657328.1
LAT.) 40°08'00.0"
LONG.) 80°36'46.4"
DEC. LAT.) 40.133323
DEC. LONG.) 80.612900

TOP HOLE 04AD 87
N) 596810.6
E) 1688762.9
LAT.) 40°07'59.7"
LONG.) 80°36'47.2"
DEC. LAT.) 40.133251
DEC. LONG.) 80.613102

KOP 04AD 88
N) 597288.3
E) 1658404.1
LAT.) 40°08'04.4"
LONG.) 80°36'32.7"
DEC. LAT.) 40.134569
DEC. LONG.) 80.609071

KOP 04AD 87
N) 597251.3
E) 1689838.9
LAT.) 40°08'04.2"
LONG.) 80°36'33.4"
DEC. LAT.) 40.134497
DEC. LONG.) 80.609274

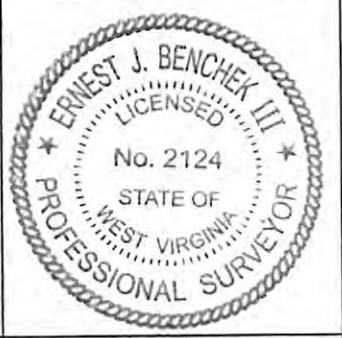
TP 04AD 88 N) 596815.6 E) 1658567.3 LAT.) 40°07'59.8" LONG.) 80°36'30.5" DEC. LAT.) 40.133278 DEC. LONG.) 80.608467	BOTTOM HOLE 04AD 88 N) 592951.7 E) 1659901.2 LAT.) 40°07'21.8" LONG.) 80°36'12.7" DEC. LAT.) 40.122716 DEC. LONG.) 80.603527
TP 04AD 87 N) 596778.7 E) 1690002.1 LAT.) 40°07'59.5" LONG.) 80°36'31.2" DEC. LAT.) 40.133205 DEC. LONG.) 80.608670	BOTTOM HOLE 04AD 87 N) 592914.8 E) 1691336.0 LAT.) 40°07'21.5" LONG.) 80°36'13.4" DEC. LAT.) 40.122644 DEC. LONG.) 80.603730



REFERENCE NOTES
Boundaries as shown taken from deeds, tax maps and field locations. A full boundary survey is not expressed nor implied. All bearings are based on true north. Ownership taken from public records Ohio County, West Virginia DECEMBER 2010 State Plane Coordinates & NAD 83 Lat/Long by differential submeter mapping grade GPS Drafted by EAM

FILE #: CHE 043
DRAWING #: 1547
SCALE: 1"=1200'
MINIMUM DEGREE OF ACCURACY: 1/200
PROVEN SOURCE SUBMETER MAPPING OF ELEVATION: GRADE GPS

I, THE UNDERSIGNED, HEREBY CERTIFY THAT THIS PLAT IS CORRECT TO THE BEST OF MY KNOWLEDGE AND BELIEF AND SHOWS ALL THE INFORMATION REQUIRED BY LAW AND THE REGULATIONS ISSUED AND PRESCRIBED BY THE DEPARTMENT OF ENVIRONMENTAL PROTECTION.
Signed:
L.L.S. #2124 : Ernest J. Benchek III



(+) DENOTES LOCATION OF WELL ON UNITED STATES TOPOGRAPHIC MAPS
WVDEP OFFICE OF OIL & GAS
601 5TH STREET
CHARLESTON, WV 25304

Well Type: Oil Waste Diposal Production Deep Gas Liquid Injection Storage Shallow

WATERSHED: UPPER OHIO SOUTH ELEVATION: 1,270'
COUNTY/DISTRICT: OHIO/LIBERTY QUADRANGLE: BETHANY WV.
SURFACE OWNER: DALLAS J. AND AGNES L. HALL ACREAGE: 162.58 +/-
OIL & GAS ROYALTY OWNER: DALLAS J. AND AGNES L. HALL ACREAGE: 398.36 +/-
LEASE NUMBERS: _____

DRILL CONVERT DRILL DEEPER REDRILL FRACTURE OR STIMULATE
PLUG OFF FORMATION PERFORATE NEW FORMATION PLUG & ABANDON
CLEAN OUT & REPLUG OTHER CHANGE (SPECIFY): _____

TARGET FORMATION: MARCELLUS ESTIMATED DEPTH: TVD: 6,150' TMD: 10,688'
WELL OPERATOR : CHESAPEAKE APPALACHIA, LLC. DESIGNATED AGENT : ERIC B. GILLESPIE
ADDRESS: PO BOX 18496 ADDRESS: PO BOX 6070
CITY: OKLAHOMA CITY STATE: OK ZIP CODE: 73154-0496 CITY: CHARLESTON STATE: WV ZIP CODE: 25301

DATE: DECEMBER 01, 2011
OPERATOR'S WELL #: DALLAS HALL OHI 10H
API WELL #: 47 69 0011666A
STATE COUNTY PERMIT
CANCELLED
9/6/20/2014