

TOP HOLE (NAD 83)
N: 607171.0
E: 1635531.1
LAT: 40°09'41.5"
LONG: -80°37'36.7"
DEC. LAT: 40.16153
DEC. LONG: -80.628963
UTM N: 4445752
UTM E: 531776

TOP HOLE (NAD 27)
N: 607134.1
E: 1640986.0
LAT: 40°09'41.3"
LONG: -80°37'37.4"
DEC. LAT: 40.161459
DEC. LONG: -80.627064

K.O.P. (NAD 27)
N: 607417.7
E: 1665778.1
LAT: 40°09'44.2"
LONG: -80°37'37.3"
DEC. LAT: 40.162264
DEC. LONG: -80.624251

TP 1 (NAD 27)
N: 605957.9
E: 1665651.1
LAT: 40°09'35.9"
LONG: -80°37'28.9"
DEC. LAT: 40.159982
DEC. LONG: -80.624668

TP 2 (NAD 27)
N: 605928.7
E: 1665550.0
LAT: 40°09'29.4"
LONG: -80°37'30.0"
DEC. LAT: 40.158164
DEC. LONG: -80.625000

TP 3 (NAD 27)
N: 605970.0
E: 1665584.4
LAT: 40°09'25.9"
LONG: -80°37'29.5"
DEC. LAT: 40.157186
DEC. LONG: -80.624847

BOTTOM HOLE (NAD 83)
N: 601044.9
E: 1635597.8
LAT: 40°08'48.1"
LONG: -80°37'09.5"
DEC. LAT: 40.146981
DEC. LONG: -80.619311
UTM N: 4444140
UTM E: 532426

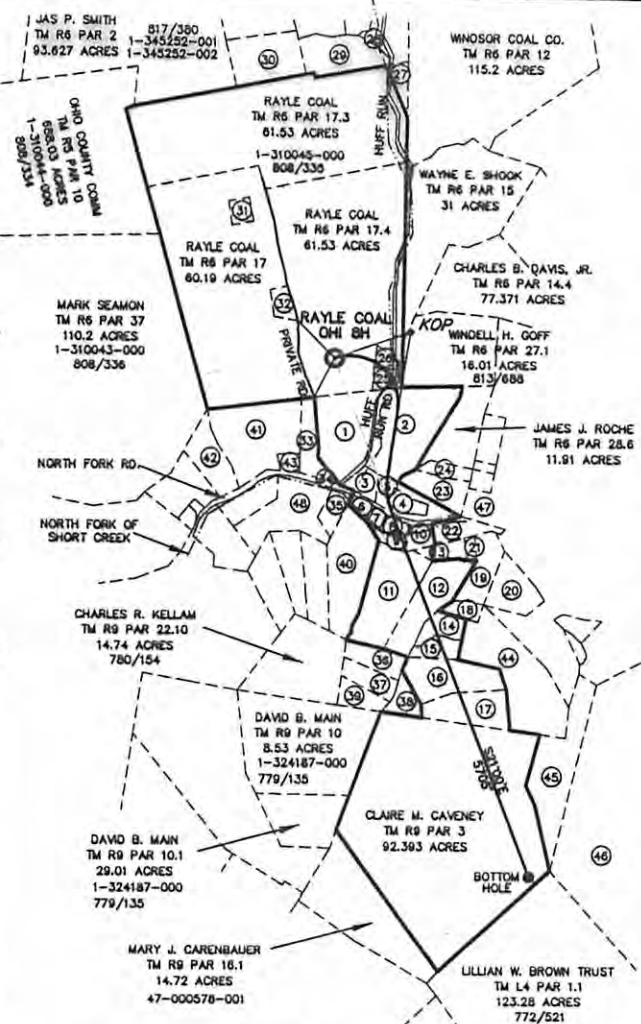
BOTTOM HOLE (NAD 27)
N: 601008.1
E: 1640732.5
LAT: 40°08'48.5"
LONG: -80°37'10.2"
DEC. LAT: 40.146989
DEC. LONG: -80.619513

K.O.P. (NAD 83)
N: 607454.8
E: 1665433.2
LAT: 40°09'44.4"
LONG: -80°37'28.9"
DEC. LAT: 40.162336
DEC. LONG: -80.624469

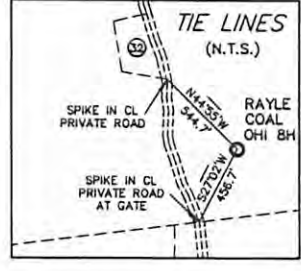
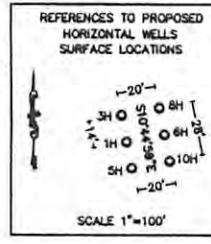
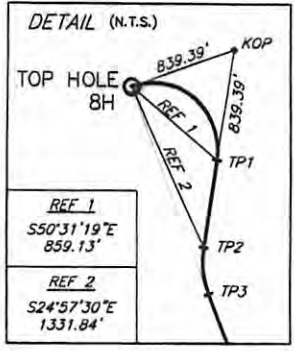
TP 1 (NAD 83)
N: 606924.8
E: 1664216.2
LAT: 40°09'39.2"
LONG: -80°37'28.1"
DEC. LAT: 40.160054
DEC. LONG: -80.624466

TP 2 (NAD 83)
N: 605983.6
E: 1664115.1
LAT: 40°09'29.7"
LONG: -80°37'29.3"
DEC. LAT: 40.158236
DEC. LONG: -80.624798

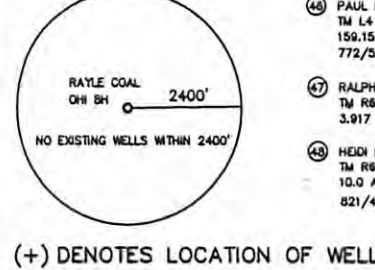
TP 3 (NAD 83)
N: 605968.9
E: 1664153.5
LAT: 40°09'25.1"
LONG: -80°37'28.7"
DEC. LAT: 40.157258
DEC. LONG: -80.624445



- 1 RICHARD A. WOOD, JR.
TM R6 PAR 24.6
12.153 ACRES
1-321840-000
811/420
- 2 WINDELL GOFF
TM R6 PAR 24.3
15.423 ACRES
1-325767-000
813/982
- 3 RANDALL L. CRABTREE
TM R6 PAR 24
2.89 ACRES
- 4 LUTHER R. SMITH JR.
TM R6 PAR 39
0.344 ACRES
47-000814-000
- 5 LESLIE A. HUNT
TM R6 PAR 29
5.166 ACRES
- 6 JOHN D. CRUPE
TM R6 PAR 38
0.9 ACRES
- 7 ROBERT W. OCHSENBEIN
TM R6 PAR 39.3
0.558 ACRES
- 8 CHARLES E. SMITH
TM R6 PAR 39.4
0.931 ACRES
- 9 DANIEL J. STRAND
TM R6 PAR 39.2
1.58 ACRES
- 10 DANIEL J. STRAND
TM R6 PAR 39.1
1.461 ACRES
- 11 JAMES L. WEST SR.
TM R6 PAR 22.7
10.85 ACRES
822/366
- 12 NICHOLAS P. KLAMUT
TM R6 PAR 22.8
9.15 ACRES
1-325449-000
812/254
- 13 KENNETH R. BARNES
TM R6 PAR 19
0.965 ACRES
- 14 JEFFREY C. TAYLOR
TM R6 PAR 22.18
2.67 ACRES
1-325698-000
815/124
- 15 JOHN C. RATCLIFFE
TM R6 PAR 22.17
2.22 ACRES
1-325559-000
814/682
- 16 GREGORY B. WHITE
TM R6 PAR 22.16
7.99 ACRES
- 17 MARK J. SWIGER
TM R6 PAR 22.15
6.09 ACRES
47-000040-000
817/395
- 18 JEFFREY C. TAYLOR
TM R6 PAR 20
1.54 ACRES
1-325706-000
815/158
- 19 LARRY BOYNES
TM R6 PAR 22.9
5.21 ACRES
1-329220-000
814/86
- 20 PHILLIP E. COSS
TM R6 PAR 21.1
4.94 ACRES
1-329366-000
814/82
- 21 VELMA L. TAGGART
TM R6 PAR 18
0.56 ACRES
1-329424-000
814/227
- 22 ROBERT L. JEWELL II
TM R6 PAR 40
2.884 ACRES
1-329865-000
813/705
- 23 DOUGLAS HUDSON
TM R6 PAR 28.7
3.269 ACRES
- 24 DOUGLAS HUDSON
TM R6 PAR 28.3
1.819 ACRES
- 25 WINDSOR COAL CO.
TM R6 PAR 25
1.5 ACRES
- 26 JOSEPH G. BRYAN ET AL
TM R6 PAR 17.1
1.0 ACRES
822/418
- 27 GARY HERCULES
TM R6 PAR 16
1.25 ACRES
- 28 GARY HERCULES
TM R6 PAR 6
0.25 ACRES
- 29 GARY HERCULES
TM R6 PAR 5
4.7 ACRES
- 30 GARY HERCULES
TM R6 PAR 4.1
7.0 ACRES
- 31 WERTON NATIONAL BANK
TM R6 PAR 17.5
1.339 ACRES
- 32 RAYLE COAL CO.
TM R6 PAR 17.2
1.58 ACRES
808/333
- 33 EDITH M. WOOD
TM R6 PAR 22
4.175 ACRES
811/267
- 34 GWENDOLYN GODDARD
TM R6 PAR 24.5
0.204 ACRES
1-322009-000
- 35 HEDI M. THWADDE
TM R6 PAR 21
2.0 ACRES
811/782
- 36 CHARLES R. KELLAM
TM R6 PAR 22.11
3.27 ACRES
780/154

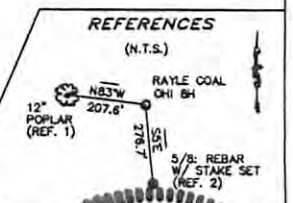


- 37 CHARLES R. KELLAM
TM R6 PAR 22.12
2.88 ACRES
780/154
- 38 MARK J. SWIGER
TM R6 PAR 22.14
2.37 ACRES
817/395
- 39 CHARLES R. KELLAM
TM R6 PAR 22.13
2.48 ACRES
780/154
- 40 RAY J. CHENOWETH
TM R6 PAR 22.6
11.01 ACRES
814/759
- 41 LOUIS J. ENNIS JR.
TM R6 PAR 19.2
15.71 ACRES
790/716
- 42 SEAN A. SISARICK
TM R6 PAR 19
5.814 ACRES
824/291
- 43 MARY E. MOSES
TM R6 PAR 23
0.89 ACRES
- 44 JOHN C. RATCLIFFE
TM R6 PAR 22.20
16.7 ACRES
1-325561-000
814/650
- 45 PAUL M. MCKAY
TM R6 PAR 51
12.325 ACRES
772/521
- 46 PAUL M. MCKAY
TM L4 PAR 1
159.15 ACRES
772/521
- 47 RALPH D. ROBINSON
TM R6 PAR 27
3.917 ACRES
- 48 HEDI M. THWADDE
TM R6 PAR 20.1
10.0 ACRES
821/424



NOTES:

1. TIES TO WELLS AND CORNERS ARE BASED ON GRID NORTH FOR THE WEST VIRGINIA STATE PLANE COORDINATE SYSTEM, NORTH ZONE NAD 27.
2. WELL LOCATION REFERENCES ARE BASED ON MAGNETIC MERIDIAN.
3. BOUNDARIES SHOWN HEREON DERIVED FROM DEEDS, TAX MAPS AND FIELD LOCATION AND ARE NOT INTENDED TO INFER A FULL BOUNDARY SURVEY.
4. SURFACE OWNERSHIP INFORMATION TAKEN FROM THE ASSESSOR AND COUNTY CLERK RECORDS OF OHIO COUNTY IN APRIL 2011.
5. WELL COORDINATES ESTABLISHED BY SUBFOOT GPS UNIT.



FILE NO. 11-0167-782
DRAWING NO. _____
SCALE 1" = 2000'
MINIMUM DEGREE OF ACCURACY 1 IN 2500
PROVEN SOURCE OF ELEVATION GPS
SUBFOOT UNIT

I THE UNDERSIGNED, HEREBY CERTIFY THAT THIS PLAT IS CORRECT TO THE BEST OF MY KNOWLEDGE AND BELIEF AND SHOWS ALL THE INFORMATION REQUIRED BY LAW AND THE REGULATIONS ISSUED AND PRESCRIBED BY THE DEPARTMENT OF ENVIRONMENTAL PROTECTION.
(SIGNED) Victor M. Dawson
R.P.E. _____ P.S. 956



STATE OF WEST VIRGINIA
DEPARTMENT OF ENVIRONMENTAL PROTECTION
OIL AND GAS DIVISION

DATE NOVEMBER 29, 2011
OPERATOR'S WELL NO. RAYLE COAL OHI 8H
API WELL NO. 47-069-00113 H6A

WELL TYPE: OIL GAS X LIQUID INJECTION WASTE DISPOSAL
(IF "GAS,") PRODUCTION STORAGE DEEP SHALLOW X
LOCATION: ELEVATION 1070' WATERSHED HUFF RUN
DISTRICT RICHLAND COUNTY OHIO
QUADRANGLE TILTONSVILLE

SURFACE OWNER RAYLE COAL COMPANY ACREAGE 61.53 ACRES +/-
OIL & GAS ROYALTY OWNER RAYLE COAL COMPANY, ET AL LEASE ACREAGE 350.7 ACRES +/-
LEASE NO. _____

PROPOSED WORK: DRILL X CONVERT DRILL DEEPER REDRILL FRACTURE OR STIMULATE X PLUG OFF OLD FORMATION PERFORATE NEW FORMATION OTHER PHYSICAL CHANGE IN WELL (SPECIFY) _____

PLUG AND ABANDON CLEAN OUT AND REPLUG
TARGET FORMATION MARCELLUS ESTIMATED DEPTH TVD: 5,850' TMD: 11,350'
WELL OPERATOR CHESAPEAKE APPALACHIA, LLC DESIGNATED AGENT ERIC GILLESPIE
ADDRESS PO BOX 18496, OKLAHOMA CITY, OK 73154-0496 ADDRESS PO BOX 6070, CHARLESTON, WV 25301

06/27/2014

COUNTY NAME _____
PERMIT _____