

TOP HOLE (NAD 83)
 N: 607171.0
 E: 1655553.1
 LAT: 40°09'41.5"
 LONG: -80°37'36.7"
 DEC. LAT: 40.16153
 DEC. LONG: -80.626863
 UTM N: 4,445,752
 UTM E: 531,776

TOP HOLE (NAD 27)
 N: 607134.1
 E: 1664988.0
 LAT: 40°09'41.3"
 LONG: -80°37'37.4"
 DEC. LAT: 40.161459
 DEC. LONG: -80.627064

K.O.P. (NAD 27)
 N: 607417.7
 E: 1685776.1
 LAT: 40°09'44.2"
 LONG: -80°37'27.3"
 DEC. LAT: 40.162264
 DEC. LONG: -80.624251

TP 1 (NAD 27)
 N: 606597.9
 E: 1685651.1
 LAT: 40°09'35.9"
 LONG: -80°37'28.8"
 DEC. LAT: 40.159982
 DEC. LONG: -80.624668

TP 2 (NAD 27)
 N: 605926.7
 E: 1685560.0
 LAT: 40°09'29.4"
 LONG: -80°37'30.0"
 DEC. LAT: 40.158164
 DEC. LONG: -80.625000

TP 3 (NAD 27)
 N: 605570.0
 E: 1685589.4
 LAT: 40°09'25.9"
 LONG: -80°37'29.5"
 DEC. LAT: 40.157186
 DEC. LONG: -80.624847

BOTTOM HOLE (NAD 83)
 N: 601844.9
 E: 1655597.6
 LAT: 40°08'49.1"
 LONG: -80°37'09.5"
 DEC. LAT: 40.146981
 DEC. LONG: -80.619311
 UTM N: 4,444,140
 UTM E: 532,426

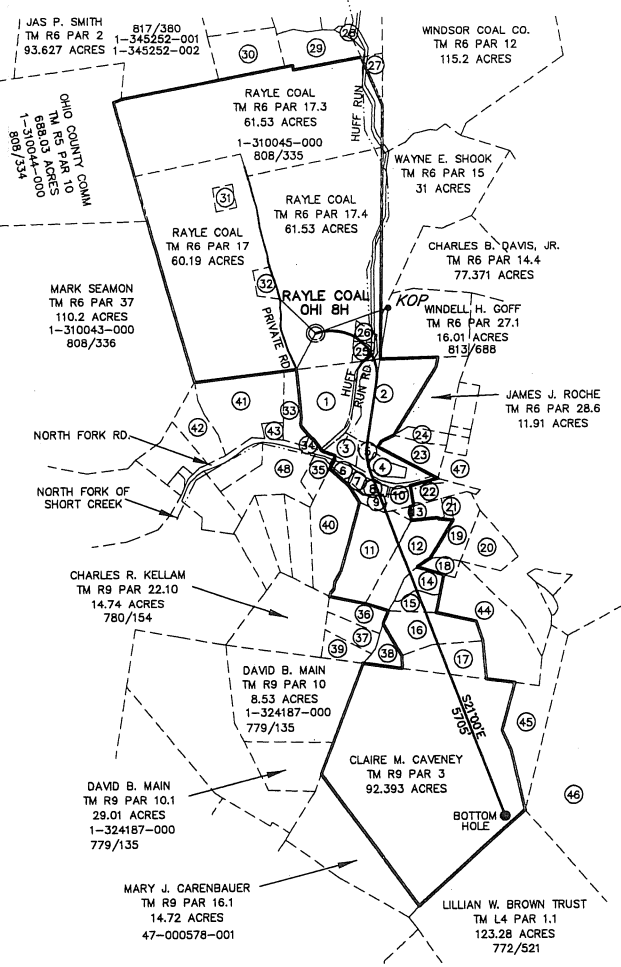
BOTTOM HOLE (NAD 27)
 N: 601808.1
 E: 1667032.5
 LAT: 40°08'48.6"
 LONG: -80°37'10.2"
 DEC. LAT: 40.146909
 DEC. LONG: -80.619513

K.O.P. (NAD 83)
 N: 607454.8
 E: 1684343.2
 LAT: 40°09'44.4"
 LONG: -80°37'26.8"
 DEC. LAT: 40.162336
 DEC. LONG: -80.624049

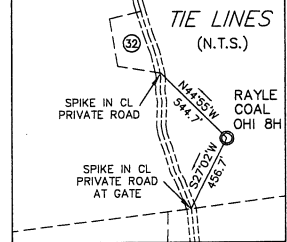
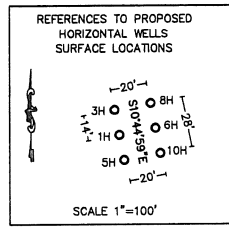
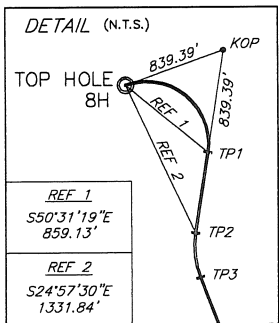
TP 1 (NAD 83)
 N: 606624.8
 E: 1684115.1
 LAT: 40°09'36.2"
 LONG: -80°37'28.7"
 DEC. LAT: 40.162054
 DEC. LONG: -80.624666

TP 2 (NAD 83)
 N: 605963.6
 E: 1684115.1
 LAT: 40°09'29.7"
 LONG: -80°37'28.7"
 DEC. LAT: 40.157258
 DEC. LONG: -80.624645

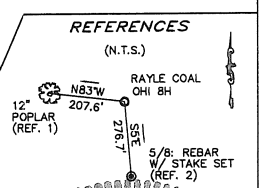
TP 3 (NAD 83)
 N: 605606.9
 E: 1684153.5
 LAT: 40°09'25.1"
 LONG: -80°37'28.7"
 DEC. LAT: 40.157258
 DEC. LONG: -80.624645



- LATITUDE 40°10'00"
- LONGITUDE 80°37'30"
- RICHARD A. WOOD, JR. TM R6 PAR 24.6 12.153 ACRES 1-321840-000 811/420
 - WINDELL GOFF TM R6 PAR 24.3 15.423 ACRES 1-325767-000 813/682
 - RANDALL L. CRABTREE TM R6 PAR 24 2.89 ACRES
 - LUTHER R. SMITH JR. TM R6 PAR 39 0.344 ACRES 47-000614-000
 - LESLIE A. HUNT TM R6 PAR 29 5.166 ACRES
 - JOHN D. CRUPE TM R6 PAR 38 0.9 ACRES
 - ROBERT W. OCHSENBEIN TM R6 PAR 39.3 0.558 ACRES
 - CHARLES E. SMITH TM R6 PAR 39.4 0.931 ACRES
 - DANIEL J. STRAND TM R6 PAR 39.2 1.58 ACRES
 - DANIEL J. STRAND TM R6 PAR 39.1 1.461 ACRES
 - JAMES L. WEST SR. TM R9 PAR 22.7 10.85 ACRES 822/366
 - NICHOLAS P. KLAMUT TM R9 PAR 22.8 9.15 ACRES 1-325449-000 812/254
 - KENNETH R. BARNES TM R9 PAR 19 0.965 ACRES
 - JEFFREY C. TAYLOR TM R9 PAR 22.18 2.67 ACRES 1-325698-000 815/124
 - JOHN C. RATCLIFFE TM R9 PAR 22.17 2.22 ACRES 1-325559-000 814/662
 - GREGORY B. WHITE TM R9 PAR 22.16 7.99 ACRES
 - MARK J. SWIGER TM R9 PAR 22.15 6.09 ACRES 47-000040-000 817/395
 - JEFFREY C. TAYLOR TM R9 PAR 20 1.54 ACRES 1-325706-000 815/158
 - LARRY BOYNES TM R9 PAR 22.9 5.21 ACRES 1-329220-000 814/86
 - PHILLIP E. COSS TM R6 PAR 21.1 4.94 ACRES 1-329356-000 814/82
 - VELMA L. TAGGART TM R9 PAR 18 0.56 ACRES 1-329424-000 814/227
 - ROBERT L. JEWELL II TM R6 PAR 40 2.884 ACRES 1-325865-000 813/705
 - DOUGLAS HUDSON TM R6 PAR 28.7 3.269 ACRES
 - DOUGLAS HUDSON TM R6 PAR 28.3 1.619 ACRES
 - WINDSOR COAL CO. TM R6 PAR 25 1.5 ACRES
 - JOSEPH G. BRYAN ET AL TM R6 PAR 17.1 1.0 ACRES 822/418
 - GARY HERCULES TM R6 PAR 16 1.25 ACRES
 - GARY HERCULES TM R6 PAR 6 0.25 ACRES
 - GARY HERCULES TM R6 PAR 5 4.7 ACRES
 - GARY HERCULES TM R6 PAR 4.1 7.0 ACRES
 - WEIRTON NATIONAL BANK TM R6 PAR 17.5 1.339 ACRES
 - RAYLE COAL CO. TM R6 PAR 17.2 1.58 ACRES 808/333
 - EDITH M. WOOD TM R6 PAR 22 4.175 ACRES 811/297
 - GWENDOLYN GODDARD TM R6 PAR 24.5 0.204 ACRES 1-322009-000
 - HEIDI M. TWADDLE TM R6 PAR 21 2.0 ACRES 811/792
 - CHARLES R. KELLAM TM R9 PAR 22.11 3.27 ACRES 780/154



- NOTES:
- TIES TO WELLS AND CORNERS ARE BASED ON GRID NORTH FOR THE WEST VIRGINIA STATE PLANE COORDINATE SYSTEM, NORTH ZONE NAD 27.
 - WELL LOCATION REFERENCES ARE BASED ON MAGNETIC MERIDIAN.
 - BOUNDARIES SHOWN HEREON DERIVED FROM DEEDS, TAX MAPS AND FIELD LOCATION AND ARE NOT INTENDED TO INFER A FULL BOUNDARY SURVEY.
 - SURFACE OWNERSHIP INFORMATION TAKEN FROM THE ASSESSOR AND COUNTY CLERK RECORDS OF OHIO COUNTY IN APRIL 2011.
 - WELL COORDINATES ESTABLISHED BY SUBFOOT GPS UNIT.



- CHARLES R. KELLAM TM R9 PAR 22.12 2.88 ACRES 780/154
- MARK J. SWIGER TM R9 PAR 22.14 2.37 ACRES 817/395
- CHARLES R. KELLAM TM R9 PAR 22.13 2.46 ACRES 780/154
- RAY J. CHENOWETH TM R9 PAR 22.6 11.01 ACRES 814/759
- LOUIS J. ENNIS JR. TM R6 PAR 19.2 15.71 ACRES 790/716
- SEAN A. SISARICK TM R6 PAR 19 5.814 ACRES 824/291
- MARY E. MOSES TM R6 PAR 23 0.89 ACRES
- JOHN C. RATCLIFFE TM R9 PAR 22.20 16.7 ACRES 1-325561-000 814/650
- PAUL M. MCKAY TM R9 PAR 51 12.325 ACRES 772/521
- PAUL M. MCKAY TM L4 PAR 1 159.15 ACRES 772/521
- RALPH D. ROBINSON TM R6 PAR 27 3.917 ACRES
- HEIDI M. TWADDLE TM R6 PAR 20.1 10.0 ACRES 821/424

(+) DENOTES LOCATION OF WELL ON UNITED STATES TOPOGRAPHIC MAPS

FILE NO. 11-0167-782
 DRAWING NO. _____
 SCALE 1" = 2000'
 MINIMUM DEGREE OF ACCURACY 1 IN 2500
 PROVEN SOURCE OF ELEVATION GPS
 SUBFOOT UNIT

I THE UNDERSIGNED, HEREBY CERTIFY THAT THIS PLAT IS CORRECT TO THE BEST OF MY KNOWLEDGE AND BELIEF AND SHOWS ALL THE INFORMATION REQUIRED BY LAW AND THE REGULATIONS ISSUED AND PRESCRIBED BY THE DEPARTMENT OF ENVIRONMENTAL PROTECTION.
 (SIGNED) Justin M. Dawson
 R.P.E. _____ P.S. 756



STATE OF WEST VIRGINIA
 DEPARTMENT OF ENVIRONMENTAL PROTECTION
 OIL AND GAS DIVISION

DATE NOVEMBER 29, 2011
 OPERATOR'S WELL NO. RAYLE COAL OHI 8H
 API WELL NO. 47 069 0113H6A

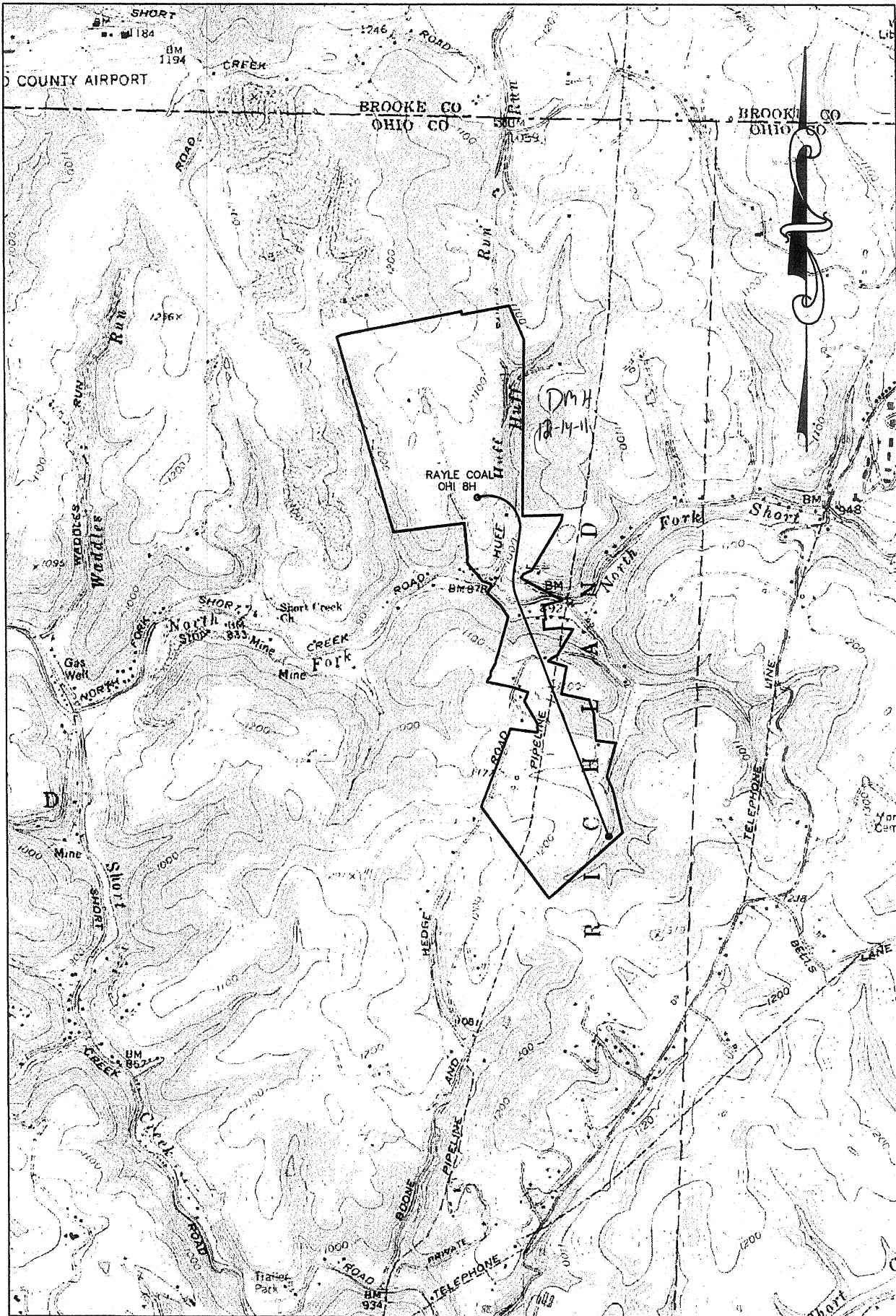
WELL TYPE: OIL GAS LIQUID INJECTION WASTE DISPOSAL
 (IF "GAS,") PRODUCTION STORAGE DEEP SHALLOW
 LOCATION: ELEVATION 1070' WATERSHED HUFF RUN
 DISTRICT RICHLAND COUNTY OHIO
 QUADRANGLE TILTONSVILLE

SURFACE OWNER RAYLE COAL COMPANY ACREAGE 61.53 ACRES +/-
 OIL & GAS ROYALTY OWNER RAYLE COAL COMPANY, ET AL LEASE ACREAGE 350.7 ACRES +/-
 LEASE NO. _____

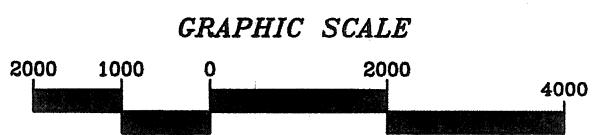
PROPOSED WORK: DRILL CONVERT DRILL DEEPER REDRILL FRACTURE OR STIMULATE PLUG OFF OLD FORMATION PERFORATE NEW FORMATION OTHER PHYSICAL CHANGE IN WELL (SPECIFY) _____

PLUG AND ABANDON CLEAN OUT AND REPLUG
 TARGET FORMATION MARCELLUS ESTIMATED DEPTH TVD: 5,850' TMD: 11,350'
 WELL OPERATOR CHESAPEAKE APPALACHIA, LLC DESIGNATED AGENT ERIC GILLESPIE
 ADDRESS PO BOX 18496, OKLAHOMA CITY, OK 73154-0496 ADDRESS PO BOX 6070, CHARLESTON, WV 25301

COUNTY NAME
 PERMIT



WELL: RAYLE COAL OHI 8H
 QUAD: TILTONSVILLE WV



DEC 2 2011
 Environmental Services
 Division