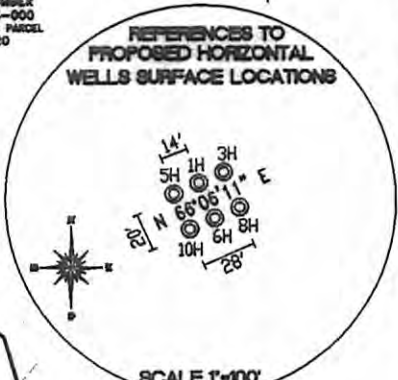
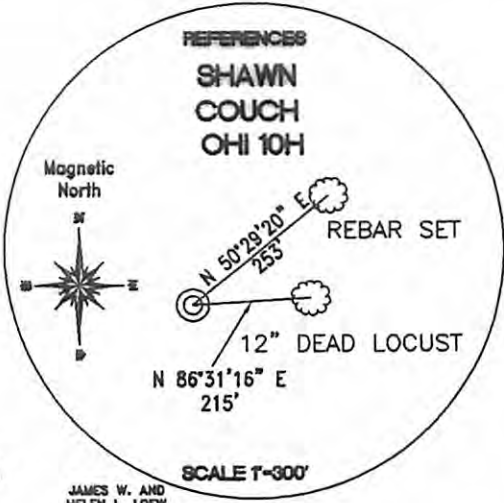
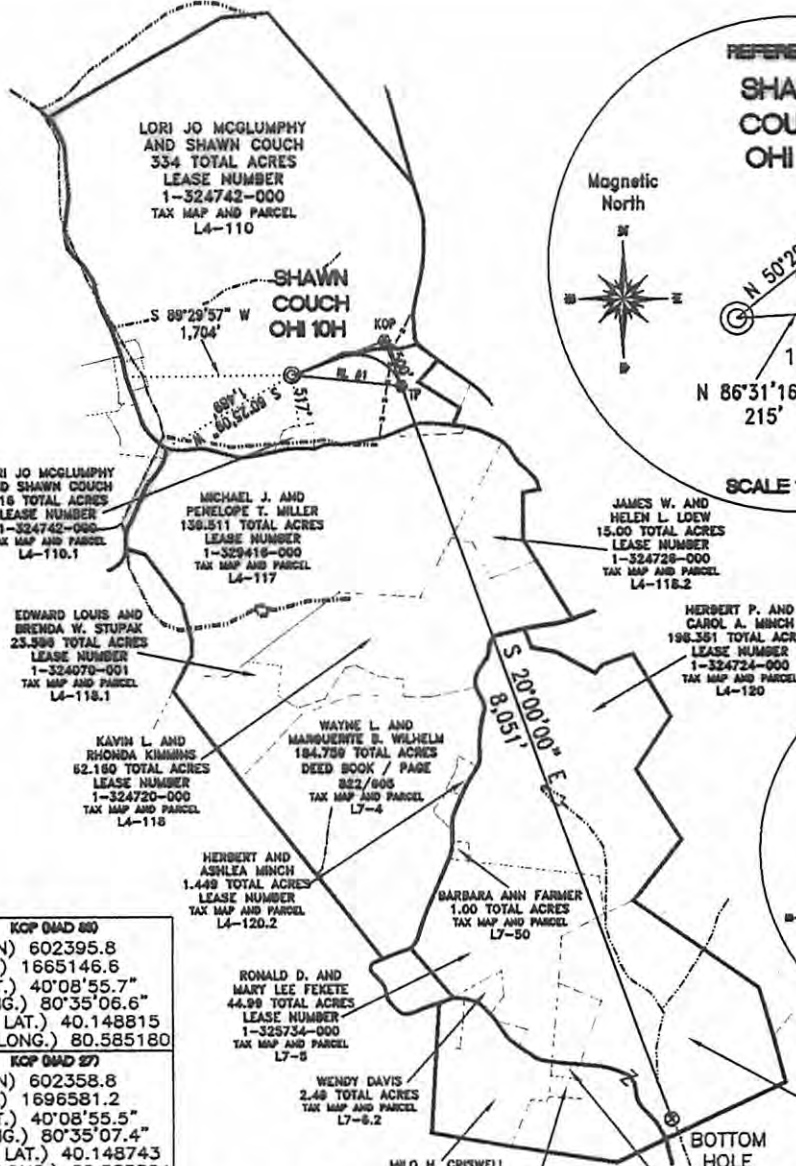
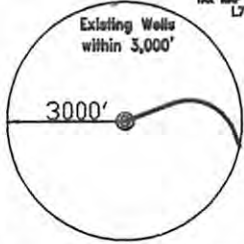


REFERENCE LINES
RL #1 S 84°03'40" E 1,143'



TOP HOLE (NAD 83) N) 602044.2 E) 1664180.6 LAT.) 40°08'52.1" LONG.) 80°35'19.0" DEC. LAT.) 40.147818 DEC. LONG.) 80.588619	KOP (NAD 83) N) 602395.8 E) 1665146.6 LAT.) 40°08'55.7" LONG.) 80°35'06.6" DEC. LAT.) 40.148815 DEC. LONG.) 80.585180
TOP HOLE (NAD 27) N) 602007.2 E) 1695615.3 LAT.) 40°08'51.9" LONG.) 80°35'19.8" DEC. LAT.) 40.147746 DEC. LONG.) 80.588623	KOP (NAD 27) N) 602358.8 E) 1696581.2 LAT.) 40°08'55.5" LONG.) 80°35'07.4" DEC. LAT.) 40.148743 DEC. LONG.) 80.585384
TP (NAD 83) N) 601926.0 E) 1665317.6 LAT.) 40°08'51.1" LONG.) 80°35'04.4" DEC. LAT.) 40.147531 DEC. LONG.) 80.584548	BOTTOM HOLE (NAD 83) N) 594360.9 E) 1668071.0 LAT.) 40°07'36.7" LONG.) 80°34'27.8" DEC. LAT.) 40.126857 DEC. LONG.) 80.574375
TP (NAD 27) N) 601889.0 E) 1696752.2 LAT.) 40°08'50.9" LONG.) 80°35'05.1" DEC. LAT.) 40.147459 DEC. LONG.) 80.584752	BOTTOM HOLE (NAD 27) N) 594323.9 E) 1699505.5 LAT.) 40°07'36.4" LONG.) 80°34'28.5" DEC. LAT.) 40.126784 DEC. LONG.) 80.574580



REFERENCE NOTES
 BOUNDARIES AS SHOWN TAKEN FROM DEEDS, TAX MAPS AND FIELD LOCATIONS. A FULL BOUNDARY SURVEY IS NOT EXPRESSED NOR IMPLIED. ALL BEARINGS ARE BASED ON TRUE NORTH. OWNERSHIP TAKEN FROM PUBLIC RECORDS OHIO COUNTY, WEST VIRGINIA JUNE 2011 STATE PLANE COORDINATES & NAD 83 LAT/LONG BY DIFFERENTIAL SUBMETER MAPPING GRADE GPS DRAFTED BY: E.A.M.

FILE #: CHE 038
 DRAWING #: 1806
 SCALE: 1"=2000'
 MINIMUM DEGREE OF ACCURACY: 1/200
 PROVEN SOURCE SUBMETER MAPPING OF ELEVATION: GRADE GPS

I, THE UNDERSIGNED, HEREBY CERTIFY THAT THIS PLAT IS CORRECT TO THE BEST OF MY KNOWLEDGE AND BELIEF AND SHOWS ALL THE INFORMATION REQUIRED BY LAW AND THE REGULATIONS ISSUED AND PRESCRIBED BY THE DEPARTMENT OF ENVIRONMENTAL PROTECTION.
 Signed:
 L.L.S. #2124 : Ernest J. Benchek III



(+) DENOTES LOCATION OF WELL ON UNITED STATES TOPOGRAPHIC MAPS WVDEP OFFICE OF OIL & GAS 601 57TH STREET CHARLESTON, WV 25304
 Well Type: Oil Waste Diposal Production Deep Gas Liquid Injection Storage Shallow
 WATERSHED: UPPER OHIO SOUTH
 COUNTY/DISTRICT: OHIO/LIBERTY
 SURFACE OWNER: LORI JO MCGLUMPHY AND SHAWN COUCH
 DIL & GAS ROYALTY OWNER: LORI JO MCGLUMPHY AND SHAWN COUCH
 LEASE NUMBERS:

DATE: SEPTEMBER 9, 2011
 OPERATOR'S WELL #: SHAWN COUCH OHI 10H
 API WELL #: 47 69 00106H
 STATE: WV COUNTY: PERMIT

CANCELLED

DRILL CONVERT DRILL DEEPER REDRILL FRACTURE OR STIMULATE
 PLUG OFF FORMATION PERFORATE NEW FORMATION PLUG & ABANDON
 CLEAN OUT & REPLUG OTHER CHANGE (SPECIFY):
 TARGET FORMATION: MARCELLUS ESTIMATED DEPTH: TVD: 6,250' TMD: 14,301'
 WELL OPERATOR : CHESAPEAKE APPALACHIA, LLC. DESIGNATED AGENT : ERIC B. GILLESPIE
 ADDRESS: PO BOX 18496 ADDRESS: PO BOX 6070
 CITY: OKLAHOMA CITY STATE: OK ZIP CODE: 73154-0496 CITY: CHARLESTON STATE: WV ZIP CODE: 25301

04/11/2014