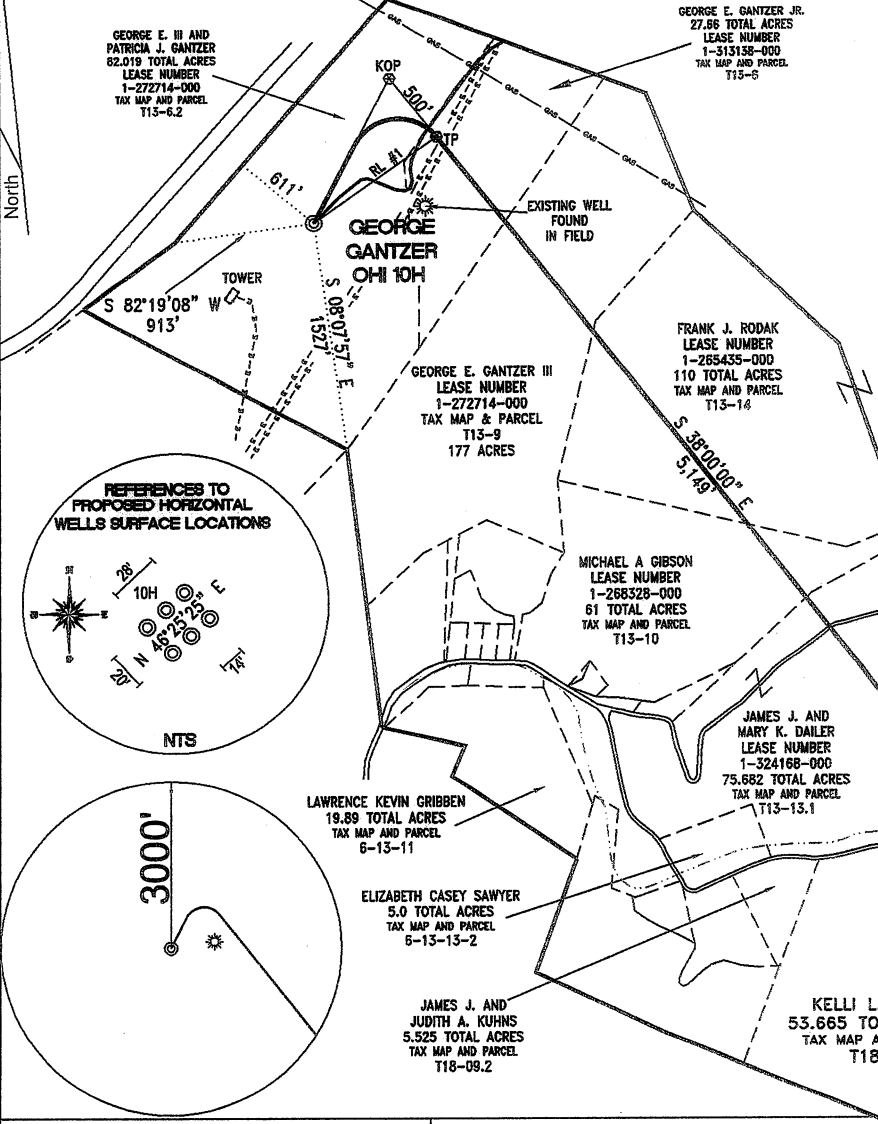
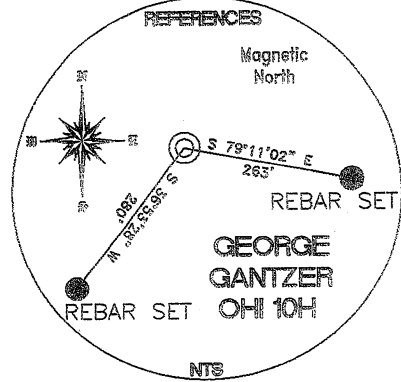
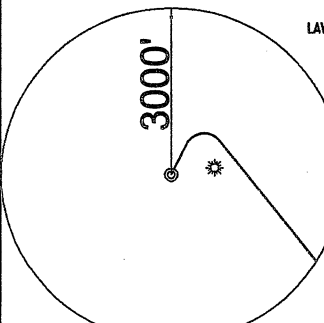
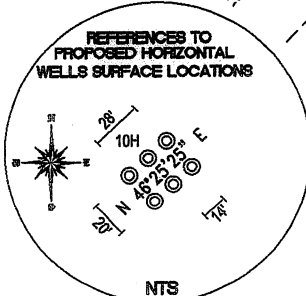


<b>TOP HOLE (NAD 27)</b> N) 564653.5 E) 1691883.9 LAT.) 40°02'42.3" LONG.) 80°36'01.9" DEC. LAT.) 40.045086 DEC. LONG.) 80.600533	<b>KOP (NAD 27)</b> N) 565623.0 E) 1692380.0 LAT.) 40°02'52.0" LONG.) 80°35'55.7" DEC. LAT.) 40.047764 DEC. LONG.) 80.598804
<b>TP (NAD 27)</b> N) 565229.0 E) 1692687.8 LAT.) 40°02'48.1" LONG.) 80°35'51.7" DEC. LAT.) 40.046693 DEC. LONG.) 80.597687	<b>BOTTOM HOLE (NAD 27)</b> N) 561171.2 E) 1695858.0 LAT.) 40°02'08.4" LONG.) 80°35'10.3" DEC. LAT.) 40.035660 DEC. LONG.) 80.586189



<b>TOP HOLE (NAD 83)</b> N) 564690.4 E) 1660449.1 LAT.) 40°02'42.6" LONG.) 80°36'01.2" DEC. LAT.) 40.045160 DEC. LONG.) 80.600330	<b>KOP (NAD 83)</b> N) 565659.8 E) 1660945.2 LAT.) 40°02'52.2" LONG.) 80°35'55.0" DEC. LAT.) 40.047838 DEC. LONG.) 80.598601
<b>TP (NAD 83)</b> N) 565265.8 E) 1661253.1 LAT.) 40°02'48.4" LONG.) 80°35'50.9" DEC. LAT.) 40.046766 DEC. LONG.) 80.597484	<b>BOTTOM HOLE (NAD 83)</b> N) 561208.1 E) 1664423.3 LAT.) 40°02'08.6" LONG.) 80°35'09.5" DEC. LAT.) 40.035734 DEC. LONG.) 80.585986




<b>REFERENCE LINES</b>
RL #1 N 54°24'20" E 989'

**REFERENCE NOTES:**  
Boundaries as shown taken from deeds, tax maps and field locations. A full boundary survey is not expressed nor implied. All bearings are based on true north. Ownership taken from public records Ohio County, West Virginia JUNE 2011  
State Plane Coordinates & NAD 83 Lat/Long by differential submeter mapping grade GPS  
Drafted by: E.A.M.

<b>FILE #:</b> CHE 021
<b>DRAWING #:</b> 1426
<b>SCALE:</b> 1"=1200'
<b>MINIMUM DEGREE OF ACCURACY:</b> 1/200
<b>PROVEN SOURCE OF ELEVATION:</b> SUBMETER MAPPING GRADE GPS

I, THE UNDERSIGNED, HEREBY CERTIFY THAT THIS PLAT IS CORRECT TO THE BEST OF MY KNOWLEDGE AND BELIEF AND SHOWS ALL THE INFORMATION REQUIRED BY LAW AND THE REGULATIONS ISSUED AND PRESCRIBED BY THE DEPARTMENT OF ENVIRONMENTAL PROTECTION.

Signed: 

L.L.S. #2124 : Ernest J. Benchek III



(+) DENOTES LOCATION OF WELL ON UNITED STATES TOPOGRAPHIC MAPS  
**WVDEP OFFICE OF OIL & GAS**  
601 57TH STREET  
CHARLESTON, WV 25304

Well Type:  Oil  Waste Diposal  Production  Deep  
 Gas  Liquid Injection  Storage  Shallow

**WATERSHED:** UPPER OHIO SOUTH **ELEVATION:** 1,260'

**COUNTY/DISTRICT:** OHIO/TRIDELPHIA **QUADRANGLE:** VALLEY GROVE WV.

**SURFACE OWNER:** GEORGE E. III AND PATRICIA J. GANTZER **ACREAGE:** 82.019 +/-

**OIL & GAS ROYALTY OWNER:** GEORGE E. III AND PATRICIA J. GANTZER **ACREAGE:** 592.141 +/-

**LEASE NUMBERS:** 1-272714-000, 1-272786-000, 1-265435-000, 1-268328-000

DRILL  CONVERT  DRILL DEEPER  REDRILL  FRACTURE OR STIMULATE   
PLUG OFF FORMATION  PERFORATE NEW FORMATION  PLUG & ABANDON   
CLEAN OUT & REPLUG  OTHER CHANGE  (SPECIFY):

**TARGET FORMATION:** MARCELLUS **ESTIMATED DEPTH:** TVD: 6,250' TVD: 11,399'

**WELL OPERATOR:** CHESAPEAKE APPALACHIA, LLC. **DESIGNATED AGENT:** ERIC B. GILLESPIE

**ADDRESS:** PO BOX 18496 **ADDRESS:** Po Box 6070

**CITY:** OKLAHOMA CITY **STATE:** OK **ZIP CODE:** 73154-0496 **CITY:** CHARLESTON **STATE:** WV **ZIP CODE:** 25301

**DATE:** AUGUST 24, 2011

**OPERATOR'S WELL #:** GEORGE GANTZER OHI 10H

**API WELL #:** 47 69 **00062H**  
STATE COUNTY PERMIT



