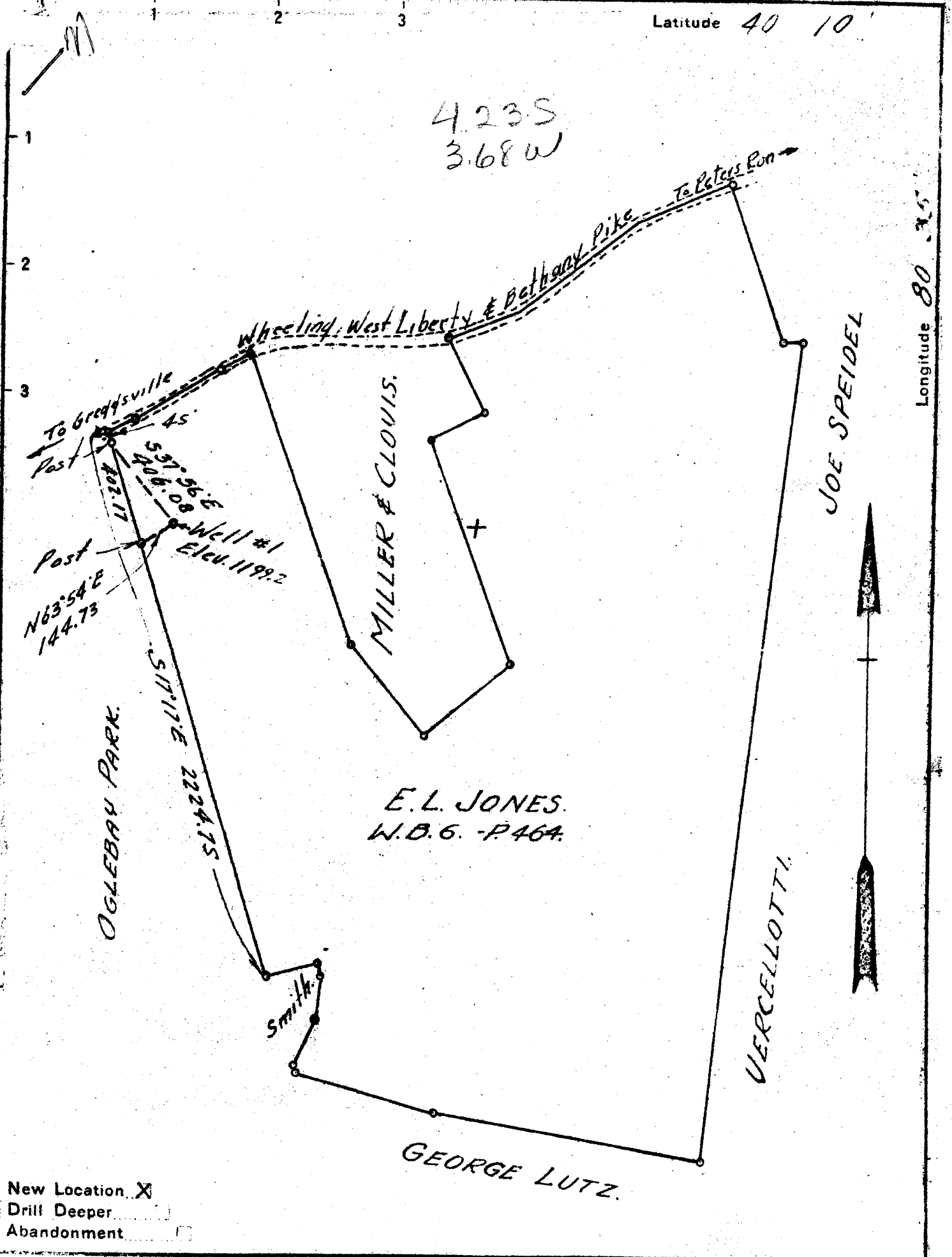


Latitude 40 10'

4.23 S  
3.68 W

Longitude 80 35'



New Location  X  
 Drill Deeper   
 Abandonment

Company CECIL E. TEDROW CO.  
 Address R.D. 4 - WAYNESBURG PA.  
 Farm E.L. JONES.  
 Tract 1 Acres 142 Lease No. \_\_\_\_\_  
 Well (Farm) No. 1 Serial No. \_\_\_\_\_  
 Elevation (Spirit Level) 1199.2'  
 Quadrangle WHEELING.  
 County OHIO District RICHLAND  
 Engineer WALTER W. STEGMAN  
 Engineer's Registration No. 394.  
 File No. \_\_\_\_\_ Drawing No. \_\_\_\_\_  
 Date Dec. 23, 1947 Scale 1 inch = 500 Feet.

STATE OF WEST VIRGINIA  
 DEPARTMENT OF MINES  
 OIL AND GAS DIVISION  
 CHARLESTON

WELL LOCATION MAP

FILE NO. OH10-13

+ Denotes location of well on United States Topographic Maps, scale 1 to 62,500, latitude and longitude lines being represented by border lines as shown.

- Denotes one inch spaces on border of original tracing.

WEST VIRGINIA DEPARTMENT OF MINES  
OIL & GAS DIVISION  
W E L L R E C O R D

Permit No. Ohio 13					
Wheeling Quad.					Dry Hole
Company	Cecil E. Tedrow				CASING & TUBING
Address	R.D. #4, Waynesburg, Pa.	10	445	Same	
Farm	E.L. Jones Acres 141	8 1/2	838.4	"	
Location	Peters Run	6 5/8	1420	"	
Well No.	1				
District	Richland Ohio County				
Surface	E.L. Jones, Wheeling, W.Va.			Coal at 420'	
Mineral	Same				
Commenced	April 30, 1948				
Completed	July 10, 1948				
Dry Hole					

Conductor		0	16	
Slate & Lime Shells Gr	S	16	420	
Fgh. Coal Blk	S	420	426	
Slate Dk	S	426	558	
Sand Gr	H	558	578	
Slate & Shells Gr	S	578	838	
Sand Gr	S	838	850	Water Sand
Slate Gr	S	850	930	
Sand Gr	S	930	1046	Water Sand
Slate Gr	S	1046	1215	
Sand Gr	S	1215	1265	Water Sand
Slate Gr	S	1265	1310	
Sand Gr	S	1310	1338	Water Sand
Slate Gr	S	1338	1415	
Lime Gr	H	1415	1443	Big Lime
Sand Gr	H	1443	1674	Big Injun
Total Depth			1679	

APR 18 1949