

40°10'00"

Latitude

80°40'00"

+
 .65s
 1.48w

Longitude

Topo Location

7.5' Loc. _____ 15' Loc. _____
 _____ (calc.) _____

Company JRN Miller

Farm Henry Youngman #1

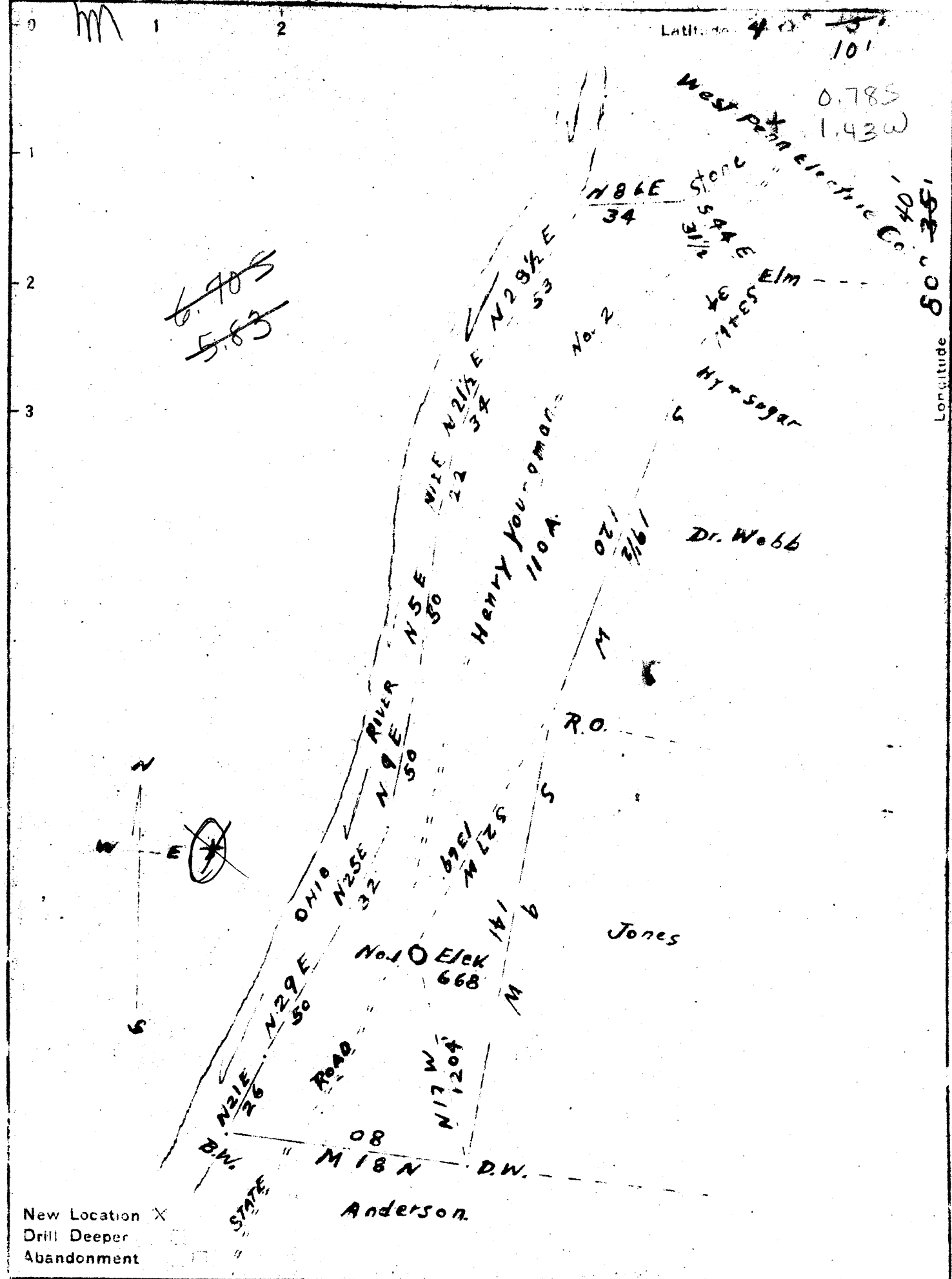
15' Quad _____
(sec.)

7.5' Quad Tilghmerville

District Richland

WELL LOCATION PLAT

County 069 Permit 12



New Location X
 Drill Deeper
 Abandonment

Company J. R. N. MILLER
 Address PITTSBURGH, PA.
 Farm HENRY YOUNGMAN
 Tract One Acres 110 Lease No. _____
 Well (Farm) No. One Serial No. _____
 Elevation (Spirit Level) 668 Feet
 Quadrangle Wheeling
 County Ohio District Richland
 Engineer J. M. Cochran
 Engineer's Registration No. Co. Surveyor
 File No. _____ Drawing No. 1
 Date 11-20-1947 Scale 1 inch = 40 Rods

STATE OF WEST VIRGINIA
 DEPARTMENT OF MINES
 OIL AND GAS DIVISION
 CHARLESTON

WELL LOCATION MAP
 FILE NO. OHIO-12

+ Denotes location of well on United States Topographic Maps, scale 1 to 62,500, latitude and longitude lines being represented by border lines as shown
 - Denotes one inch spaces on border of original tracing.

WEST VIRGINIA DEPARTMENT OF MINES
OIL & GAS DIVISION
W E L L R E C O R D

Permit No. Ohio 12			
Wheeling Quad.			Dry Hole
Company	931 Tyndall St., Pgh., Pa.		CASING & TUBING
Farm	West Penn Power Co. A 200 Approx.		
Location	Ohio River	10	38
Well No.	1	Elev. 668 Ft.	8 $\frac{1}{4}$ 281.08
District	Richland	Ohio County	6 5/8 826.07
Surface	West Penn Power Co. Pgh., Pa.		5 3/16 1126.10
Mineral	Same		
Commenced	May 10, 1948		
Completed	Aug. 7, 1948		
Open flow	5/10ths W in 1"		
Volume	55,428 C.F.		
Fresh Water	90' HFW		
Salt Water	740' HFW		

(Henry Youngman)
(plat)

APR 12 1949

Gravel Dk	S	0	40
Sand Stone Lt	H	40	50
Red Rock	S	50	70
Slate Dk	S	70	100
Gritty Lime Lt	H	100	120
Slate Dk	S	120	172
Sand Lt	H	172	184
Slate Dk	S	184	270
Sand Lt	H	270	280
Slate Lt	S	280	370
Sand Lt	H	370	390
Slate Dk	S	390	440
Sand Lt	H	440	470
Slate & S Lt	H&S	470	500
Sand Lt	H	500	540
Slate & Shells	H&S	540	615
Sand Lt	H	615	655
Slate & Shells	H&S	655	705
Sand Lt	H	705	800
Big Lime Cream	H	800	840
Big Injun Dk	H	840	1090
Slate & Shells Broken Formation		1090 to 1514	
Total Depth			1514

(Circular stamp)