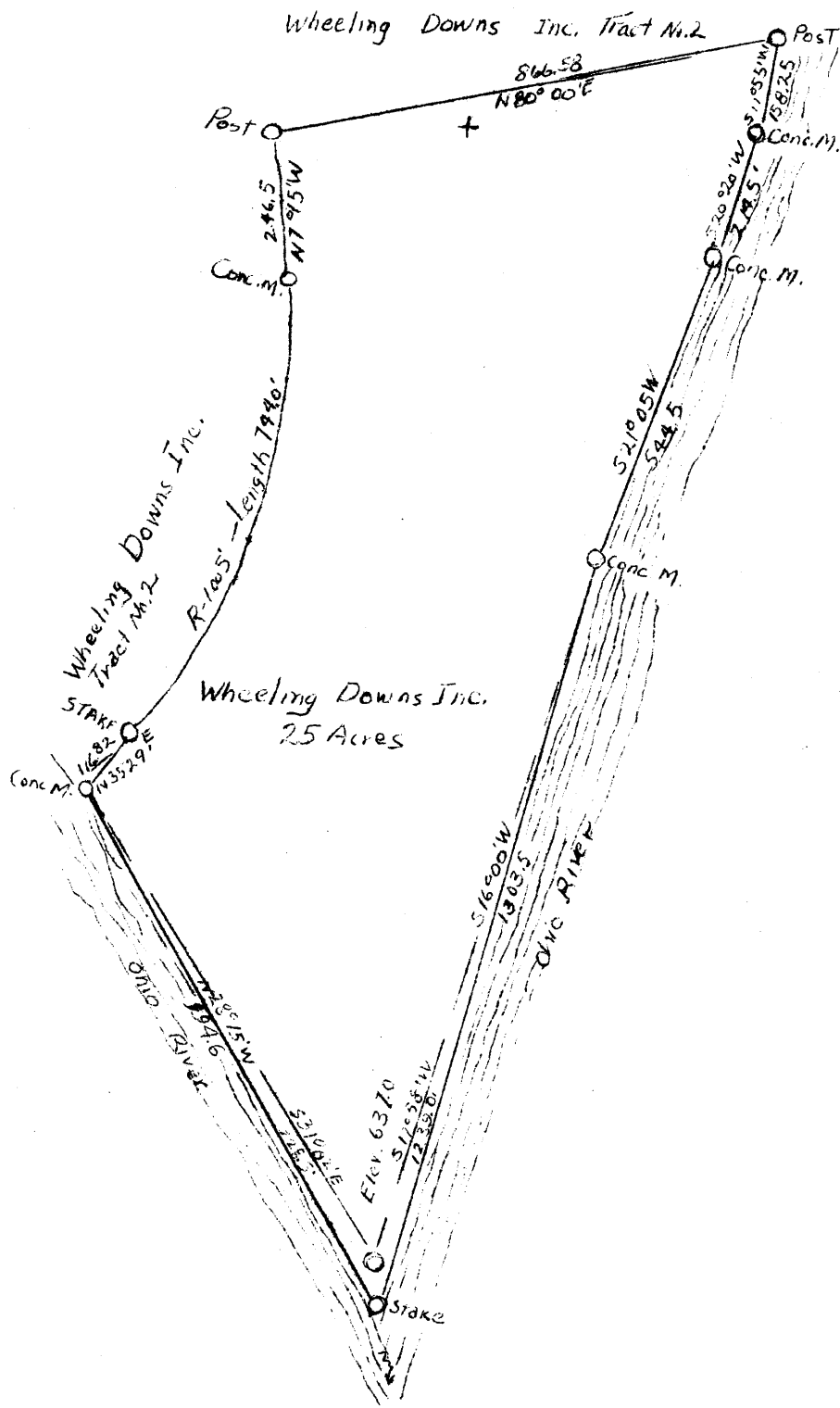


Latitude 40° 05'

1.70 S  
3.48 W



Longitude 80° 40'

new Location

Company Lias Brothers  
 Address No. 16 Sixteenth Wheeling W. Va.  
 Farm Wheeling Downs Inc.  
 Tract ONE Acres 25± Lease No. ONE  
 Well (Farm) No. ONE Serial No. \_\_\_\_\_  
 Elevation (Spirit level) 6370'  
 Quadrangle Wheeling  
 County Ohio District MADISON  
 Engineer George Z. Thacker  
 Engineer's Registration No. 1187  
 File No. \_\_\_\_\_ Drawing No. \_\_\_\_\_  
 Date Dec. 18/1911 Scale 1"=300'

STATE OF WEST VIRGINIA  
 Oil and Gas Division  
 Charleston

WELL LOCATION MAP  
 File No. OHIO - 11

+ Denotes location of well on U. S. Topographic Maps, scale 1 to 62,500, latitude and longitude lines being represented by border lines as shown

- Denotes one inch spaces on border line of original tracing.

500

WEST VIRGINIA DEPARTMENT OF MINES  
OIL & GAS DIVISION  
W E L L R E C O R D

Permit No. Ohio 11  
Wheeling Quad.  
Company  
Address  
Farm  
Location  
Well No.  
District  
Surface  
Mineral  
Commenced  
Completed  
Fresh Water

Dry Hole  
CASING & TUBING

Lias Brothers  
16-16th St., Wheeling, W.Va. 10 61  
Wheeling Downs Acres 13 8 1/4 475  
Ohio River 6 5/8 939  
One Elev. 637  
(Inc.) County Ohio No coal encountered:  
Wheeling Downs, Wheeling, W.Va. Well started 90 feet  
Wheeling Downs Inc., Wheeling, W.Va. under horizon of  
Dec. 30, 1947 Pittsburgh Coal  
Mar. 22, 1948  
55'; 380 & 403 H.F.; 858' H.F.

Gravel			0	61
Lime Bl	H		61	70
Lime Red	S		70	80
Sand Dk	S		80	95
Shale Red	S		95	115
Lime Dk	S		115	130
Shale Red	S		130	155
Shale Blk	S		155	186
Shale Red	S		186	194
Shale Bl	S		194	234
Lime Wh	H		234	250
Shale Dk	S		250	340
Shale Blk	S		340	355
Shale Bl	S		355	367
Lime Wh	H		367	380
Sand Wh	H		380	458
Shale Blk	S		458	470
Sand Wh	H		470	492
Shale Dk	S		492	518
Sand Wh	H		518	528
Shale Dk	S		528	590
Sand Dk	S		590	635
Shale Dk	S		635	735
Sand Wh	H		735	751
Shale Dk	S		751	768
Sand Wh	H		768	883
Shale Dk	S		883	889
Sand Wh	H		889	906
Big Lime Wh	H		906	975
Big Injun Wh	H		975	1183
Shale Dk	S		1183	1190
Sand Shells	S		1190	1340
Shale Dk	S		1340	1517
Sand Berea Lt	S		1517	1522
Shale Dk	S		1522	1724
Sand Lt	S		1724	1730
Total Depth				1735

Show gas 742  
Show of oil 995 and 1085

WHEELING DOWNS No. 1 — LIAS BROS. — OHIO - 11