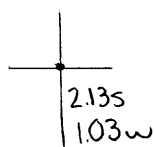


Latitude

Longitude



Topo Location

7.5' Loc. _____ 15' Loc. _____
 _____ (calc.) _____

Company AJ Dye

Farm Hulliborn, Bates + Savage #1

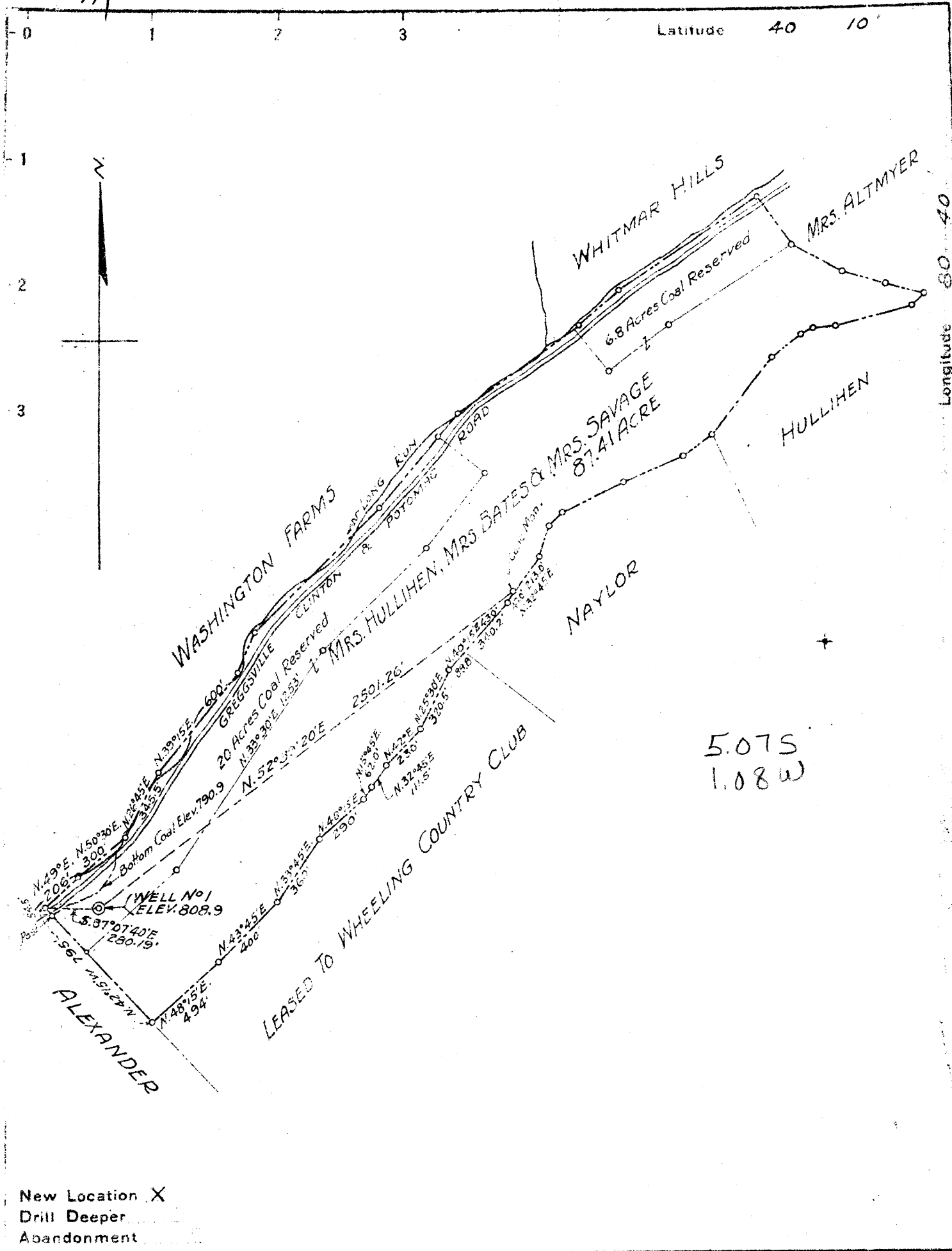
15' Quad _____
(sec.)

7.5' Quad Wheeling

District Richland

WELL LOCATION PLAT

County 069 Permit 9



New Location X
 Drill Deeper
 Abandonment

Company A. J. DYE
 Address NEW FREEPORT, GREENE CO., PA.
 Farm HULLIHEN, BATES, & SAVAGE (PART OF CAMPBELL FARM)
 Tract _____ Acres 87.41 Lease No. _____
 Well (Farm) No. 1 Serial No. _____
 Elevation (Spirit Level) 808.9
 Quadrangle WHEELING
 County OHIO District RICHLAND
 Engineer SIDNEY C. SMITH - C. C. SMITH'S SONS
 Engineer's Registration No. 240
 File No. _____ Drawing No. _____
 Date MAY 10, 1946 Scale 1" = 600'

STATE OF WEST VIRGINIA
 DEPARTMENT OF MINES
 OIL AND GAS DIVISION
 CHARLESTON

WELL LOCATION MAP
 FILE NO. OHIO-9

+ Denotes location of well on United States Topographic Maps, scale 1 to 62,500. latitude and longitude lines being represented by border lines as shown.
 -- Denotes one inch spaces on border line of original tracing.

5-00

WEST VIRGINIA DEPARTMENT OF MINES
OIL & GAS DIVISION
W E L L R E C O R D

Permit No. Ohio 9
Wheeling Quad.
Company
Address
Farm
Location
Well No.
District
Surface
Mineral
Commenced
Completed
Oil

A.J. Dye
New Freeport, Green County, Pa.
Hullihen, Bates and Savage
1 Elev. 808.9
Richland Ohio County

Dry Hole
casing & tubing

A 87.41 10 135 135
8 1/2 704 704
6 5/8 1036 Pld.

June 1946
August 1946
Slight show

Conductor	0	11	
Surface	11	32	
Red Rock	140	160	
Lime, Shells and Slate	160	435	
Slate	435	665	
Lime	665	700	
Slate	700	850	
Lime Shells and Slate	850	1032	
Big Lime	1032	1048	
Big Injun	1048	1323	
Slate	1323	1345	Oil 1320' slight show
TOTAL DEPTH		1345	