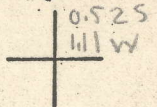
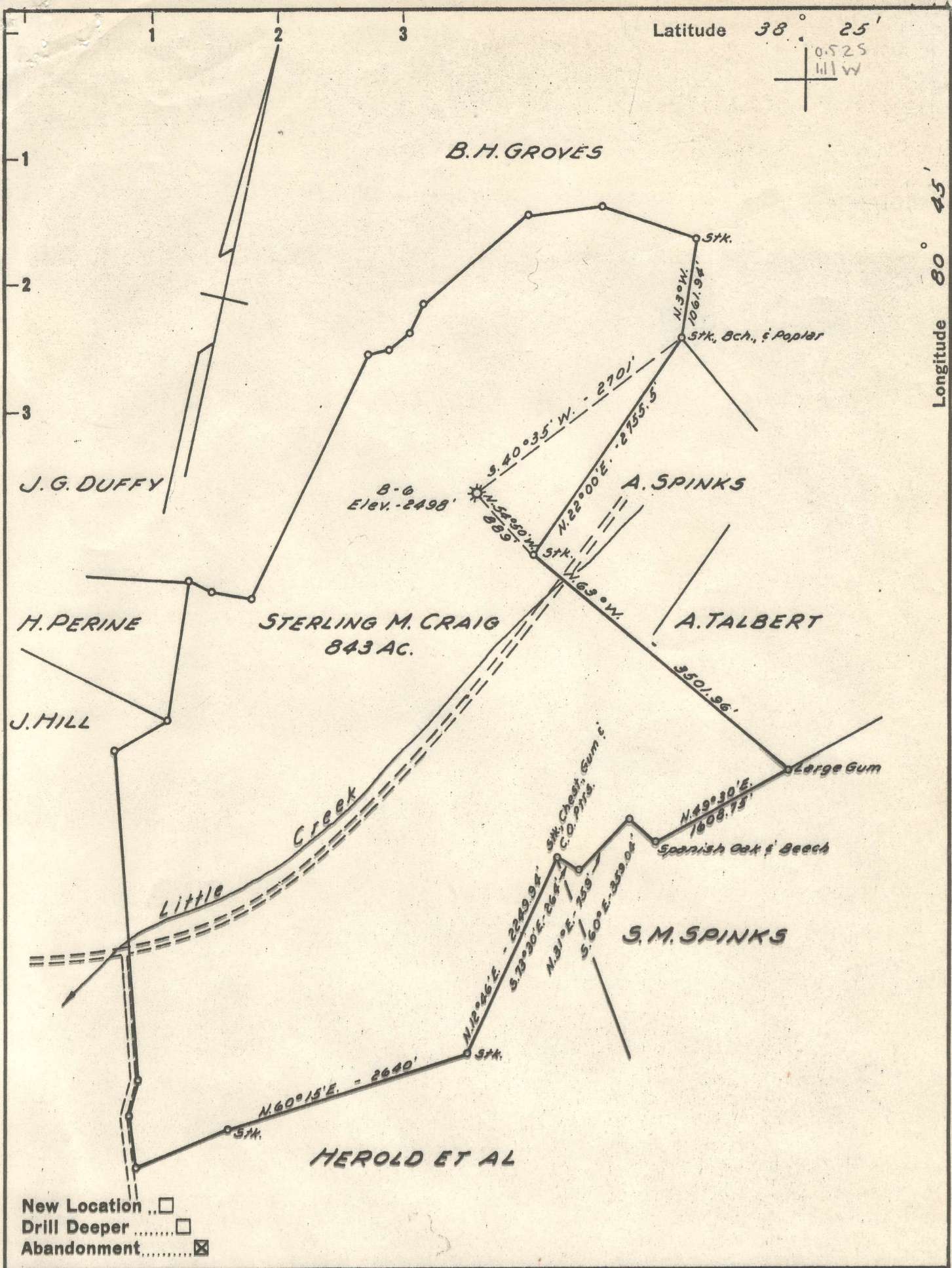


Latitude 38° 25'



Longitude 80° 45'



New Location ..
Drill Deeper
Abandonment.....

Company	<u>SOUTHEASTERN GAS CO.</u>
Address	<u>1800 UNION BLDG.</u> <u>CHARLESTON, W. VA.</u>
Farm	<u>STERLING M. CRAIG</u>
Tract	Acres <u>843</u> Lease No. <u>WN-9</u>
Well (Farm) No.	Serial No. <u>B-6</u>
Elevation (Spirit Level)	<u>2498'</u>
Quadrangle	<u>SUMMERSVILLE EC</u>
County	<u>NICHOLAS</u> District <u>HAMILTON</u>
Engineer	<u>JOHN W. HAMILTON</u>
Engineer's Registration No.	<u>2274</u>
File No.	Drawing No.
Date	<u>JULY 17, 1960</u> Scale <u>1" = 1320'</u>

STATE OF WEST VIRGINIA
DEPARTMENT OF MINES
OIL AND GAS DIVISION
CHARLESTON

WELL LOCATION MAP
FILE NO. NIC-11-A

+ Denotes location of well on United States Topographic Maps, scale 1 to 62,500, latitude and longitude lines being represented by border lines as shown.

- Denotes one inch spaces on border line of original tracing.

6-6 (227)

Hamilton District, Nicholas County, W. Va.

By Hamilton Oil & Gas Co.

On dividing ridge between Little Creek and Brushy Fork,
northeast of Hookersville.

Elevation of surface, 2435'.

10" casing, 220'; 8 $\frac{1}{4}$ " , 1163'; 6-5/8" , 1927'; 2" tubing, 2324';
all left in well.

5-3/16" liner, 183', set at 2256' (left in well).

Packer on 6-5/8" casing set at 1887'; anchor on 6-5/8" casing,
40'; perforated for 40 feet.

Gas from 1905-1920', 2304-2307', and 2318-2321'.

	Top.	Bottom.
Red rock	0	13
Sand	13	50
Coal	50	52
Gritty lime	52	180
Coal	180	184
Lime shells	184	275
Coal	275	281
Lime shells	281	330
Sand	330	415
Slate	415	427
Sand	427	489
Slate	489	550
Sand	550	648
Lime	648	658
Slate	658	700
Sand	700	790
Gritty lime	790	895
Slate	895	920
Lime	920	935
Sand	935	1080
Slate	1080	1095
Lime	1095	1110
Sand	1110	1145
Slate	1145	1158
Lime	1158	1170
Sand	1170	1216
Sand	1216	1260
Slate	1260	1365
Sand	1365	1455
Slate	1455	1490
Sand	1490	1517
Coal	1517	1521
Slate	1521	1590
Lime	1590	1610
Slate	1610	1630
Red rock	1630	1665
Lime	1665	1680
Slate	1680	1750
Lime	1750	1825
Red rock	1825	1875
Upper Maxton Sand (gas, 1905-1920')	1875	1965
Slate	1965	2015
Lower Maxton Sand	2015	2087
Pink rock	2087	2092

(OVER)

S. M. CRAIG ET AL. NO. 2 (6) WELL (Continued).

	Top.	Bottom.
Slate	2092	- 2146
Lime	2146	- 2167
Slate	2167	- 2171
Lime	2171	- 2198
Slate	2188	- 2246
Big Lime	2246	- 2304
Big Injun Sand (gas, 2304-07' & 2318-21)	2304	- 2324
Total depth: (SLM)		2324

Top.	Bottom.	
0	0	Red rock
13	13	Sand
30	30	Coal
52	52	Gritty lime
180	180	Coal
184	184	Coal
184	184	Coal
214	214	Lime shales
215	215	Coal
215	215	Coal
281	281	Lime shales
330	330	Sand
330	330	Sand
415	415	Slate
415	415	Slate
489	489	Sand
489	489	Slate
550	550	Slate
550	550	Sand
618	618	Lime
658	658	Lime
700	700	Slate
700	700	Sand
700	700	Sand
825	825	Gritty lime
825	825	Slate
825	825	Slate
825	825	Lime
1080	1080	Sand
1080	1080	Slate
1080	1080	Slate
1110	1110	Lime
1110	1110	Sand
1115	1115	Slate
1115	1115	Slate
1170	1170	Lime
1170	1170	Sand
1216	1216	Sand
1216	1216	Sand
1305	1305	Slate
1305	1305	Sand
1355	1355	Sand
1355	1355	Slate
1490	1490	Sand
1490	1490	Sand
1517	1517	Coal
1517	1517	Coal
1521	1521	Slate
1521	1521	Lime
1530	1530	Slate
1530	1530	Slate
1630	1630	Red rock
1630	1630	Lime
1665	1665	Slate
1665	1665	Slate
1750	1750	Lime
1750	1750	Lime
1825	1825	Red rock
1825	1825	Upper Maxton Sand (gas, 1905-1920)
1875	1875	Slate
1875	1875	Lower Maxton Sand
2087	2087	Pink rock
2087	2087	Pink rock

(OVER)

CRAIG HRS. (S.H. CRAIG) NO. B-6 WELL

Hamilton District, Nicholas County, W. Va.
 By Southeastern Gas Co., Box 2347, Charleston 28, W. Va.
 Drilled under permit Nic-11-A; Summersville EC Quad.
 On 843 acres.
 Elevation 2498' L.
 Minerals owned by W. Va. Corp., Summersville, W. Va.
 Drilling commenced Aug. 9/24/ completed Oct. 11/24.
 Volume, 4,500 M.cu. ft.
 Rock pressure 470 lbs.
 10 3/4" casing 220' left in; 8 5/8" O.D. 1163' left in; 7" O.D. 1927' left
 in; 5 1/2" 3188' left in; 2 3/8" O.D. 2324' left in.
 Packer, 2 x 7 x 16", set at 1837'; perf. top 2284'; bottom 2324'.
 Coal encountered at 50', 24"; 275', 72"; 1517', 48".
 Record from Mrs. Griffith to RCT, 1/3/61, O.F. No. 39

	Top	Bottom
Red rock	13	
Sand	13	50
Coal	50	52
Gritty lime	52	180
Coal	180	184
Lime shells	184	275
Coal	275	281
Lime shells	281	380
Sand	330	415
Slate	415	427
Sand	427	489
Slate	489	550
Sand	550	648
Lime	648	658
Slate	658	700
Sand	700	790
Gritty lime	790	895
Slate	895	920
Lime	920	935
Sand	935	1080
Slate	1080	1095
Lime	1095	1110
Sand	1110	1145
Slate	1145	1158
Sand	1158	1170
Sand	1170	1216
Sand	1216	1260
Slate	1260	1365
Sand	1365	1455
Slate	1455	1490
Sand	1490	1517
Coal	1517	1521
Slate	1521	1590
Lime	1590	1610
Slate	1610	1630
Red rock	1630	1665
Lime	1665	1680
Slate	1680	1750
Lime	1750	1825
Red rock	1825	1875
Upper Maxon Sand	1875	1965
Slate	1965	2015

Hamilton Blaster, Nicholas County, W. Va.
 By Hamilton Blaster Co. Box 227, Charleston 25, W. Va.

	Top	Bottom
Lower Maxon Sand	2015	2087
Pink rock	2087	2092
Slate	2092	2146
Lime	2146	2167
Slate	2167	2171
Lime	2171	2188
Slate	2188	2246
Big Lime	2246	2304
Steel line (Big Injun)	2304	2324
Measurement - Total Depth		2324

Top	Bottom	
13		Red rock
13		Sand
20		Coal
23		Crusty lime
100		Coal
120		Lime shales
184		Coal
278		Lime shales
281		Coal
300		Lime shales
413		Sand
427		Slate
427		Sand
489		Slate
520		Sand
648		Lime
658		Slate
700		Sand
700		Crusty lime
825		Slate
825		Lime
825		Sand
1000		Slate
1000		Lime
1110		Sand
1110		Slate
1130		Sand
1170		Sand
1170		Sand
1210		Sand
1210		Sand
1260		Slate
1260		Sand
1275		Slate
1275		Sand
1317		Coal
1317		Slate
1390		Lime
1410		Slate
1410		Red rock
1425		Lime
1425		Slate
1430		Lime
1430		Red rock
1475		Upper Maxon Sand
1475		Slate

(Over) 1. 2.



21

STATE OF WEST VIRGINIA
DEPARTMENT OF MINES
OIL AND GAS DIVISION

Quadrangle Summersville

WELL RECORD

Oil or Gas Well Gas
(KIND)

Permit No. 11-A

Company Southeastern Gas Company
Address Box 2147, Charleston 28, W. Va.
Farm Craig Heirs (Arling M. Smith) Acres 5 2/3
Location (waters) Muddlety Creek
Well No. B-6 Elev. 2498
District Hamilton County Nicholas
The surface of tract is owned in fee by _____
Address _____
Mineral rights are owned by W. Va. Corporation
Summersville Address W. Va.
Drilling commenced August 9, 1924
Drilling completed October 11, 1924
Date Shot _____ From _____ To _____
With _____
Open Flow _____ /10ths Water in _____ Inch
_____ /10ths Merc. in _____ Inch
Volume 1.5000 Cu. Ft.
Rock Pressure 170# lbs _____ hrs.
Oil _____ bbls., 1st 24 hrs.
WELL ACIDIZED _____
WELL FRACTURED _____

Casing and Tubing	Used in Drilling	Left in Well	Packers
Size			Kind of Packer
16			
13			
10 3/4 OD	220	220	Size of 2 x 7 x 16
8 3/8 OD	1163	1163	
5 7/8 OD	1927	1927	Depth set 1887
5 3/16 2 OD	183	183	
3			Perf. top 2284
2 3/8 OD	2324	2324	Perf. bottom 2324
Liners Used			Perf. top _____
			Perf. bottom _____

CASING CEMENTED	SIZE	No. Ft	Date
COAL WAS ENCOUNTERED AT 50 FEET 21 INCHES			
75 FEET	72 INCHES	1517 FEET	48 INCHES
FEET	INCHES	FEET	INCHES

RESULT AFTER TREATMENT
ROCK PRESSURE AFTER TREATMENT

Formation	Color	Hard or Soft	Feet		Oil, Gas or Water	Depth	Remarks
			Fresh Water	Salt Water			
Red rock			13				
Sand			13	50			
Coal			50	52			
Gritty lime			52	180			
Coal			180	184			
Lime shells			184	275			
Coal			275	281			
Lime shells			281	330			
Sand			330	415			
Slate			415	427			
Sand			427	489			
Slate			489	550			
Sand			550	648			
Lime			648	658			
Slate			658	700			
Sand			700	790			
Gritty lime			790	895			
Slate			895	920			
Lime			920	935			
Sand			935	1080			
Slate			1080	1095			
Lime			1095	1110			
Sand			1110	1145			
Slate			1145	1158			
Lime			1158	1170			
Sand			1170	1216			
Sand			1216	1260			
Slate			1260	1365			

JAN 3 1961

Formation	Color	Hard or Soft	Top	Bottom	Gas or Water	Depth Fathoms	Remarks
Sand			1365	1455			
Slate			1455	1490			
Sand			1490	1417			
Coal			1417	1521			
Slate			1521	1590			
Line			1590	1610			
Slate			1610	1630			
Red Rock			1630	1665			
Line			1665	1680			
Slate			1680	1750			
Line			1750	1825			
Red Rock			1825	1875			
Upper Maxon Sand			1875	1965			
Slate			1965	2015			
Lower Maxon Sand			2015	2037			
Pink Rock			2037	2092			
Slate			2092	2146			
Line			2146	2167			
Slate			2167	2171			
Line			2171	2188			
Slate			2188	2246			
Big Line			2246	2304			
Steel Line	Big Injun		2304	2324			
Measurement	Total Depth			2324			

DEPARTMENT OF MINES Date _____ 19__

APPROVED _____



By _____ (Title)