

47 0 6 7 0 0 4 1 8 P

WW-7  
8-30-06



West Virginia Department of Environmental Protection  
Office of Oil and Gas

**WELL LOCATION FORM: GPS**

API: 47-067-00418 WELL NO.: 1

FARM NAME: Mower Lumber

RESPONSIBLE PARTY NAME: Mike Ross

COUNTY: Nicholas DISTRICT: Jefferson

QUADRANGLE: Summersville Dam

SURFACE OWNER: Young Life Inc.

ROYALTY OWNER: \_\_\_\_\_

UTM GPS NORTHING: 42300.638

UTM GPS EASTING: 50275.84 GPS ELEVATION: 1610'

The Responsible Party named above has chosen to submit GPS coordinates in lieu of preparing a new well location plat for a plugging permit or assigned API number on the above well. The Office of Oil and Gas will not accept GPS coordinates that do not meet the following requirements:

- Datum: NAD 1983, Zone: 17 North, Coordinate Units: meters, Altitude: height above mean sea level (MSL) – meters.
- Accuracy to Datum – 3.05 meters
- Data Collection Method:  
Survey grade GPS \_\_\_\_: Post Processed Differential \_\_\_\_

Real-Time Differential \_\_\_\_

Mapping Grade GPS \_\_\_\_: Post Processed Differential \_\_\_\_

Real-Time Differential \_\_\_\_

- Letter size copy of the topography map showing the well location.**

I the undersigned, hereby certify this data is correct to the best of my knowledge and belief and shows all the information required by law and the regulations issued and prescribed by the Office of Oil and Gas.

Mike Ross  
Signature

President

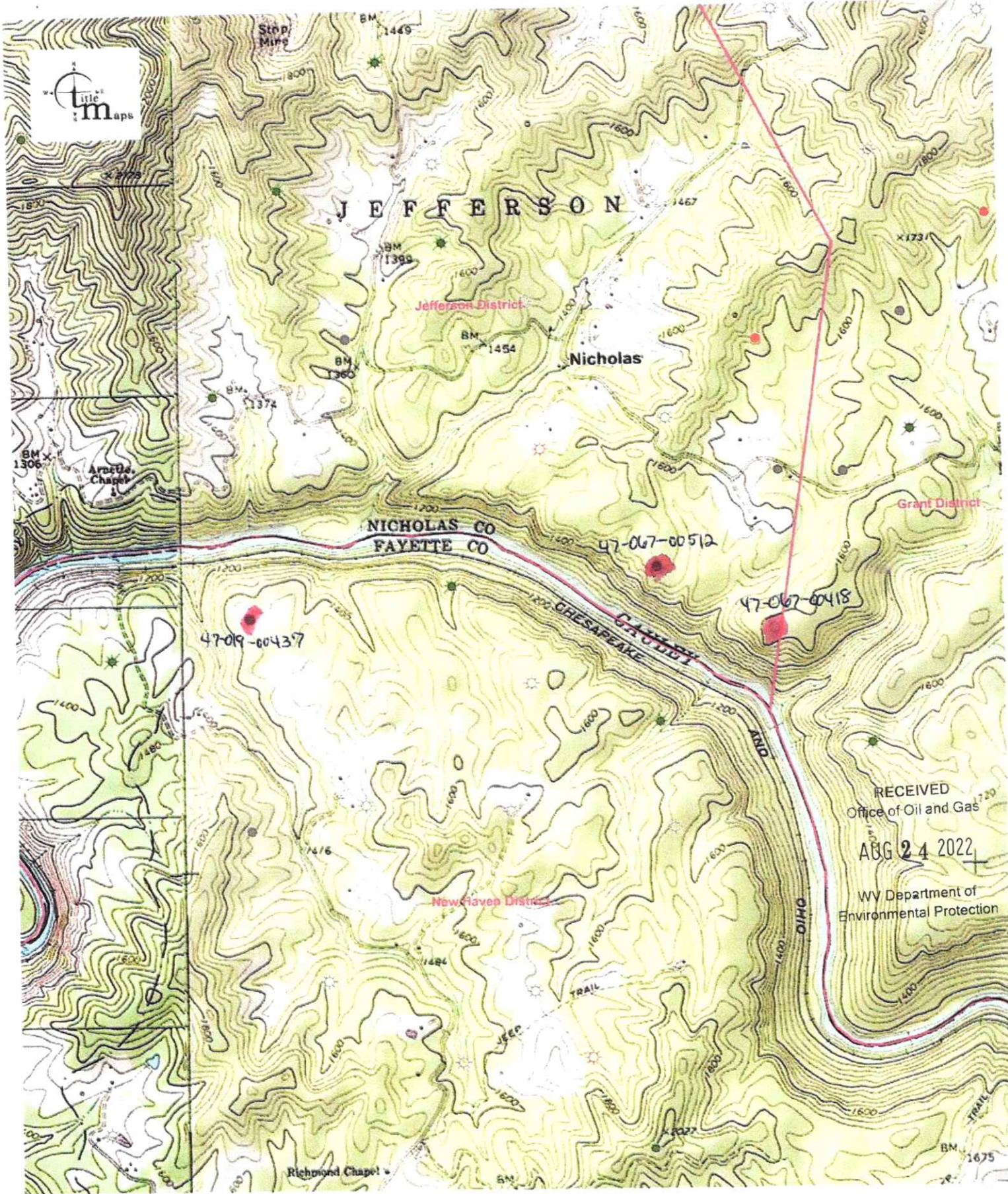
Title

Aug. 15, 2022

Date

RECEIVED  
Office of Oil and Gas  
AUG 24 2022  
WV Department of  
Environmental Protection

09/16/2022



RECEIVED  
 Office of Oil and Gas  
 AUG 24 2022  
 WV Department of  
 Environmental Protection

2000ft

Approximate Scale 1:24,000

08/09/2022 - 12:56:03 PM

Disclaimer: The map information shown is from various sources including but not limited to tax maps and agency web sites. The map information does not represent and should not be relied upon as a land survey or legal depiction of the property or information shown. Title Maps LLC does not warrant the accuracy or correctness of the map information shown hereon.

09/16/2022