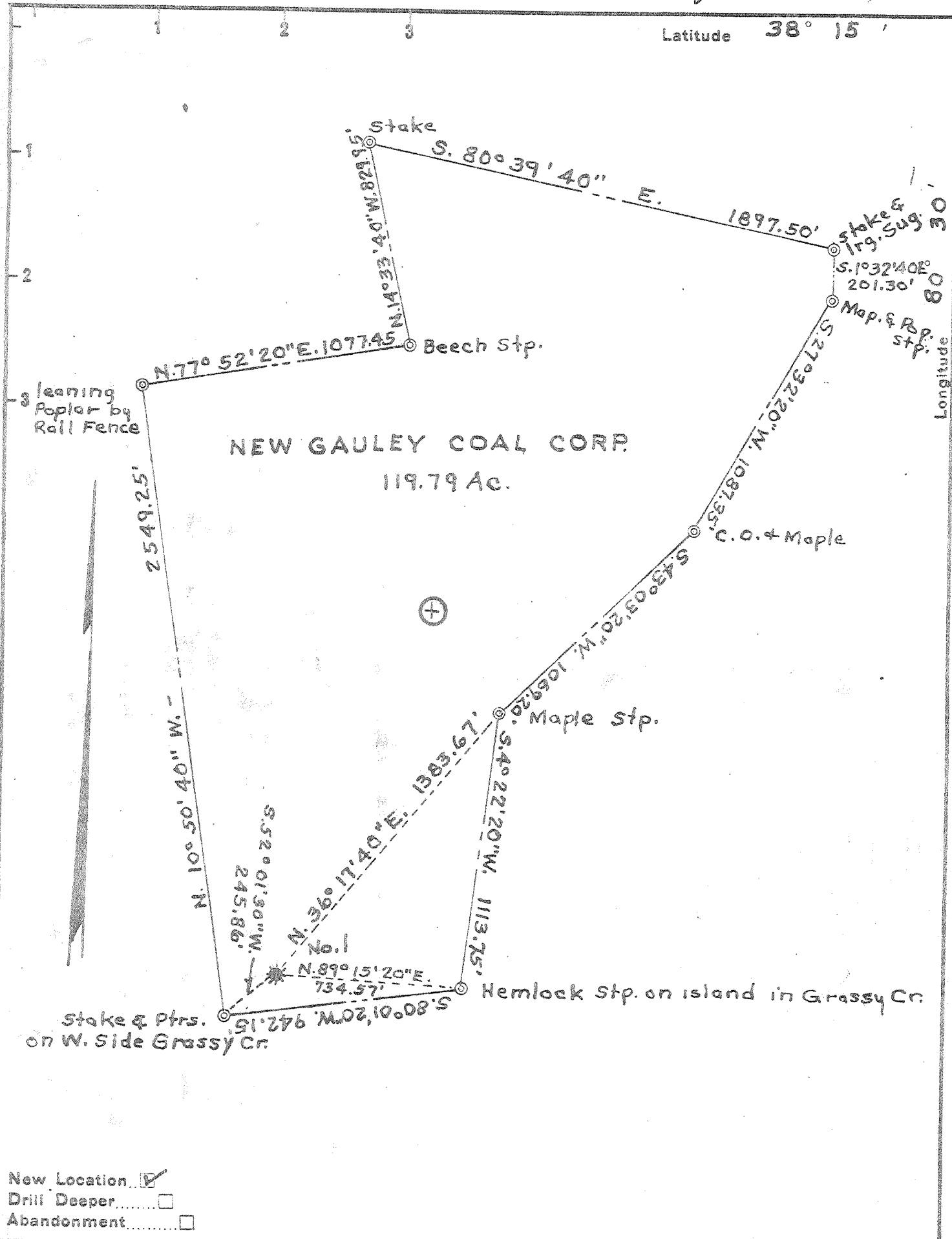


Latitude 38° 15'



New Location
 Drill Deeper
 Abandonment

Company ROTARY DEVELOPMENT CORP.
 Address 806 FIDELITY UNION LIFE BLDG.
 Farm W.L. EVANS Dallas, Texas
 Tract _____ Acres 119.79 Lease No. _____
 Well (Farm) No. 1 Serial No. 1
 Elevation (Spirit Level) 2399.58 NE
 Quadrangle Richwood, W. Va.
 County Nicholas District Kentucky
 Engineer B. G. Sampson
 Engineer's Registration No. 233
 File No. _____ Drawing No. _____
 Date 22 Oct. 56 Scale 1" = 500'

STATE OF WEST VIRGINIA
 DEPARTMENT OF MINES
 OIL AND GAS DIVISION
 CHARLESTON

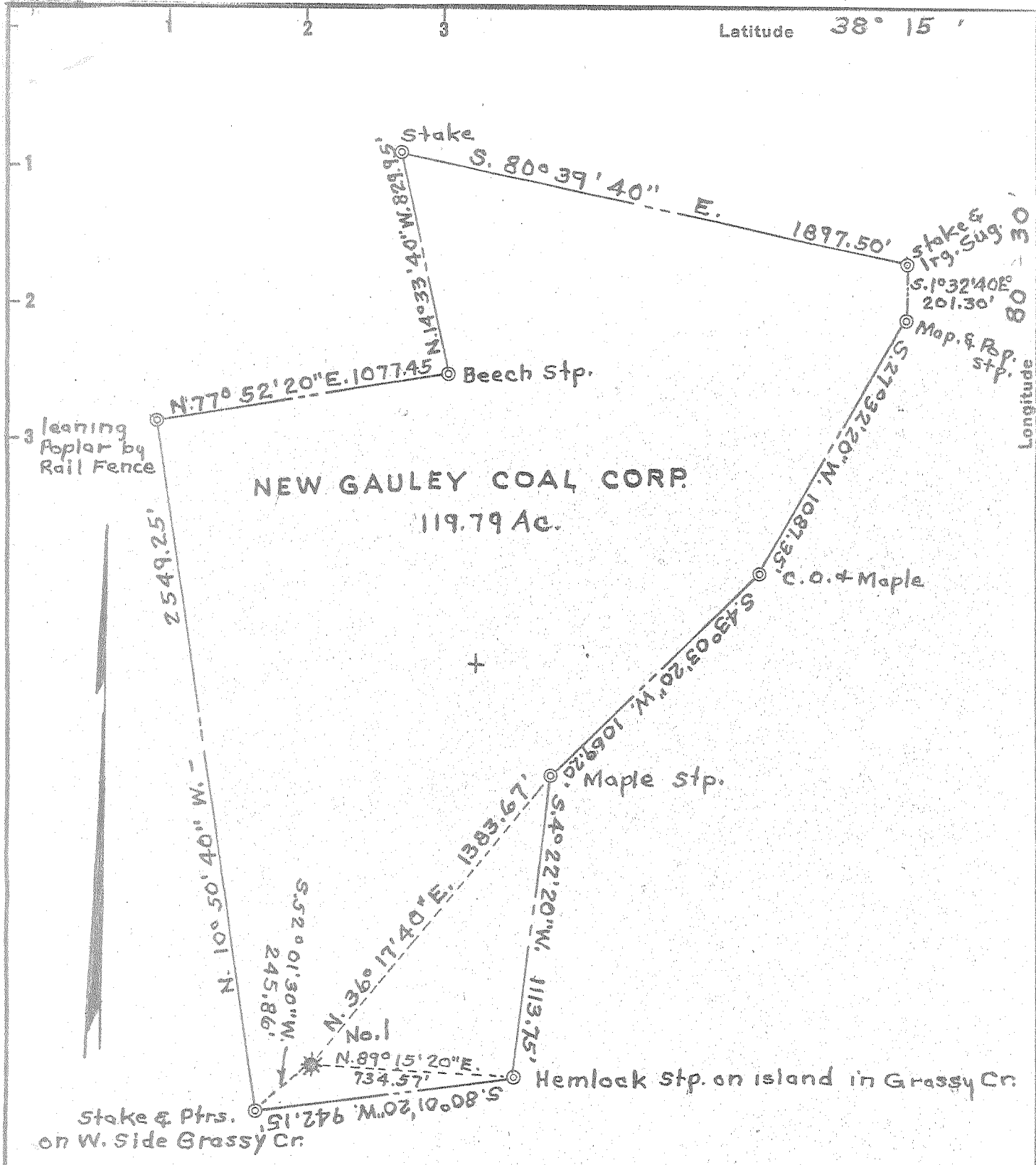
WELL LOCATION MAP
 FILE NO. NIC-193
 DRILLING CANCELED

+ Denotes location of well on United States Topographic Maps, scale 1 to 62,500, latitude and longitude lines being represented by border lines as shown.

- Denotes one inch spaces on border line of original tracing.

SEP 1 1978

Latitude 38° 15'



New Location...
 Drill Deeper.....
 Abandonment.....

Company ROTARY DEVELOPEMENT CORP.
 Address 806 FIDELITY UNION LIFE BLDG.
 Farm W.L. EVANS } Dallas, Texas
 Tract _____ Acres 119.79 Lease No. _____
 Well (Farm) No. 1 Serial No. 1
 Elevation (Spirit Level) 2399.58
 Quadrangle Richwood, W. Va. NE
 County Nicholas District Kentucky
 Engineer B. G. Sampson
 Engineer's Registration No. 233
 File No. _____ Drawing No. _____
 Date 22 Oct '56 Scale 1" = 500'

STATE OF WEST VIRGINIA
 DEPARTMENT OF MINES
 OIL AND GAS DIVISION
 CHARLESTON

WELL LOCATION MAP
 FILE NO. Nic-193

+ Denotes location of well on United States Topographic Maps, scale 1 to 62,500, latitude and longitude lines being represented by border lines as shown.

- Denotes one inch spaces on border line of original tracing.