

2.38 S

2.76 W

1

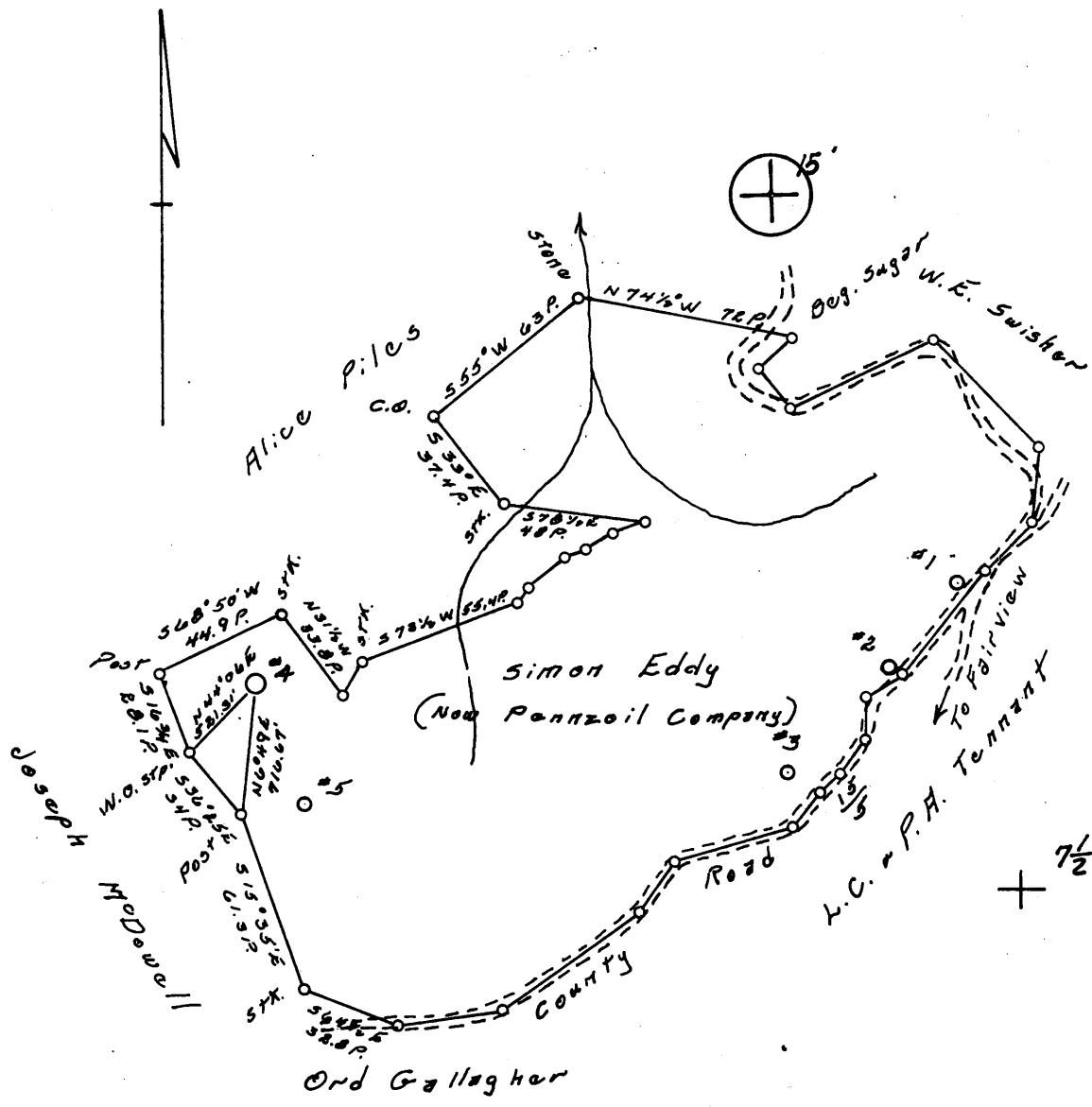
2

3

LONGITUDE 80° 17' 30"

(15')

LONGITUDE 12,500'



Minimum Error of Closure 1' in 200'

Source of Elevation Company survey stations tied into U.S.G.S. network

- Fracture
- New Location
- Drill Deeper
- Abandonment  5/16/77

I, the undersigned, hereby certify that this map is correct to the best of my knowledge and belief and shows all the information required by paragraph 6 of the rules and regulations of the oil and gas section of the mining laws of West Virginia.

Signed: *Ronald A. Brown*  
 Squares: N S E W

Map No.

Company	Fairmont Operations Consolidation Coal Company
Address	P.O. Box 1632, Fairmont, W. Va. 26554
Farm	Simon Eddy ( <del>now South Penn Oil</del> )
Tract	Acres 243 Lease No.
Well (Farm) No.	4 Serial No. 4109
Elevation (Spirit Level)	1444.82 EC
Quadrangle	Wadestown 7-1/2', <u>Mannington 15'</u>
County	Monongalia District Battelle
Engineer	<i>Ronald A. Brown</i>
Engineer's Registration No.	2901
File No.	Drawing No.
Date	May 9, 1977 Scale 1" = 1000'

STATE OF WEST VIRGINIA  
 DEPARTMENT OF MINES  
 OIL AND GAS DIVISION  
 CHARLESTON

WELL LOCATION MAP  
 FILE NO. MON-711-A

+ Denotes location of well on United States Topographic Maps, scale 1 to 62,500, latitude and longitude lines being represented by border lines as shown.  
 - Denotes one inch spaces on border line of original tracing.  
 47-061