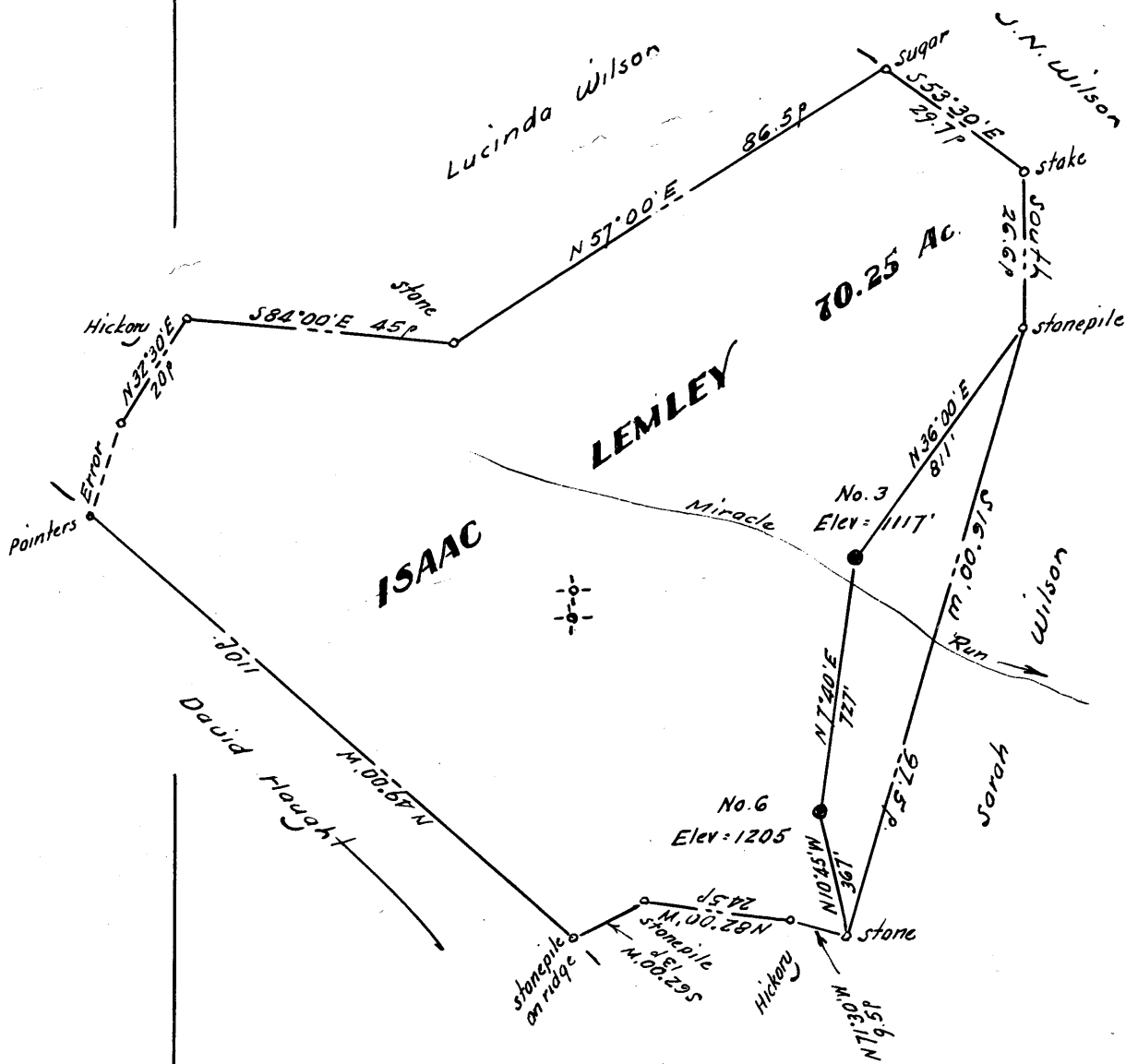


#3	5.61 S
	3.87 W
#6	5.76 S
	3.91 W



New Location
 Drill Deeper
 Abandonment

Company P. & J. DEVELOPMENT CO.
 Address Hamlin, West Va.
 Farm Isaac Lemley
 Tract _____ Acres 70.25 Lease No. _____
 Well (Farm) No. 3 & 6 Serial No. _____
 Elevation (Spirit Level) No 3 = 1117 No 6 = 1205
 Quadrangle Blacksville
 County Monongalia District Clay
 Engineer W. H. H. S.
 Engineer's Registration No. 1227
 File No. _____ Drawing No. _____
 Date Dec. 19 1962 Scale 1" = 300' = 495'

STATE OF WEST VIRGINIA
 DEPARTMENT OF MINES
 OIL AND GAS DIVISION
 CHARLESTON

WELL LOCATION MAP

FILE NO. Mon - 658-A - # 3
Mon - 659-A - # 6

+ Denotes location of well on United States Topographic Maps, scale 1 to 62,500, latitude and longitude lines being represented by border lines as shown.

- Denotes one inch spaces on border line of original tracing.

