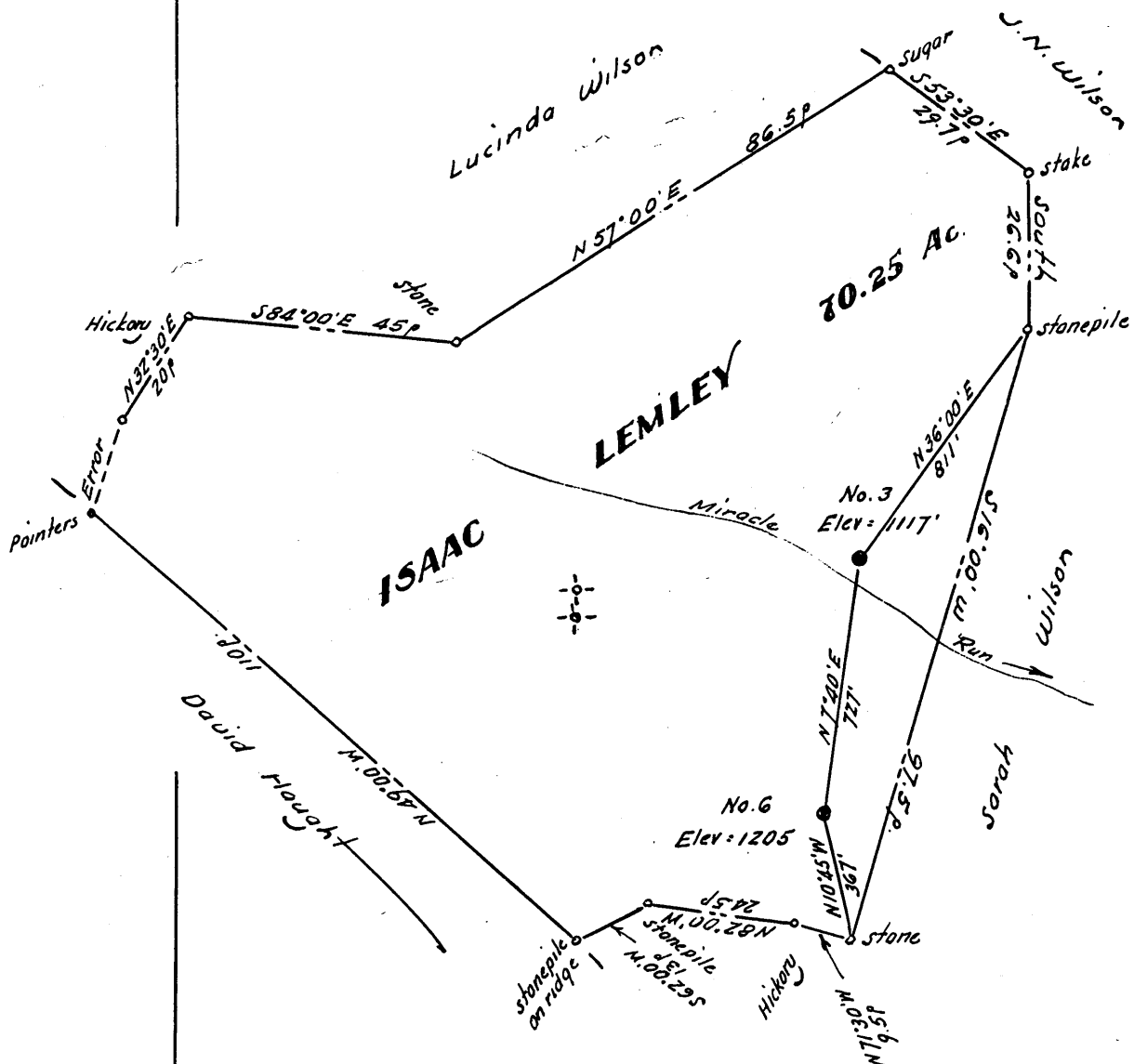


| | |
|----|--------|
| #3 | 5.61 S |
| | 3.87 W |
| #6 | 5.76 S |
| | 3.91 W |



New Location ..
 Drill Deeper
 Abandonment.....

Company P. & J. DEVELOPMENT CO.
 Address Hamlin, West Va.
 Farm 1500c Lemley
 Tract _____ Acres 70.25 Lease No. _____
 Well (Farm) No. 3 & 6 Serial No. _____
 Elevation (Spirit Level) No. 3: 1117 No. 6: 1205
 Quadrangle Blacksville
 County Monongalia District Clay
 Engineer W. H. Hart
 Engineer's Registration No. 1227
 File No. _____ Drawing No. _____
 Date Dec. 19, 1962 Scale 1" = 300' = 495'

STATE OF WEST VIRGINIA
 DEPARTMENT OF MINES
 OIL AND GAS DIVISION
 CHARLESTON

WELL LOCATION MAP

FILE NO. Mon-658-A-#3
Mon-659-A-#6

+ Denotes location of well on United States Topographic Maps, scale 1 to 62,500, latitude and longitude lines being represented by border lines as shown.

- Denotes one inch spaces on border line of original tracing.

