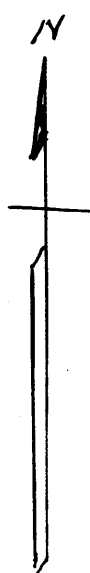
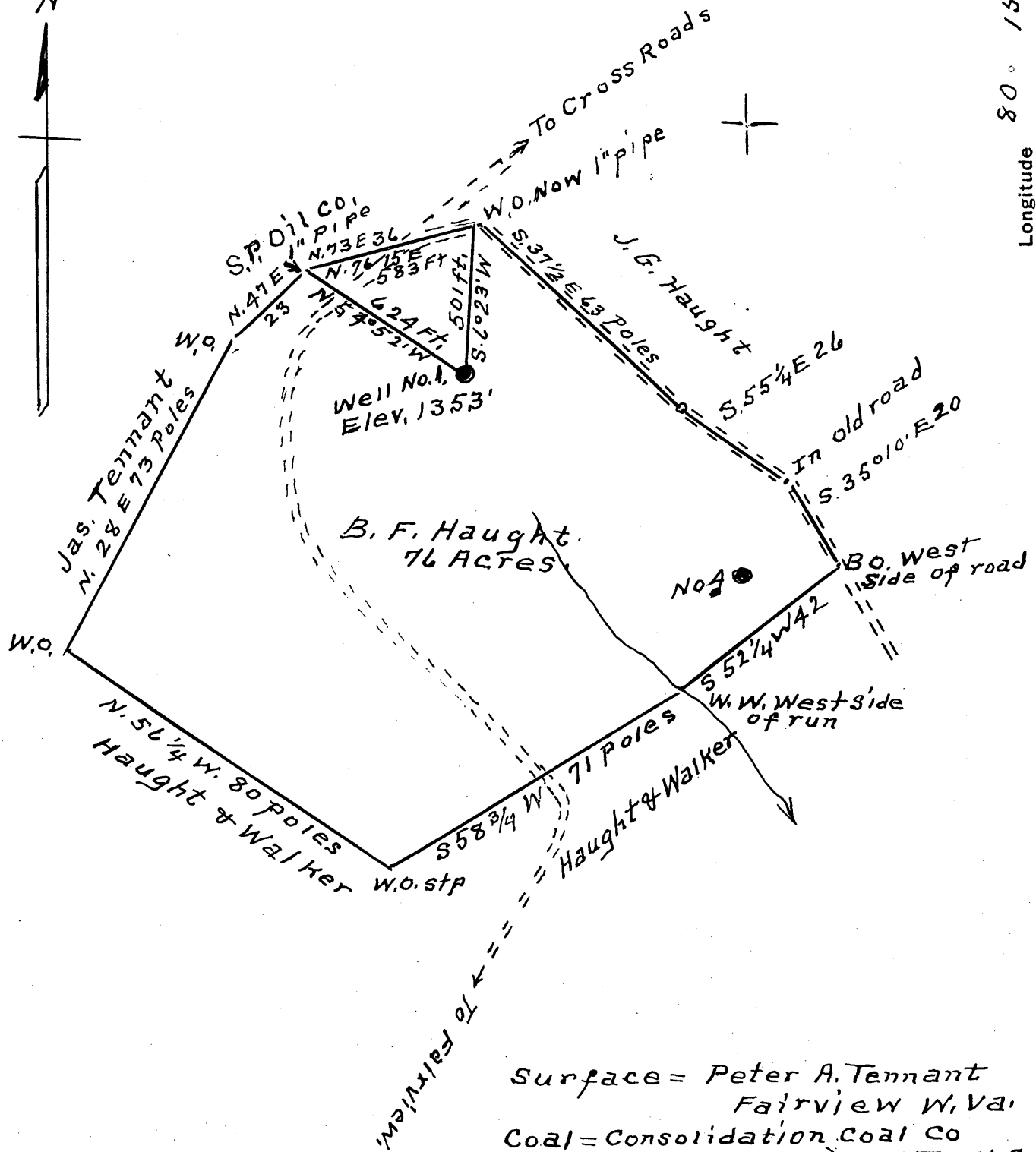


Latitude 39° 40'

2.31 S
1.98 N



Longitude 80° 15'



Surface = Peter A. Tennant
Fairview W. Va.
Coal = Consolidation Coal Co
Wheeling Savings & Trust Co.
% B. G. Sampson
Fairmont W. Va.

- New Location
- Drill Deeper
- Abandonment

Company Cecil Chisler & Son
 Address R # 2 Fairview W. Va.
 Farm B. F. Haught
 Tract 1 Acres 76 Lease No. _____
 Well (Farm) No. ONE Serial No. _____
 Elevation (Spirit Level) 1353'
 Quadrangle MANNINGTON
 County Monongalia District Battelle
 Engineer A. L. Headley
 Engineer's Registration No. 2021
 File No. _____ Drawing No. _____
 Date 7-12-62 Scale 1" = 500'

STATE OF WEST VIRGINIA
 DEPARTMENT OF MINES
 OIL AND GAS DIVISION
 CHARLESTON

WELL LOCATION MAP
 FILE NO. MON-653-A

+ Denotes location of well on United States Topographic Maps, scale 1 to 62,500, latitude and longitude lines being represented by border lines as shown.

- Denotes one inch spaces on border line of original tracing.

.....District, Monongalia County, W. Va.
By South Penn Oil Co.
On Flat Run.
Completed in 1898.

	Top.	Bottom.
Pittsburgh Coal	1052	
Big Injun Sand	2100	- 2525
50-Ft. Sand	2957	
Stray Sand	3215	
Gordon Sand (1st pay, 3275'; 2nd pay, 3283')	3265	
Total depth		3293