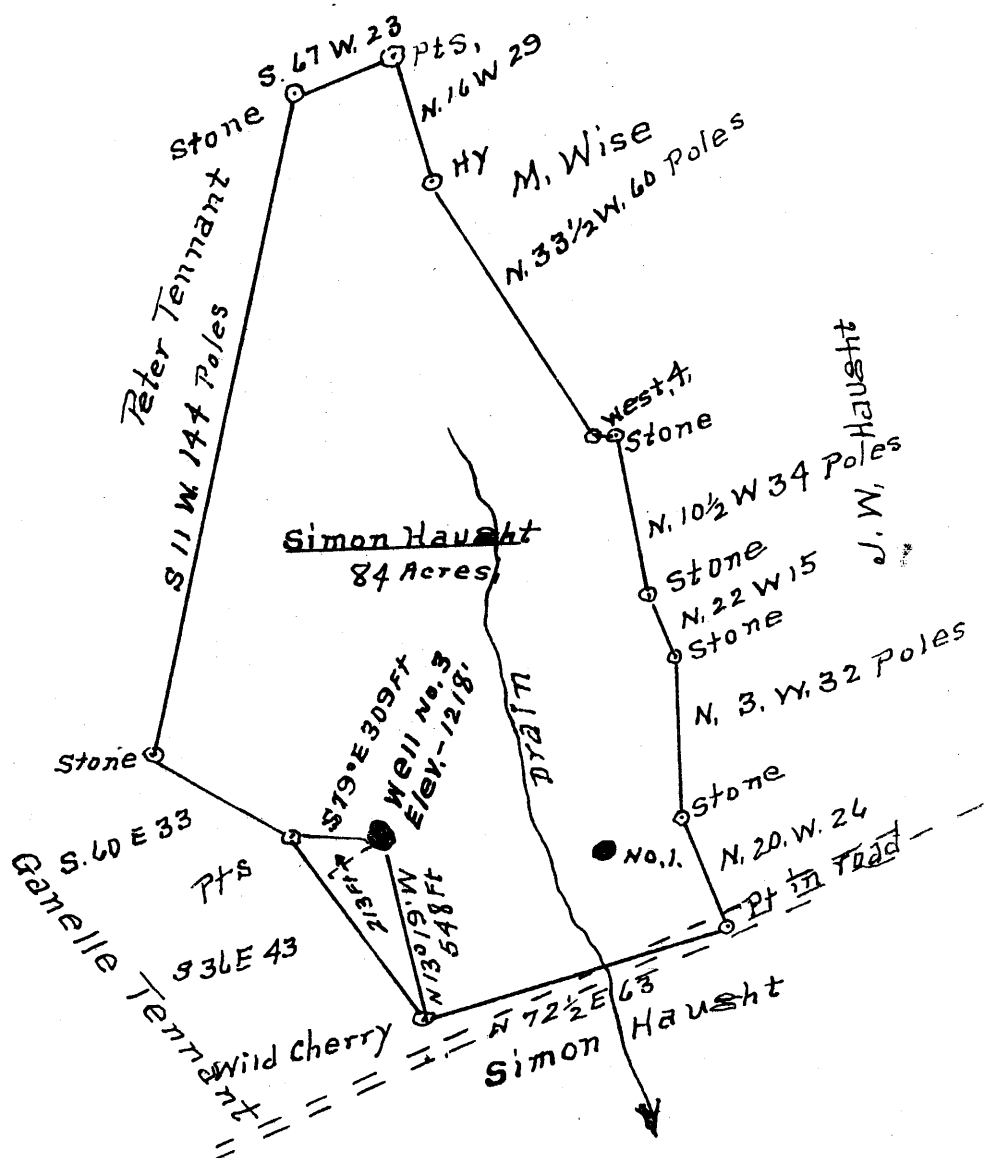


Latitude 39° 40'

1.623  
1.32 W

Longitude 80° 15'



Surface: Wheeling Dollar Savings & Trust Co  
 Wheeling W. Va.  
 Coal: Mountaineer Coal Co.  
 c/o Ray Henderson  
 Box 1632 Fairmont, W. Va.

New Location   
 Drill Deeper   
 Abandonment

Company Cecil Chisler & Son  
 Address R. #. 2 Fairview W Va  
Lewis Gump Lease  
 Farm Simon Haught  
 Tract 1 Acres 84 Lease No. \_\_\_\_\_  
 Well (Farm) No. 3 Serial No. \_\_\_\_\_  
 Elevation (Spirit Level) 1218  
 Quadrangle Mannington  
 County Monongalia District Battelle  
 Engineer A. L. Headley  
 Engineer's Registration No. 2021  
 File No. \_\_\_\_\_ Drawing No. \_\_\_\_\_  
 Date Oct 3, 1961 Scale 1" = 40 poles

STATE OF WEST VIRGINIA  
 DEPARTMENT OF MINES  
 OIL AND GAS DIVISION  
 CHARLESTON

**WELL LOCATION MAP**  
 FILE NO. Men-649-A

+ Denotes location of well on United States Topographic Maps, scale 1 to 62,500, latitude and longitude lines being represented by border lines as shown.  
 - Denotes one inch spaces on border line of original tracing.

LATITUDE 39° 40' 00"

50° 51' 08"

LONGITUDE

75  
+  
70228

7'5 OGIS topo location

7.5' 10C	<u>1.39S</u>	15' 10C	<u>1.39S</u>
	<u>1.72W</u>	(calc.)	<u>1.72W</u>

#121 in 1912 Co Rpt

Company Eastman et al

Farm Lewis Gump 3

Quad Wadestown (margin EC)

County Monongalia

District Battelle

WELL LOCATION MAP

File No. 061-70228