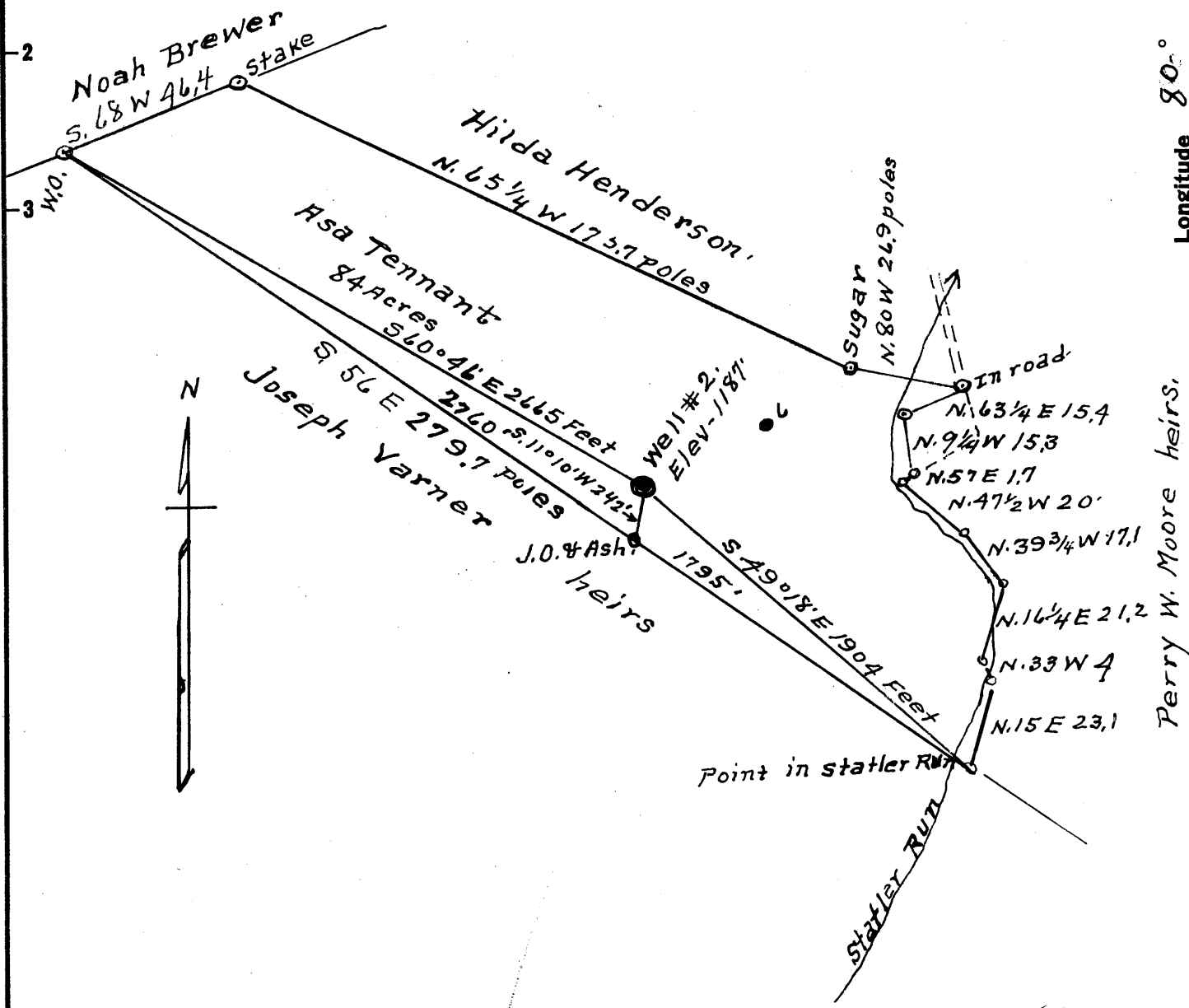


Latitude 79° 40'



.465  
.76 W

Longitude 80° 10'



0.8 W

surface = Ada Michael 0.480  
Rivesville W Va  
Coal = Louie Eberhart  
R # 3. Fairview W. Va.

NOV 23 1959

New Location   
Drill Deeper   
Abandonment

Company Dunn-Mar Oil & Gas. Co.  
 Address Waynesburg Pa  
 Farm Asa Tennant  
 Tract 1 Acres 84 Lease No. \_\_\_\_\_  
 Well (Farm) No. 2 Serial No. \_\_\_\_\_  
 Elevation (Spirit Level) 1187'  
 Quadrangle Blacksville  
 County Monongalia District Clay  
 Engineer A. L. Headley  
 Engineer's Registration No. 2021  
 File No. \_\_\_\_\_ Drawing No. \_\_\_\_\_  
 Date 10-5-59 Scale 1" = 660'

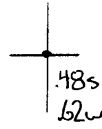
STATE OF WEST VIRGINIA  
DEPARTMENT OF MINES  
OIL AND GAS DIVISION  
CHARLESTON

WELL LOCATION MAP  
FILE NO. 770N-636-A

+ Denotes location of well on United States Topographic Maps, scale 1 to 62,500, latitude and longitude lines being represented by border lines as shown.

- Denotes one inch spaces on border line of original tracing.

Latitude



Longitude

Topo Location

7.5' Loc. \_\_\_\_\_ 15' Loc. \_\_\_\_\_  
 \_\_\_\_\_ (calc.) \_\_\_\_\_

Company Dumson-Mas O&G

Farm Asa Tennant #2

15' Quad \_\_\_\_\_  
(sec.)

7.5' Quad Blacksville

District Clay

WELL LOCATION PLAT

County 061 Permit 30636



660

STATE OF WEST VIRGINIA  
DEPARTMENT OF MINES  
OIL AND GAS DIVISION

Quadrangle Blacksville

Permit No. 660-1

WELL RECORD

Oil or Gas Well Oil  
(KIND)

Company Dunn-Mar Oil and Gas Company  
 Address Waynesburg, Pennsylvania  
 Farm Asa Termant Acres 84  
 Location (waters) Jakes Run  
 Well No. 2 Elev. 1187  
 District Clay County Monongalia  
 The surface of tract is owned in fee by Ada Michael  
 Address Rivesville, W. Va.  
 Mineral rights are owned by Louie Eberhart  
 R. D. #3  
 Address Fairview, W. Va.  
 Drilling commenced No date  
 Drilling completed 11-10-94  
 Date Shot 6-13-07 From 2080 To 2089  
 With 70 qts. nitro-glycerine  
 Open Flow /10ths Water in \_\_\_\_\_ Inch  
 /10ths Merc. in \_\_\_\_\_ Inch  
 Volume \_\_\_\_\_ Cu. Ft.  
 Rock Pressure \_\_\_\_\_ lbs. \_\_\_\_\_ hrs.  
 Oil no data bbls., 1st 24 hrs.  
 WELL ACIDIZED \_\_\_\_\_  
 WELL FRACTURED \_\_\_\_\_

Casing and Tubing	Used in Drilling	Left in Well	Packers
Size			
16			Kind of Packer _____
13			
10			Size of _____
8 3/4		<u>812</u>	
6 5/8			Depth set _____
5 3/16	<u>1966</u>	<u>1966</u>	
3			Perf. top _____
2			Perf. bottom _____
Liners Used			Perf. top _____
			Perf. bottom _____

CASING CEMENTED \_\_\_\_\_ SIZE \_\_\_\_\_ No. Ft. \_\_\_\_\_ Date \_\_\_\_\_

COAL WAS ENCOUNTERED AT 675 FEET 0 INCHES  
 \_\_\_\_\_ FEET \_\_\_\_\_ INCHES \_\_\_\_\_ FEET \_\_\_\_\_ INCHES  
 \_\_\_\_\_ FEET \_\_\_\_\_ INCHES \_\_\_\_\_ FEET \_\_\_\_\_ INCHES

RESULT AFTER TREATMENT \_\_\_\_\_

ROCK PRESSURE AFTER TREATMENT \_\_\_\_\_

Fresh Water \_\_\_\_\_ Feet Salt Water \_\_\_\_\_ Feet

Formation	Color	Hard or Soft	Top	Bottom	Oil, Gas or Water	Depth	Remarks
Pgh. Coal	Black	Soft	675	683			
Big Injun	Grey	Hard	2000				
					<u>Oil</u>	<u>2083</u>	
<b>Total Depth</b>			<b>2102</b>				

*Notes:*  
 Apr 19-69  
 10' to 850'  
 10' to 840'  
 10' to 730'  
 10' to 710'  
 10' to 713'  
 10' to 650'

RECEIVED  
 WEST VIRGINIA  
 DEPT. OF MINES  
 AUG 2 1961



Oil

WELL RECORD

J.H. McDermott Oil

COMPANY

Record of Well No. 2 on Asa Tennant Farm 200 Acres  
 Field Clay District Monongalia County W. Va. State  
 Rig Commenced Aug. 3d/1894 19 Completed Aug. 25th. 1894 19  
 Drilling Commenced Aug. 27th. 1894 19 Completed Nov. 10th. 1894 19  
 Cost Per Foot \_\_\_\_\_ Contractor Orcutt Bros Address \_\_\_\_\_  
 Drillers Names \_\_\_\_\_

CONDUCTOR AND CASING USED IN DRILLING

Conductor 13 inch 10 inch 8 1-4 inch 6 5-8 inch 5 3-16 inch 4 inch 3 inch 2 inch

CONDUCTOR AND CASING LEFT IN WELL

Conductor 13 inch 10 inch 8 3-4 inch 6 5-8 inch 5 3-16 inch 4 inch 3 inch 2 inch

Formation	Top	Bottom	Thickness	Formation	Top	Bottom	Thickness
GRAVEL OR				FORMATION			
QUICK SAND				SQUAW			
FIRST WATER				BEREA			
BLUFF SAND				GANTZ			
NATIVE COAL				FIFTY FOOT			
WBG. COAL				THIRTY FOOT			
MAPEL COAL				GORDON STRAY			
PGE. COAL	<u>675</u>			GORDON			
MURPHY SAND				FOURTH			
LITTLE DKRD.				FIFTH			
BIG DKRD.				BAYARD			
GAS SAND				ELIZABETH			
FIRST SALT SAND							
SECOND SALT SAND							
LITTLE LIME							
PENCIL CAVE							
BIG LIME							
BIG INJUN	<u>2000</u>						
<u>Oil</u>	<u>2083</u>						
				TOTAL DEPTH	<u>2102</u>		

Gas Test Open  
 Minute Test  
 Oil Production

Well Tubed with \_\_\_\_\_ Tubing Packer Set in \_\_\_\_\_ Sand, Top of Packer, \_\_\_\_\_ Perforation  
 Well Tubed with 2077 Tubing 6 Ft. working bbl. 19 Anchor, Perforation at, 2089 Air Hole 2087

SHOT RECORD

Date	Amount	Size of Shell	Top	Bottom	Oil on Shot	Results
Dec. 12th. 1896	10 qts.					
Dec. 15" 1897	20 "					
Feby 28" 1899	30 "					
Nov. 27" 1900	50 "	1 11ft. 1 8ft.	2081	2094		10 bbps.
Sept. 25 1905		20ft.	2083			
June 13 1907	70 "	2 3 1/4, 1 7, 1 15,	2080	2089		2 1/2 "

REMARKS: