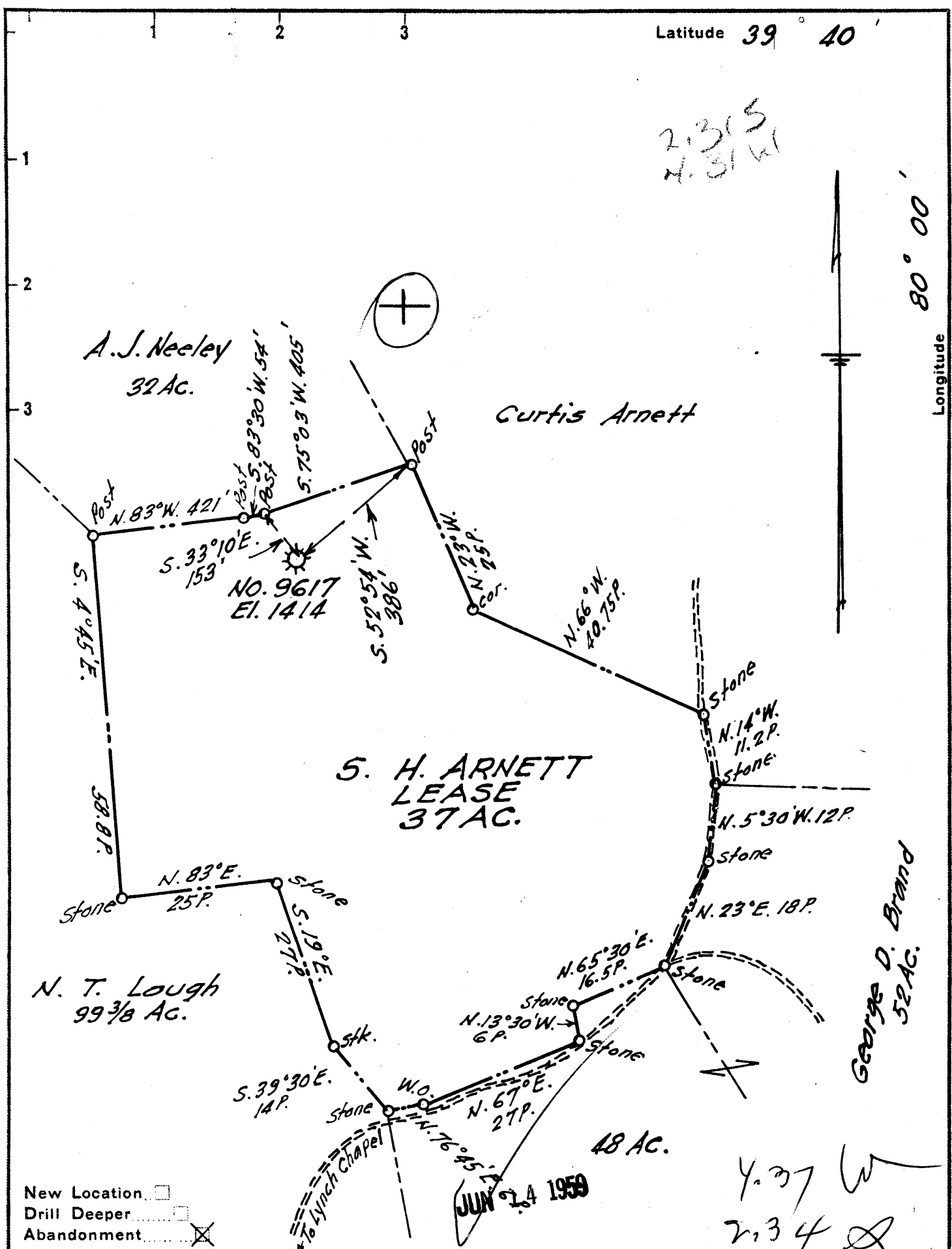


Latitude 39° 40'

21315
N. 31 W

Longitude 80° 00'



- New Location
- Drill Deeper
- Abandonment

JUN 24 1959

Y. 37 W
2134

Company A. M. SNIDER

Address 60 Sunset Dr., Fairmont, W. Va.

Farm S. H. Arnett

Tract _____ Acres 37 Lease No. 61916

Well (Farm) No. _____ Serial No. 9617

Elevation (Spirit Level) 1414

Quadrangle Blacksville

County Monongalia District Grant

Engineer Doris H. Huffman

Engineer's Registration No. 1868

File No. A. M. S. Drawing No. 1

Date April 1, 1958 Scale 1" = 20 P.

STATE OF WEST VIRGINIA
DEPARTMENT OF MINES
OIL AND GAS DIVISION
CHARLESTON

WELL LOCATION MAP
FILE NO. 770N-625-A

+ Denotes location of well on United States Topographic Maps, scale 1 to 62,500, latitude and longitude lines being represented by border lines as shown.

- Denotes one inch spaces on border line of original tracing.

S. H. ARNETT NO. 9617 -

A. M. SNIDER -

Mon-625-A