

39°40'00"

Latitude

+

	.83s
	.88w

Longitude

Topo Location

7.5' Loc. _____ 15' Loc. _____
 _____ (calc.) _____

Company South Penn Nat Gas Co

Farm A&M Tenant #1

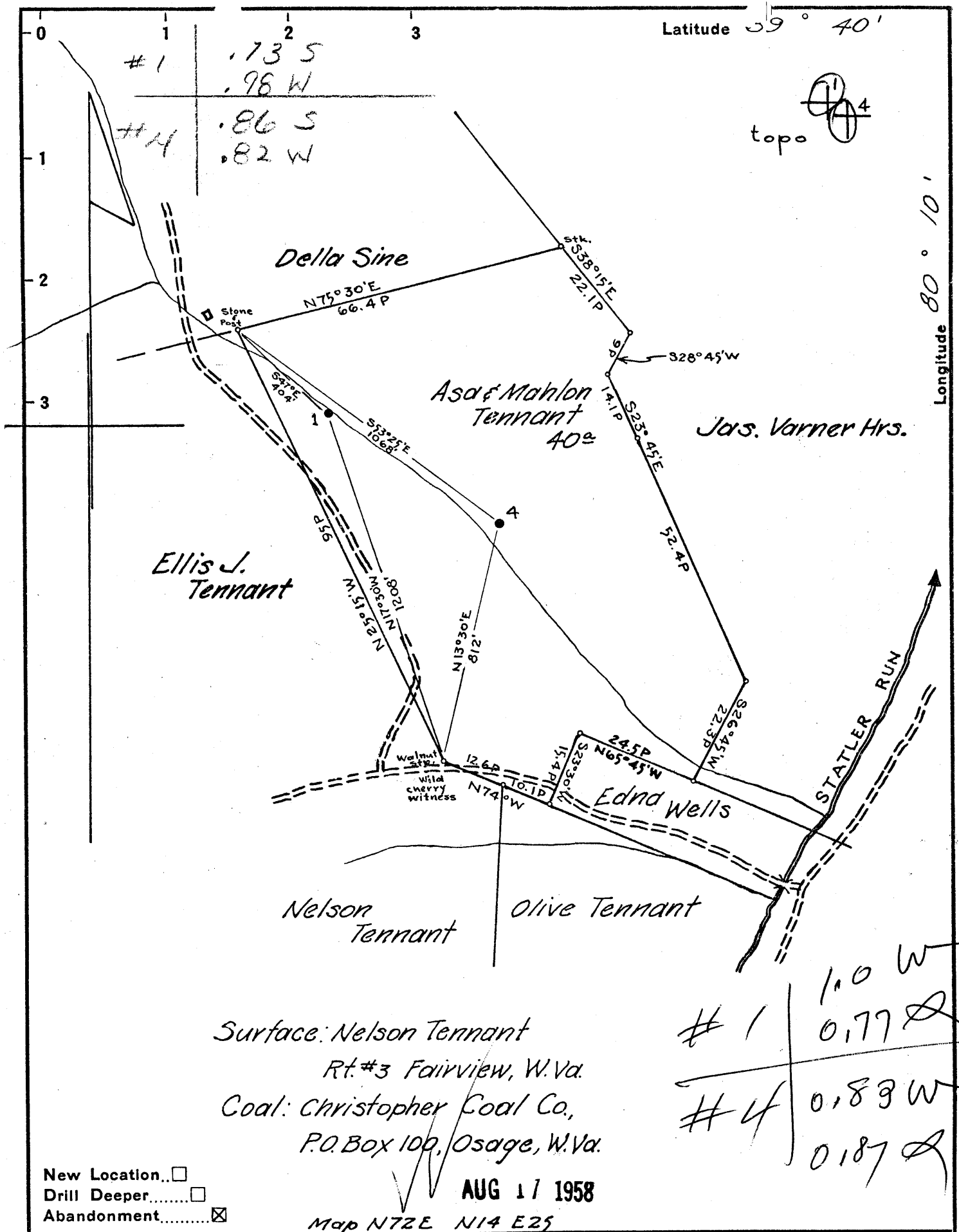
15' Quad _____
(sec.)

7.5' Quad Blacksville

District Clay

WELL LOCATION PLAT

County Obi Permit 30615



Surface: Nelson Tennant
 Rt. #3 Fairview, W. Va.
 Coal: Christopher Coal Co.,
 P.O. Box 100, Osage, W. Va.

New Location...
 Drill Deeper...
 Abandonment...

AUG 11 1958

Map NTZE N14 E25

Company South Penn Natural Gas Co.
 Address Parkersburg, W. Va.
 Farm A. & M. Tennant
 Tract _____ Acres 40 Lease No. 12663
 Well (Farm) No. 1 & 4 Serial No. _____
 Elevation ^{Casing hd.} (Spirit Level) (1) 1056.64 (4) 1041.36
 Quadrangle Blacksville
 County Monongalia District Clay
 Engineer A. B. Hillbert
 Engineer's Registration No. 2534
 File No. _____ Drawing No. _____
 Date July 21, 1958 Scale 1" = 400'

STATE OF WEST VIRGINIA
 DEPARTMENT OF MINES
 OIL AND GAS DIVISION
 CHARLESTON

WELL LOCATION MAP
 FILE NO. MON-615-A-#1
MON-616-A-#4

+ Denotes location of well on United States Topographic Maps, scale 1 to 62,500, latitude and longitude lines being represented by border lines as shown.

- Denotes one inch spaces on border line of original tracing.