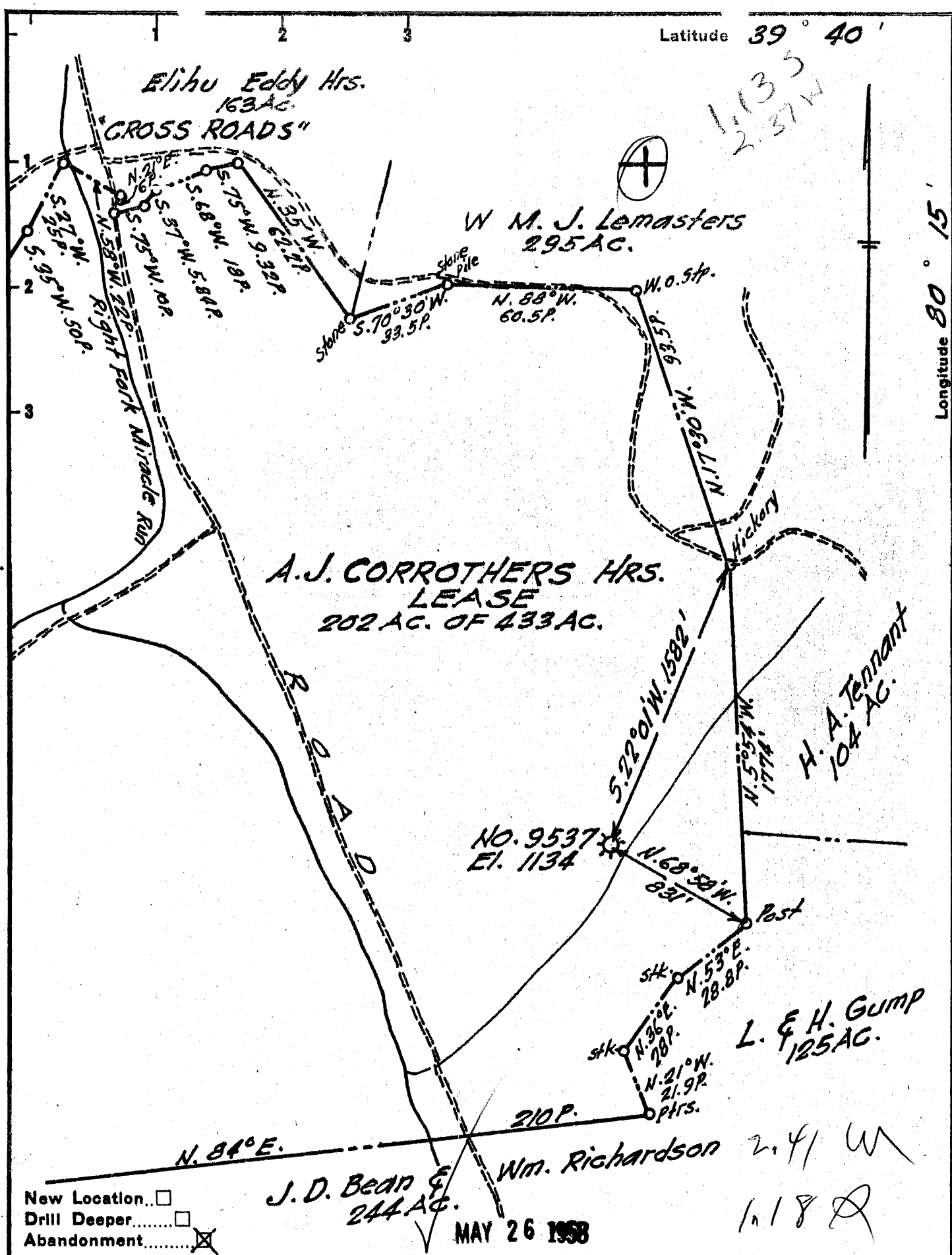


Latitude 39° 40'

Longitude 80° 15'



New Location
 Drill Deeper
 Abandonment

MAY 26 1958

2.41 W
 1.18 R

Company A. M. SNIDER
 Address 60 Sunset Dr., Fairmont, W. Va.
 Farm A.J. Corrothers Hrs.
 Tract _____ Acres 202 Lease No. 61840
 Well (Farm) No. _____ Serial No. 9537
 Elevation (Spirit Level) 1134
 Quadrangle Mannington
 County Monongalia District Battle
 Engineer Marie H. Highman
 Engineer's Registration No. 1868
 File No. A.M.S. Drawing No. 1
 Date April 1, 1958 Scale 1" = 40 P

STATE OF WEST VIRGINIA
 DEPARTMENT OF MINES
 OIL AND GAS DIVISION
 CHARLESTON

WELL LOCATION MAP
 FILE NO. MON-614-A

+ Denotes location of well on United States Topographic Maps, scale 1 to 62,500, latitude and longitude lines being represented by border lines as shown.
 - Denotes one inch spaces on border line of original tracing.

A. J. CORROTHERS HEIRS No. 9537 - A. M. SNIDER - MON-614-A