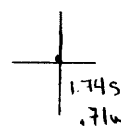


Latitude

Longitude



Topo Location

7.5' Loc. \_\_\_\_\_ 15' Loc. \_\_\_\_\_  
 \_\_\_\_\_ (calc.) \_\_\_\_\_

Company South Penn Nat Gas

Farm Peter B Tennant #1

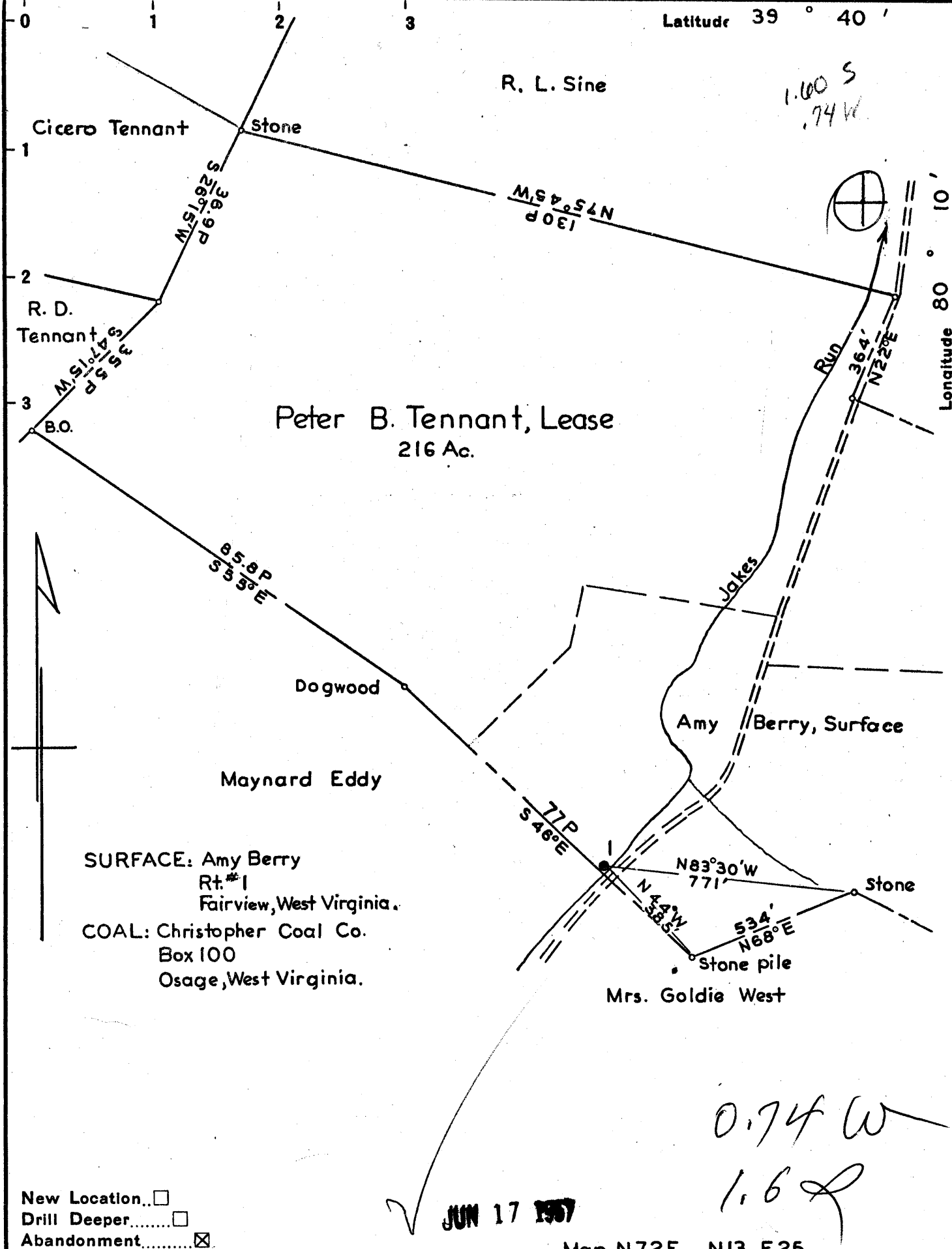
15' Quad \_\_\_\_\_  
(sec.)

7.5' Quad Blacksville

District Clay

WELL LOCATION PLAT

County 061 Permit 30609



Company South Penn Natural Gas Co  
 Address Parkersburg, West Virginia.  
 Farm Peter B. Tennant  
 Tract \_\_\_\_\_ Acres 216 Lease No. 7943  
 Well (Farm) No. 1 Serial No. \_\_\_\_\_  
 Elevation (Spirit Level) 1033.35 Ground  
 Quadrangle Blacksville  
 County Monongalia District Clay  
 Engineer Mrs. S. Haydel  
 Engineer's Registration No. 1429  
 File No. \_\_\_\_\_ Drawing No. \_\_\_\_\_  
 Date May 20, 1957 Scale 1" = 400'

STATE OF WEST VIRGINIA  
 DEPARTMENT OF MINES  
 OIL AND GAS DIVISION  
 CHARLESTON

**WELL LOCATION MAP**  
 FILE NO. MON-609-A

+ Denotes location of well on United States Topographic Maps, scale 1 to 62,500, latitude and longitude lines being represented by border lines as shown.  
 - Denotes one inch spaces on border line of original tracing.



STATE OF WEST VIRGINIA  
DEPARTMENT OF MINES  
OIL AND GAS DIVISION

657

WELL RECORD

Permit No. 609-A

Oil or Gas Well Gas

(KIND)

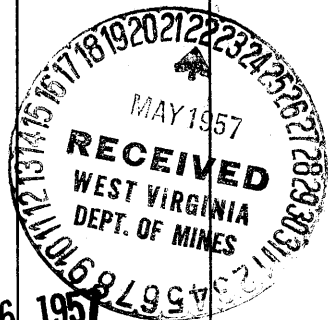
Company **SOUTH PENN NATURAL GAS COMPANY**  
 Address **P. O. Box 1200, Parkersburg, W. Va.**  
 Farm **Peter B. Tomash** Acres **216**  
 Location (waters) \_\_\_\_\_  
 Well No. **1** Elev. **1033.99**  
 District **Clay** County **Monongalia**  
 The surface of tract is owned in fee by **Ray Berry**  
 Address **R. #1, Fairview, W. Va.**  
 Mineral rights are owned by **Ray Berry, et al.**  
 Address **Fairview, W. Va.**  
 Drilling commenced **April 8, 1952**  
 Drilling completed **June 27, 1952 D.D. Mar. 28, 1953**  
 Date Shot **Yes** From \_\_\_\_\_ To \_\_\_\_\_  
 With \_\_\_\_\_  
 Open Flow **9** /10ths Water in \_\_\_\_\_ Inch  
 \_\_\_\_\_ /10ths Merc. in \_\_\_\_\_ Inch  
 Volume \_\_\_\_\_ Cu. Ft.  
 Rock Pressure \_\_\_\_\_ lbs. \_\_\_\_\_ hrs.  
 Oil \_\_\_\_\_ bbls., 1st 24 hrs.  
 Fresh water \_\_\_\_\_ feet \_\_\_\_\_ feet  
 Salt water \_\_\_\_\_ feet \_\_\_\_\_ feet

Casing and Tubing	Used in Drilling	Left in Well	Packers
Size			
16			Kind of Packer _____
13			<b>O.W.S. Anchor</b>
10	<b>525'</b>	<b>525'</b>	Size of _____
8 1/2	<b>700'</b>	<b>700'</b>	<b>2766'</b>
6 1/2	<b>1940'</b>	<b>1940'</b>	Depth set _____
5 3/16	<b>207'</b>	<b>207'</b>	
3			Perf. top _____
2			Perf. bottom _____
Liners Used			Perf. top _____
<b>4 1/2" - 20'</b>	<b>6 1/2" - 30'</b>		Perf. bottom _____

CASING CEMENTED \_\_\_\_\_ SIZE \_\_\_\_\_ No. Ft. \_\_\_\_\_ Date \_\_\_\_\_

COAL WAS ENCOUNTERED AT **475'** FEET **9** INCHES  
 \_\_\_\_\_ FEET \_\_\_\_\_ INCHES FEET \_\_\_\_\_ INCHES  
 \_\_\_\_\_ FEET \_\_\_\_\_ INCHES FEET \_\_\_\_\_ INCHES

Formation	Color	Hard or Soft	Top	Bottom	Oil, Gas or Water	Depth Found	Remarks
<b>Fgh. Coal</b>			<b>475'</b>				
<b>Big Injan</b>			<b>1000'</b>	<b>1977'</b>	<b>1st. Pay</b>	<b>1005'</b>	
<b>TOTAL DEPTH</b>				<b>1911</b>			
<b>DRILLING DEEPER COMMENCED Jan. 23, 1953</b>							
<b>DRILLING DEEPER COMPLETED Mar. 28, 1953</b>							
<b>Gault Sand</b>			<b>2245'</b>	<b>2270'</b>			
<b>Fifty Feet</b>			<b>2390'</b>	<b>2380'</b>			
<b>Thirty Feet</b>			<b>2597'</b>	<b>2406'</b>			
<b>Stray</b>			<b>2680'</b>	<b>2686'</b>			
<b>Gordon</b>			<b>2670'</b>	<b>2700'</b>			
<b>Fourth</b>			<b>2761'</b>	<b>2770'</b>			
<b>Fifth</b>			<b>2863'</b>	<b>2889'</b>	<b>Gas</b>	<b>2870-2882</b>	
<b>Bayard</b>			<b>2904'</b>	<b>2911'</b>	<b>Gas</b>	<b>2905'</b>	
<b>FINAL TOTAL DEPTH</b>				<b>2950'</b>			



DEC 6 1957

(Over)

Formation	Color	Hard or Soft	Top	Bottom	Oil, Gas or Water	Depth Found	Remarks

Date **May 21, 1937**

Date

, 19

**SOUTH FLEM NATURAL GAS COMPANY**

APPROVED

, Owner

By George W. Wilkerson  
 George J. Wilkerson, Land Agent