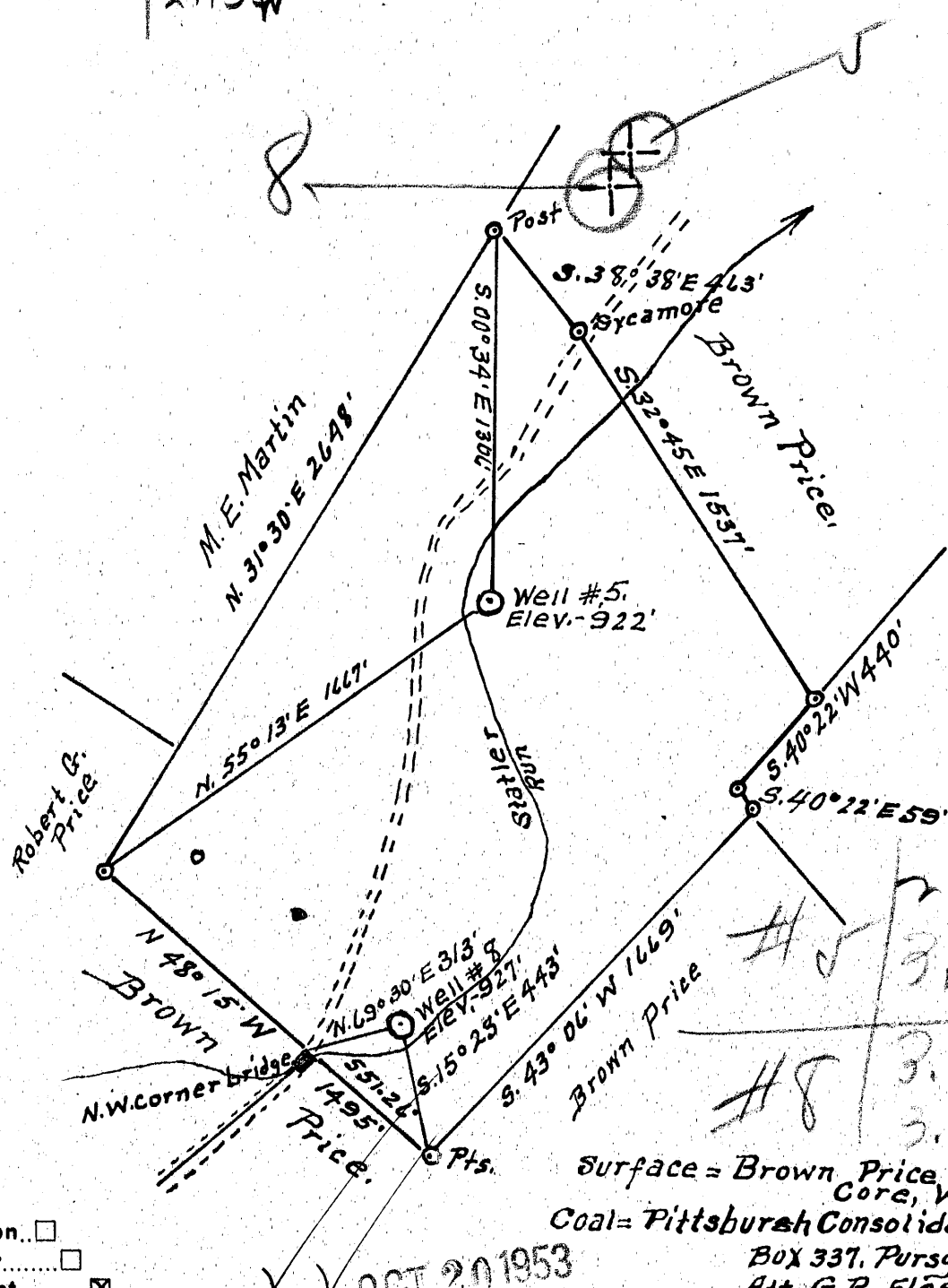


Latitude 39° 45'

Longitude 80° 05'

1
2
3

#5	3.085 2.841 W
#8	3.285 2.934 W



#5	2.87 W
#5	3.11 X
#8	3.0 W
#8	3.31 X

Surface = Brown Price
 Core, W.Va.
 Coal = Pittsburgh Consolidation Coal Co
 Box 337, Pursglove, W.Va.
 Att. G. B. Flégal

New Location...
 Drill Deeper.....
 Abandonment.....

OCT 20 1953

Company Dunn-Mar Oil & Gas Co.
 Address Waynesburg, Pa
 Farm Price heirs
 Tract 1 Acres 93.7 Lease No. _____
 Well (Farm) No: S 548 Serial No. _____
 Elevation (Spirit Level) #5 = 922' } No. 8 = 927'
 Quadrangle Blacksville
 County Monongalia District Clay
 Engineer A. L. Headley
 Engineer's Registration No. 2021
 File No. _____ Drawing No. _____
 Date 10-5-1953 Scale 1" = 600'

STATE OF WEST VIRGINIA
 DEPARTMENT OF MINES
 OIL AND GAS DIVISION
 CHARLESTON

WELL LOCATION MAP
 FILE NO. MON-574-A-#5
MON-575-A-#8

+ Denotes location of well on United States Topographic Maps, scale 1 to 62,500, latitude and longitude lines being represented by border lines as shown.

- Denotes one inch spaces on border line of original tracing.

PRICE HEIRS NOS 5 & 8 - DUNN-MAR OIL & GAS CO. - MON-574-A-5-1



STATE OF WEST VIRGINIA
DEPARTMENT OF MINES
OIL AND GAS DIVISION

WELL RECORD

619

Permit No. Dunn-Bar Oil & Gas Co. Oil or Gas Well _____ (KIND)

Company 433, Bridge St. Waynesburg, Pa.

Address Prizes Mrs.

Farm _____ Acres 93.7

Location (waters) Eight

Well No. Clay Monongalia

District _____ County 727

The surface of tract is owned in fee by _____

Address _____

Mineral rights are owned by _____

Address _____

Drilling commenced Oct. 12, 1923

Drilling completed _____

Date Shot _____ From _____ To _____

With _____

Open Flow _____ /10ths Water in _____ Inch

_____ /10ths Merc. in _____ Inch

Volume _____ Cu. Ft.

Rock Pressure _____ lbs. _____ hrs.

Oil _____ bbls., 1st 24 hrs.

Fresh water _____ feet _____ feet

Salt water _____ feet _____ feet

Casing and Tubing	Used in Drilling	Left in Well	Packers
Size			Kind of Packer
16			
13			
10		1114	Size of
8 1/4		1671	
6 3/8		1890	Depth set
5 3/16		2891	
3			Perf. top
2			Perf. bottom
Liners Used			Perf. top
			Perf. bottom

CASING CEMENTED _____ SIZE _____ No. Ft. _____ Date _____

_____ 122 60

389 WAS ENCOUNTERED AT 462 FEET 108 INCHES

_____ FEET _____ INCHES _____ FEET _____ INCHES

_____ FEET _____ INCHES _____ FEET _____ INCHES

Formation	Color	Hard or Soft	Top	Bottom	Oil, Gas or Water	Depth Found	Remarks
Waynesburg Coal			122	127			
Depot town "			372	377			
Pgh. Coal			462	471			
Dunkard			908	1050			
Salt ss			1230	1492			
Line			1620	1642			
"			1648	1724			
Injun			1724	1940			
50 Ft.			2338	2406			
30 Ft.			2432	2465			
Gordon			2645	2676			
Total				2891			



JAN 12 1954

Oil

WELL RECORD

61-30575

J. H. McDermott Oil

COMPANY

Record of Well No. 8 on Price Heirs Farm 234 Acres
Mooreville Field Caly District Monongalia County W. Va. State
 Rig Commenced 19 Completed 19
 Drilling Commenced May 3, 1923 Completed October 12, 1923
 Cost Per Foot Contractor Address
 Drillers Names

CONDUCTOR AND CASING USED IN DRILLING

Conductor 13 inch 10 inch 8 1/4 inch 6 5/8 inch 5 3/16 inch 4 inch 3 inch 2 inch
 31 480 1346 1671 1890 77'1" 3 inch 2 inch

CONDUCTOR AND CASING LEFT IN WELL

Conductor 13 inch 10 inch 8 3/4 inch 6 5/8 inch 5 3/16 inch 4 inch 3 inch 2 inch
 31 1114 1671 1890 77'1"

Formation	Top	Bottom	Thickness	Formation	Top	Bottom	Thickness
GRAVEL OR QUICK SAND FIRST WATER BLUFF SAND				FORMATION SQUAW BEREA GANTZ			
NATIVE COAL				FIFTY FOOT	2338	2406	
WBG. COAL	122	127		THIRTY FOOT	2432	2465	
MAPLE COAL	372	377		GORDON STRAY	2592	2615	
PGH. COAL	462	471		GORDON	2645	2676	
MURPHY SAND	595	715		FOURTH	2779	2791	
LITTLE DKRD.	908	955		FIFTH			
BIG DKRD.	978	1050		BAYARD	2849	2877	
GAS SAND	1126	1185		Gas show	2851		
FIRST SALT SAND	1230	1492		Gas & oil	2871		
SECOND SALT SAND				ELIZABETH			
LITTLE LIME	1620	1642					
PENCIL CAVE	1642	1648					
BIG LIME	1648	1724					
BIG INJUN	1724	1940					
Hole full water.	1972						
				TOTAL DEPTH	2891		

2849
2338
511

Gas Test Open
Minute Test

Oil Production 3 BBLs.

Well Tubed with Tubing Packer Set in Sand, Top of Packer, Perforation
 Well Tubed with 2861 Tubing 10 Ft. working bbl. 20' Anchor, Perforation at, 2876 Air Hole 2871

SHOT RECORD

Date	Amount	Size of Shell	Top	Bottom	Oil on Shot	Results
October 23/23	10qts. solid	3" x 10'	2870	2880	175'	N. G.
Nov. 5/23	25" "	4" x 7-5	2870	2877-6	175'	Fair

Hole filled with cement from 2338 to 2849 used 40 bags, cement 120 bags, sand (river s)
 REMARKS: Universal Portland cement let set 11 days, with 500 ft of water on same, set in good shape, but had air pocket in bottom 5ft. 77-1" liner in hole, 26'9 perfortaed no bell, top joint belled out, 8 1/4 casing unscrewed, left thread up.