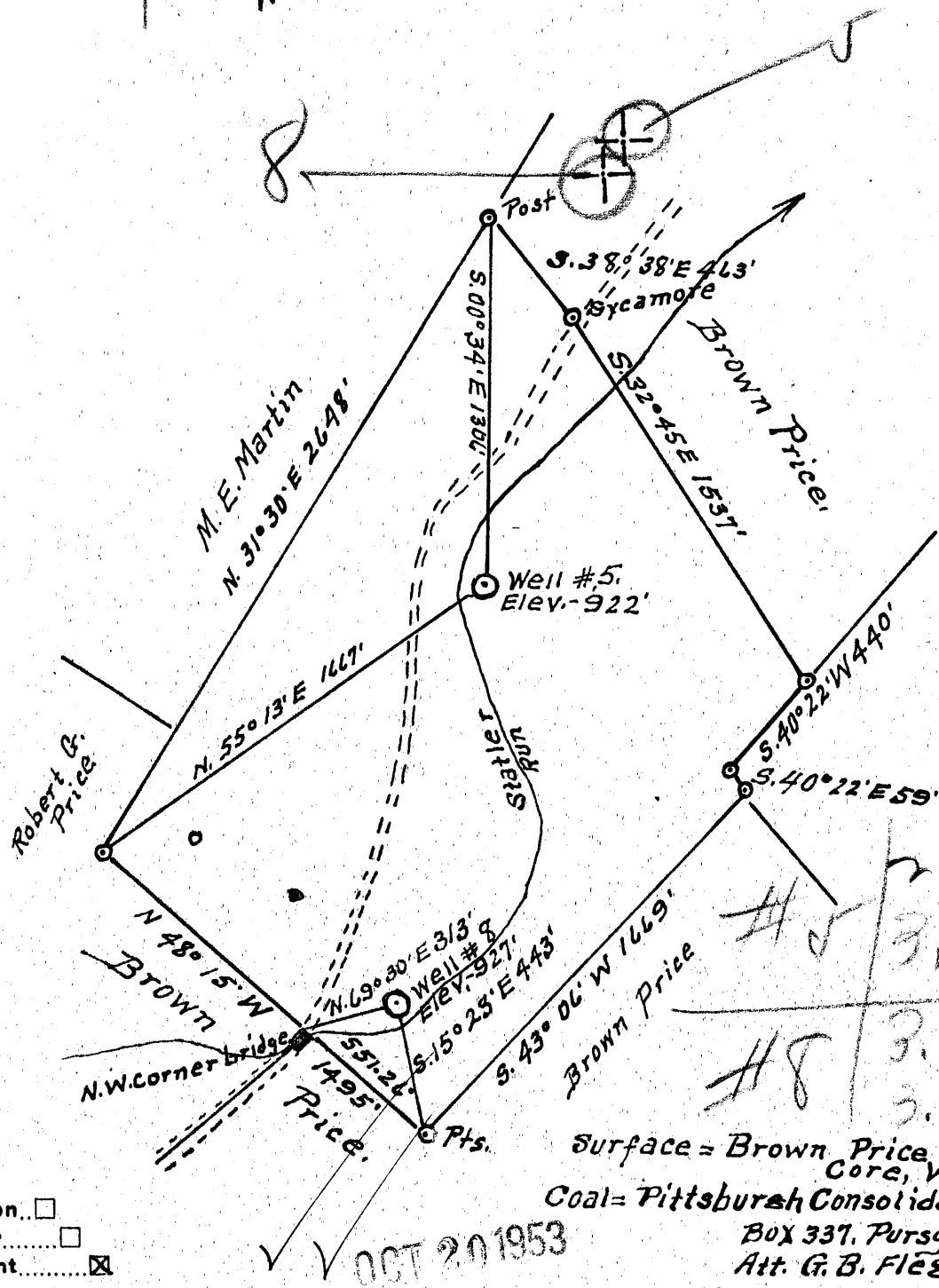
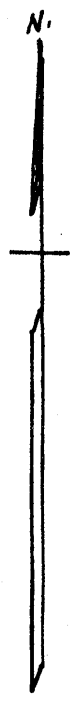


Latitude 39° 45'

Longitude 80° 05'

1
2
3

#5	3,085 2.84 W
#8	3,285 2.93 W



#5	2.87 W
#5	3.11 X
#8	3.0 W
#8	3.31 X

Surface = Brown Price
 Core, W.Va.
 Coal = Pittsburgh Consolidation Coal Co
 Box 337, Pursglove, W.Va.
 Att. G. B. Flégal

New Location...
 Drill Deeper.....
 Abandonment.....

OCT 20 1953

Company Dunn-Mar Oil & Gas Co.
 Address Waynesburg, Pa
 Farm Price heirs
 Tract 1 Acres 93.7 Lease No. _____
 Well (Farm) No: S 548 Serial No. _____
 Elevation (Spirit Level) #5 = 922' } No. 8 = 927'
 Quadrangle Blacksville
 County Monongalia District Clay
 Engineer A.L. Headley
 Engineer's Registration No. 2021
 File No. _____ Drawing No. _____
 Date 10-5-1953 Scale 1" = 600'

STATE OF WEST VIRGINIA
 DEPARTMENT OF MINES
 OIL AND GAS DIVISION
 CHARLESTON

WELL LOCATION MAP
 FILE NO. MON-574-A-#5
MON-575-A-#8

+ Denotes location of well on United States Topographic Maps, scale 1 to 62,500, latitude and longitude lines being represented by border lines as shown.

- Denotes one inch spaces on border line of original tracing.

PRICE HEIRS NOS 5 & 8 - DUNN-MAR OIL & GAS CO. - MON-574-A-5-1



STATE OF WEST VIRGINIA
DEPARTMENT OF MINES
OIL AND GAS DIVISION

WELL RECORD

6-20

Permit No. 574A Oil or Gas Well X (KIND)

Company Burn-Mer Oil & Gas Co.
Address 411 to Mr. F. B. Falker
Farm 433 Bridge St. Waynesburg, Pa.
Location (waters) Price Mrs
Well No. Five Elev. 927
District Clay County Monongalia
The surface of tract is owned in fee by _____
Mineral rights are owned by _____
Drilling commenced _____
Drilling completed Jan. 12, 1913
Date Shot From _____ To _____
With _____

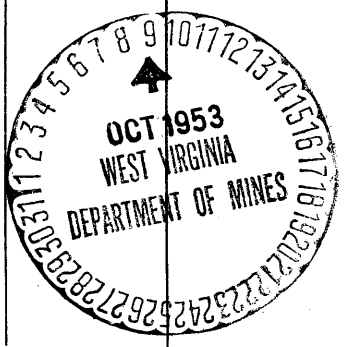
Casing and Tubing	Used in Drilling	Left in Well	Packers
Size			Kind of Packer
16			
13			
10			Size of
8 1/4			
6 1/2		1685	Depth set
5 3/16		1919	
3			Perf. top
2		2893	Perf. bottom
Liners Used			Perf. top
			Perf. bottom

Open Flow _____ /10ths Water in _____ Inch
_____ /10ths Merc. in _____ Inch
Volume _____ Cu. Ft.
Rock Pressure _____ lbs. _____ hrs.
Oil _____ bbls., 1st 24 hrs.
Fresh water _____ feet
Salt water _____ feet

CASING CEMENTED _____ SIZE _____ No. Ft. _____ Date _____

COAL WAS ENCOUNTERED AT _____ FEET _____ INCHES
_____ FEET _____ INCHES
_____ FEET _____ INCHES
_____ FEET _____ INCHES

Formation	Color	Hard or Soft	Top	Bottom	Oil, Gas or Water	Depth Found	Remarks
Waynesburg Coal			135	140			
Waynesburg "			378	383			
High. Coal			465	472			
Salt. Water			700				
Bunkard			805	940			
Salt. G.			1329	1498			
Lime			1672	1728			
Angun			1728	1940			
50 Ft.			2328	2352			
30 Ft.			2370	2465			
Gordon			2668	2683			
Fourth			2715	2733			
Fifth			2775	2778			
Hayard			2858	2885			
Total				2893			



JAN 2 1954
JAN 2 REC'D

(Over)

Oil

WELL RECORD 61-30574

The J.H. McDermott Oil

COMPANY

Record of Well No. 5 on Price Heirs Farm 97 Acres
Mooreville Field Clay District Monongalia County W. Va. State
 Rig Commenced Nov. 8th. 1917 19 17 Completed Mch. 19th. 1918
 Drilling Commenced Nov. 8th. 1917 19 17 Completed Mch. 19th. 1918
 Cost Per Foot Nov. 8th. 1917 Contractor J.H. McDermott Oil Co. Address Morgantown, W. Va.
 Drillers Names H.P. Hall, and O.V. Johnson,

CONDUCTOR AND CASING USED IN DRILLING

Conductor	13 inch	10 inch	8 1-4 inch	6 5-8 inch	5 3-16 inch	4 inch	3 inch	2 inch
	9ft.	31	482	1149	1685	1919	500	
CONDUCTOR AND CASING LEFT IN WELL								
Conductor	13 inch	10 inch	8 3-4 inch	6 5-8 inch	5 3-16 inch	4 inch	3 inch	2 inch

Formation	Top	Bottom	Thickness	Formation	Top	Bottom	Thickness
GRAVEL OR QUICK SAND	15	39	14	FORMATION			
FIRST WATER	20			SQUAW			
BLUFF SAND	90	130	40	BEREA			
Water hole full		125		GANTZ			
NATIVE COAL	135	168c	5	FIFTY FOOT	2328	2352	24
WBG. COAL	135	140	5	THIRTY FOOT	2370	2465	95
MAPEL COAL	378	383	5	GORDON STRAY	2595	2620	25
PGH. COAL	465	472	7	GORDON	2668	2683	15
MURPHY SAND	595	722	127	FOURTH	2715	2733	18
salt water	700			FIFTH	2775	2778	13
LITTLE DKRD.	805	840	35	BAYARD	2858	2885	27
BIG DKRD.	920	940	20	Gas 6/10 M. 2"	2860	2863	3
GAS SAND	1148	1193	45	" 9/10. " 2"	2868	2870	2
" 40/10W. 1"	1175	show oil		Oil	2875	2878	3
FIRST SALT SAND	1225	1270	45	ELIZABETH			
SECOND SALT SAND	1329	1498	169	TOTAL DEPTH	2893		
Hole full water		1370					
LITTLE LIME	1618	1672	57				
PENCIL CAVE	1672	1728	56				
BIG LIME	1728	1940	212				
BIG INJUN	1813						
Little gas	1871						
Salt water							

Gas Test Open
 Minute Test
 Oil Production 2 bbls. before shot.
 Well Tubed with Tubing Packer Set in Sand, Top of Packer, Perforation
 Well Tubed with Tubing Ft. working bbl. Anchor, Perforation at, Air Hole

SHOT RECORD

Date	Amount	Size of Shell	Top	Bottom	Oil on Shot	Results
May 28th. 1918	15qts.	3 1/2 X 7 1/2	2871-6	2879	150ft.	2 to 7 bbls.

REMARKS: 500ft. 4 1/2" Byers, 1917" liner set June 21st. 1918 257ft. top section, nothing on bottom, inside measure of bell 3 15/16, bottom section 243ft. inside of bell same. measure of inside of liner 4 1/2"