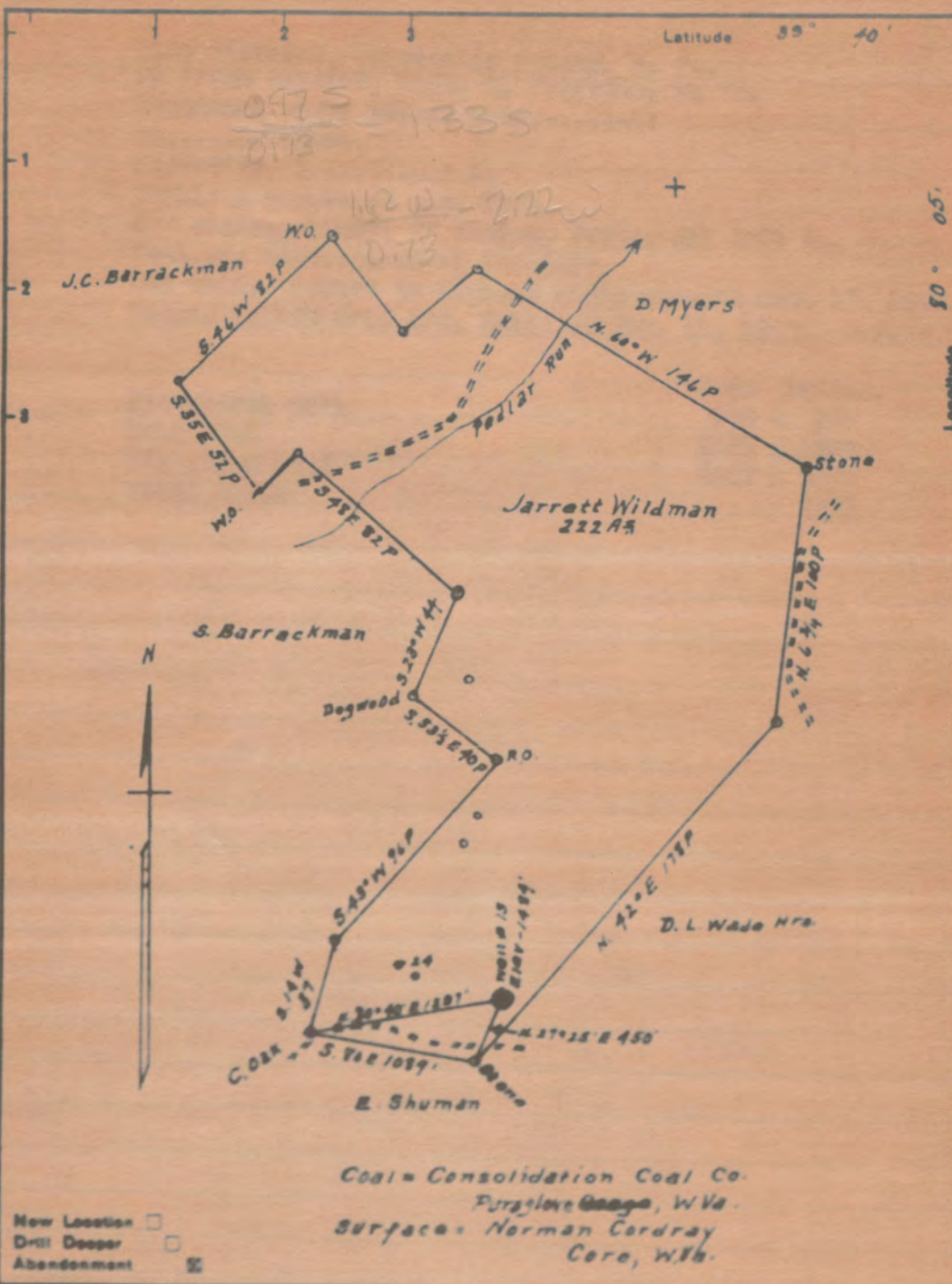


Latitude 35° 40'

0975 - 1335  
0173

112 W - 212 W  
0.73



Longitude 80° 05'

Coal - Consolidation Coal Co.  
Fayette County, W. Va.  
Surface - Norman Cordray  
Care, W. Va.

- New Location
- Drill Deeper
- Abandonment

Company Frank Chisler

STATE OF WEST VIRGINIA

JARRET WILLMAN NO. 13 WELL.

Clay District, Monongalia County, W. Va.  
By Frank Chisler, Route 2, Fairview, W. Va.  
Abandoned under permit Mon-.....-A?

On.....acres.

Elevation, .....' l.

Drilling completed Oct. 1924.

6 1/2" casing, 1926'; 2" tubing, 2025'; all left in.

Coal was encountered at 900-907'.

Oil well. Record to Dept. of Mines stamped Oct. 17, 1952.

Record to RCY from Mrs. Griffith Feb. 11, 1953. O.P.No.596.

	Top.	Bottom.
Pittsburgh Coal	900	- 907
Salt Sand	1685	- 1790
Big Injun Sand	2283	- 2330
Total depth		2333



STATE OF WEST VIRGINIA  
DEPARTMENT OF MINES  
OIL AND GAS DIVISION

596

Permit No. MON-561-A

WELL RECORD

Oil or Gas Well \_\_\_\_\_  
(KIND)

Company Frank Chisler  
Address Rte. #2, Fairview, W. Va.  
Farm Jarret Wildman Acres \_\_\_\_\_  
Location (waters) \_\_\_\_\_  
Well No. 13 Elev. \_\_\_\_\_  
District Clay County Monongalia  
The surface of tract is owned in fee by \_\_\_\_\_  
Address \_\_\_\_\_  
Mineral rights are owned by \_\_\_\_\_  
Address \_\_\_\_\_

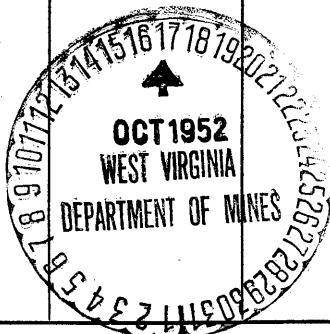
Casing and Tubing	Used in Drilling	Left in Well	Packers
Size			
16			Kind of Packer
13			
10			Size of
8 1/4			
6 1/2		1926	Depth set
5 3/16			
3			Perf. top
2		2025	Perf. bottom
Liners Used			Perf. top
			Perf. bottom

Drilling commenced \_\_\_\_\_  
Drilling completed Oct. 1924  
Date Shot From \_\_\_\_\_ To \_\_\_\_\_  
With \_\_\_\_\_  
Open Flow /10ths Water in \_\_\_\_\_ Inch  
/10ths Merc. in \_\_\_\_\_ Inch  
Volume \_\_\_\_\_ Cu. Ft.  
Rock Pressure \_\_\_\_\_ lbs. \_\_\_\_\_ hrs.  
Oil \_\_\_\_\_ bbls., 1st 24 hrs.  
Fresh water \_\_\_\_\_ feet \_\_\_\_\_ feet  
Salt water \_\_\_\_\_ feet \_\_\_\_\_ feet

CASING CEMENTED \_\_\_\_\_ SIZE \_\_\_\_\_ No. Ft. \_\_\_\_\_ Date \_\_\_\_\_

COAL WAS ENCOUNTERED AT 900 FEET 34 INCHES  
\_\_\_\_\_ FEET \_\_\_\_\_ INCHES FEET \_\_\_\_\_ INCHES  
\_\_\_\_\_ FEET \_\_\_\_\_ INCHES FEET \_\_\_\_\_ INCHES

Formation	Color	Hard or Soft	Top	Bottom	Oil, Gas or Water	Depth Found	Remarks
Pgn Coal			900	907			
Salt.			1685	1790			
Injuna sand.			2283	2230			
Total depth				2333.			



(Over)

FEB 11 1953