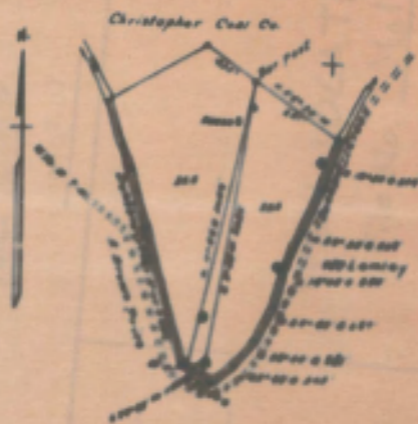


Latitude 39° 45'

39° 45'



Surface-Christopher Coal Co  
 Pungwa and  
 Coal-Ridgely Consolidation Coal Co  
 Pungwa, W. Va.

Well Location   
 Coal Range   
 Measurement

U.S. 21122	
Company	<i>Christopher Coal Co</i>
Address	<i>2000 West 1st St, Pungwa, W. Va.</i>
Name	<i>J. M. Press</i>
Tract (T.R.)	<i>Acres</i>
Map (Parcel No.)	<i>1</i>
Elevation (feet level)	<i>525'</i>
County	<i>Monroe</i>
Survey	<i>Monopolia Stone Clay</i>

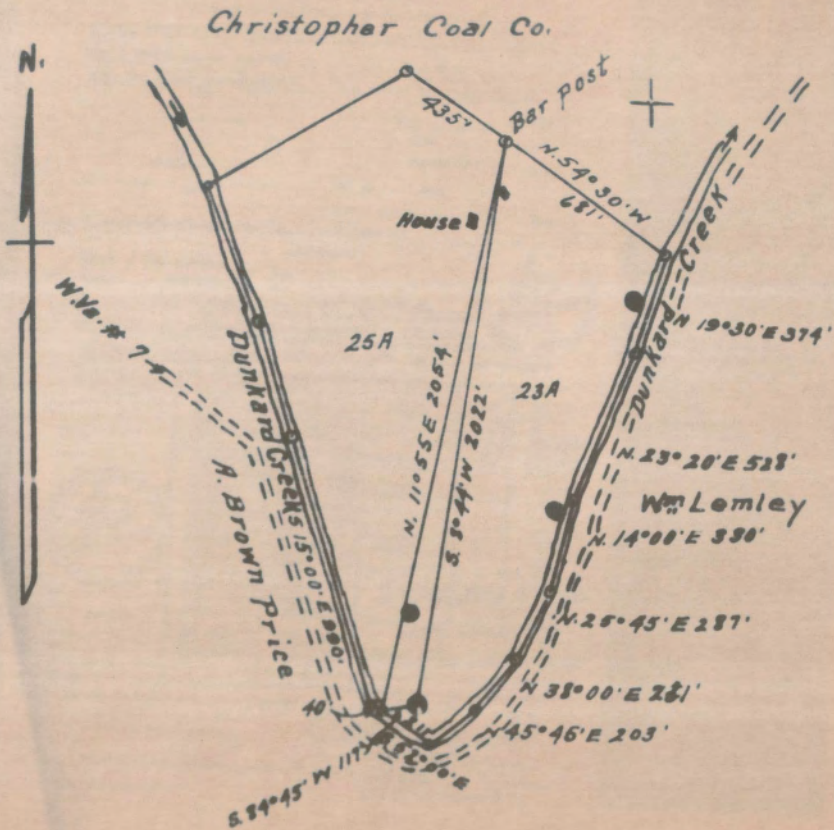
STATE OF WEST VIRGINIA  
 DEPARTMENT OF MINES  
 OIL, AND GAS SURVEY  
 CHARLESTON

**WELL LOCATION MAP**  
 FILE NO. *Mon. 21122*

© Shows location of well on United States  
 Topographic Map, scale 1 to 62,500, etc.

Latitude 39° 45'

Longitude 80° 05'



- New Location
- Drill Deeper
- Abandonment

Surface = Christopher Coal Co  
 Pursglove W. No.  
 Coal = Pittsburgh Consolidation Coal Co  
 Pursglove W. No.

Company H. B. WALKER

LATITUDE 39°45'00"

LONGITUDE 80°40'30"  
-S-  
+  
f

7'5 OGIS topo location

7.5' loc	<u>2.45S</u>	15' loc	<u>2.45S</u>
	<u>0.03W</u>	(calc.)	<u>2.25W</u>

Company \_\_\_\_\_

Farm \_\_\_\_\_

Quad Blacksilk (NC)

County Morongahela

District Clay

WELL LOCATION MAP

File No. 061-560 A



STATE OF WEST VIRGINIA  
DEPARTMENT OF MINES  
OIL AND GAS DIVISION

608

560-A

WELL RECORD

Permit No. \_\_\_\_\_ Oil or Gas Well \_\_\_\_\_ (KIND)

Company H.E. Walker  
Address Waynesburg, Pa.  
Farm J.W. Price Acres \_\_\_\_\_  
Location (waters) \_\_\_\_\_  
Well No. One Elev. \_\_\_\_\_  
District Clay County Monongalia  
The surface of tract is owned in fee by \_\_\_\_\_  
Address \_\_\_\_\_  
Mineral rights are owned by \_\_\_\_\_  
Address \_\_\_\_\_  
Drilling commenced \_\_\_\_\_  
Drilling completed Nov. 11, 1920  
Date Shot From \_\_\_\_\_ To \_\_\_\_\_  
With \_\_\_\_\_

Casing and Tubing	Used in Drilling	Left in Well	Packers
Size			
16			Kind of Packer
13			
10			Size of
8 1/4		1155	-655 unscrewed.
6 1/2		1679	Depth set
5 3/16		2604	
3			Perf. top
2		2897	Perf. bottom
Liners Used			Perf. top
			Perf. bottom

Open Flow \_\_\_\_\_ /10ths Water in \_\_\_\_\_ Inch  
\_\_\_\_\_ /10ths Merc. in \_\_\_\_\_ Inch  
Volume \_\_\_\_\_ Cu. Ft.  
Rock Pressure \_\_\_\_\_ lbs. \_\_\_\_\_ hrs.  
Oil \_\_\_\_\_ bbls., 1st 24 hrs.  
Fresh water \_\_\_\_\_ feet \_\_\_\_\_ feet  
Salt water \_\_\_\_\_ feet \_\_\_\_\_ feet

CASING CEMENTED \_\_\_\_\_ SIZE \_\_\_\_\_ No. Ft. \_\_\_\_\_ Date \_\_\_\_\_

COAL WAS ENCOUNTERED AT 388 FEET 72 INCHES  
475 FEET 108 INCHES FEET INCHES  
FEET INCHES FEET INCHES

Formation	Color	Hard or Soft	Top	Bottom	Oil, Gas or Water	Depth Found	Remarks
Mapletown Coal			388	394			
Pgh Coal			475	484			
Murphy Sand			625	770			
Lt. Dunkard			910	930			
Big "			1025	1060			
Gas and			1183	1217			
Salt Sands			1275	1510			
Big Lime			1675	1735			
Big Injun			1735	1925	Oil 1863		
Squaw			1985	2034	Gas 2017		
Gantz			2322	2410			
50 Ft.			2430	2455			
30 Ft.			2468	2493			
Gordon Stray			2597	2619			
Gordon			2631	2635			
4th			2754	2761			
5th			2780	2797			
Bayard			2868	2890	Oil 2877		
Total Depth				2891			



(Over)

OCT 1953



The J.H. McDermott Oil

COMPANY

Record of Well No. **1** on **John W. Price** Farm **48** Acres  
**Mooreville** Field **Clay** District **Monongalia** County **W. Va.** State  
 Rig Commenced **19** Completed **19**  
 Drilling Commenced **November 6th. 1919** Completed **March 11th. 1920**  
 Cost Per Foot Contractor Address  
 Drillers Names **J.C. Fleming and John Seymour**

CONDUCTOR AND CASING USED IN DRILLING

Conductor 13 inch 10 inch 8 1-4 inch 6 5-8 inch 5 3-16 inch 4 inch 3 inch 2 inch  
**16 490 1155 1679 2604 2897**

CONDUCTOR AND CASING LEFT IN WELL

Conductor 13 inch 10 inch 8 3-4 inch 6 5-8 inch 5 3-16 inch 4 inch 3 inch 2 inch  
**655 unscrewed 1679 2604 2897**

Formation	Top	Bottom	Thickness	Formation	Top	Bottom	Thickness
GRAVEL OR QUICK SAND				FORMATION			
FIRST WATER				SQUAW	1985	2034	49
BLUFF SAND				Gas 5/10W. 2"	2017		
NATIVE COAL				BEREA			
WBG. COAL				GANTZ	2322	2410	88
MAPEL COAL	388	396	6ft	Brake of 20ft:			
PGH. COAL	475	484	9"	FIFTY FOOT	2450	2455	25
MURPHY SAND	625	770	145ft	THIRTY FOOT	2468	2493	25
Show of oil,				GORDON STRAY	2597	2619	22
LITTLE DKRD.	910	930	20	GORDON	2631	2635	4
BIG DKRD.	1025	1060	35	FOURTH	2754	2761	7
GAS SAND	1183	1217	34	FIFTH	2780	2797	14
Salt water 1200				Sand	2806	2815	9
FIRST SALT SAND	1275	1285	10	"	2831	2846	15
SECOND SALT SAND	1300	1510	210	BAYARD	2868	2890	22
Water	1380			Oil & gas	2871	2877	
LITTLE LIME				ELIZABETH			
PENCIL CAVE	1675	1735	60				
BIG LIME							
BIG INJUN	1735	1925	190				
Little oil	1863						
				TOTAL DEPTH	2897	2891	depth now

2891 -2891-  
 2877  
 14

Gas Test Open

Minute Test

Oil Production 4 bbls.

Well Tubed with 2871

Well Tubed with 2871

Tubing Packer Set in

Tubing 8 Ft. working bbl. 18ft.

Sand, Top of Packer,

Anchor, Perforation at, 2877

Perforation

Air Hole 2870

SHOT RECORD

Date	Amount	Size of Shell	Top	Bottom	Oil on Shot	Results
March 22/20	10qts.	3/4 X 5ft.	2871	2876	200	No good,
April 13/20	40"	2-4" X 4' 1-4" X 7'	2869	2885	175	

Abandoned in 1922

REMARKS: 8 1/2 casing Pulled 15ft. off bottom, unscrewed, thread up,



