

STATE OF WEST VIRGINIA  
DEPARTMENT OF MINES  
OIL AND GAS DIVISION

WELL RECORD

Permit No. \_\_\_\_\_

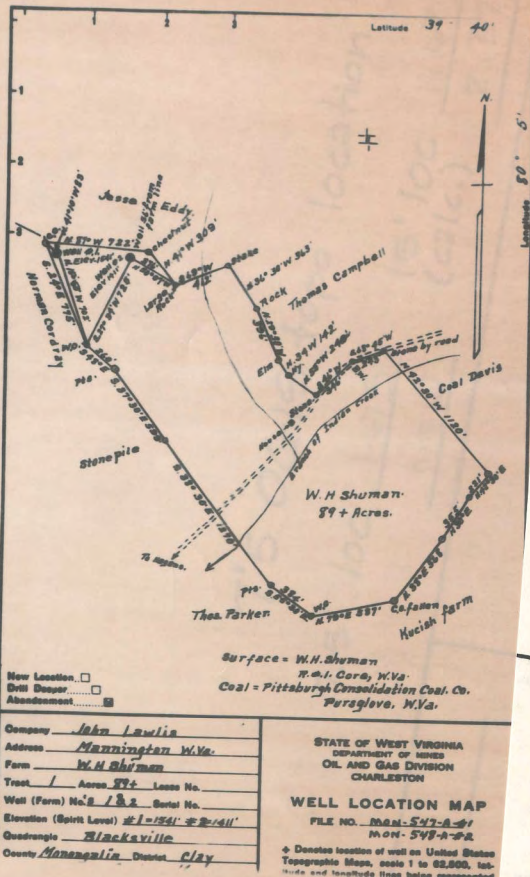
Oil or Gas Well \_\_\_\_\_

Company John Lewis  
Address Mannington, W. Va.  
Farm W. H. Shuman  
Location (waters) \_\_\_\_\_ Area \_\_\_\_\_  
Well No. One Sec. \_\_\_\_\_  
District Clay County Mason  
The surface of tract is owned in fee by \_\_\_\_\_  
Address \_\_\_\_\_  
Mineral rights are owned by \_\_\_\_\_  
Address \_\_\_\_\_  
Drilling commenced \_\_\_\_\_  
Drilling completed 1915  
Date shut \_\_\_\_\_  
From \_\_\_\_\_ To \_\_\_\_\_  
Wish \_\_\_\_\_  
Open Flow 1/10th Water in \_\_\_\_\_ Inch  
1/10th More in \_\_\_\_\_ Inch  
Volume \_\_\_\_\_ Inch  
Back Pressure \_\_\_\_\_ Co. Ft.  
No. \_\_\_\_\_  
Oil \_\_\_\_\_  
Fresh water \_\_\_\_\_ Mbs. Int 24 hrs.  
Salt water \_\_\_\_\_  
Salt water \_\_\_\_\_

Casing Cemented	Size	No. Ft.	Date

COAL WAS ENCOUNTERED AT 945 FEET 84 INCHES  
FEET INCHES FEET INCHES  
FEET INCHES FEET INCHES

Formation	Color	Kind or Sub	Top	Bottom	Oil, Gas or Water	Depth (Feet)	Remarks
Pgh. Coal			945	952			
Big Inghm			2264	2290			
Total Depth				2391	Oil & Gas	2372	



LATITUDE 39° 40' 00"

80° 10' 30"

75'

LONGITUDE

7'5 OGIS topo location

7.5' loc	<u>1.475</u>	15' loc	<u>1.475</u>
	<u>0.150</u>	(calc.)	<u>2.370</u>

Company \_\_\_\_\_

Farm \_\_\_\_\_

Quad Blacksville (BULEC)

County Monongahela

District Clay

WELL LOCATION MAP

File No. 061-547A



STATE OF WEST VIRGINIA  
DEPARTMENT OF MINES  
OIL AND GAS DIVISION

621

547-A

WELL RECORD

Permit No. \_\_\_\_\_

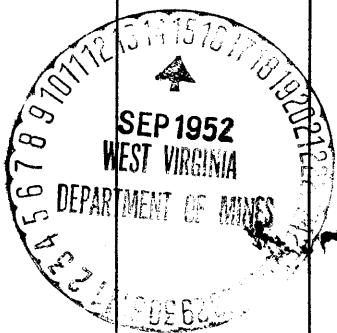
Oil or Gas Well \_\_\_\_\_ (KIND)

Company John Lawlis  
 Address Marrington, W. Va.  
 Farm W. H. Shuman Acres \_\_\_\_\_  
 Location (waters) \_\_\_\_\_  
 Well No. One Elev. \_\_\_\_\_  
 District Clay County Monogalia  
 The surface of tract is owned in fee by \_\_\_\_\_  
 Address \_\_\_\_\_  
 Mineral rights are owned by \_\_\_\_\_  
 Address \_\_\_\_\_  
 Drilling commenced \_\_\_\_\_  
 Drilling completed 1915  
 Date Shot \_\_\_\_\_ From \_\_\_\_\_ To \_\_\_\_\_  
 With \_\_\_\_\_  
 Open Flow /10ths Water in \_\_\_\_\_ Inch  
 /10ths Merc. in \_\_\_\_\_ Inch  
 Volume \_\_\_\_\_ Cu. Ft.  
 Rock Pressure \_\_\_\_\_ lbs. \_\_\_\_\_ hrs.  
 Oil \_\_\_\_\_ bbls., 1st 24 hrs.  
 Fresh water \_\_\_\_\_ feet \_\_\_\_\_ feet  
 Salt water \_\_\_\_\_ feet \_\_\_\_\_ feet

Casing and Tubing	Used in Drilling	Left in Well	Packers
Size			
16			Kind of Packer
13			
10			Size of
8 1/4			
6 5/8		1964	Depth set
5 3/16			
3			Perf. top
2			Perf. bottom
Liners Used			Perf. top
			Perf. bottom

CASING CEMENTED \_\_\_\_\_ SIZE \_\_\_\_\_ No. Ft. \_\_\_\_\_ Da \_\_\_\_\_  
 COAL WAS ENCOUNTERED AT 945 FEET 34 INCHES  
 \_\_\_\_\_ FEET \_\_\_\_\_ INCHES FEET \_\_\_\_\_ INCHES  
 \_\_\_\_\_ FEET \_\_\_\_\_ INCHES FEET \_\_\_\_\_ INCHES

Formation	Color	Hard or Soft	Top	Bottom	Oil, Gas or Water	Depth Found	Remarks
Pgh. Coal			945	952			
Big Injun			2264	2290	Oil & Gas		
Total Depth				2391	2372		



JAN 2 1954  
(Over) JAN 2 RECD