

LATITUDE 39°40'00"

88°20'00"

LONGITUDE

75'  
+

7'5 OGIS topo location

7.5' 10C	<u>1.76S</u>	15' 10C	<u>1.76S</u>
	<u>1.65W</u>	(calc.)	<u>1.65W</u>

#102 on Co. R. 2

Company \_\_\_\_\_

Farm \_\_\_\_\_

Quad Wadestown (March C)

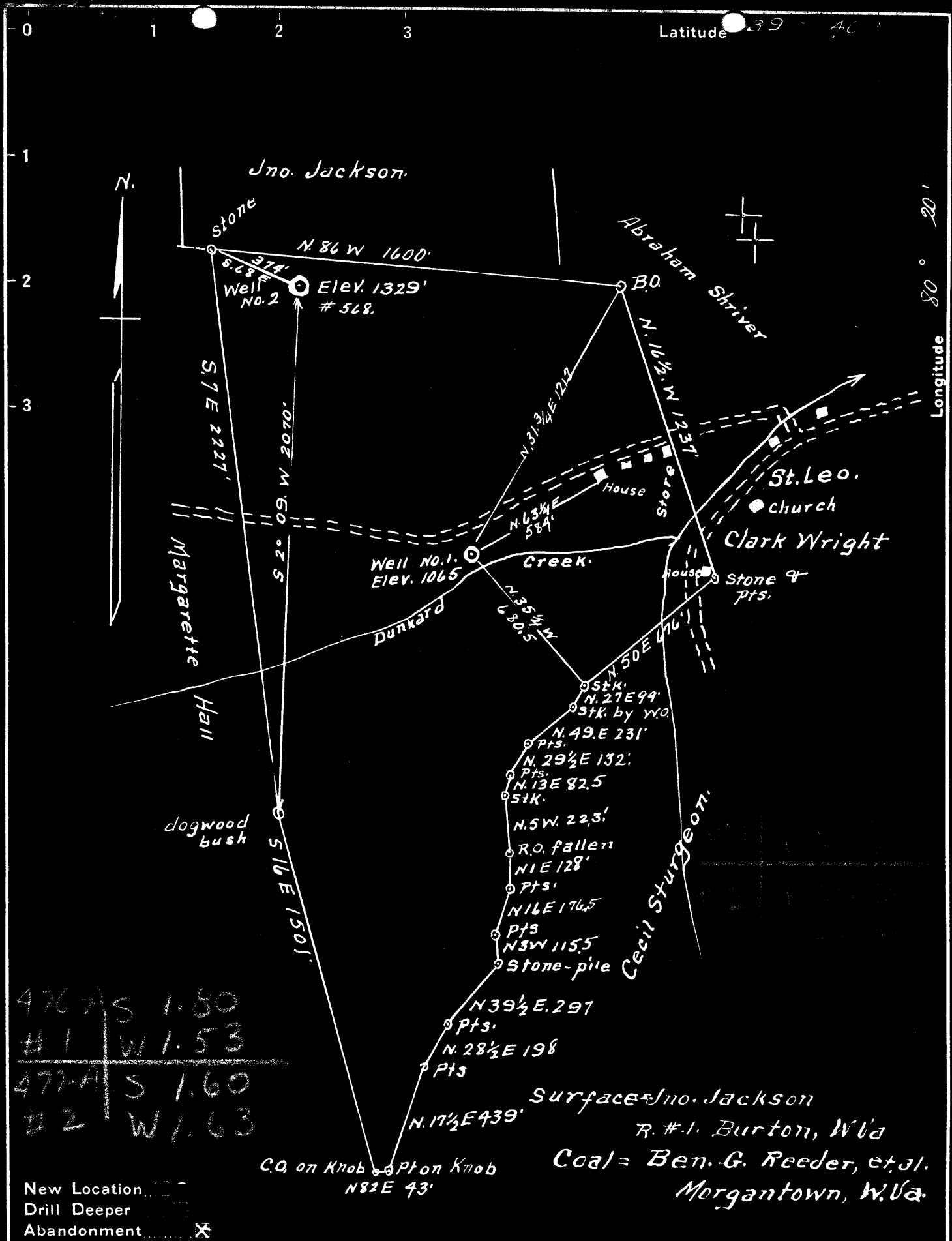
County Monongalia

District Battelle

WELL LOCATION MAP

File No. 061-70047

row 476 A



476-A-S 1.80  
 #1 W 1.53  
 477-A-S 1.60  
 #2 W 1.63

Surface - Jno. Jackson  
 R. #1. Burton, W. Va  
 Coal - Ben. G. Reeder, et al.  
 Morgantown, W. Va.

New Location   
 Drill Deeper   
 Abandonment

Company Dunn-Mar Oil & Gas Co  
 Address Waynesburg Pa.  
 Farm J.M. Hall  
 Tract 1 Acres 96.864 Lease No. \_\_\_\_\_  
 Well (Farm) No. 1.8.2. Serial No. 568  
 Elevation (Spirit Level) #. 1 = 1065'  
 #. 2 = 1329  
 Quadrangle Mannington  
 County Monongalia District Battelle  
 Engineer A.L. Headley  
 Engineer's Registration No. 2021  
 File No. \_\_\_\_\_ Drawing No. \_\_\_\_\_  
 Date 9-8-1950 Scale 1" = 500'

STATE OF WEST VIRGINIA  
 DEPARTMENT OF MINES  
 OIL AND GAS DIVISION  
 CHARLESTON

WELL LOCATION MAP  
 FILE NO. MON-476-A-#1  
MON-477-A-#2

+ Denotes location of well on United States Topographic Maps, scale 1 to 62,500, latitude and longitude lines being represented by border lines as shown.

- Denotes one inch spaces on border line of original tracing.

Battelle District, Monongalia County, W. Va.  
Authority, Jos. M. Craig, Chartiers Oil Co.  
Near St. Leo.  
Elevation, 1070' L.

no. 476A

	Top.	Bottom.
Pittsburgh Coal	916	
Dunkard (Mahoning) Sand	1410	- 1430
Gas Sand, hard	1600	- 1690
Salt Sand	1816	- 1935
Big Lime	2150	- 2228
Big Injun Sand (water, 2312')	2228	- 2415
50-Ft. Sand	2875	- 2925
Campbells Run Sand (oil, 3077')	3072	- 3107
Fourth Sand	3145	- 3155



536

STATE OF WEST VIRGINIA  
DEPARTMENT OF MINES  
OIL AND GAS DIVISION

WELL RECORD

Permit No. 476A

Oil or Gas Well (KIND)

Company Dunn-Mer Oil & Gas Co.  
 Address Waynesburg, Penna.  
 Farm J. M. Hall Acres 140  
 Location (waters) Miracle Run  
 Well No. 1 Elev. 1065  
 District Puttelle County Monongalia  
 The surface of tract is owned in fee by Jno. Jackson  
 Address R.D. #1-Burton, W. Va.  
 Mineral rights are owned by Union Gas & Oil Co.  
 Address Washington, Pa.  
 Drilling commenced January 10, 1932  
 Drilling completed April 18, 1932  
 Date Shod Sept. 5, 1919 From 3076' To 3086'  
 With 25 lbs. nitroglycerine  
 Open Flow /10ths Water in \_\_\_\_\_ Inch  
 /10ths Merc. in \_\_\_\_\_ Inch  
 Volume \_\_\_\_\_ Cu. Ft.  
 Rock Pressure \_\_\_\_\_ lbs. \_\_\_\_\_ hrs.  
 Oil 15 \_\_\_\_\_ bbls., 1st 24 hrs.  
 Fresh water 0 feet 0 feet  
 Salt water 0 feet 0 feet

Casing and Tubing	Used in Drilling	Left in Well	Packers
Size			Kind of Packer
16			
13			Size of
10			
8 1/2			Depth set <u>2184'</u>
6%	<u>2184'</u>	<u>2184'</u>	<u>2360'</u>
5 3/16	<u>2360'</u>	<u>2360'</u>	
3			Perf. top
2	<u>3185'</u>	<u>3185'</u>	Perf. bottom
Liners Used	<u>275-4</u>	<u>275-4</u>	Perf. top
			Perf. bottom

CASING CEMENTED \_\_\_\_\_ SIZE \_\_\_\_\_ No. Ft. \_\_\_\_\_ Date \_\_\_\_\_

COAL WAS ENCOUNTERED AT 1065 FEET \_\_\_\_\_ INCHES

\_\_\_\_\_ FEET \_\_\_\_\_ INCHES \_\_\_\_\_ FEET \_\_\_\_\_ INCHES

\_\_\_\_\_ FEET \_\_\_\_\_ INCHES \_\_\_\_\_ FEET \_\_\_\_\_ INCHES

Formation	Color	Hard or Soft	Top	Bottom	Oil, Gas or Water	Depth Found	Remarks
Pgh. Coal	Black	Soft	1065	1072			
Gas Sand	Grey	Hard	1600	1690			
Big Injun S	Grey	Hard	2228	2415			
Fifty Foot S	Grey	Hard	2875	2925			
Fourth Sand	Grey	Hard	3158	3180			
Total Depth	3191						

