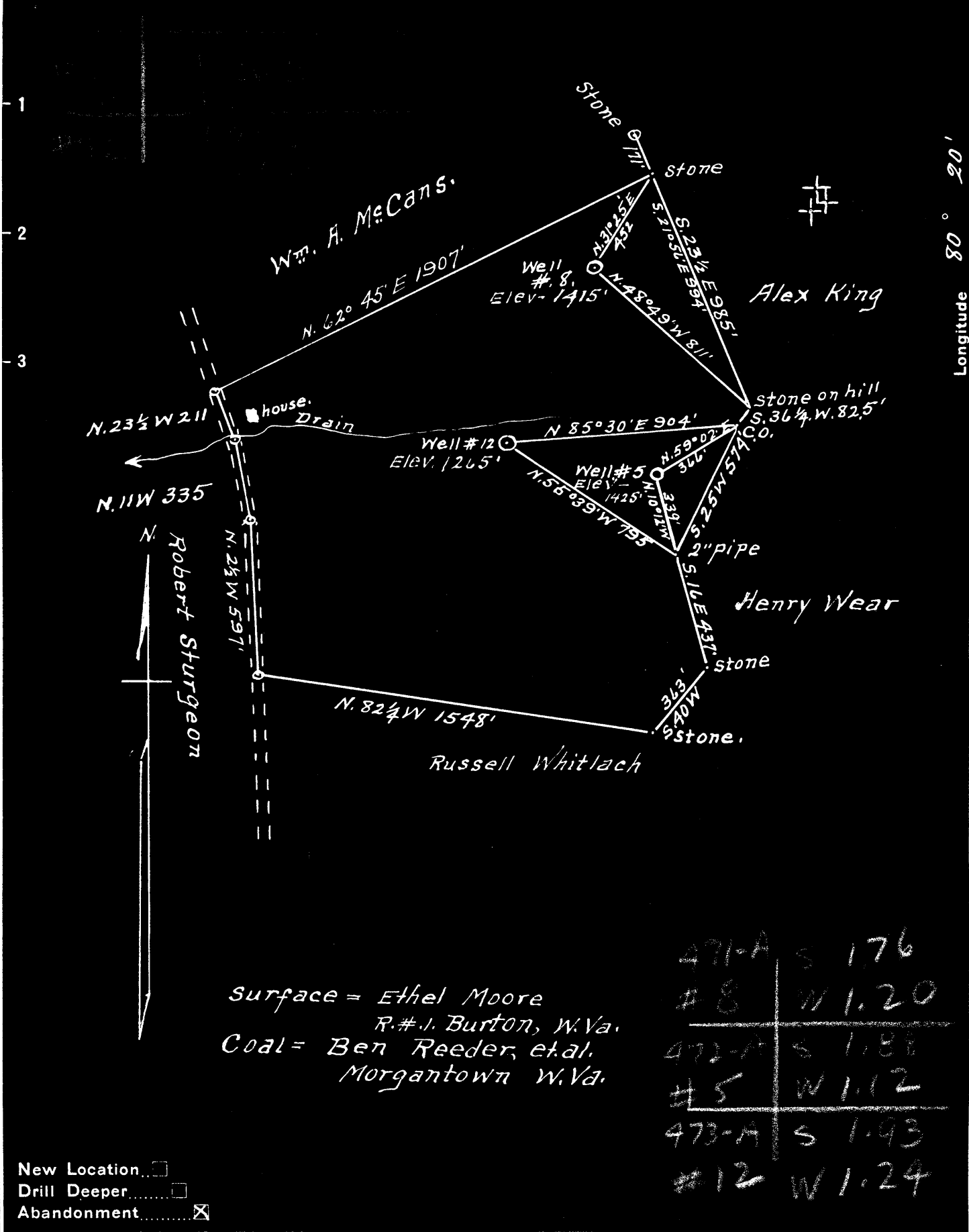


Latitude 39 40'



Surface = Ethel Moore  
 R. # 1. Burton, W. Va.  
 Coal = Ben Reeder, et al.  
 Morgantown W. Va.

471-A	S 176
# 8	W 1.20
472-A	S 1.85
# 5	W 1.12
473-A	S 1.93
# 12	W 1.24

New Location   
 Drill Deeper   
 Abandonment

Company Dunn-Mar Oil & Gas Co.  
 Address Waynesburg, Pa.  
 Farm William Kenney  
 Tract 1 Acres 70 1/2 Lease No. \_\_\_\_\_  
 Well (Farm) No.'s 5-8-4-12 Serial No. 585-588  
 Elevation (Spirit Level) # 5 = 1425' - # 8 = 1415'  
# 12 = 1265'  
 Quadrangle Mannington  
 County Monongalia District Battelle  
 Engineer A. L. Headley  
 Engineer's Registration No. 2021  
 File No. \_\_\_\_\_ Drawing No. \_\_\_\_\_  
 Date May 4 - 1950 Scale 1" = 500'

STATE OF WEST VIRGINIA  
 DEPARTMENT OF MINES  
 OIL AND GAS DIVISION  
 CHARLESTON

**WELL LOCAT N MAP**  
 MON-471-A-8  
 FILE NO. MON-472-A-5  
 MON-473-A-12

+ Denotes location of well on United States Topographic Maps, scale 1 to 62,500, latitude and longitude lines being represented by border lines as shown.

- Denotes one inch spaces on border line of original tracing.



STATE OF WEST VIRGINIA  
DEPARTMENT OF MINES  
OIL AND GAS DIVISION

527

149/3400  
288  
520  
402  
89

WELL RECORD

Permit No. WV-471-82

Oil or Gas Well \_\_\_\_\_  
(KIND)

Company Dunn-Marr Oil & Gas Company  
Address Waynesburg, Pa.  
Farm Wm. Kenney Acres 310  
Location (waters) Miracle Run  
Well No. 8 Elev. 1415  
District Battelle County Monongalia  
The surface of tract is owned in fee by Ethel Moore  
Address R.D.1, Burton, W. Va  
Mineral rights are owned by Union Gasoline & Oil Company  
Address Washington, Pa.  
Drilling commenced November 28, 1907  
Drilling completed February 28, 1908  
Date Shot None From \_\_\_\_\_ To \_\_\_\_\_  
With \_\_\_\_\_  
Open Flow \_\_\_\_\_ /10ths Water in \_\_\_\_\_ Inch  
\_\_\_\_\_ /10ths Merc. in \_\_\_\_\_ Inch  
Volume \_\_\_\_\_ Cu. Ft.  
Rock Pressure \_\_\_\_\_ lbs. \_\_\_\_\_ hrs.  
Oil 15 bbls., 1st 24 hrs.  
Fresh water \_\_\_\_\_ feet  
Salt water \_\_\_\_\_ feet

Casing and Tubing	Used in Drilling	Left in Well	Packers
Size			
16			Kind of Packer
13			
10			Size of
8 1/4	1653	1653	
6 5/8	2475	2475	Depth set
5 3/16	2670	2670	
3			Perf. top
2	3534	3534	Perf. bottom
Liners Used			Perf. top
			Perf. bottom

CASING CEMENTED \_\_\_\_\_ SIZE \_\_\_\_\_ No. Ft. \_\_\_\_\_ Date \_\_\_\_\_

COAL WAS ENCOUNTERED AT 910 FEET \_\_\_\_\_ INCHES  
1250 FEET \_\_\_\_\_ INCHES FEET \_\_\_\_\_ INCHES  
\_\_\_\_\_ FEET \_\_\_\_\_ INCHES FEET \_\_\_\_\_ INCHES

Formation	Color	Hard or Soft	Top	Bottom	Oil, Gas or Water	Depth Found	Remarks
Wbg. Coal	Black	Soft	910	915			
Pgh. Coal	Black	Soft	1250	1259			
Murphy Sand	Grey	Hard	1375	1405			
Gas Sand	Grey	Hard	1935	1995			
Salt Sand	White	Soft	2145	2265			
Big Injun	Grey	Hard	2535	2705			
4th. Sand	Grey	Hard	3504	3534			

8202122324252627282930  
JUL 1950  
WEST VIRGINIA  
DEPARTMENT OF MINES  
168796+82440