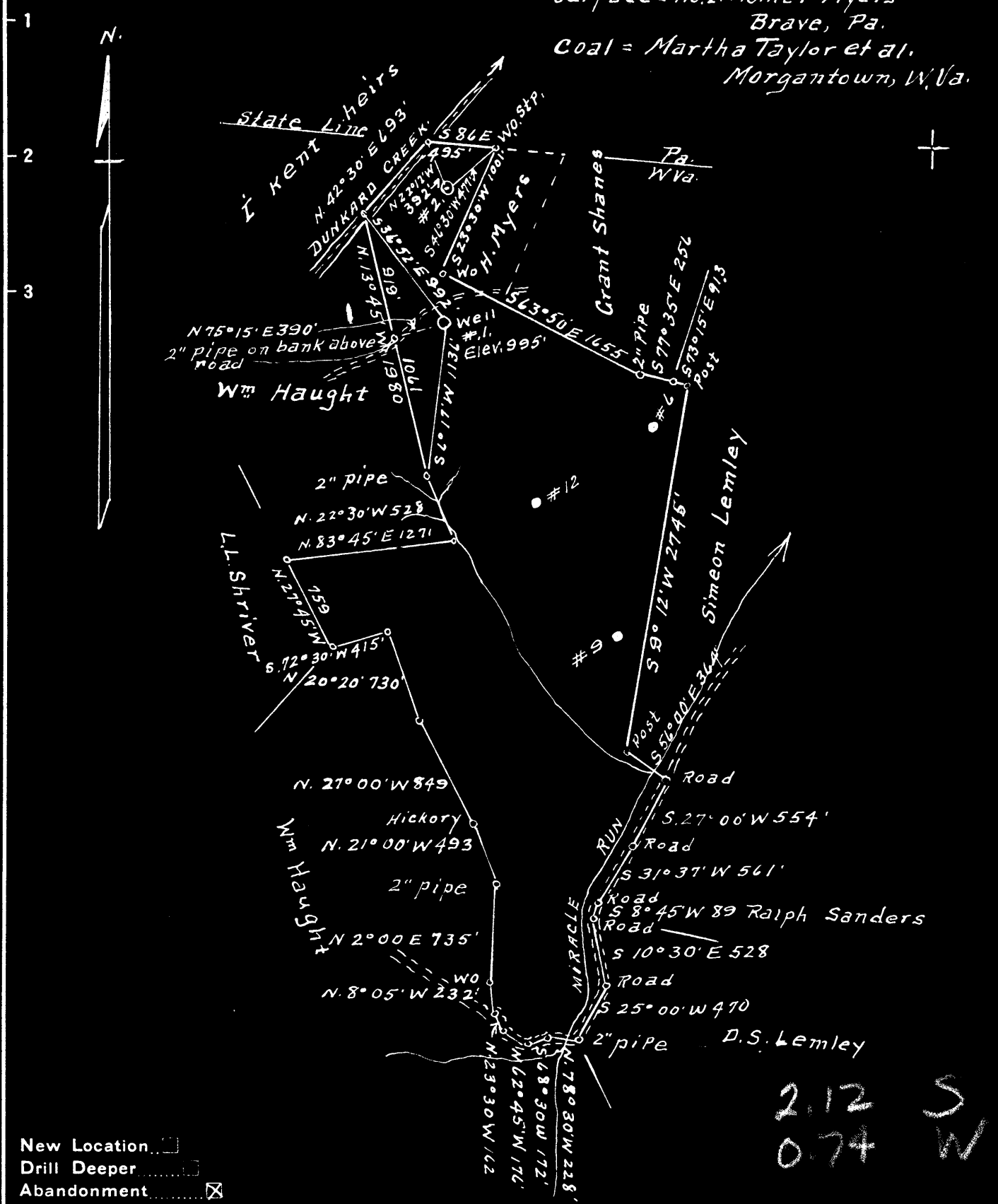


Latitude 39° 45'

Longitude 80° 15'

Surface = No. 1. Ralph Sanders  
Wadestown, W.Va.  
Surface = No. 2. Homer Myers  
Brave, Pa.  
Coal = Martha Taylor et al.  
Morgantown, W.Va.



New Location   
 Drill Deeper   
 Abandonment

Company A.M. Snider  
 Address Hundred, W.Va.  
 Farm E.J. Eddy  
 Tract 1 Acres 207+ Lease No. 26080  
 Well (Farm) No. 1, 2 Serial No.         
 Elevation (Spirit Level) #1 = 995'  
 #2 = 853'  
 Quadrangle Mannington  
 County Monongalia District Battelle  
 Engineer A.L. Headley  
 Engineer's Registration No. 2021  
 File No.        Drawing No.         
 Date 11-23-1948 Scale 1" = 1000'

STATE OF WEST VIRGINIA  
 DEPARTMENT OF MINES  
 OIL AND GAS DIVISION  
 CHARLESTON

**WELL LOCATION MAP**  
 FILE NO. MON-444-A-#2  
MON-445-A-#1

+ Denotes location of well on United States Topographic Maps, scale 1 to 62,500, latitude and longitude lines being represented by border lines as shown.

- Denotes one inch spaces on border line of original tracing.

LATITUDE 39°45' 00"

80° 15' 00"

LONGITUDE

+25'

7'5 OGIS topo location

7.5' loc	<u>2285</u>	15' loc	<u>2285</u>
	<u>0.660</u>	(calc.)	<u>0.660</u>

Company \_\_\_\_\_

Farm \_\_\_\_\_

Quad Wadestown (N. of N.E.)

County Monongahela

District Battelle

WELL LOCATION MAP

File No. 061-445A



STATE OF WEST VIRGINIA  
DEPARTMENT OF MINES  
OIL AND GAS DIVISION

489

WELL RECORD

Permit No. 445-A

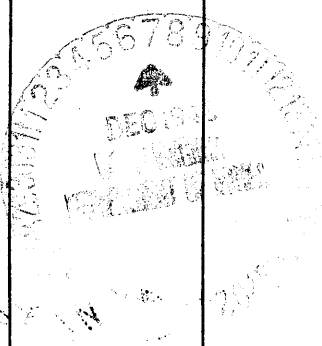
Oil or Gas Well X (KIND)

Company A. M. Snider  
 Address % Fred Finch- Salem, W. Va.  
 Farm E. J. Eddy Acres 207  
 Location (waters) \_\_\_\_\_  
 Well No. 1 Elev. 995  
 District Battelle County Monongalia  
 The surface of tract is owned in fee by Ralph Sanders- Wadestown, W. Va. Homer Myers-Bravo, Pa.  
 Mineral rights are owned by Martha Taylor Morgantown Address W. Va.  
 Drilling commenced No Record  
 Drilling completed July 17, 1900  
 Date Shot \_\_\_\_\_ From \_\_\_\_\_ To \_\_\_\_\_  
 With \_\_\_\_\_  
 Open Flow \_\_\_\_\_ /10ths Water in \_\_\_\_\_ Inch  
 \_\_\_\_\_ /10ths Merc. in \_\_\_\_\_ Inch  
 Volume \_\_\_\_\_ Cu. Ft.  
 Rock Pressure \_\_\_\_\_ lbs. \_\_\_\_\_ hrs.  
 Oil \_\_\_\_\_ bbls., 1st 24 hrs.  
 Fresh water \_\_\_\_\_ feet \_\_\_\_\_ feet  
 Salt water \_\_\_\_\_ feet \_\_\_\_\_ feet

Casing and Tubing	Used in Drilling	Left in Well	Packers
Size			
16			Kind of Packer
13	90	Pulled	
10	1395	Pulled	Size of
8 1/4	1795	Pulled	
6 3/4	1950	1950	Depth set
5 3/16	2365	2365	
3			Perf. top
2			Perf. bottom
Liners Used			Perf. top
4 1/2" x 4"	304	304	Perf. bottom

CASING CEMENTED \_\_\_\_\_ SIZE \_\_\_\_\_ No. Ft. \_\_\_\_\_ Date \_\_\_\_\_  
 COAL WAS ENCOUNTERED AT 960 FEET ? INCHES  
 \_\_\_\_\_ FEET \_\_\_\_\_ INCHES FEET \_\_\_\_\_ INCHES  
 \_\_\_\_\_ FEET \_\_\_\_\_ INCHES FEET \_\_\_\_\_ INCHES

Formation	Color	Hard or Soft	Top	Bottom	Oil, Gas or Water	Depth Found	Remarks
Pittsburgh Coal			960				
Big Injun			2215	2415			
Fifty Foot			2870	2920			
Stray Sand			3145	3175			
Gordon Sand			3205				
1st Pay			3222				
2nd Pay			3227				
Total Depth				3235			
		TORPEDO RECORD					
		1901	26qts.				
		1908	50qts.				



~~NO. 1~~ WELL NO. 1 WELL.  
R

445A

Battelle District, Monongalia County, W. Va.  
By A. H. Snider, Fred Finch, Sales, W. Va.  
Abandoned under permit Non-.....-47  
On 207 acres.  
Elevation, 995' L.

Surface owned by Ralph Sanders, Wehstock, W. Va., and Honor Myers,  
Ipsco, Pa., and minerals by Martha Taylor, Morgantown, W. Va.  
Drilling completed July 17, 1900.

1 1/2" casing, 90' (pulled); 2" casing, 1995' (pulled); 3" casing, 1795' (pulled);  
6" casing, 1950'; 8" casing, 2965'; 8 1/2" liner, 300'.

Coal was encountered at 960'. Shot in 1901, with 26 qts. & 1903 with 30 qts.  
Oil well. Record to Dept. of Mines stamped Dec. 7, 1943.

Record to 207 from Mrs. Griffith April 13, 1949. Old File No. 409.

	Top.	Bottom.
Pittsburgh Coal	960	...
Big Injan Sand	2215	2415
Fifty-foot Sand	2870	2920
Stony Sand	3145	3175
Carbon Sand (1st pay, 3222'; 2nd pay, 3227')	3205	....
Total depth		3235