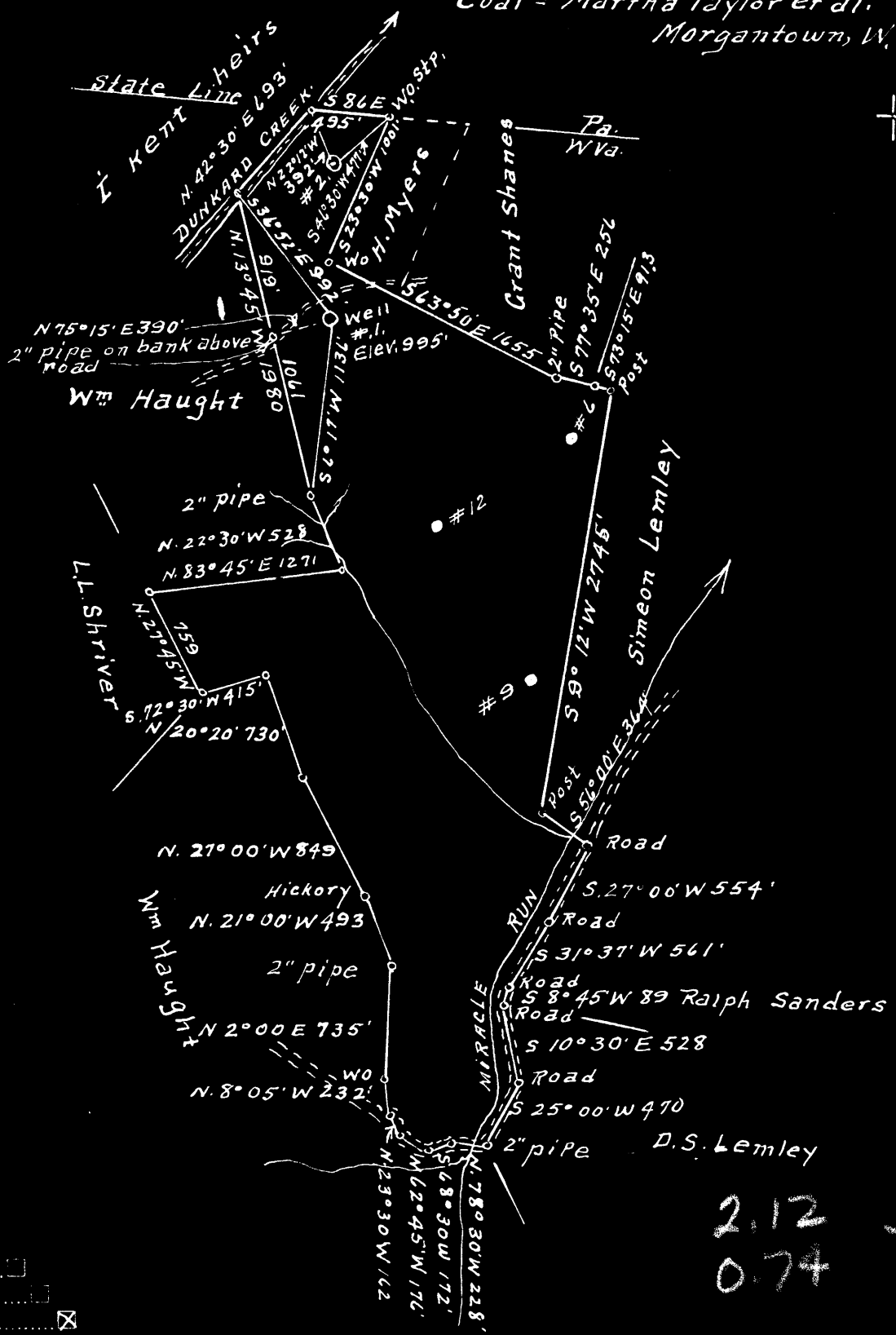


Latitude 39° 45'

Longitude 80° 15'

Surface = No. 1. Ralph Sanders  
Wadestown, W.Va.  
Surface = No. 2. Homer Myers  
Brave, Pa.  
Coal = Martha Taylor et al.  
Morgantown, W.Va.

N.



2.12 S  
0.74 W

New Location   
Drill Deeper   
Abandonment

Company A.M. Snider  
Address Hundred, W.Va.  
Farm E.J. Eddy  
Tract 1 Acres 207+ Lease No. 26080  
Well (Farm) No. 1 & 2 Serial No.             
Elevation (Spirit Level) #1 = 995'  
#2 = 893'  
Quadrangle Mannington  
County Monongalia District Battelle  
Engineer A.L. Headley  
Engineer's Registration No. 2021  
File No.            Drawing No.             
Date 11-23-1948 Scale 1" = 1000

STATE OF WEST VIRGINIA  
DEPARTMENT OF MINES  
OIL AND GAS DIVISION  
CHARLESTON

WELL LOCATION MAP  
FILE NO. MON-444-A-#2  
MON-445-A-#1

+ Denotes location of well on United States  
Topographic Maps, scale 1 to 62,500, lat-  
itude and longitude lines being represented  
by border lines as shown.  
- Denotes one inch spaces on border line  
of original tracing.

LATITUDE 39°45'00"

88°15'00"

LONGITUDE

75'  
+

7.5 OGIS topo location

7.5' loc	<u>2015</u>	15' loc	<u>2015</u>
	<u>0.169W</u>	(calc.)	<u>0.169W</u>

Company \_\_\_\_\_

Farm \_\_\_\_\_

Quad Wadestown (Mingler NE)

County Monongahela

District Battelle

WELL LOCATION MAP

File No. OGI-444A



STATE OF WEST VIRGINIA  
DEPARTMENT OF MINES  
OIL AND GAS DIVISION

444

WELL RECORD

Permit No. 444-A Oil or Gas Well X (KIND)

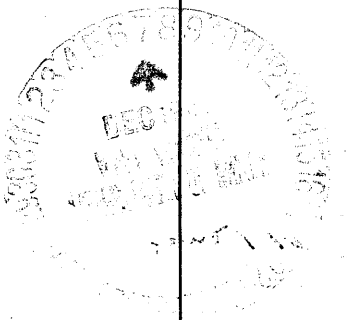
Company A. M. Snider  
Address 1/2 Fred Finch - Salem, W. Va.  
Farm E. J. Eddy Acres 207  
Location (waters) Miracle Run  
Well No. 2 Elev. 853  
District Battelle County Monongalia  
The surface of tract is owned in fee by Ralph Sanders  
Wadestown - Homer Myers - Brave, Pa.  
Mineral rights are owned by Martha Taylor  
Morgantown Address W. Va.  
Drilling commenced No Record  
Drilling completed Sept. 8, 1900  
Date Shot From To  
With

Casing and Tubing	Used in Drilling	Left in Well	Packers
Size			
16			Kind of Packer
13			
10	1117	1117	Size of
8 1/4	1662	Pulled	
6 5/8	1818	1818	Depth set
5 3/16	2236	2236	
3			Perf. top
2			Perf. bottom
Liners Used			Perf. top
4 1/2 x 4"	286	286	Perf. bottom

Open Flow /10ths Water in \_\_\_\_\_ Inch  
/10ths Merc. in \_\_\_\_\_ Inch  
Volume \_\_\_\_\_ Cu. Ft.  
Rock Pressure \_\_\_\_\_ lbs. \_\_\_\_\_ hrs.  
Oil \_\_\_\_\_ bbls., 1st 24 hrs.  
Fresh water \_\_\_\_\_ feet \_\_\_\_\_ feet  
Salt water \_\_\_\_\_ feet \_\_\_\_\_ feet

CASING CEMENTED \_\_\_\_\_ SIZE \_\_\_\_\_ No. Ft. \_\_\_\_\_ Date \_\_\_\_\_  
COAL WAS ENCOUNTERED AT 818 FEET ? INCHES  
\_\_\_\_\_ FEET \_\_\_\_\_ INCHES FEET \_\_\_\_\_ INCHES  
\_\_\_\_\_ FEET \_\_\_\_\_ INCHES FEET \_\_\_\_\_ INCHES

Formation	Color	Hard or Soft	Top	Bottom	Oil, Gas or Water	Depth Found	Remarks
Pittsburgh Coal			818				
Big Injun			2079	2360			
Fifty Foot			2756	2836			
C. Run Sand			3043	3065			
Gordon Sand			3093				
1st Pay			3098				
2nd Pay			3104				
Total Depth				3112			
		TORPEDO RECORD					
		1901	20Qts.				
		1926	20Qts				
			40 Qts - Dumped.				



~~W. H. HAY NO. 2 1881.~~  
R. J. EDDY

444A

Battle District, Monongalia County, W. Va.  
By A. H. Snider, Fred Finch, Sales, W. Va.  
Abandoned under permit No. ....-1?  
On 207 acres, on Miracle Run.  
Elevation, 855' L.

Surface owned by Ralph Sanders, Sandston, W. Va., and Homer Myers,  
Bravo, Pa., and minerals by Martha Taylor, Morgantown, W. Va.  
Drilling completed Sept. 8, 1900.

10" casing, 1117'; 8", 1662' (pulled); 6", 1818'; 5", 2236';  
4 x 4" liner, 236'.

Coal was encountered at 810'.

Oil well. Record to Dept. of Mines stamped Dec. 7, 1908.  
Record to DEP from Mrs. Griffith April 18, 1949. Old File No. 490.  
Shot in 1901 with 20 qts.; 1906, with 30 qts.; 40 qts. dumped.

	Top.	Bottom.
Pittsburgh Coal	818	- ...
Big Injun Sand	2072	- 2360
Fifty-foot Sand	2756	- 2876
Campbell Run Sand	3043	- 3065
Gordon Sand (1st pay, 3098'; 2nd pay, 3104')	3093	- ....
Total depth		3112