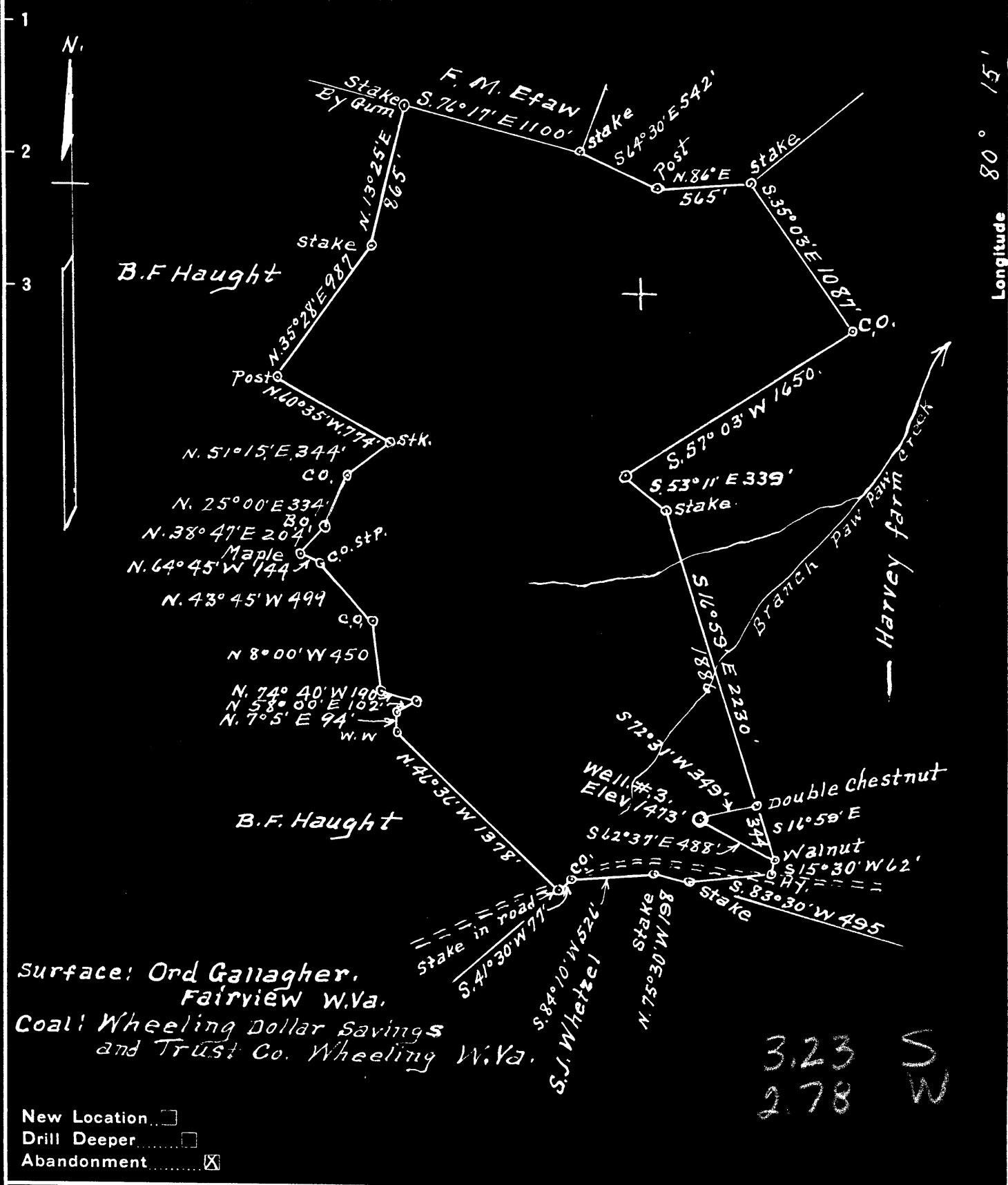


Latitude 39° 40'

Longitude 80° 15'



Surface: Ord Gallagher,  
Fairview W.Va.  
Coal: Wheeling Dollar Savings  
and Trust Co. Wheeling W.Va.

3.23 S  
2.78 W

New Location   
 Drill Deeper   
 Abandonment

Company A. M. Snider  
 Address Hundred, W.Va.  
 Farm W.L. Gallagher  
 Tract 1 Acres 222+ Lease No. 14673  
 Well (Farm) No. 3 Serial No. \_\_\_\_\_  
 Elevation (Spirit Level) 1473'  
 Quadrangle Mannington  
 County Monongalia District Battelle  
 Engineer A.L. Headley  
 Engineer's Registration No. \_\_\_\_\_  
 File No. \_\_\_\_\_ Drawing No. \_\_\_\_\_  
 Date 10-14-1948 Scale 1" = 800'

STATE OF WEST VIRGINIA  
 DEPARTMENT OF MINES  
 OIL AND GAS DIVISION  
 CHARLESTON

**WELL LOCATION MAP**  
 FILE NO. MON-436-A

+ Denotes location of well on United States Topographic Maps, scale 1 to 62,500, latitude and longitude lines being represented by border lines as shown.

- Denotes one inch spaces on border line of original tracing.



Battelle District, Monongalia County, W. Va.

By A. H. Gaider, Bayrad, W. Va.

Abandoned under permit No. ....

On 222 acres, on branch of Peopow Creek.

Elevation, 1873' L.

Surface owned by Ord Gallagher, Fairview, W. Va., and coal by Wheeling

Boiler Casings & Trust Co., Wheeling, W. Va.

Drilling completed Nov. 14, 1897 (to 3410'). Deepened Sept. 1904 to 3420'.

Shot in 1909, with 30 qts., at 3371'; in 1915, with 10 qts., at 3407';

in 1915, with 60 qts., at 3372'; in 1922, with 40 qts., at 3375';

in 1943, with 15 qts., at 3406'; in 1943, with 30 qts., at 3368'.

10" casing, 372'; 8 1/2", 1687'; 6 1/2", 2233'; 5 1/2", 2998' 8".

Coal was encountered at 1055 and 1155'.

Oil well. Record to Dept. of Mines stopped Oct. 27, 1948 and Jan. 17, 1949.

Record to RCF from Mrs. Griffith Feb. 3, 1949. GLE file no. 473.

	Top.	Bottom.
Madison (Soudley) Coal	1055	....
Pittsburgh Coal	1155	....
Hickory Sand	1670	1750
Salt Sand	2000	2095
Big Linc	2375	2455
Big Injun Sand	2455	2603
30-Foot Sand	2915	2950
Gantz Sand	3015	3045
50-Foot Sand	3055	3110
Gordon Sand (let pay, 3371')	3355	3391
Total depth		3394
DEEPENED SEPT. 1904:		
Fourth Sand (oil in 4th Sand, 3410')	....	....
Total depth		3420



473

STATE OF WEST VIRGINIA  
DEPARTMENT OF MINES  
OIL AND GAS DIVISION

WELL RECORD

Permit No. 436-A

Oil or Gas Well \_\_\_\_\_

(KIND)

Company A. M. Snider  
 Address Hundred, West Virginia  
 Farm W. L. Gallagher Acres 222  
 Location (waters) Branch Paw Paw Creek  
 Well No. 3 Elev. 1473  
 District Battelle County Monongalia  
 The surface of tract is owned in fee by Ord Gallagher  
Fairview Address W.Va.  
 Mineral rights are owned by Coal-Wheeling Dollar  
Savings & Trust Co Address Wheeling, W.Va.  
 Drilling commenced No Record  
 Drilling completed 11-14-97  
 Date Shot See Below From \_\_\_\_\_ To \_\_\_\_\_  
 With \_\_\_\_\_

Casing and Tubing	Used in Drilling	Left in Well	Packers
Size			Kind of Packer
16			
13			
10	372	372	Size of
8 1/4	1687	1687	
6%	2233	2233	Depth set
5 3/16	2598'8"	2598'8"	
3			Perf. top
2			Perf. bottom
Liners Used			Perf. top
			Perf. bottom

Open Flow \_\_\_\_\_ /10ths Water in \_\_\_\_\_ Inch  
 \_\_\_\_\_ /10ths Merc. in \_\_\_\_\_ Inch  
 Volume \_\_\_\_\_ Cu. Ft.  
 Rock Pressure \_\_\_\_\_ lbs. \_\_\_\_\_ hrs.  
 Oil \_\_\_\_\_ bbls., 1st 24 hrs.  
 Fresh water \_\_\_\_\_ feet \_\_\_\_\_ feet  
 Salt water \_\_\_\_\_ feet \_\_\_\_\_ feet

CASING CEMENTED \_\_\_\_\_ SIZE \_\_\_\_\_ No. Ft. \_\_\_\_\_ Date \_\_\_\_\_  
 COAL WAS ENCOUNTERED AT 1055 FEET ? INCHES  
1155 FEET ? INCHES FEET INCHES  
 FEET INCHES FEET INCHES

Formation	Color	Hard or Soft	Top	Bottom	Oil, Gas or Water	Depth Found	Remarks
Mapletown Coal			1055				
Pittsburgh Coal			1155				
Dunkard Sand			1670	1750			
Salt Sand			2030	2095			
Big Lime			2375	2455			
Big Injun			2455	2603			
30 Foot Sand			2915	2950			
Gants Sand			3015	3045			
50 Foot Sand			3055	3110			
Gordon Sand			3355	3391			
Total Depth				3394	1st say	3371	
Oil in 4th Sand				3410	Sept. 1904		Drilled Deeper
Total Depth				3420			
		TORPEDO RECORD					
		1909	30 qts.	3371			
		1915	10	3407			
		1915	60	3372			
		1922	40	3375			
		1943	15	3406			
		1943	30	3368			

