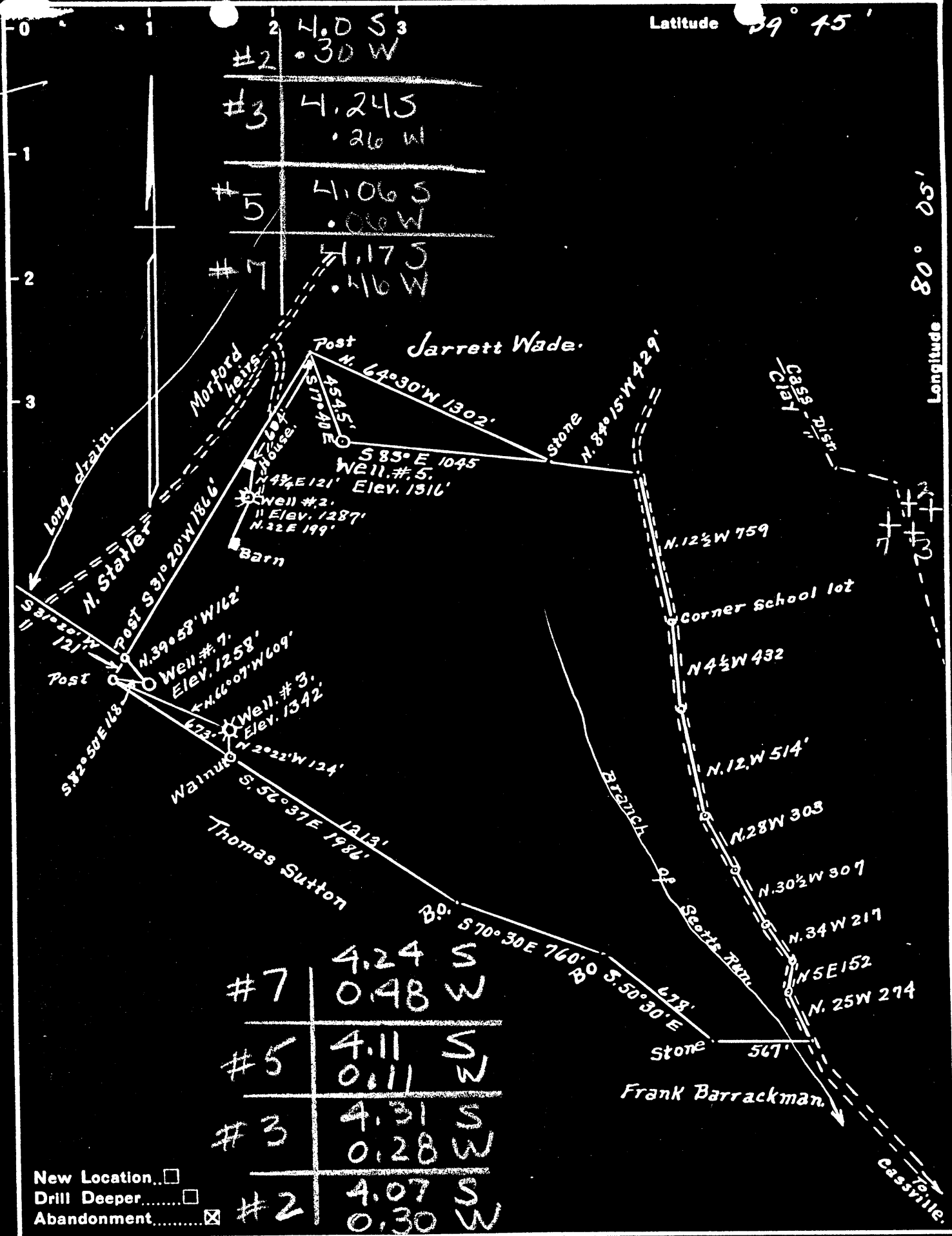


Latitude 39° 15'

Longitude 80° 05'



#7	4.24 S	0.48 W
#5	4.11 S	0.11 W
#3	4.31 S	0.28 W
#2	4.07 S	0.30 W

New Location...
 Drill Deeper.....
 Abandonment.....

Company Washington Oil Co
 Address Core, W. Va.
 Farm C.C. Core
 Tract ONE Acres 129+ Lease No. NC
 Well (Farm) No. 2-3-5&7 Serial No. #2=1287' #5=1316'
 Elevation (Spirit Level) #3=1342' #7=1258'
 Quadrangle Blacksville W Va.
 County Monongalia District Clay & Cass
 Engineer A.L. Headley
 Engineer's Registration No. _____
 File No. _____ Drawing No. _____
 Date 7-5-1948 Scale 1" = 600'

STATE OF WEST VIRGINIA
 DEPARTMENT OF MINES
 OIL AND GAS DIVISION
 CHARLESTON

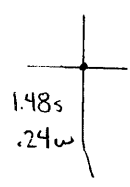
WELL LOCATION MAP

FILE NO. MON-417-A-#3

+ Denotes location of well on United States Topographic Maps, scale 1 to 62,500, latitude and longitude lines being represented by border lines as shown.

- Denotes one inch spaces on border line of original tracing.

Latitude



Longitude

oil well
 total depth 2300'
 completed 1896
 plugged 12-2-48

Topo Location

7.5' Loc. _____ 15' Loc. _____
 _____ (calc.) _____

Company Washington O Co
 Farm CC Core #3
 15' Quad _____
 (sec.) _____
 7.5' Quad Orange
 District Cass

WELL LOCATION PLAT

County 061 Permit 30417

C. C. CORE NO. 3 WELL.

Cass District, Monongalia County, W. Va.

By Washington Oil Co., Core, W. Va.

Abandoned under permit Mon-417-A1

On 167.24 acres, on Scott Run.

Elevation, 1342' L.

Surface owned by George Statler, Core, W. Va., and minerals by C. C. Core Heirs.

Drilling commenced Nov. 13, 1895; completed Feb. 1, 1896.

Shot April 1, 1905, with 60 lbs. nitroglycerine.

Salt water at 2270'.

10" casing, 880' (pulled); 8½", 907' (pulled); 6¾", 1901'; 5¼", 2180';
2" tubing, 2280'.

Coal was encountered at 770-785 and 860-868'.

Oil well. Abandonment reported to Dept. of Mines Aug. 30, 1948.

Record to RCT from Mrs. Griffith Jan. 5, 1949. Old File No. 445.

	Top.	Bottom.
Coal, black, soft	778	- 785
Coal, black, soft	860	- 868
Sand, gray, hard	1652	-
Sand, Big Injun, gray, hard (oil and salt water, 2270')	2160	- 2300
Total depth		2300

Clay District, Monongalia County, W. Va.

1.2 mi. N. E. of Core.

South Penn Oil Co.

Elevation, 1440' E. 1342' *from plat and previous well record*

10" casing, 880'; 8½", 907'; 6-5/8", 1901'; 5-3/16", 2180'.

Shot Feb. 11, 1897, with 3 qts.; Feb. 2, 1899, with 10 qts.;
Jan. 6, 1900, with 16 qts.; May 4, 1901, with 30 qts.;
Aug. 26, 1902, with 40 qts.; April 1, 1905, with 60 qts.

Initial production, 75 bbls. daily.

	Top.	Bottom.
Pittsburgh Coal		860
Big Injun Sand (break, 2255-70') (first pay, 2270') and unrecorded, to bottom		2160 - 2300



STATE OF WEST VIRGINIA
DEPARTMENT OF MINES
OIL AND GAS DIVISION

445

WELL RECORD

Permit No. Ab 417-A Oil or Gas Well Oil
(KIND)

Company Washington Oil Company
Address Core, W.Va.
Farm C.C. Core Acres 167.24
Location (waters) Scotts Run
Well No. 3 Elev. 1342'
District Cass County Monongalia
The surface of tract is owned in fee by George Stätler
Address Core, W.Va.
Mineral rights are owned by C.C. Core, Heirs
Address _____
Drilling commenced Nov. 13, 1895
Drilling completed Feb. 1, 1896
Date Shot 4/1/05 From _____ To _____
With 60 qts Nitro Glycerine
Open Flow _____ /10ths Water in _____ Inch
_____ /10ths Merc. in _____ Inch
Volume _____ Cu. Ft.
Rock Pressure _____ lbs. _____ hrs.
Oil _____ bbls., 1st 24 hrs.
Fresh water _____ feet _____ feet
Salt water 2270 feet _____ feet

Casing and Tubing	Used in Drilling	Left in Well	Packers
Size			Kind of Packer
16			
13			
10	880		Size of
8 1/4	907		
6 5/8	1901	1901	Depth set
5 3/16	2180	2180	
3			Perf. top
2		2280	Perf. bottom
Liners Used			Perf. top
			Perf. bottom

CASING CEMENTED _____ SIZE _____ No. Ft. _____ Date _____
COAL WAS ENCOUNTERED AT 778 FEET _____ INCHES
860 FEET _____ INCHES FEET _____ INCHES
_____ FEET _____ INCHES FEET _____ INCHES

Formation	Color	Hard or Soft	Top	Bottom	Oil, Gas or Water	Depth Found	Remarks
Coal	Black	Soft	778	785			
Coal	Black	Soft	860	868			
Sand	Gray	Hard	1652				
Sand <u>B9</u>	Gray	Hard	2160	2300	2270 Oil & Salt Water	2270	

