

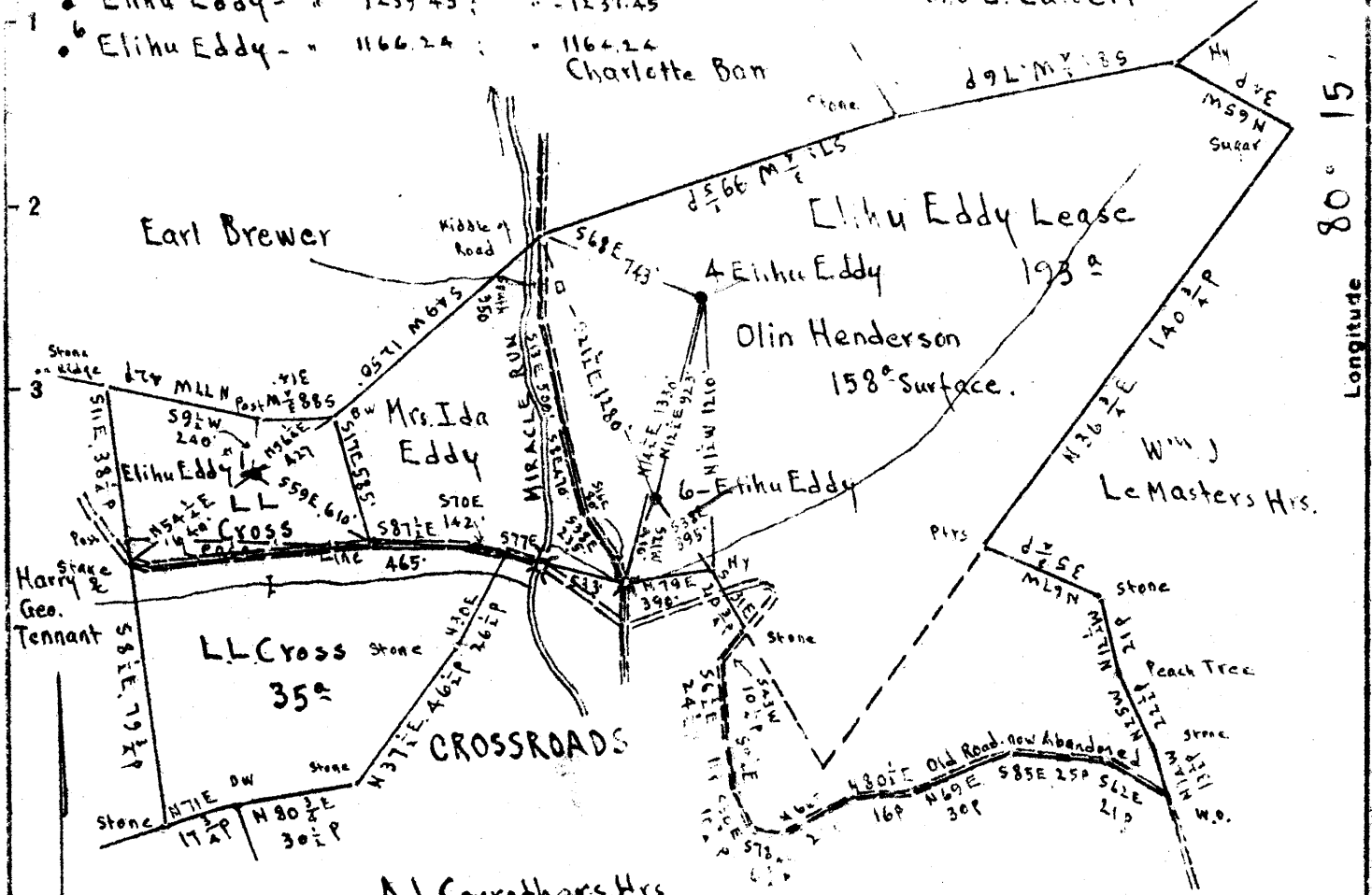
Latitude 39 40

Elevations:

- 1 Elishu Eddy - Floor - 1263.43; Ground - 1266.93
- 4 Elishu Eddy - " 1239.45; " - 1237.45
- 6 Elishu Eddy - " 1166.24; " - 1164.24

Ino L. Calvert

Charlotte Bar



Longitude 80 15

Scale 1" = 800 Feet

L.L. Cross
 Surface: • 1 Elishu Eddy; RFD #1, Wadestown, Monongalia Co., W.Va.
 Surface: • 4 & 6 Elishu Eddy; Olin Henderson; RFD #1, Wadestown, Monongalia Co., W.Va.

Pittsburgh Coal: Wheeling Dollar Savings & Trust Co., Wheeling, W.Va.
 223 1/2 a

0.425
 2.78W
 0.205
 2.72W
 0.405
 3.11W

New Location
 Drill Deeper
 Abandonment

On 400' Map #2359

N 14-15 E 18

Company Evaluation & Sales Service
 Address Mount Pleasant Michigan
 Farm Elishu Eddy
 Tract _____ Acres 193 Lease No. _____
 Well (Farm) No. 1 A 9/2 6 Serial No. _____
 Elevation (Spirit Level) See at top of sheet
 Quadrangle MANNINGTON
 County Monongalia District Battelle
 Engineer E. C. Tabler
 Engineer's Registration No. _____
 File No. _____ Drawing No. _____
 Date Feb 3^d 1948 Scale 1" = 800 Feet

STATE OF WEST VIRGINIA
 DEPARTMENT OF MINES
 OIL AND GAS DIVISION
 CHARLESTON

WELL LOCATION MAP
 MON-346-A-#6
 FILE NO. MON-347-A-#4
 MON-348-A-#1

+ Denotes location of well on United States Topographic Maps, scale 1 to 62,500, latitude and longitude lines being represented by border lines as shown.

- Denotes one inch spaces on border line of original tracing.



STATE OF WEST VIRGINIA
DEPARTMENT OF MINES
OIL AND GAS DIVISION

422

WELL RECORD

Permit No. 348 A

Oil or Gas Well Oil
(KIND)

Company South Penn Oil Company
Address Parkersburg, W. Va.
Farm Elihu Eddy Acres 193
Location (waters) _____
Well No. 1 Elev. 1260 1/3
District Nettelle County Monongalia
The surface of tract is owned in fee by Elihu Eddy and
Dick. Anderson Address RD-1 Wadestown W. Va.
Mineral rights are owned by _____
Address _____
Drilling commenced _____
Drilling completed Comp 1-2-1899 D.D. 5-10-1905
Date Shot 3-19-1920 From _____ To _____
With 20 qts.
Open Flow _____ /10ths Water in _____ Inch
_____ /10ths Merc. in _____ Inch
Volume _____ Cu. Ft.
Rock Pressure _____ lbs. _____ hrs.
Oil Made 4 to 5 bbls after D.D. bbls., 1st 24 hrs.
Fresh water _____ feet _____ feet
Salt water _____ feet _____ feet

| Casing and Tubing | Used in Drilling | Left in Well | Packers |
|-------------------|------------------|---------------|----------------------|
| Size | | | <u>No Record</u> |
| 16 | | | Kind of Packer _____ |
| 13 | | | |
| 10 | <u>225</u> | <u>17 1/2</u> | Size of _____ |
| 8 1/4 | <u>1315</u> | " | |
| 6 1/2 | <u>2250</u> | " | Depth set _____ |
| 5 3/16 | <u>2491</u> | " | |
| 3 | | | Perf. top _____ |
| 2 | | | Perf. bottom _____ |
| Liners Used | | | Perf. top _____ |
| <u>4 X 4 1/2</u> | <u>312</u> | | Perf. bottom _____ |

CASING CEMENTED _____ SIZE _____ No. Ft. _____ Date _____
COAL WAS ENCOUNTERED AT _____ FEET _____ INCHES
_____ FEET _____ INCHES FEET _____ INCHES
_____ FEET _____ INCHES FEET _____ INCHES

| Formation | Color | Hard or Soft | Top | Bottom | Oil, Gas or Water | Depth Found | Remarks |
|---------------|-------|--------------|------|--------|-------------------|-------------|-----------------------------|
| Pgh. Coal | | | 1015 | 1022 | | | |
| Big Injun | | | 2283 | 2470 | | | |
| Fifty Feet | | | 2915 | 3010 | | | |
| Gas | | | 2915 | | | | |
| Campbell R.S. | | | 3154 | 3184 | | | |
| Stray Sand | | | 3200 | 3220 | | | |
| Gorden | | | 3235 | | | | |
| 1st Pay | | | 3245 | | | | |
| 2nd Pay | | | 3250 | | | | |
| Total depth | | | 3255 | | | | |
| Fourth Sand | | | 3255 | 3290 | | | |
| Oil | | | 3255 | | | | |
| Slate | | | 3290 | 3293 | | | |
| Shells | | | 3293 | 3300 | | | |
| | | | | | | | Total Depth now 3302 |

